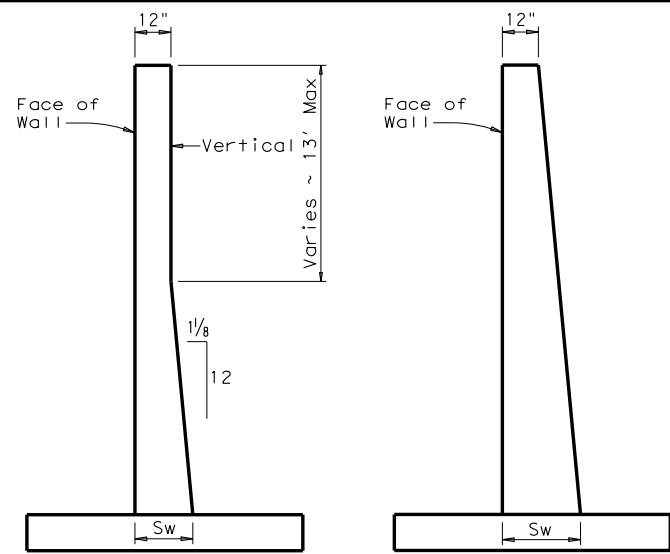


DISCLAIMER: The use of this standard is governed by the "Texas Engineering Practice Act". No warranty of any kind is made by TxDOT for any purpose whatsoever. TxDOT assumes no responsibility for the conversion of this standard to other formats or for incorrect results or damages resulting from its use.

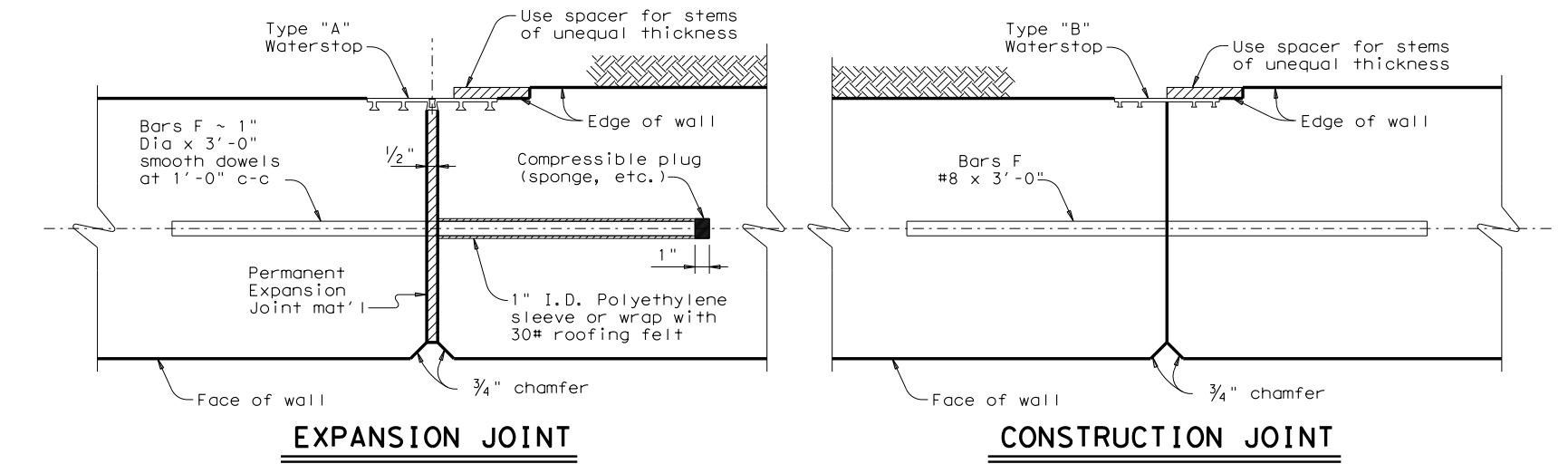


AS DETAILED ALL HEIGHTS
(Basis for payment)

FRONT FACE VERTICAL
BACK FACE SLOPED

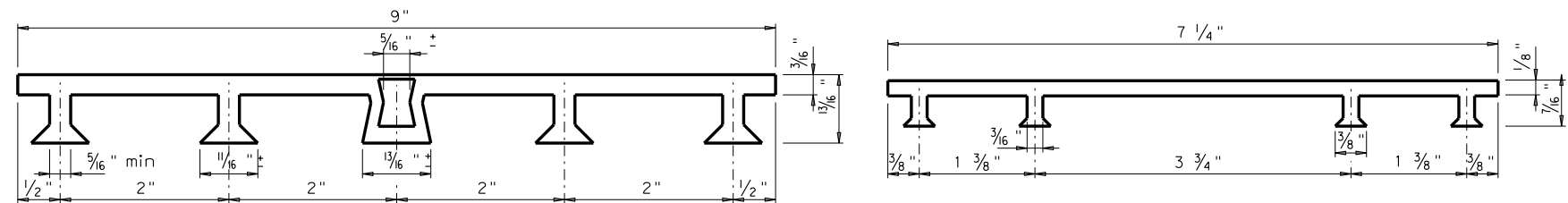
ALTERNATE STEM SLOPE DETAILS

Walls with slopes other than those shown may be used after approval by the Engineer. Sw shall not be less than shown in Table on Sheet 1. No payment will be made for excess concrete due to changing of slope of wall stem.



EXPANSION JOINT

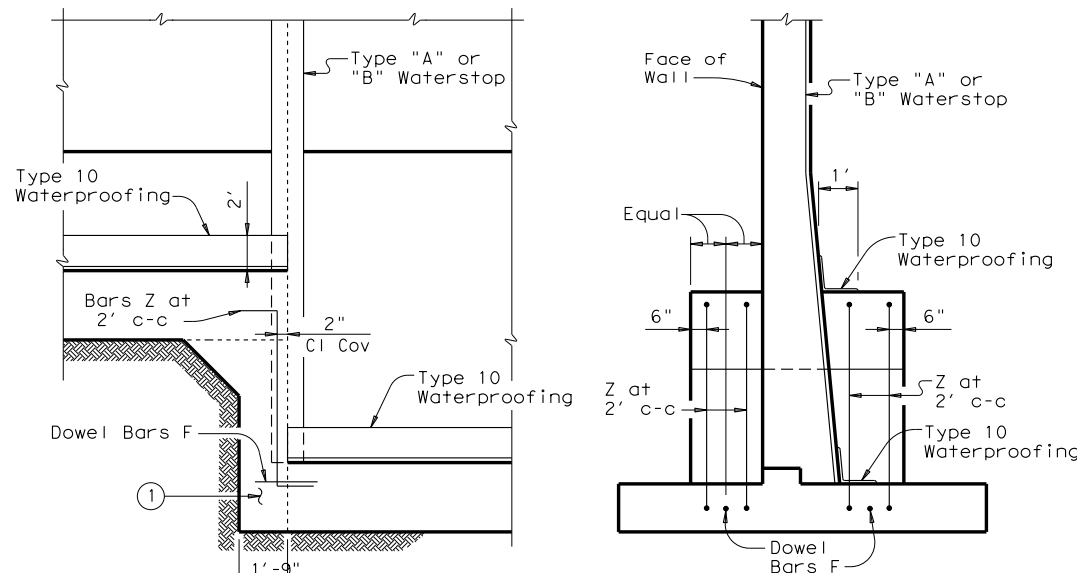
CONSTRUCTION JOINT



PVC WATERSTOP TYPE "A"

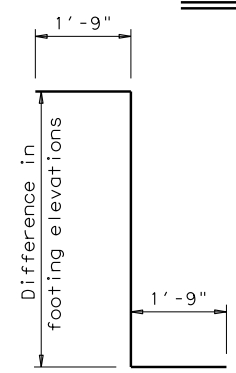
PVC WATERSTOP TYPE "B"

Note: Dimensions and shapes may vary slightly depending on manufacturer.

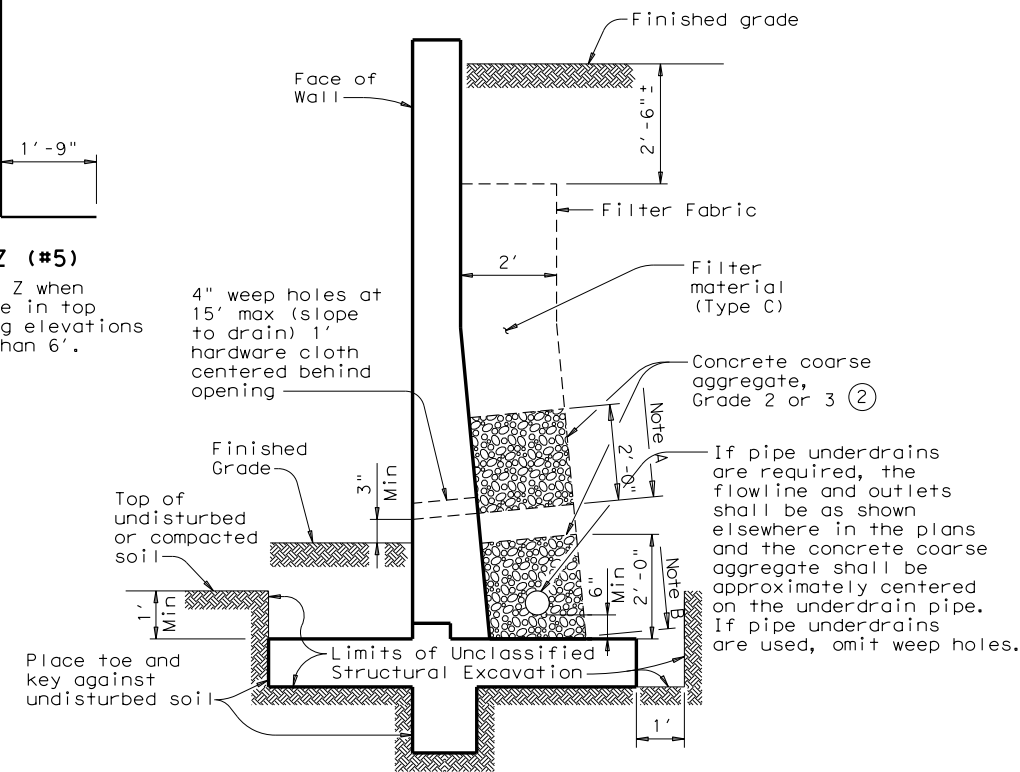


**PARTIAL ELEVATION
SHOWING WATERSTOP AT FOOTING JOINT**

① Unreinforced Class "C" Concrete when difference in top of footing elevations is less than 6'. Omit when Dowel Bars F can be placed between adjacent footings with 4" cover top and bottom.



BARS Z (#5)
Omit Bars Z when difference in top of footing elevations is less than 6'.

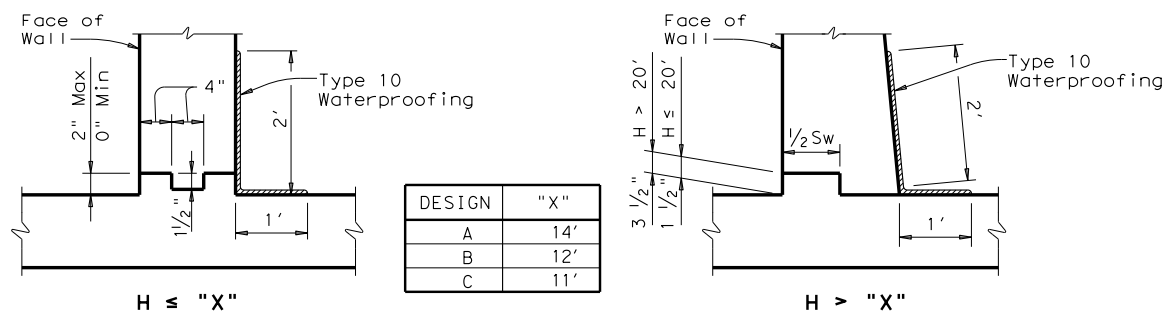


DRAINAGE DETAILS AND EXCAVATION DIAGRAM

Note A: Stop coarse aggregate at this level when weep holes are used.
Note B: Use coarse aggregate to here with filter material above when underdrains are used.

GENERAL NOTES:

Walls are designed assuming unit weight of soil = 120 pcf, and coefficient of horizontal earth pressure = 0.33.
Walls are designed to provide a minimum factor of safety against sliding of 1.5. The undisturbed or compacted soil depth in front of walls, from bottom of Key up, shall not be less than $K_w + Ft + 1'$.
Retaining walls are detailed to be placed on grades up thru 10% with footing level, with no changes in reinforcing steel. Steeper grades can be accommodated by shortening Bars A1 and B and increasing length of legs of Bars U by the same amount. No change in Quantities will be involved.
Retaining walls may be placed on Horizontal Curves by adjusting lengths of footing Bars T and H. Minor revisions of Concrete Quantities may be required.
Designed in accordance with current AASHTO Standard and Interim Specifications.
All concrete to be Class "C".
All reinforcing steel to be Grade 60.



JOINT AND WATERSTOP DETAILS

DESIGN	"X"
A	14'
B	12'
C	11'

		Bridge Division Standard	
RETAINING WALL MISCELLANEOUS DETAILS			
RW 2			
FILE: rwstde11.dgn	DN: TxDOT	CK: TxDOT	DW: JGD
©TxDOT March 2010	CON: TxDOT	SECT: HIGHWAY	JOB: HIGHWAY
REVISIONS		DIST: COUNTY	
04-11: Added Note 2.		SHEET NO.	

DATE: FILE: