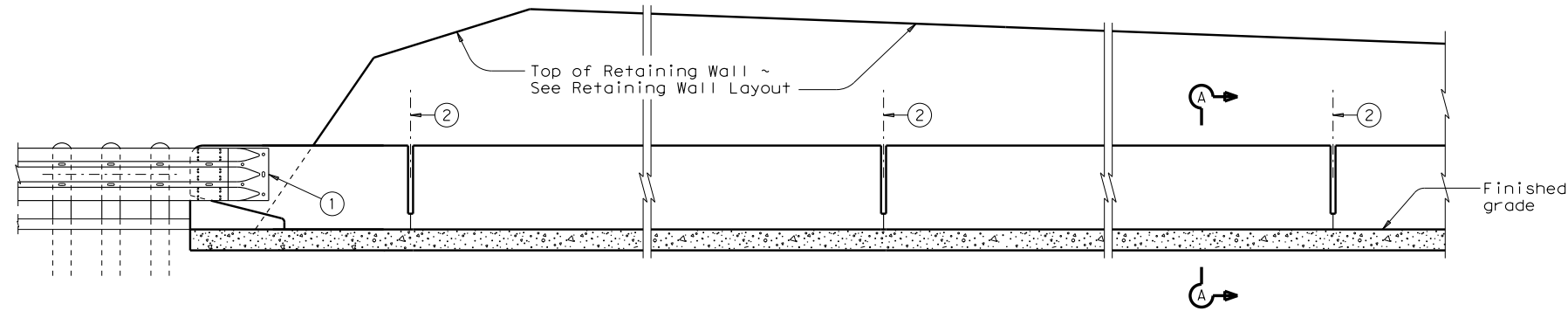
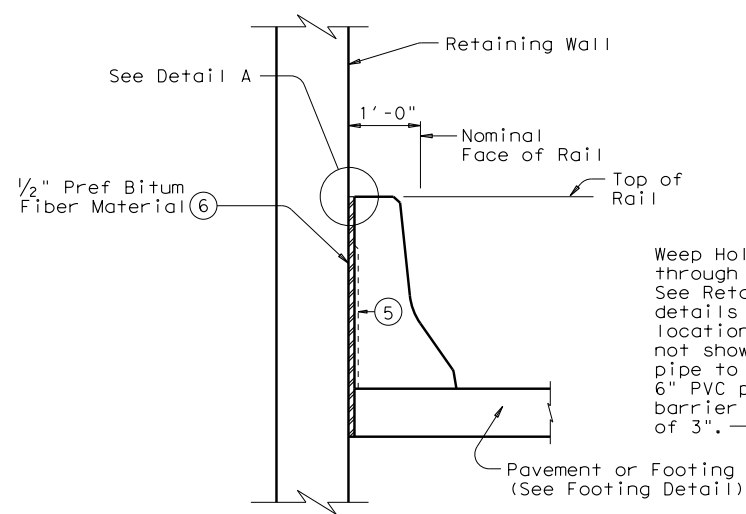


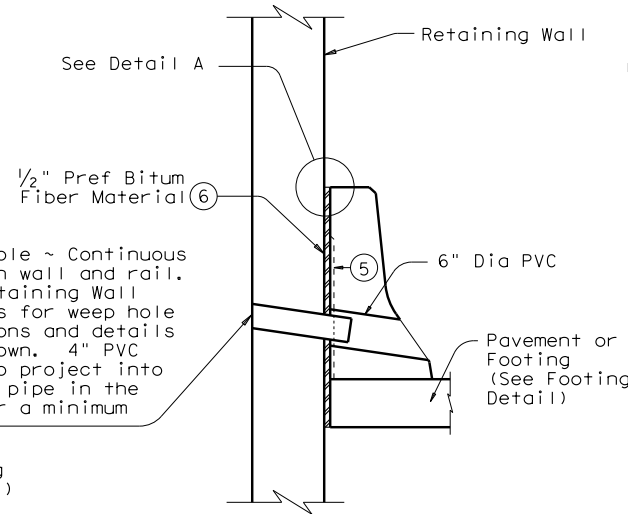
DISCLAIMER: The use of this standard is governed by the "Texas Engineering Practice Act". No warranty of any kind is made by TxDOT for any purpose whatsoever. TxDOT assumes no responsibility for the conversion of this standard to other formats or for incorrect results or damages resulting from its use.



ELEVATION

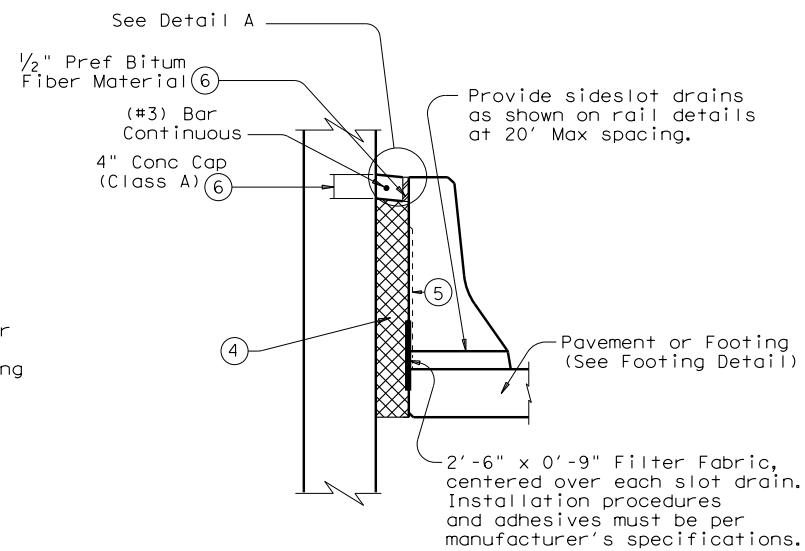


TYPICAL SECTION

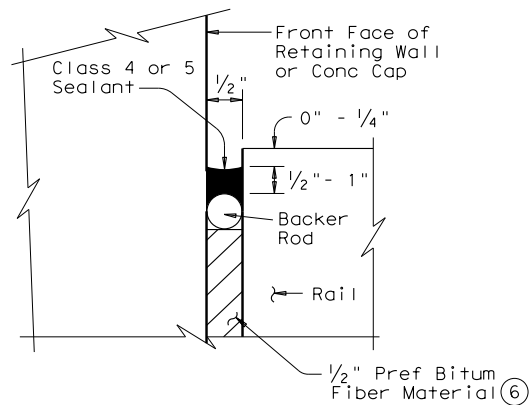


SECTION AT WEEP HOLES

Note: Weep holes must not be placed within 1'-4" of Intermediate Rail Joints. Adjust bar spacing or field bend bars in rail as required to clear weep holes by 1" Min.

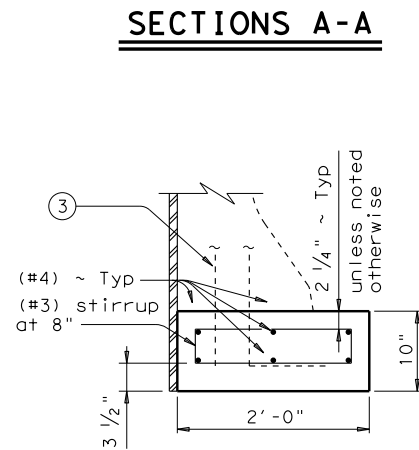


SECTION AT MSE WALLS WITHOUT DRAINAGE SYSTEM



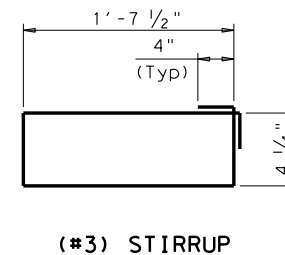
DETAIL A

Place in accordance with Item 438 "Cleaning and Sealing Joints".



FOOTING DETAIL

Footing for traffic rail required when concrete pavement is not present. This footing is adequate only when back of rail is fully supported by the retaining wall. Use Traffic Rail Foundation standard TRF for other cases.



(#3) STIRRUP

- ① See details elsewhere in plans for rail end treatment.
- ② Provide intermediate rail wall joints at intervals not exceeding the requirements shown on the rail details.
- ③ See rail details for anchorage reinforcement. Use anchorage reinforcement required for bridge decks unless noted otherwise.
- ④ Clean gravel (1/4" - 1/2"). Example: Concrete Course Aggregate Grades 6,7,8. The width of the backfill will be dependent upon the width of the coping leg (3 1/2" Min). Minimum backfill width = Width of front leg of MSE wall coping.
- ⑤ Do not recess back of rail as shown on rail details.
- ⑥ Place 1/2" Bituminous Fiber Material and concrete cap continuously behind rail expansion joints and rail intermediate wall joints.

GENERAL NOTES:

These details are for constructing a concrete barrier-type rail against a retaining wall. All reinforcing steel, concrete, expansion joint material, etc. shown is to be included in unit price of the rail type used. All concrete for rail footing shall be Class "C". All reinforcing steel shall be Grade 60.

		Bridge Division Standard	
RETAINING WALL TRAFFIC RAIL AT BASE			
RW(BTR)			
FILE: rwstds13.dgn	DN: TxDOT	CK: TxDOT	DW: TxDOT
©TxDOT March 2010	CONT	SECT	JOB
REVISIONS			
	DIST	COUNTY	SHEET NO.

DATE:
FILE: