

DISCLAIMER: The use of this standard is governed by the "Texas Engineering Practice Act". No warranty of any kind is made by TxDOT for any purpose whatsoever. TxDOT assumes no responsibility for the conversion of this standard to other formats or for incorrect results or damages resulting from its use.

DATE: FILE:

**BAR TABLE**

BAR	SIZE
A	#5
B	#5
D	#5
E	#5
T	#4

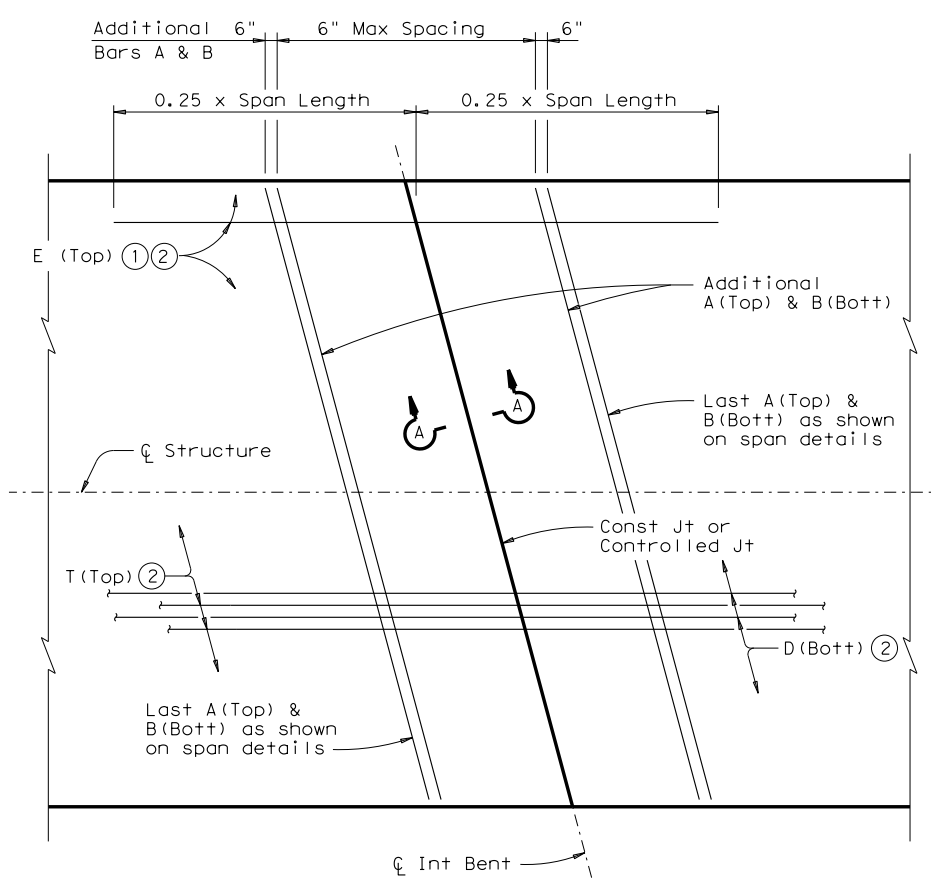
- ① Place Bars E between Bars T in the top mat of reinforcement over Interior Bents.
- ② Top and bottom mats of reinforcement are to be continuous through joint over Interior Bents.
- ③ Maintain a constant 8" thick slab over the bent.

The details shown on this sheet are applicable for two and three span units only. Units may be comprised of different span lengths. However, the maximum allowable overall unit length shall not exceed three times the length of the shortest end span for that unit. This limitation is based on the slip resistance of the elastomeric bearings shown on the standard sheet SBEB.

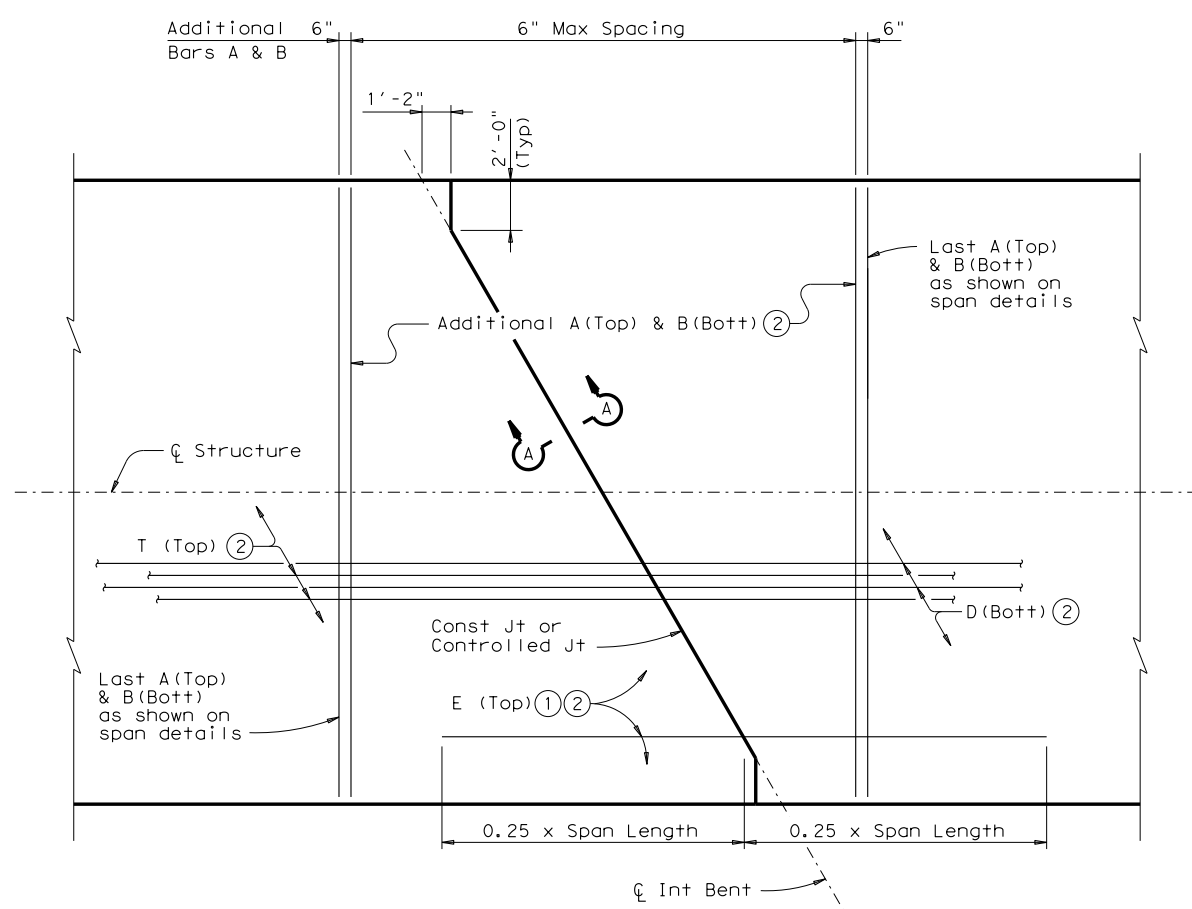
**GENERAL NOTES:**

Designed according to AASHTO LRFD Specifications. This standard is drawn showing right forward skew. See Bridge Layout for actual skew direction. Where multi-span units are indicated on the Bridge Layout, the Thickened Slab End details and reinforcement shown on Standard SBTS (Bars AA, G, H, J, K, and M) and on the Span Details shall be omitted where slabs are continuous over interior bents. At these locations, the slab details and reinforcement shall be as shown on this sheet or on Standard PCP (if using this option). Thickened Slab End reinforcement and details still apply at expansion joint locations (end of units). See Span Details for remainder of slab reinforcement and details. All reinforcing shall be Grade 60. Concrete compressive strength  $f'c = 4,000$  psi. Bar laps, where required, shall be as follows:  
 Uncoated ~ #4 = 1'-5"  
           ~ #5 = 1'-9"  
 Epoxy Coated ~ #4 = 2'-1"  
                ~ #5 = 2'-7"

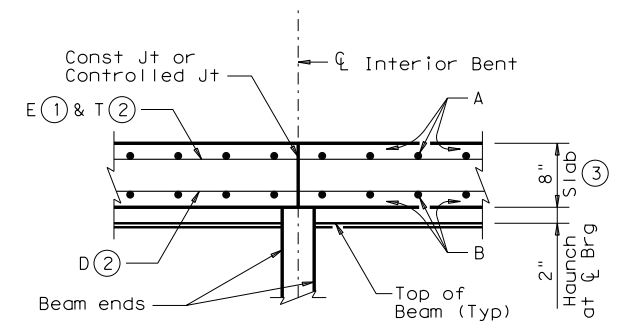
The details shown on this sheet are applicable for use only with the Steel Beam Standard Designs shown on standards SBSD-24, SBSD-28 and SBSD-30.



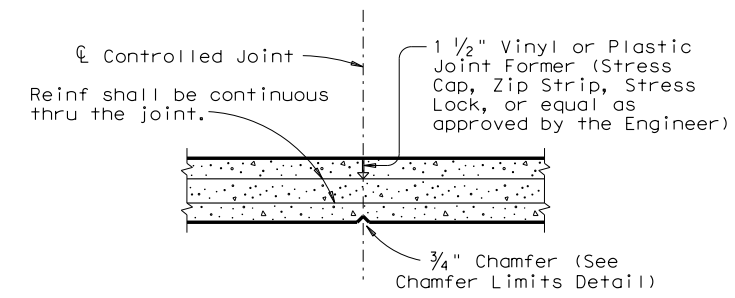
**PLAN FOR 15° SKEW (0° SIMILAR)**



**PLAN FOR 30° SKEW**



**SECTION A-A**



**CONTROLLED JOINT DETAIL**

**HL93 LOADING**

Texas Department of Transportation **Bridge Division Standard**

**CONTINUOUS SLAB DETAILS STEEL BEAM SPANS**

**SBCS**

FILE: sbstae02.dgn	DN: TxDOT	CK: TxDOT	DN: TxDOT	CK: TxDOT
©TxDOT August 2004	CONT	SECT	JOB	HIGHWAY
REVISIONS				
	DIST	COUNTY	SHEET NO.	