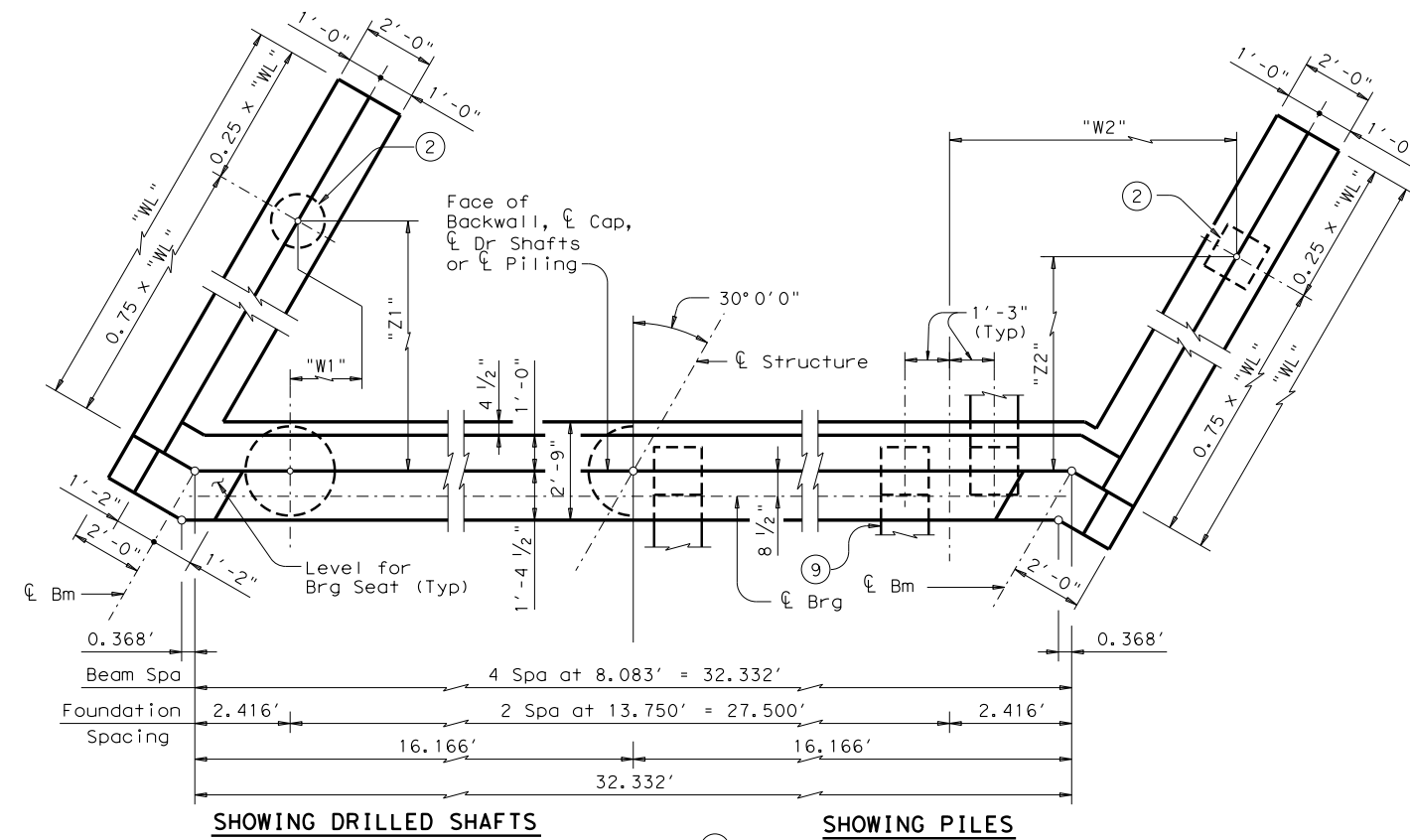
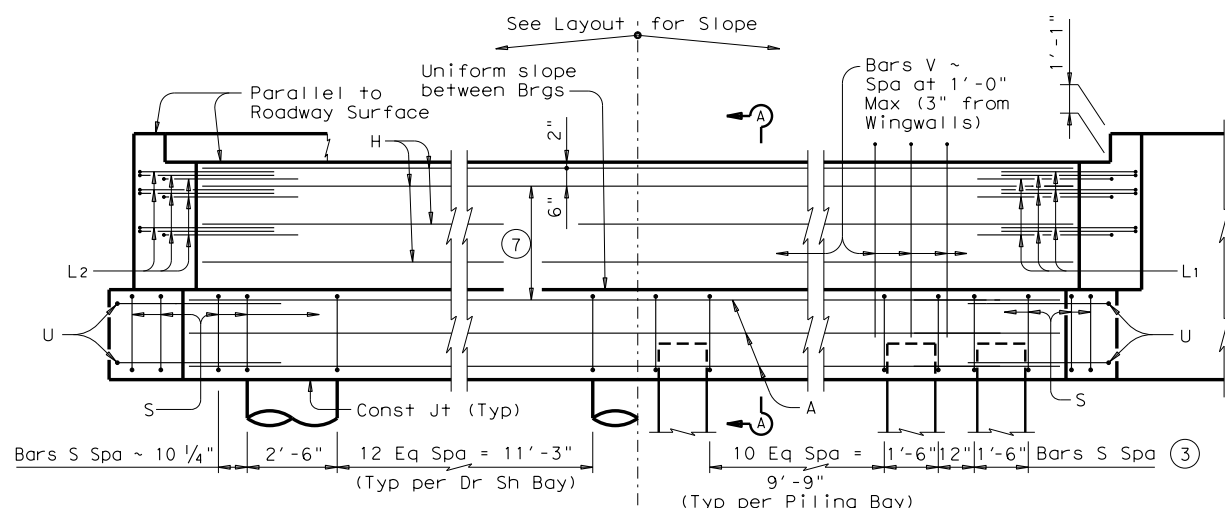


DISCLAIMER: The use of this standard is governed by the "Texas Engineering Practice Act". No warranty of any kind is made by TxDOT for any purpose whatsoever. TxDOT assumes no responsibility for the conversion of this standard to other formats or for incorrect results or damages resulting from its use.

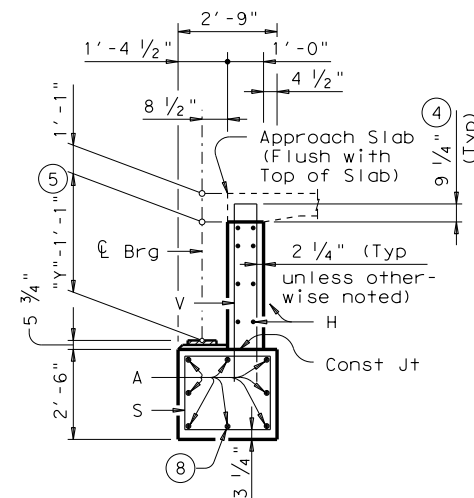
DATE: FILE:



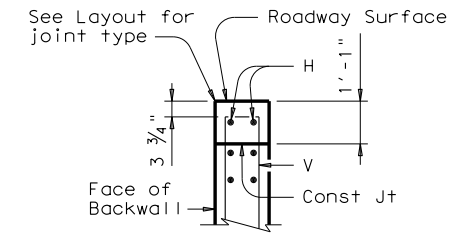
PLAN 1



ELEVATION



SECTION A-A (With Approach Slab) 6



BACKWALL DETAIL (Without Approach Slab) 6

Header Slope	Beam Type	Wingwall Type	Wingwall Lgth "WL"	"W1"	"Z1"	"W2"	"Z2"				
2:1	W18	Cantilevered	8.000'	Not Applicable							
	W21	Cantilevered	9.000'								
	W24	Cantilevered	10.000'								
	W27	Cantilevered	10.000'								
	W30	Cantilevered	11.000'								
	W33	Cantilevered	11.000'								
3:1	W36	Cantilevered	12.000'	Not Applicable							
	W40	Cantilevered	12.000'								
	W18	Cantilevered	12.000'					1.593'	8.944'	8.157'	7.944'
	W21	Founded	13.000'					1.968'	9.593'	8.532'	8.593'
	W24	Founded	14.000'					2.343'	10.243'	8.907'	9.243'
	W27	Founded	15.000'					2.343'	10.243'	8.907'	9.243'
	W30	Founded	16.000'					2.718'	10.892'	9.282'	9.892'
W33	Founded	17.000'	3.093'	11.542'	9.657'	10.542'					
W36	Founded	18.000'	3.468'	12.191'	10.032'	11.191'					

GENERAL NOTES:
 Designed according to AASHTO LRFD Specifications.
 Concrete compressive strength $f'_c = 3,600$ psi.
 All cap and wall reinforcing shall be Grade 60.
 See Bridge Layout for beam type, header slope, and foundation type, size and length.
 See standard FD for foundation details and notes.
 See standard CRR for riprap attachment details, if applicable.
 See standard SBRR for location and size of anchor bolt required for erection bracing.
 See applicable rail details for rail anchorage in wingwalls.
 Details are drawn showing Right Forward skew. See Bridge Layout for actual skew direction.
 These abutment details may be used with standard SSB-30-30 only.

- 1 See Table A for variable dimensions based on header slope and beam type.
- 2 See Table A to determine if wingwall foundations are required.
- 3 For Piling larger than 16", adjust Bars S spacing as required to avoid Piling.
- 4 Increase as required to maintain 3 3/4" from Finished Grade.
- 5 See SBSD-30 standard for "Y" value.
- 6 See Layout to determine if Approach Slab is present.
- 7 Use 2 Eq Spa for W18 thru W27 beams and 3 Eq Spa for W30 beams and larger.
- 8 With pile foundations, replace Bar A located at bottom centerline of cap with 2 ~ #11 x 9'-9" placed between piling groups. Deduct 68 Lbs from reinforcing steel total.
- 9 See Detail "A" on FD standard.

HL93 LOADING SHEET 1 OF 3

**ABUTMENTS
STEEL BEAM SPANS
30' ROADWAY 30° SKEW**

ASB-30-30

FILE: sbstd28.dgn	DN: TxDOT	CK: TxDOT	DW: TxDOT	CK: TxDOT
©TxDOT August 2004	CONT	SECT	JOB	HIGHWAY
REVISIONS				
DIST		COUNTY		SHEET NO.

DISCLAIMER: The use of this standard is governed by the "Texas Engineering Practice Act". No warranty of any kind is made by TxDOT for any purpose whatsoever. TxDOT assumes no responsibility for the conversion of this standard to other formats or for incorrect results or damages resulting from its use.

DATE: FILE:

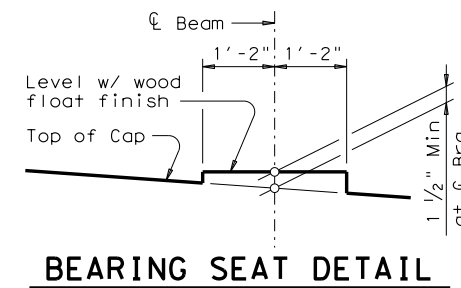
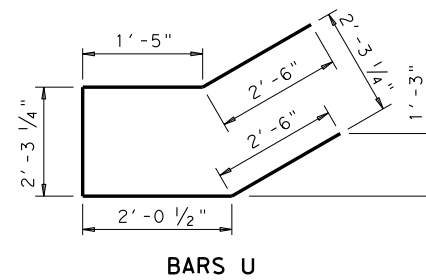
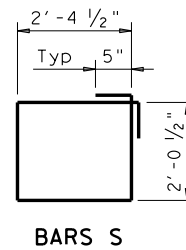
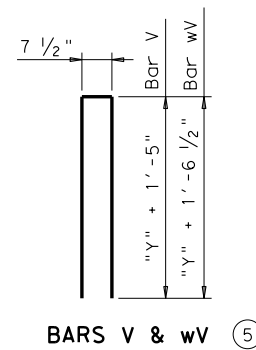
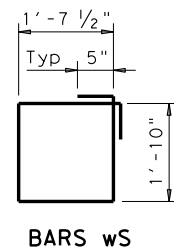
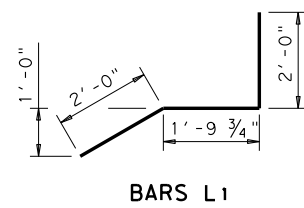
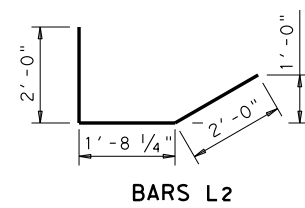
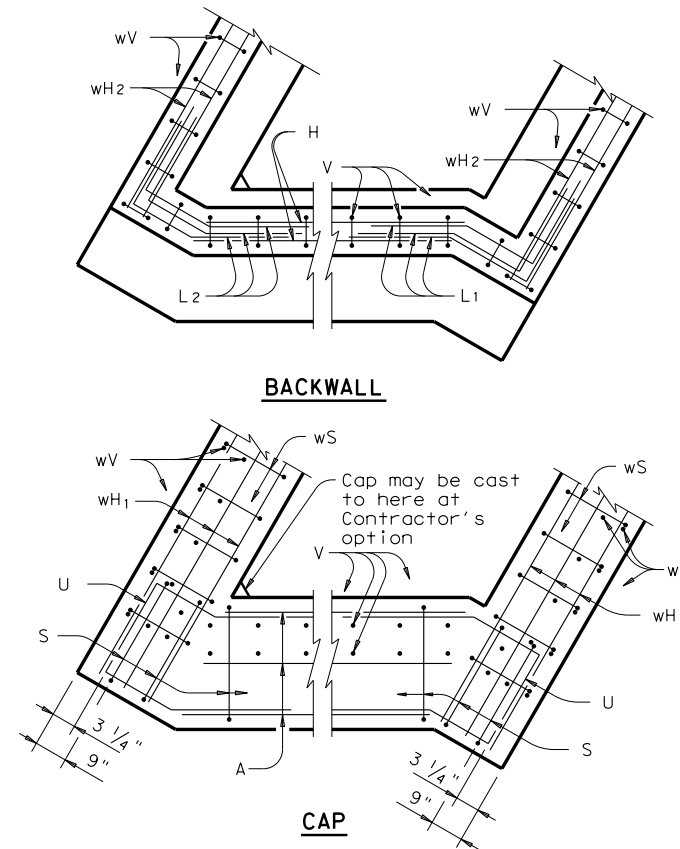
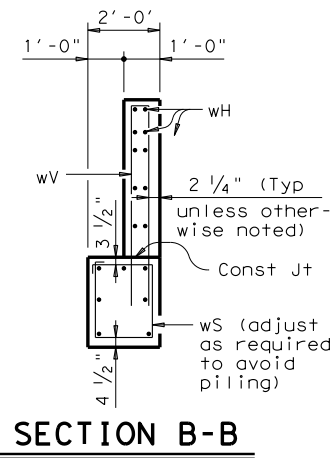
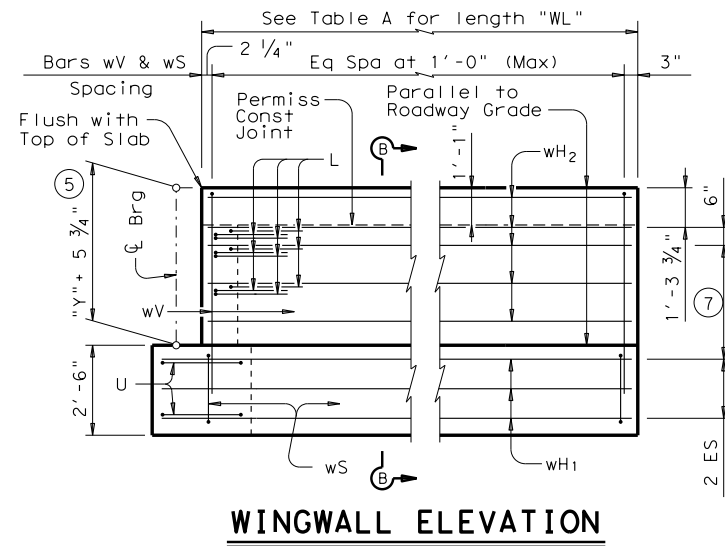


TABLE OF FOUNDATION LOADS

Span Length	Shaft Load	Pile Load
	Tons/Shaft	Tons/Pile
30	51	46
35	55	48
40	59	50
45	62	51
50	66	54
55	69	55
60	72	57
65	75	58
70	78	60
75	81	61
80	85	63
85	88	65
90	92	67
95	95	68
100	98	70
105	102	72
110	106	74
115	109	76
120	112	77

- ⑤ See SBS-30 standard for "y" value.
- ⑦ Use 2 Eq Spa for W18 thru W27 beams and 3 Eq Spa for W30 beams and larger.



**ABUTMENTS
STEEL BEAM SPANS
30' ROADWAY 30° SKEW**

ASB-30-30

FILE: sbstde28.dgn	DN: TxDOT	CK: TxDOT	DW: TxDOT	CK: TxDOT
©TxDOT August 2004	CONT	SECT	JOB	HIGHWAY
REVISIONS				
	DIST	COUNTY	SHEET NO.	

