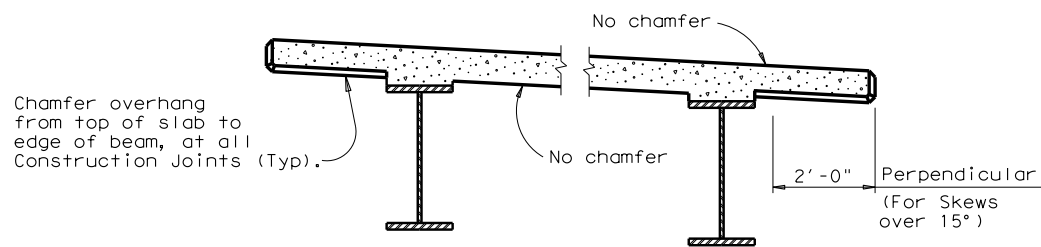


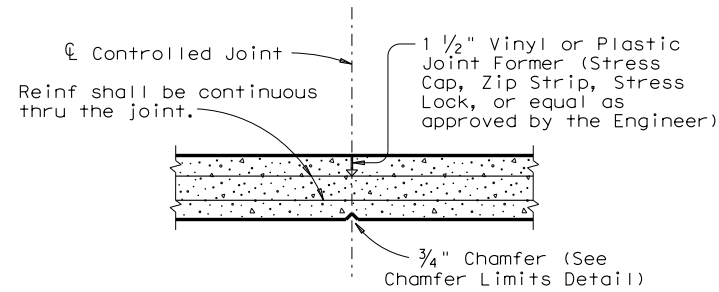
DISCLAIMER: The use of this standard is governed by the "Texas Engineering Practice Act". No warranty of any kind is made by TxDOT for any purpose whatsoever. TxDOT assumes no responsibility for the conversion of this standard to other formats or for incorrect results or damages resulting from its use.

LEVELS DISPLAYED
 PATH:



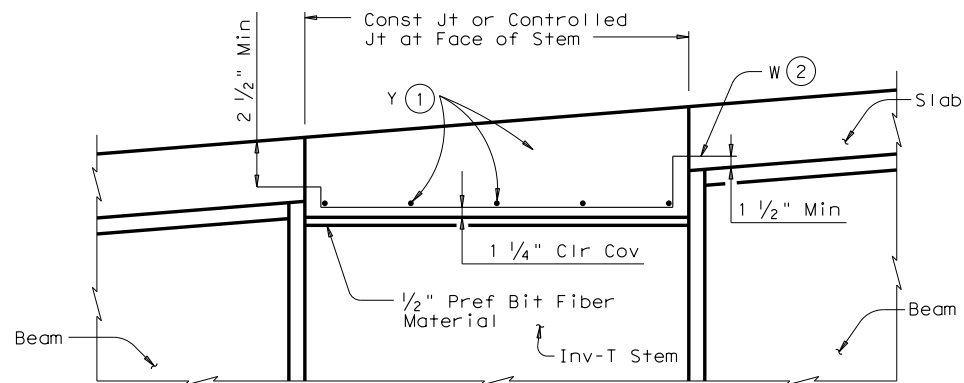
CHAMFER LIMITS DETAILS

Note: See Span Details for Const Jt locations.



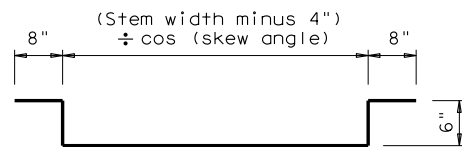
CONTROLLED JOINT DETAIL

(Saw-cutting will not be allowed)

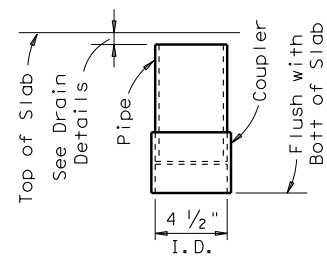


REINFORCEMENT OVER INV-T BENTS

Slab reinforcement not shown for clarity.

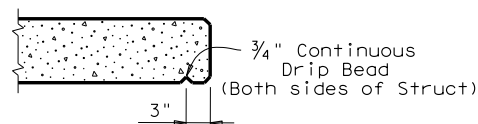


BARS W (#4)

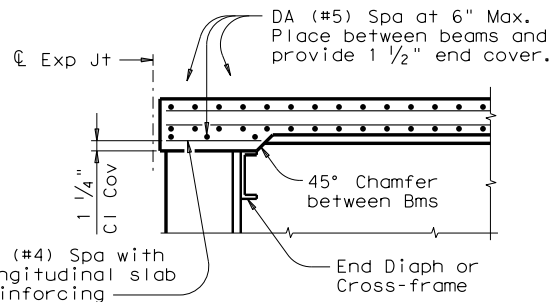


C-I-P DRAIN DETAIL

Note: Roughen outside of PVC with coarse rasp or equal to ensure bond with cast-in-place concrete.



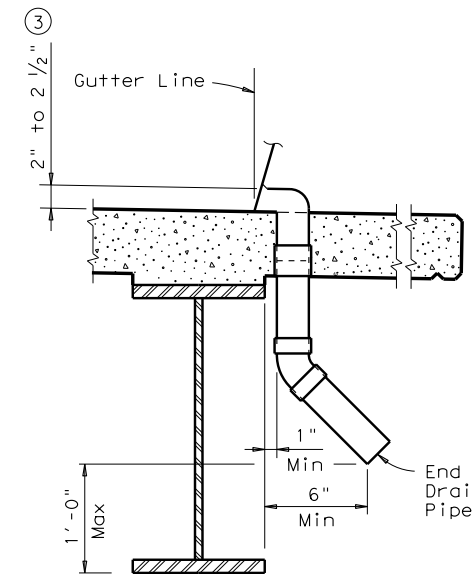
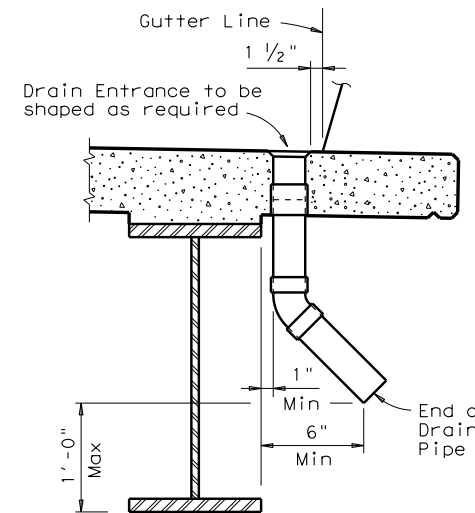
DRIP BEAD DETAIL



SECTION AT SLAB ENDS

Showing additional required slab reinforcement when Thickened Slab Ends, shown on standard SBTS, are not indicated on the span details.

- ① Space Bars Y (#4) at 12" Max. Use 2" end cover. Number of Bars Y must satisfy spacing limit. Place parallel to bent.
- ② Space Bars W at 12" Max (3" from end of cap). Tilt if necessary to maintain cover requirements. Place parallel to longitudinal slab reinforcement.
- ③ Drain Entrance formed in Rail or Sidewalk.



DRAIN DETAILS

Note: All drain pipe and fittings to be 4" diameter (Sch 40) PVC. See Item 481 "Pipe for Drains" for pipe, connections and solvent welding. Bend reinforcing steel to clear PVC 1". Drain length and location shall be as directed by the Engineer. No drains shall be permitted over roadways or railways, or within 10'-0" of Bent Caps. Degrease outside of exposed PVC, apply acrylic water base primer, then coat with same surface finishing material as used for outside girder face. Variations of the above designs, as required for the type of rail used and its location on the structure, shall be installed with the approval and direction of the Engineer. No water shall be discharged onto girders.

GENERAL NOTES:

Designed in accordance with AASHTO LRFD Specifications.

All items (reinforcing steel, drains, joint formers, etc.) shown on this sheet are to be considered subsidiary to other bid items.

Texas Department of Transportation
 Bridge Division

**MISCELLANEOUS
 SLAB DETAILS
 STEEL BEAMS**

SBMS

FILE: sbs+de35.dgn	DN: TxDOT	CK: TxDOT	DW: TxDOT	CK: TxDOT
© TxDOT April 2006	DISTRICT	FEDERAL AID PROJECT		SHEET
REVISIONS				
	COUNTY	CONTROL	SECT	JOB HIGHWAY