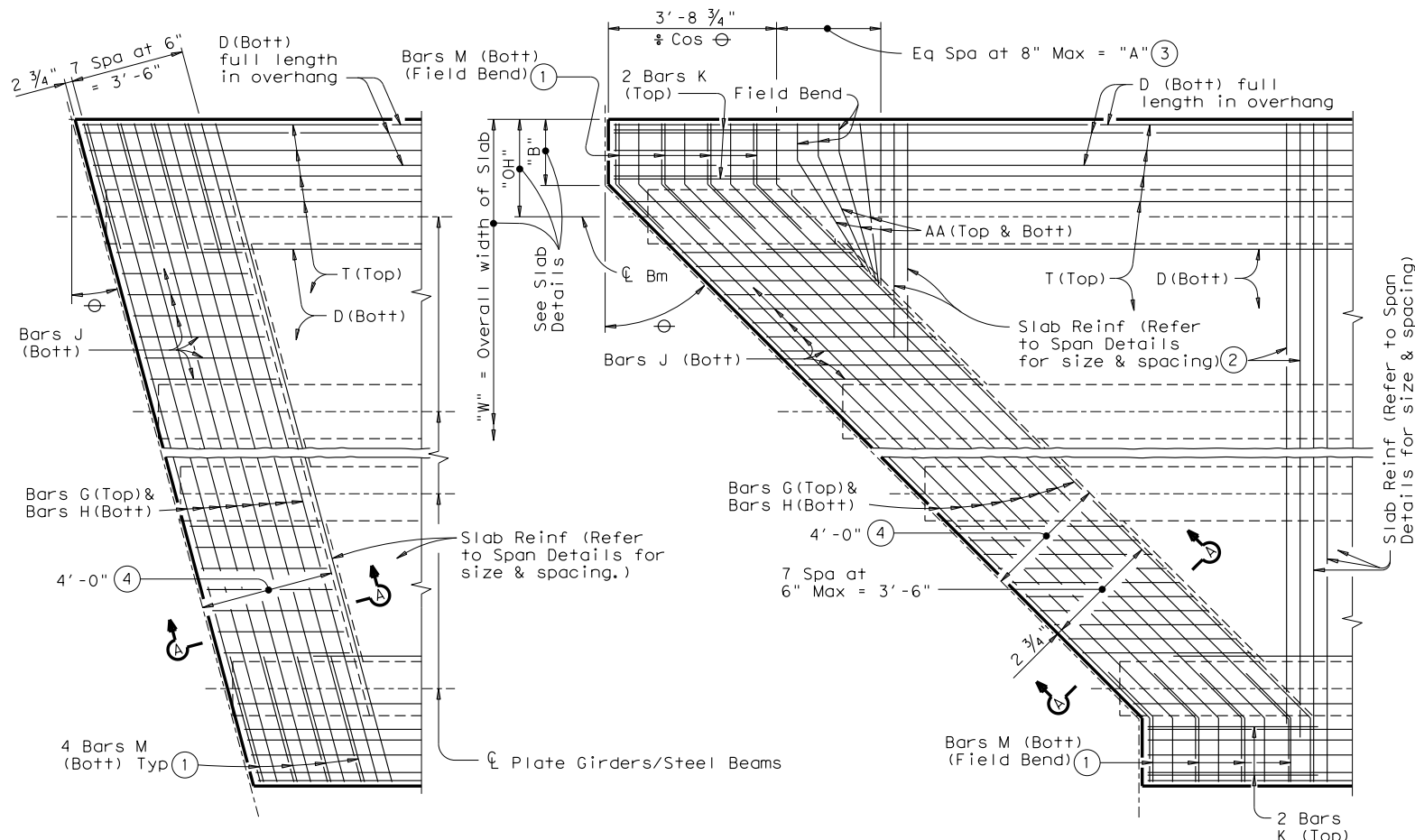


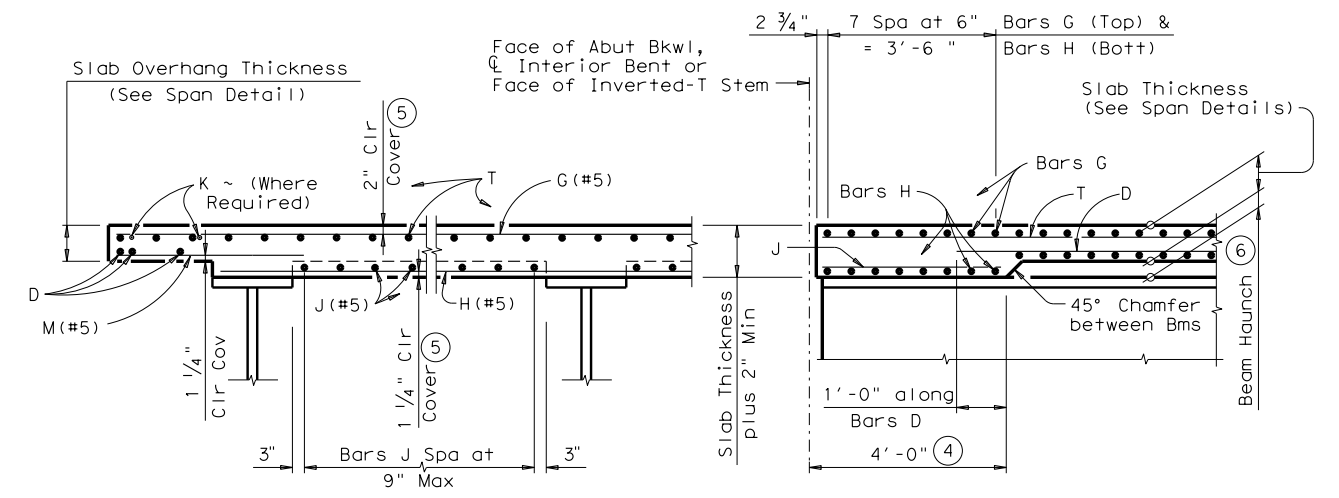
DISCLAIMER: The use of this standard is governed by the "Texas Engineering Practice Act". No warranty of any kind is made by TxDOT for any purpose whatsoever. TxDOT assumes no responsibility for the conversion of this standard to other formats or for incorrect results or damages resulting from its use.

LEVELS DISPLAYED	ACC:
1	



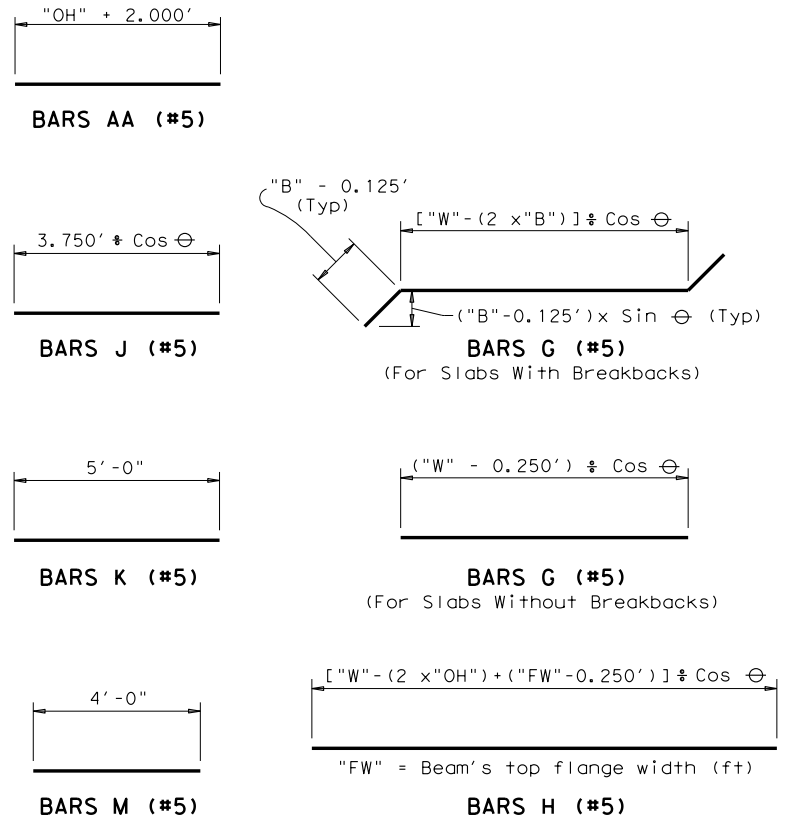
PARTIAL PLAN FOR SLABS WITHOUT BREAKBACK

PARTIAL PLAN FOR SLABS WITH BREAKBACK



TYPICAL TRANSVERSE SECTION

SECTION A-A



- ① 1' Max Spacing measured along slab edge.
- ② End the top transverse reinforcement steel at inside Bar G. End the bottom transverse reinforcement steel 1'-0" beyond inside Bar G.
- ③ $\text{"A"} = (\text{"OH"} + 2.125' + \frac{0.052'}{\sin \theta} - \text{"B"}) \times \tan \theta$
- ④ Thickened Slab End dimensioned perpendicular to Face of Bkwl, Centerline Interior Bent or Face of Inverted-T Stem.
- ⑤ Clear Cover shall be as indicated unless otherwise shown on Span Details.
- ⑥ Slab haunch must be 2" or greater at Plate Girder/Steel Beam ends to use these details.

GENERAL NOTES:
 Designed according to AASHTO LRFD Specifications. These details are to be used in conjunction with the Span Details and Standard PCP (if prestressed concrete panels are used).
 All reinforcing bars shall be Grade 60 steel. Unless otherwise shown or noted hereon, all Span Details remain unchanged.
 If slab reinforcing steel is shown on the Slab Details to be epoxy coated, then Bars AA, G, K, H, J and M shall be epoxy coated.
 Bar laps, where required, shall be as follows:
 Uncoated ~ #4 = 1'-5"
 ~ #5 = 1'-9"
 Epoxy Coated ~ #4 = 2'-1"
 ~ #5 = 2'-7"

HL93 LOADING

Texas Department of Transportation
 Bridge Division
THICKENED SLAB END DETAILS
STEEL BEAM SPANS

SBTS

FILE: sbs+de36.dgn	DN: TxDOT	CK: TxDOT	OW: TxDOT	CK: TxDOT
© TxDOT April 2006	DISTRICT	FEDERAL AID PROJECT		SHEET
REVISIONS				
	COUNTY	CONTROL	SECT	JOB
				HIGHWAY