

DISCLAIMER: The use of this standard is governed by the "Texas Engineering Practice Act". No warranty of any kind is made by TxDOT for any purpose whatsoever. TxDOT assumes no responsibility for the conversion of this standard to other formats or for incorrect results or damages resulting from its use.

DATE: FILE:

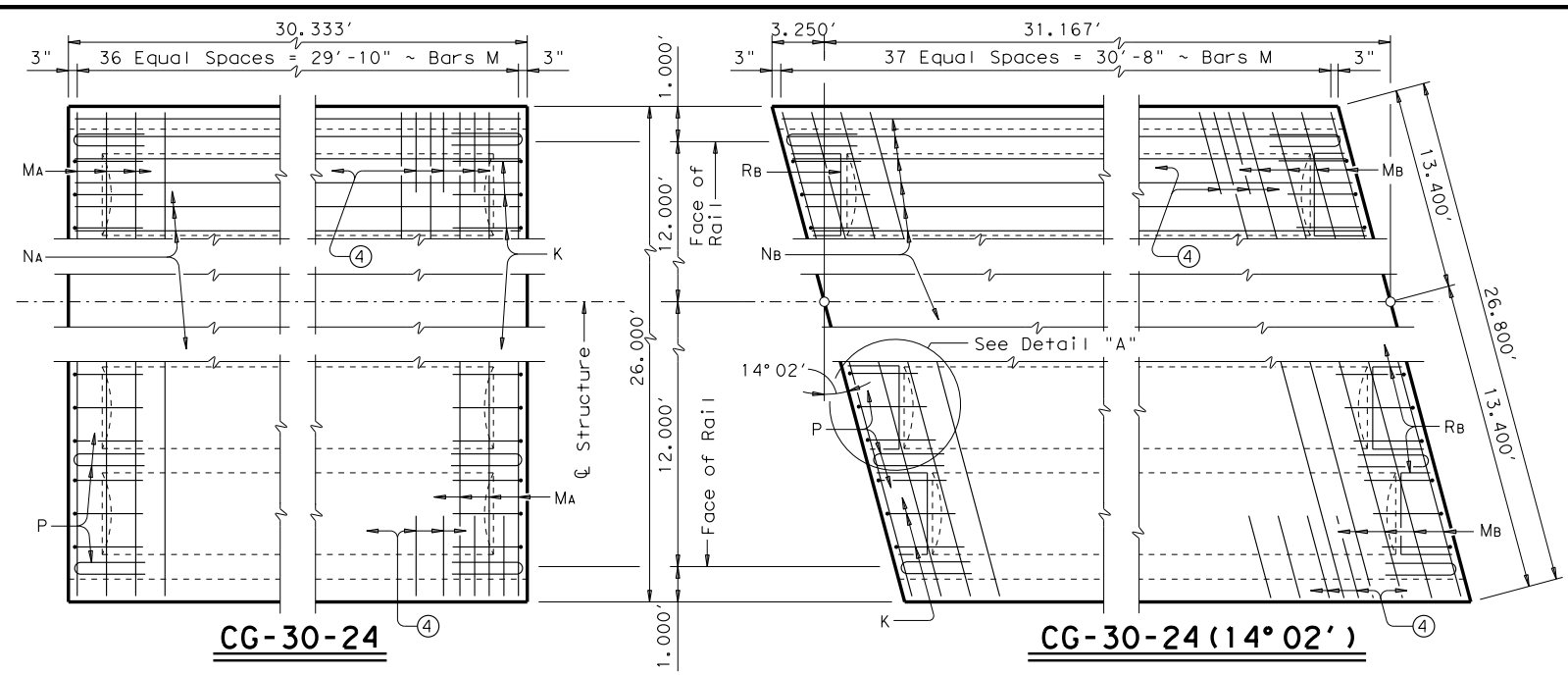


TABLE OF ESTIMATED QUANTITIES CG-30-24

Bar	No.	Size	Length	Weight
EA	36	#11	30'-0"	5,738
H1	273	#4	4'-10"	881
H2	78	#4	4'-9"	247
K	48	#4	5'-3"	168
LA	4	#5	24'-5"	102
MA	37	#5	25'-9"	994
NA	42	#5	30'-0"	1,314
P	18	#5	4'-2"	78
W1	72	#5	2'-8"	200
W2	72	#5	1'-6"	113
Reinforcing Steel Lb				9,835
Class "S" Concrete CY				31.5

TABLE OF ESTIMATED QUANTITIES CG-30-24 (14° 02')

Bar	No.	Size	Length	Weight
EB	36	#11	30'-10"	5,897
H1	287	#4	4'-10"	927
H2	82	#4	4'-9"	260
K	48	#4	5'-3"	168
LB	4	#5	25'-3"	105
MB	38	#5	26'-6"	1,050
NB	42	#5	30'-10"	1,351
P	18	#5	4'-2"	78
RB	16	#5	4'-10"	81
W1	74	#5	2'-8"	206
W2	74	#5	1'-6"	116
Reinforcing Steel Lb				10,239
Class "S" Concrete CY				33.1

TABLE OF ESTIMATED QUANTITIES CG-30-24 (26° 34')

Bar	No.	Size	Length	Weight
EC	36	#11	31'-9"	6,073
G1C	4	#5	25'-9"	107
G2	8	#5	4'-0"	33
H1	287	#4	4'-10"	927
H2	82	#4	4'-9"	260
K	48	#4	5'-3"	168
LC	4	#5	27'-2"	113
MC1	26	#5	25'-9"	698
MC2-13	24	#5	13'-9"AV	344
Nc	42	#5	31'-9"	1,391
P	18	#5	4'-2"	78
Rc	16	#5	5'-8"	95
W1	74	#5	2'-8"	206
W2	74	#5	1'-6"	116
Reinforcing Steel Lb				10,609
Class "S" Concrete CY				34.8

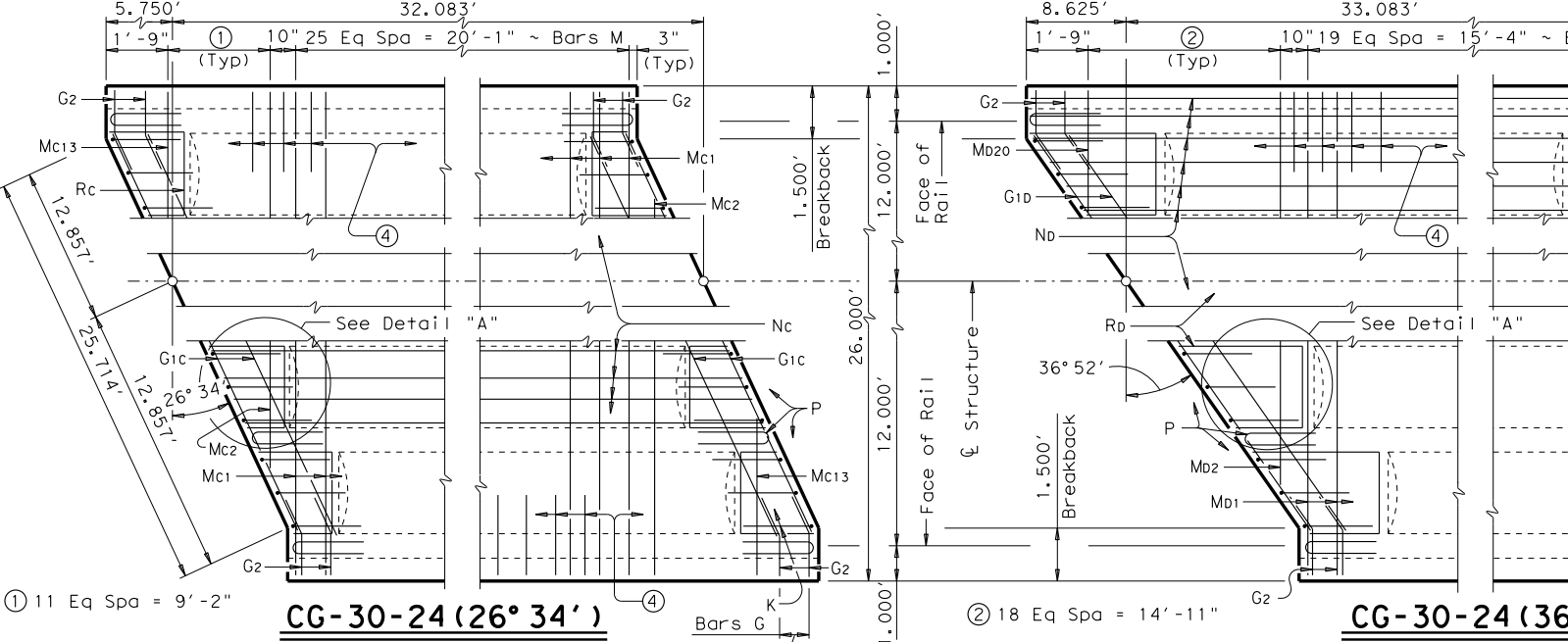
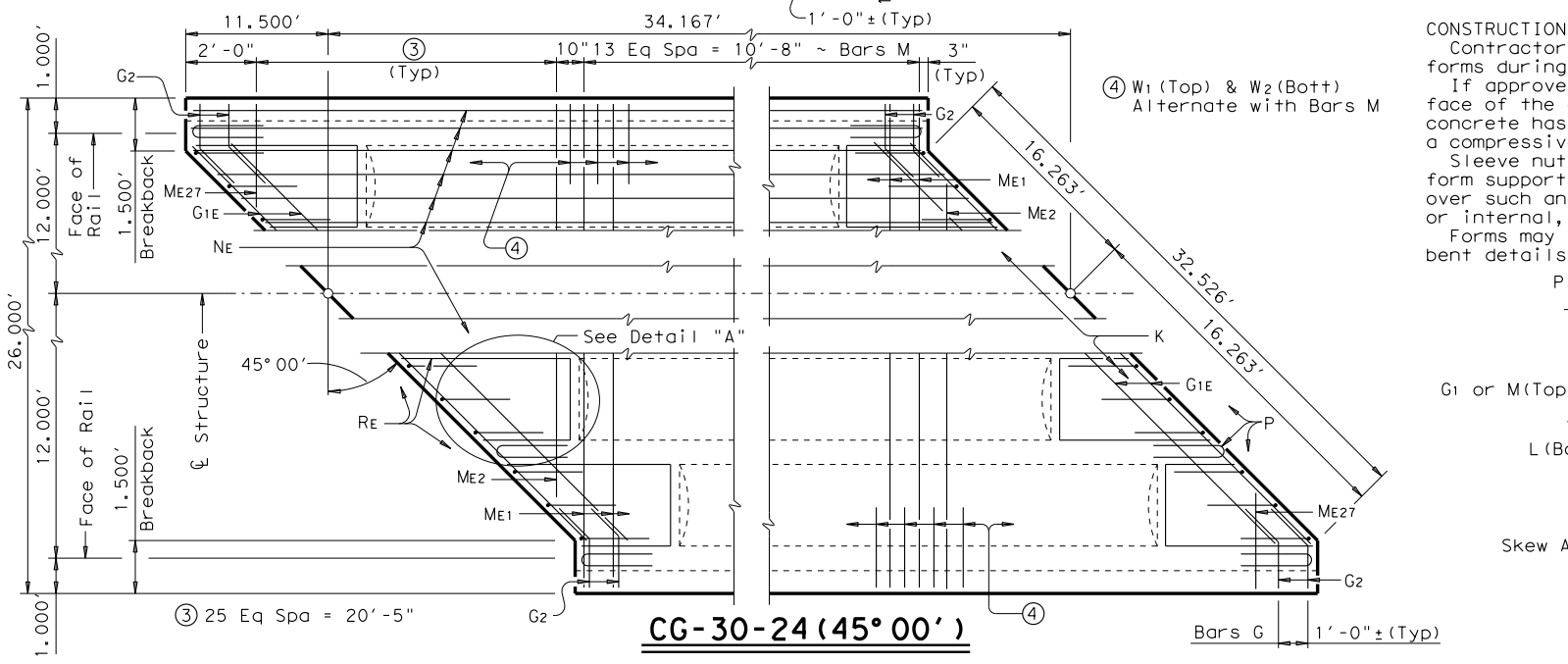


TABLE OF ESTIMATED QUANTITIES CG-30-24 (36° 52')

Bar	No.	Size	Length	Weight
ED	36	#11	32'-9"	6,264
G1D	4	#5	28'-9"	120
G2	8	#5	4'-0"	33
H1	301	#4	4'-10"	972
H2	86	#4	4'-9"	273
K	48	#4	5'-3"	168
LD	4	#5	30'-2"	126
MD1	20	#5	25'-9"	537
MD2-20	38	#5	13'-5"AV	532
ND	42	#5	32'-9"	1,435
P	18	#5	4'-2"	78
RD	16	#5	6'-7"	110
W1	76	#5	2'-8"	211
W2	76	#5	1'-6"	119
Reinforcing Steel Lb				10,978
Class "S" Concrete CY				36.7

TABLE OF ESTIMATED QUANTITIES CG-30-24 (45° 00')

Bar	No.	Size	Length	Weight
EE	36	#11	33'-10"	6,471
G1E	4	#5	32'-6"	136
G2	8	#5	4'-0"	33
H1	315	#4	4'-10"	1,017
H2	90	#4	4'-9"	286
K	48	#4	5'-3"	168
LE	4	#5	34'-0"	142
ME1	14	#5	25'-9"	376
ME2-27	52	#5	13'-5"AV	728
NE	42	#5	33'-10"	1,482
P	18	#5	4'-2"	78
RE	16	#5	7'-7"	127
W1	78	#5	2'-8"	217
W2	78	#5	1'-6"	122
Reinforcing Steel Lb				11,383
Class "S" Concrete CY				38.8



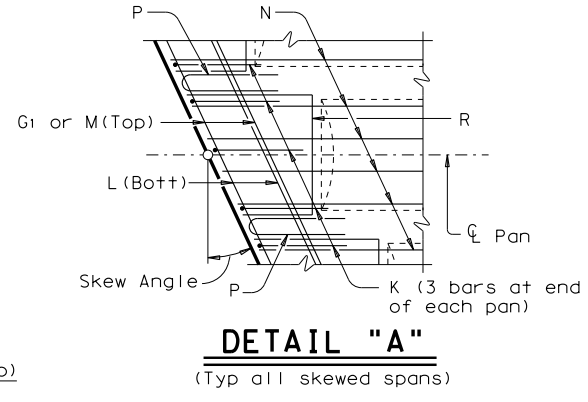
CONSTRUCTION NOTES:

Contractor must provide adequate means of supporting outside forms during placement of concrete.

If approved by the Engineer, forms for the vertical outside face of the outside girder and overhang may be removed after the concrete has aged for a minimum of 24 hours and has attained a compressive strength of 1,500 psi.

Sleeve nuts or coil tie anchors may be welded to Bars M as a form support only, provided at least 1" concrete cover is provided over such anchors. Other adequate form bracing methods, external or internal, are acceptable.

Forms may be supported from bent caps only when specified on bent details.



GENERAL NOTES:

Designed according to AASHTO LRFD Specifications.

This standard is drawn showing skews right forward. See Layout for actual skew direction.

See CG-MD for bearing, joint, drain details, quantity adjustments and additional reinforcing.

All reinforcing shall be Grade 60.

Concrete strength $f'_c = 4,000$ psi.

Spans are to be paid for under Item 422, "Concrete Superstructures". Pay Quantity of Class "S" Concrete will be Plan Quantity which includes the quantity of concrete required to provide a camber in top of slab after removal of forms of $\frac{3}{8}$ " at Centerline Span.

See standard CGRAD for rail anchorage cast with span.

HL93 LOADING SHEET 1 OF 2

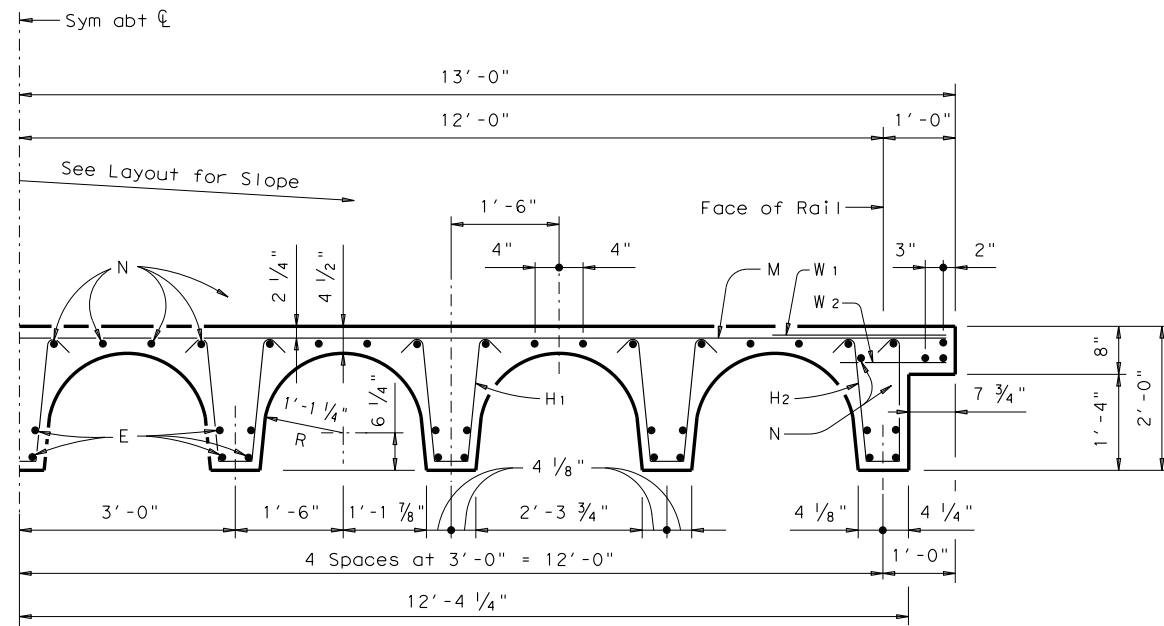
Texas Department of Transportation Bridge Division Standard

30'-4" CONCRETE SLAB AND GIRDER SPANS 24 FT ROADWAY

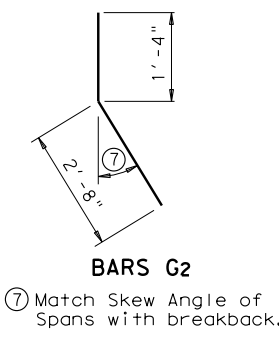
CG-30-24

FILE: scg01sts.dgn	DN: TxDOT	CK: TxDOT	DW: TxDOT	CK: TxDOT
©TxDOT October 2005	CONT	SECT	JOB	HIGHWAY
REVISIONS	DIST	COUNTY	SHEET NO.	

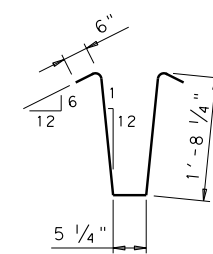
DISCLAIMER: The use of this standard is governed by the "Texas Engineering Practice Act". No warranty of any kind is made by TxDOT for any purpose whatsoever. TxDOT assumes no responsibility for the conversion of this standard to other formats or for incorrect results or damages resulting from its use.



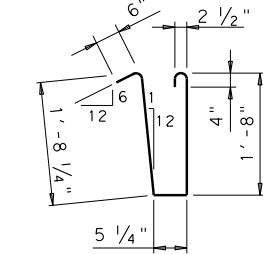
TYPICAL HALF TRANSVERSE SECTION



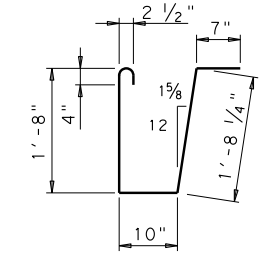
BARS G2



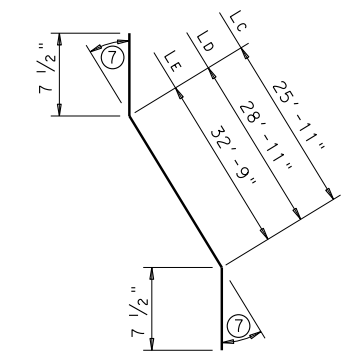
BARS H1



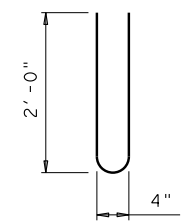
BARS H2



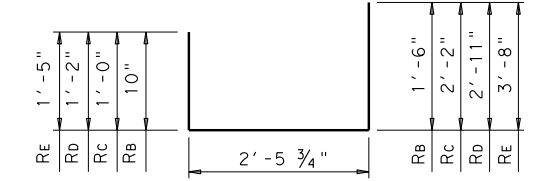
BARS K



BARS L



BARS P

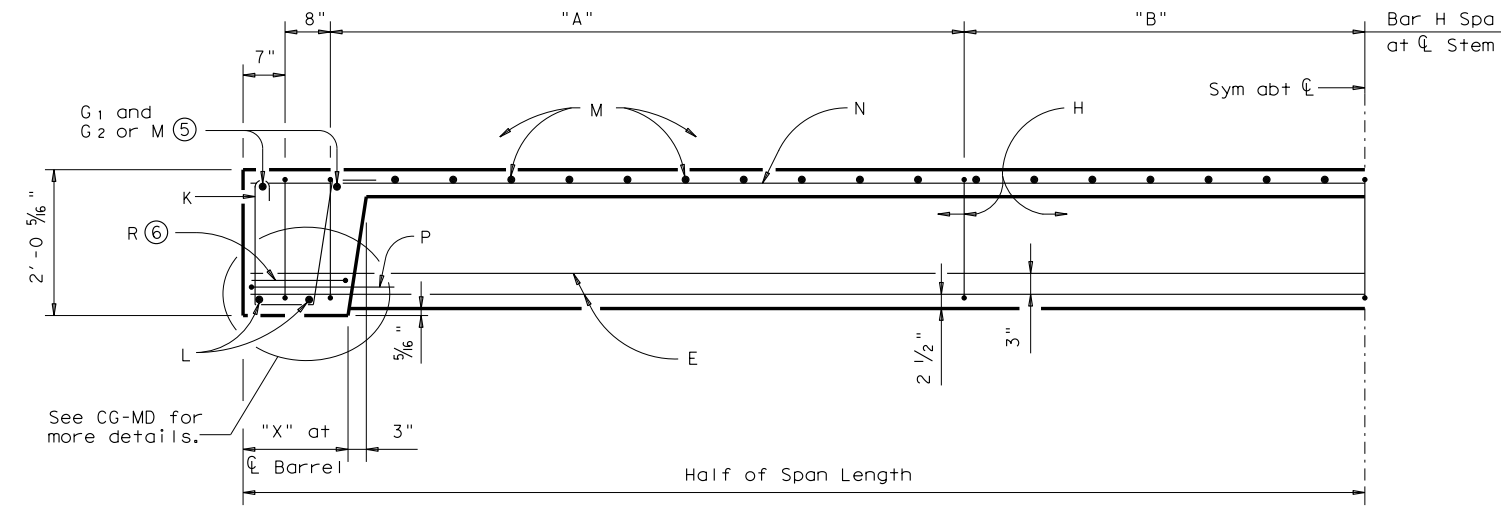


BARS R

MA, C1, D1, E1	25'-9"
Mb	26'-6"
Mc2	22'-11"
Mc13	4'-7"
Mc2-13	13'-9" Avg
Md2	23'-4"
Md20	3'-6"
Md2-20	13'-5" Avg
Me2	23'-7"
Me27	3'-2"
Me2-27	13'-4 1/2" Avg

BARS M

Span	30'-4"	31'-2"	32'-1"	33'-1"	34'-2"
"A"	11 ES=7'-0"	12 ES=7'-6"	12 ES=7'-11"	13 ES=8'-5"	14 ES=8'-11"
"B"	7 ES=6'-11"	7 ES=6'-10"	7 ES=6'-10 1/2"	7 ES=6'-10 1/2"	7 ES=6'-11"
"X"	1'-0 1/2"	1'-5 1/2"	1'-11"	2'-5"	2'-11 1/2"



TYPICAL HALF GIRDER SECTION

- ⑤ G1 and G2 when skew is greater than 15°00'.
- ⑥ On skewed spans only.



30'-4" CONCRETE SLAB AND GIRDER SPANS
24 FT ROADWAY

CG-30-24

FILE: scg01sts.dgn	DN: TxDOT	CK: TxDOT	DW: TxDOT	CK: TxDOT
©TxDOT October 2005	CONT	SECT	JOB	HIGHWAY
REVISIONS				
DIST	COUNTY		SHEET NO.	

DATE:
FILE: