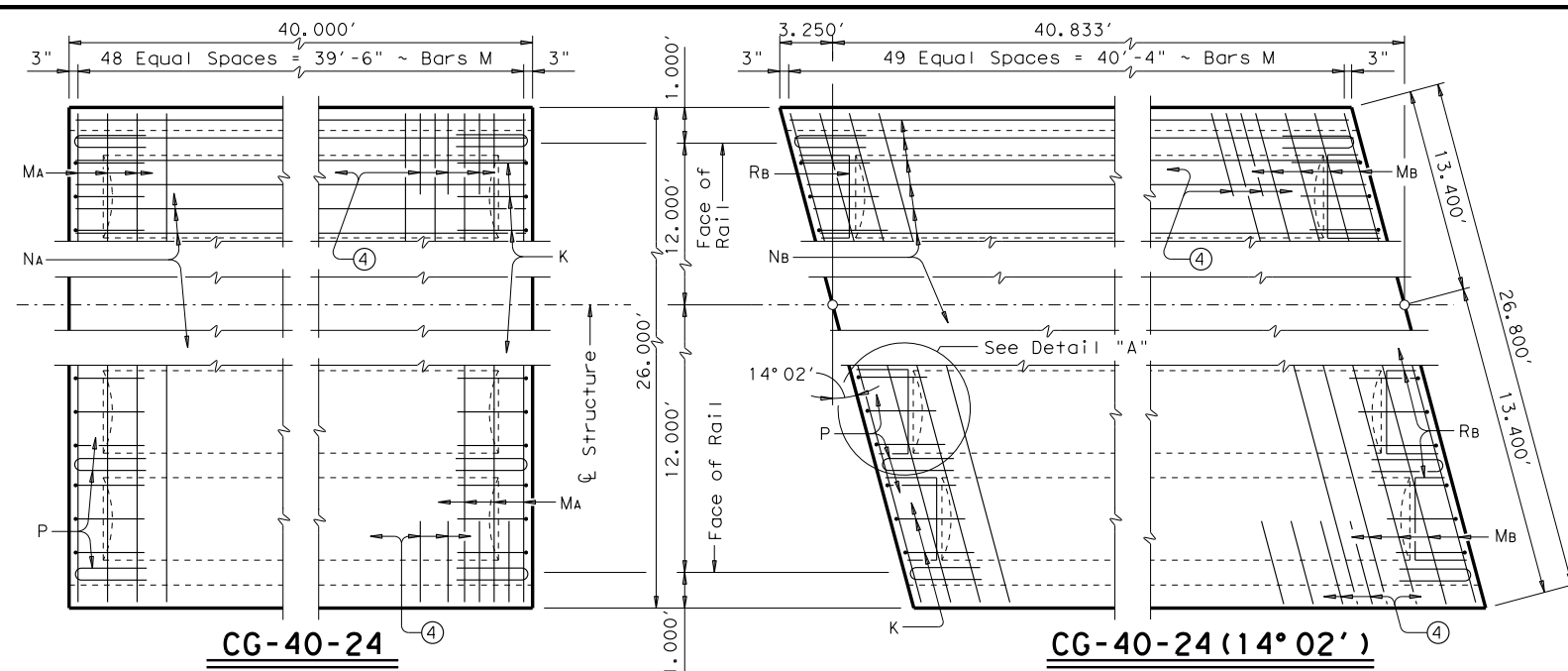


DISCLAIMER: The use of this standard is governed by the "Texas Engineering Practice Act". No warranty of any kind is made by TxDOT for any purpose whatsoever. TxDOT assumes no responsibility for the conversion of this standard to other formats or for incorrect results or damages resulting from its use.



**TABLE OF ESTIMATED QUANTITIES CG-40-24**

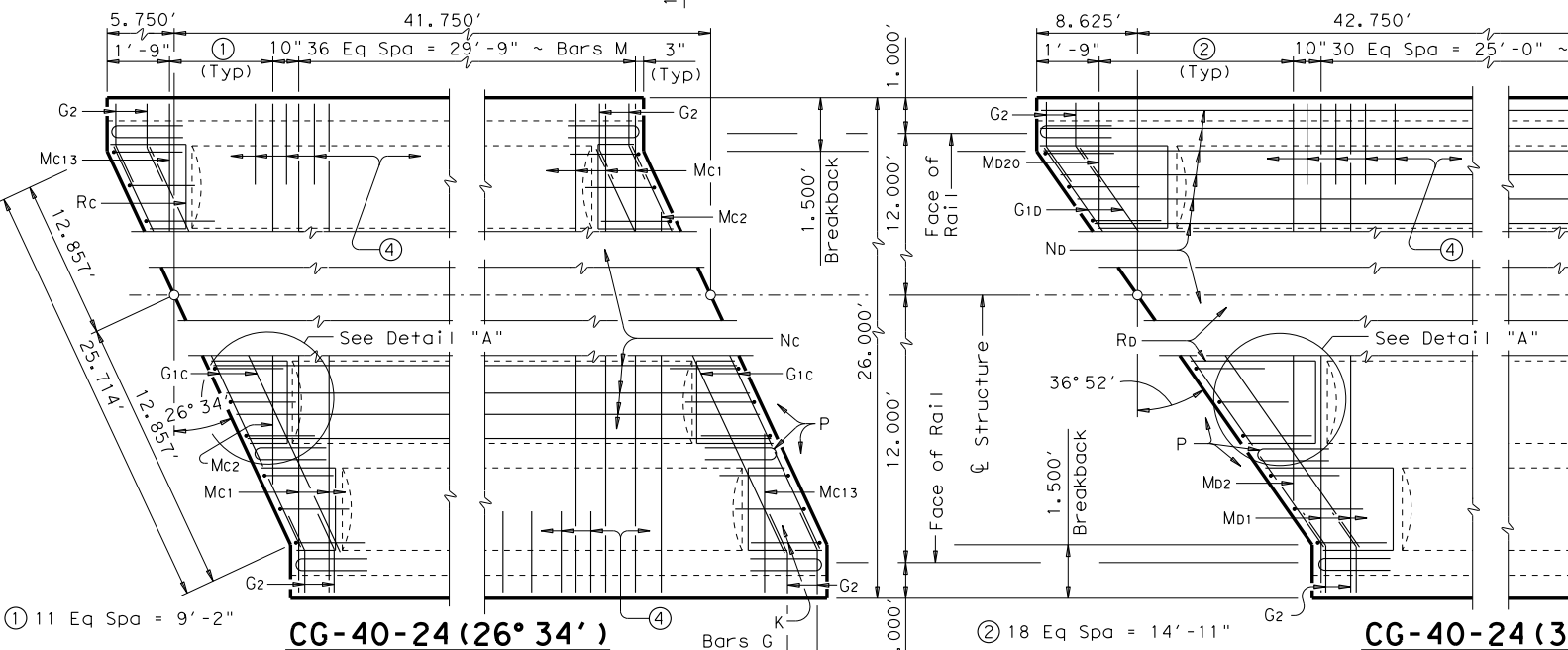
Bar	No.	Size	Length	Weight
EA	36	#11	39'-8"	7,587
H1	329	#4	6'-4"	1,392
H2	94	#4	6'-3"	392
K	48	#4	6'-9"	216
LA	4	#5	24'-5"	102
MA	49	#5	25'-9"	1,316
NA	42	#5	39'-8"	1,738
P	18	#5	4'-2"	78
W1	96	#5	2'-8"	268
W2	96	#5	1'-6"	150
Reinforcing Steel				Lb 13,239
Class "S" Concrete				CY 51.4

**TABLE OF ESTIMATED QUANTITIES CG-40-24 (14° 02')**

Bar	No.	Size	Length	Weight
Eb	36	#11	40'-6"	7,746
H1	329	#4	6'-4"	1,392
H2	94	#4	6'-3"	392
K	48	#4	6'-9"	216
LB	4	#5	25'-2"	105
MB	50	#5	26'-6"	1,382
Nb	42	#5	40'-6"	1,774
P	18	#5	4'-2"	78
RB	16	#5	4'-10"	81
W1	98	#5	2'-8"	273
W2	98	#5	1'-6"	153
Reinforcing Steel				Lb 13,592
Class "S" Concrete				CY 53.6

**TABLE OF ESTIMATED QUANTITIES CG-40-24 (26° 34')**

Bar	No.	Size	Length	Weight
Ec	36	#11	41'-5"	7,922
G1c	4	#5	25'-9"	107
G2	8	#5	4'-0"	33
H1	343	#4	6'-4"	1,451
H2	98	#4	6'-3"	409
K	48	#4	6'-9"	216
Lc	4	#5	27'-2"	113
Mc1	37	#5	25'-9"	994
Mc2-13	24	#5	13'-9"AV	344
Nc	42	#5	41'-5"	1,814
P	18	#5	4'-2"	78
Rc	16	#5	5'-8"	95
W1	96	#5	2'-8"	267
W2	96	#5	1'-6"	150
Reinforcing Steel				Lb 13,993
Class "S" Concrete				CY 56.0

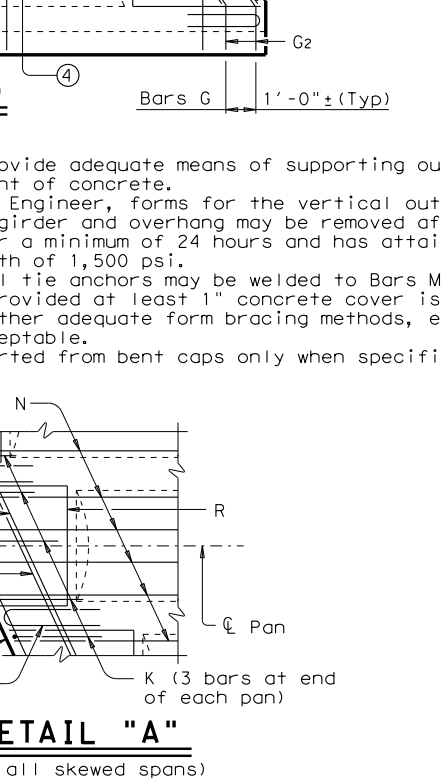
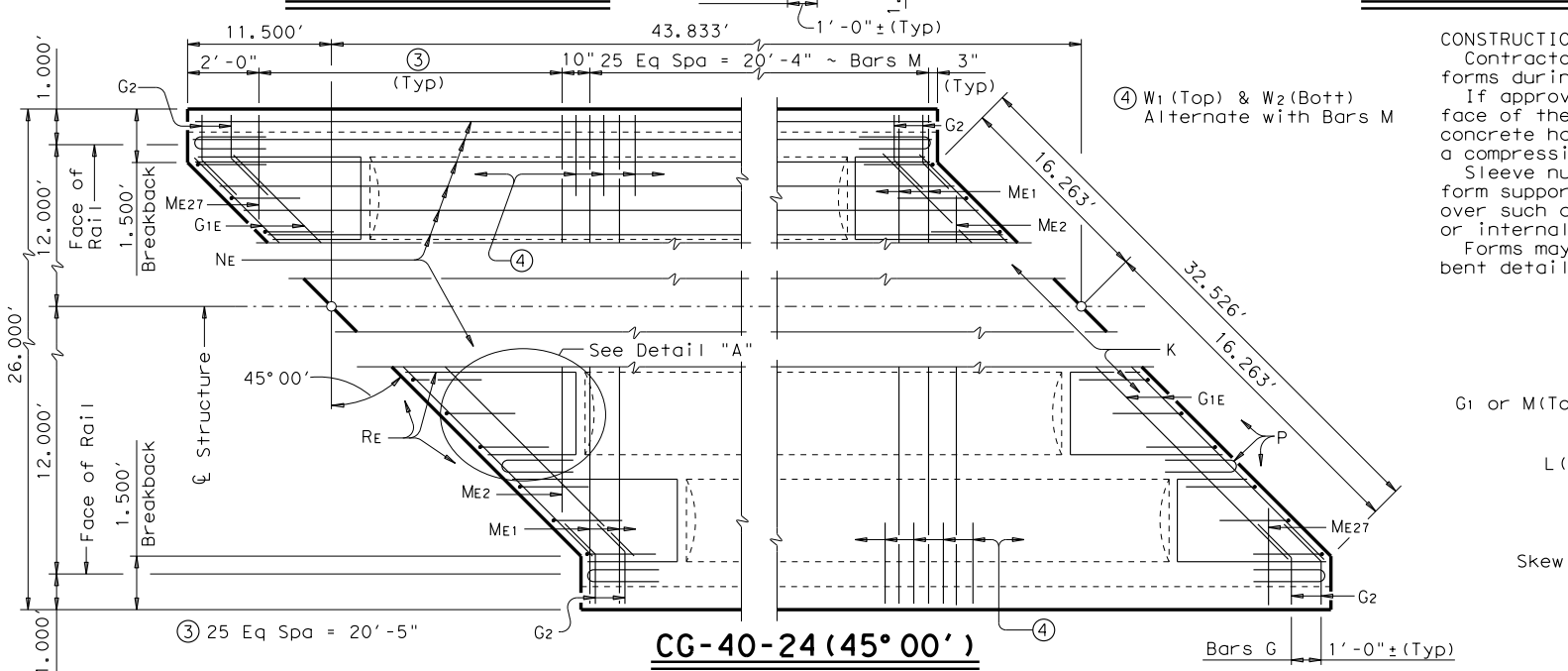


**TABLE OF ESTIMATED QUANTITIES CG-40-24 (36° 52')**

Bar	No.	Size	Length	Weight
Ed	36	#11	42'-5"	8,113
G1d	4	#5	28'-9"	120
G2	8	#5	4'-0"	33
H1	357	#4	6'-4"	1,510
H2	102	#4	6'-3"	426
K	48	#4	6'-9"	216
Ld	4	#5	30'-2"	126
MD1	31	#5	25'-9"	833
MD2-20	38	#5	13'-5"AV	532
Nd	42	#5	42'-5"	1,858
P	18	#5	4'-2"	78
Rd	16	#5	6'-7"	110
W1	98	#5	2'-8"	273
W2	98	#5	1'-6"	153
Reinforcing Steel				Lb 14,381
Class "S" Concrete				CY 58.6

**TABLE OF ESTIMATED QUANTITIES CG-40-24 (45° 00')**

Bar	No.	Size	Length	Weight
Ee	36	#11	43'-6"	8,320
G1e	4	#5	32'-6"	136
G2	8	#5	4'-0"	33
H1	371	#4	6'-4"	1,570
H2	106	#4	6'-3"	443
K	48	#4	6'-9"	216
Le	4	#5	34'-0"	142
ME1	26	#5	25'-9"	698
ME2-27	52	#5	13'-5"AV	728
Ne	42	#5	43'-6"	1,906
P	18	#5	4'-2"	78
Re	16	#5	7'-7"	127
W1	102	#5	2'-8"	284
W2	102	#5	1'-6"	160
Reinforcing Steel				Lb 14,841
Class "S" Concrete				CY 61.4



**GENERAL NOTES:**

- Designed according to AASHTO LRFD Specifications.
- This standard is drawn showing skews right forward. See Layout for actual skew direction.
- See CG-MD for bearing, joint, drain details, quantity adjustments and additional reinforcing.
- All reinforcing shall be Grade 60.
- Concrete strength  $f'_c = 4,000$  psi.
- Spans are to be paid for under Item 422, "Concrete Superstructures". Pay Quantity of Class "S" Concrete will be Plan Quantity which includes the quantity of concrete required to provide a camber in top of slab after removal of forms of 1/2" at Centerline Span.
- See standard CGRAD for rail anchorage cast with span.

HL93 LOADING SHEET 1 OF 2

Texas Department of Transportation  
Bridge Division Standard

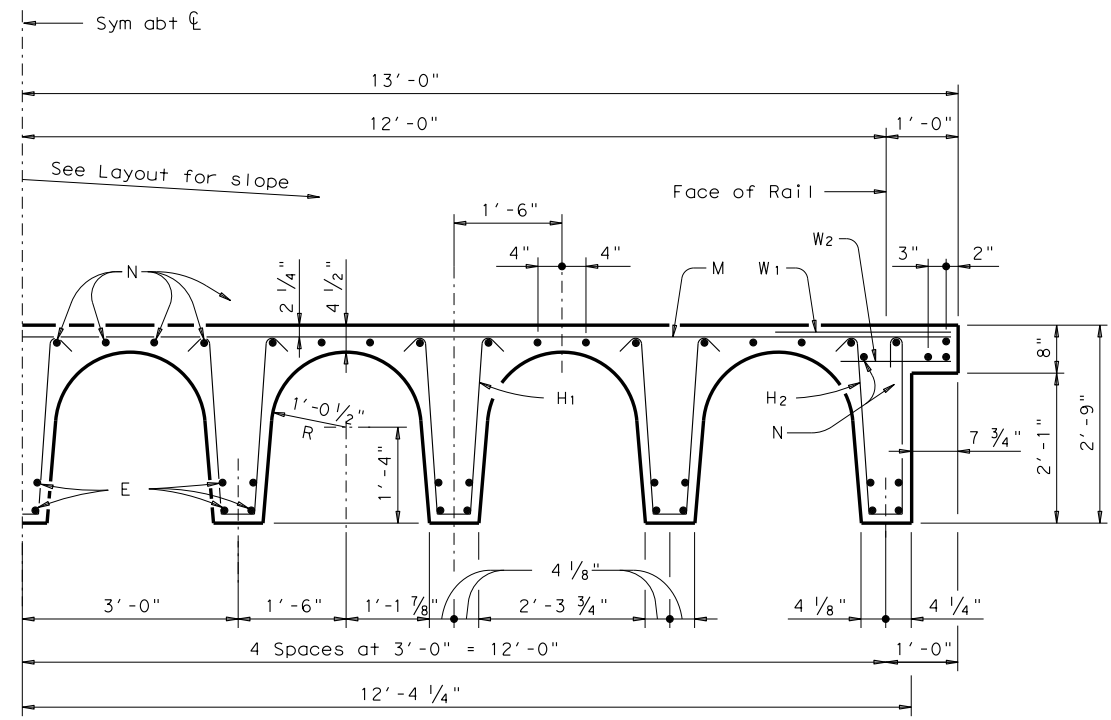
**40'-0" CONCRETE SLAB AND GIRDER SPANS  
24 FT ROADWAY**

**CG-40-24**

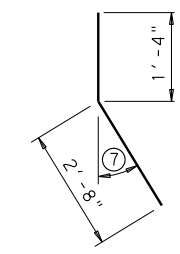
FILE: scg06sts.dgn	DN: TxDOT	CK: TxDOT	DW: TxDOT	CK: TxDOT
©TxDOT October 2005	CONT	SECT	JOB	HIGHWAY
REVISIONS	DIST	COUNTY	SHEET NO.	

DATE: FILE:

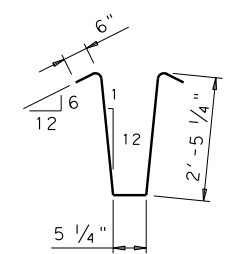
DISCLAIMER: The use of this standard is governed by the "Texas Engineering Practice Act". No warranty of any kind is made by TxDOT for any purpose whatsoever. TxDOT assumes no responsibility for the conversion of this standard to other formats or for incorrect results or damages resulting from its use.



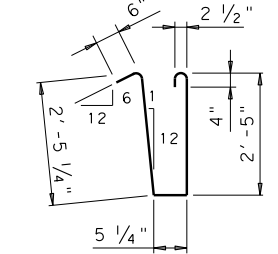
**TYPICAL HALF TRANSVERSE SECTION**



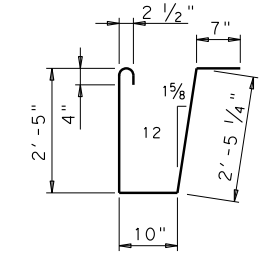
**BARS G2**  
⑦ Match Skew Angle of Spans with breakback.



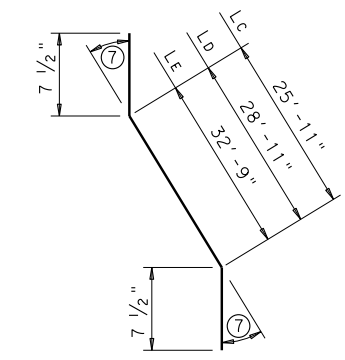
**BARS H1**



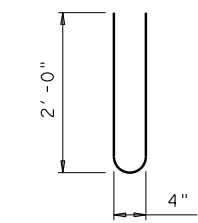
**BARS H2**



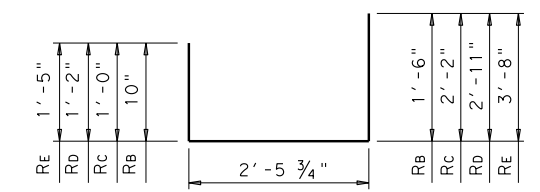
**BARS K**



**BARS L**



**BARS P**

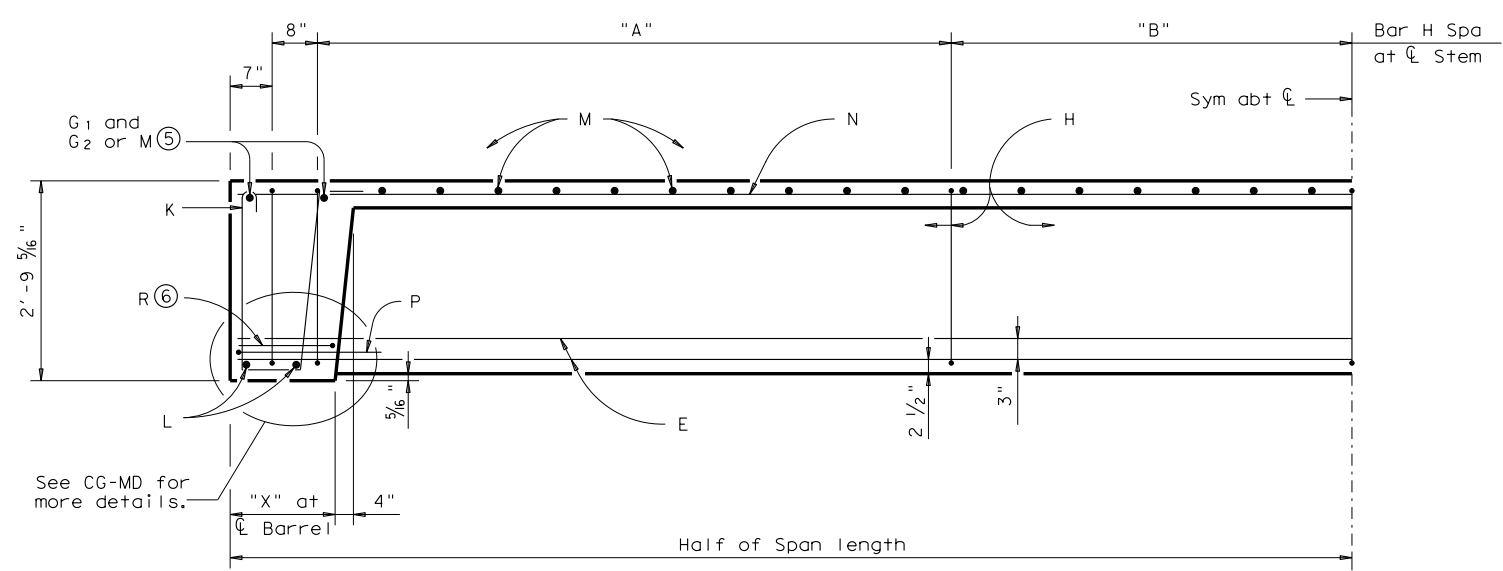


**BARS R**

MA, C1, D1, E1	25'-9"
MB	26'-6"
MC2	22'-11"
MC13	4'-7"
MC2-13	13'-9" Avg
MD2	23'-4"
MD20	3'-6"
MD2-20	13'-5" Avg
ME2	23'-7"
ME27	3'-2"
ME2-27	13'-4 1/2" Avg

**BARS M**

Span	40'-0"	40'-10"	41'-9"	42'-9"	43'-10"
"A"	13 ES=9'-11"	13 ES=10'-4"	14 ES=10'-9"	15 ES=11'-3"	16 ES=11'-10"
"B"	9 ES=8'-10"	9 ES=8'-10"	9 ES=8'-10 1/2"	9 ES=8'-10 1/2"	9 ES=8'-10"
"X"	1'-0 1/2"	1'-5 1/2"	1'-11"	2'-5"	2'-11 1/2"



**TYPICAL HALF GIRDER SECTION**

- ⑤ G1 and G2 when skew is greater than 15°00'.
- ⑥ On skewed spans only.



**40'-0" CONCRETE SLAB AND GIRDER SPANS  
24 FT ROADWAY**

**CG-40-24**

FILE: scg06sts.dgn	DN: TxDOT	CK: TxDOT	DW: TxDOT	CK: TxDOT
©TxDOT October 2005	CONT	SECT	JOB	HIGHWAY
REVISIONS				
DIST	COUNTY	SHEET NO.		

DATE:  
FILE: