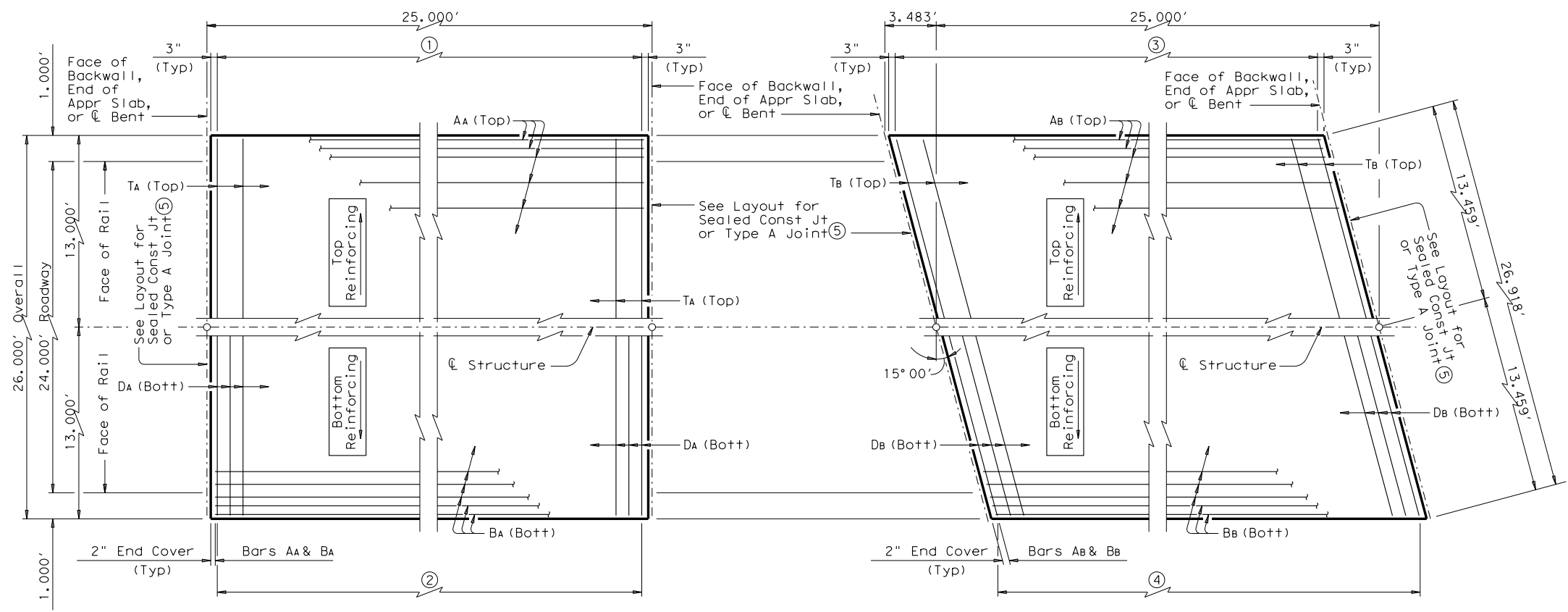


DISCLAIMER: The use of this standard is governed by the "Texas Engineering Practice Act". No warranty of any kind is made by TxDOT for any purpose whatsoever. TxDOT assumes no responsibility for the conversion of this standard to other formats or for incorrect results or damages resulting from its use.



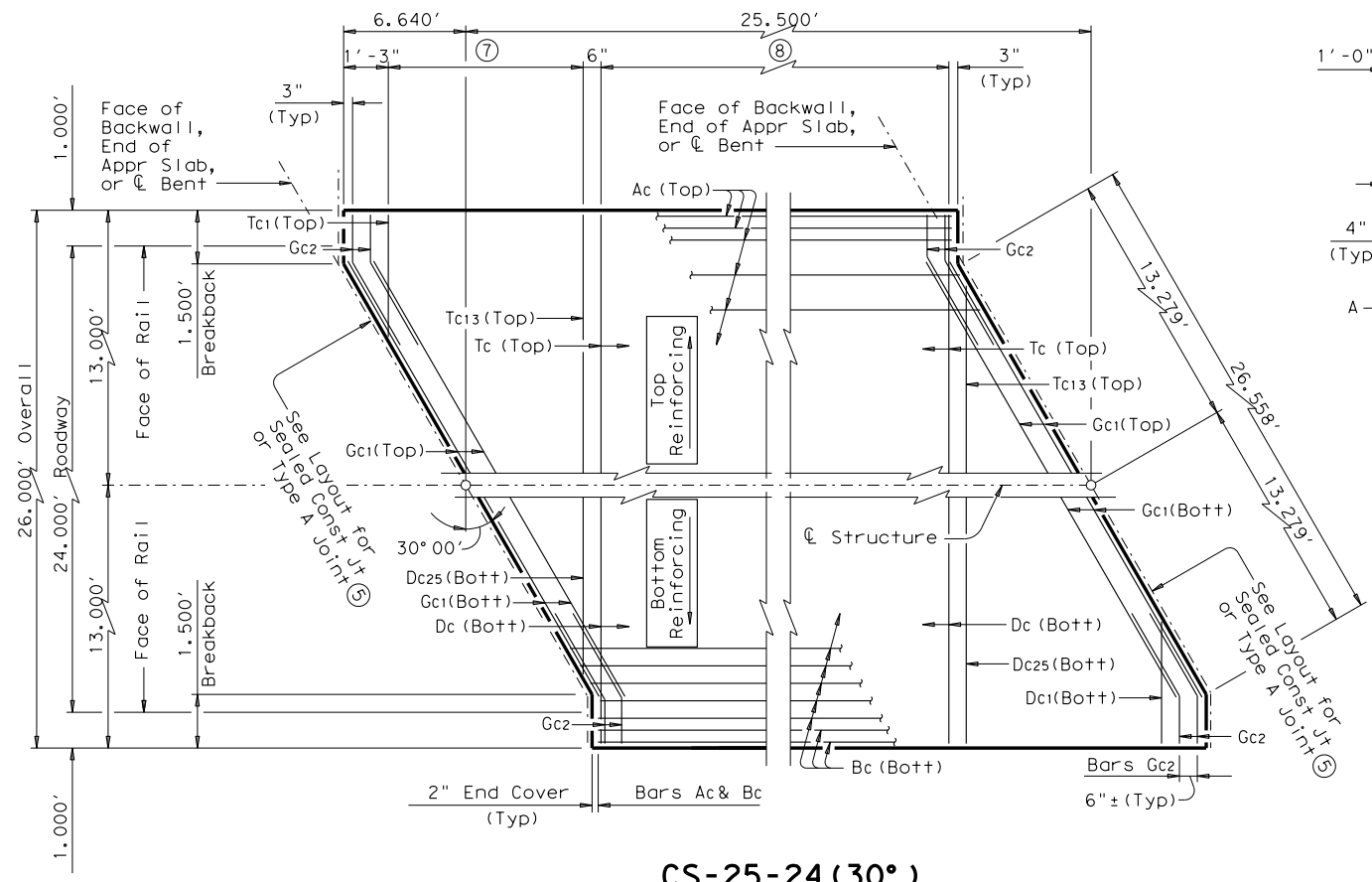
- ① Bars TA (Top) at 12" Max Spacing
- ② Bars DA (Bott) at 6" Max Spacing

- ③ Bars TB (Top) at 12" Max Spacing
- ④ Bars DB (Bott) at 6" Max Spacing

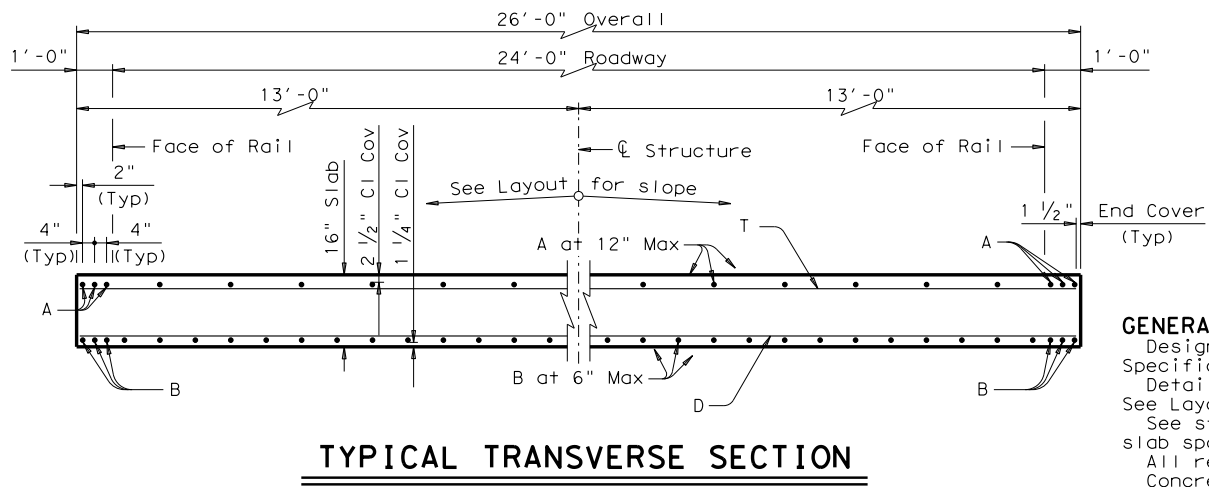
TABLE OF ESTIMATED QUANTITIES ⑤					TABLE OF ESTIMATED QUANTITIES ⑤				
CS-25-24					CS-25-24 (15°)				
Bar	No.	Size	Length	Weight	Bar	No.	Size	Length	Weight
AA	30	# 4	24' - 8"	494	AB	30	# 4	24' - 8"	494
BA	54	# 8	24' - 8"	3,556	Bb	54	# 8	24' - 8"	3,556
DA	50	# 4	25' - 9"	860	Db	50	# 4	26' - 8"	891
TA	26	# 4	25' - 9"	447	Tb	26	# 4	26' - 8"	463
Reinforcing Steel Lb					5,357				
Class "S" Concrete ⑥ CY					32.1				

- ⑤ See standard CS-MD for Fixed or Expansion Joint Details.
- ⑥ Provide Class S (HPC) if shown elsewhere in the plans.

TABLE OF ESTIMATED QUANTITIES ⑤				
CS-25-24 (30°)				
Bar	No.	Size	Length	Weight
Ac	30	# 4	25' - 2"	504
Bc	54	# 9	25' - 2"	4,621
Dc	25	# 4	25' - 9"	430
Dc1-25	50	# 4	13' - 8"AV	456
Gc1	8	# 5	26' - 7"	222
Gc2	16	# 5	4' - 0"	67
Tc	13	# 4	25' - 9"	224
Tc1-13	26	# 4	13' - 8"AV	237
Reinforcing Steel Lb				
6,761				
Class "S" Concrete ⑥ CY				
32.8				



- ⑦ Bars Tc 1-13 (Top) at 12" Max Spacing = 11' - 9 1/2"
- Bars Dc 1-25 (Bott) at 6" Max Spacing = 11' - 9 1/2"
- ⑧ Bars Tc (Top) at 12" Max Spacing
- Bars Dc (Bott) at 6" Max Spacing



BARS DC	
Dc1	3' - 5"
Dc25	23' - 10"
Dc1-25	13' - 7 1/2" Avg

BARS Tc	
Tc1	3' - 5"
Tc13	23' - 10"
Tc1-13	13' - 7 1/2" Avg

GENERAL NOTES:
 Designed according to AASHTO LRFD Specifications.
 Details shown are for right forward skew. See Layout for actual skew direction. See standard CS-MD for additional slab span details and quantity adjustments. All reinforcing shall be Grade 60. Concrete strength f'c = 4,000 psi. This standard does not support the use of Transition Bents.

HL93 LOADING

		Bridge Division Standard	
25' C-I-P CONCRETE SLAB SPANS			
24 FT ROADWAY 0°-30° SKEW			
CS-25-24			
FILE: scs01ste.dgn	DN: TxDOT	CK: TxDOT	DW: TxDOT
©TxDOT March 2009	CONT	SECT	JOB
REVISIONS			HIGHWAY
	DIST	COUNTY	SHEET NO.

DATE: FILE: