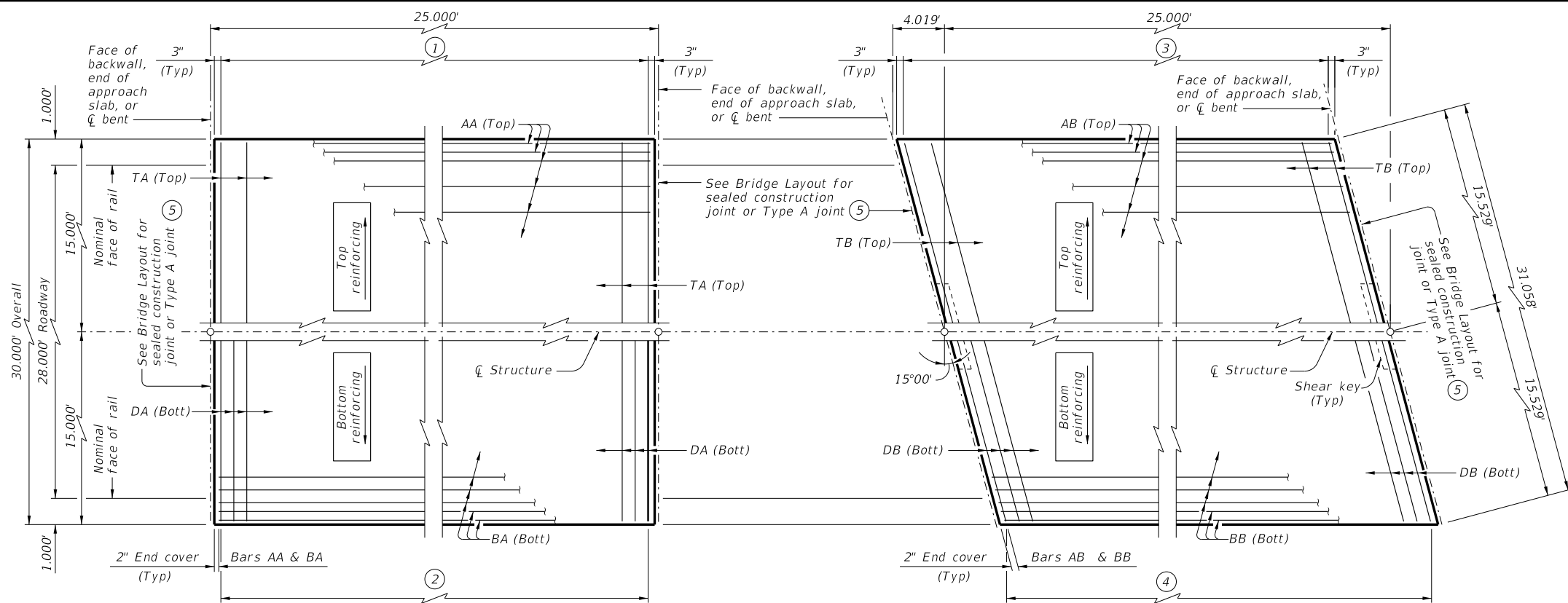


DISCLAIMER: The use of this standard is governed by the "Texas Engineering Practice Act". No warranty of any kind is made by TxDOT for any purpose whatsoever. TxDOT assumes no responsibility for the conversion of this standard to other formats or for incorrect results or damages resulting from its use.

DATE: FILE:

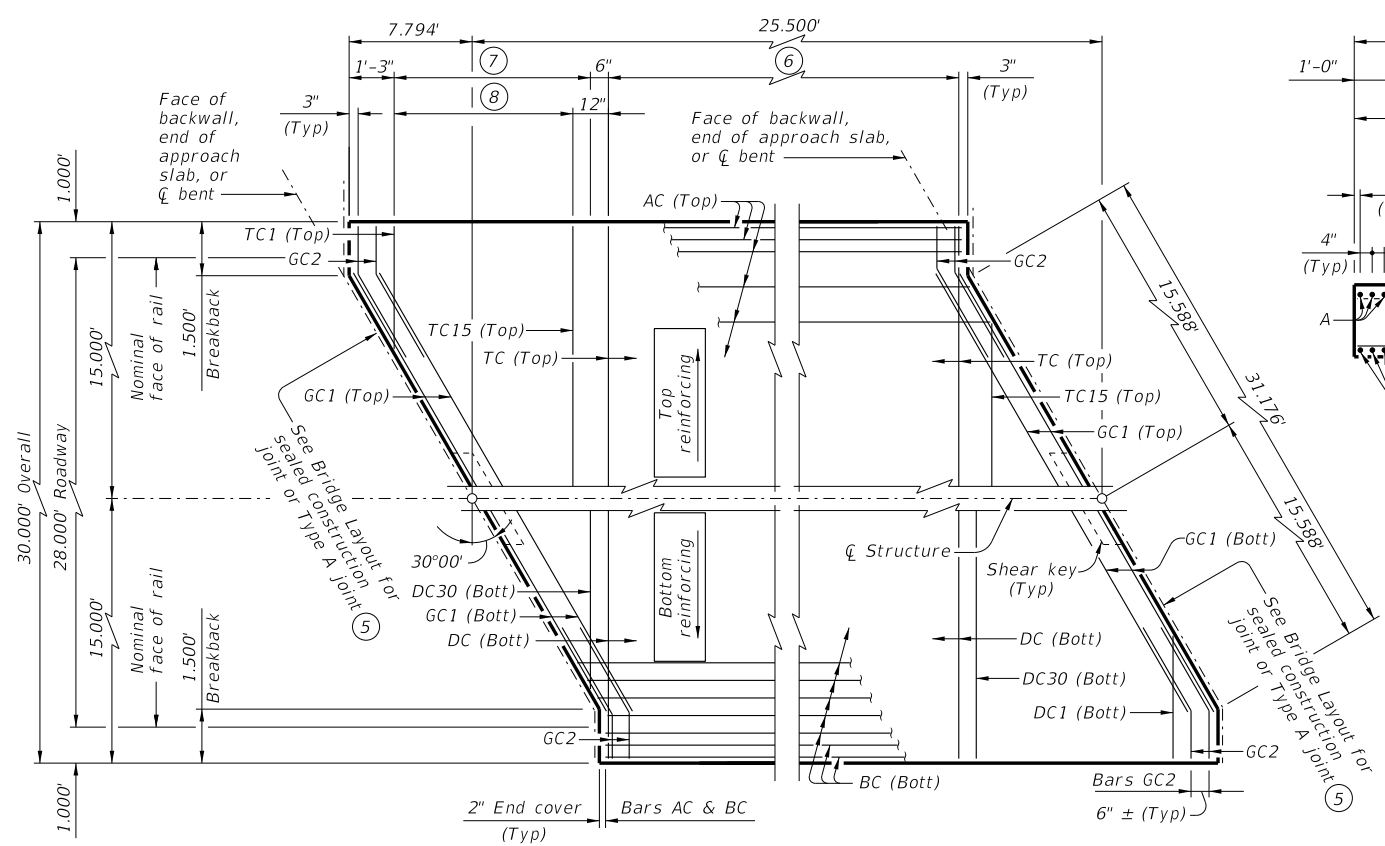


PLAN ~ CS-25-28

PLAN ~ CS-25-28(15°)

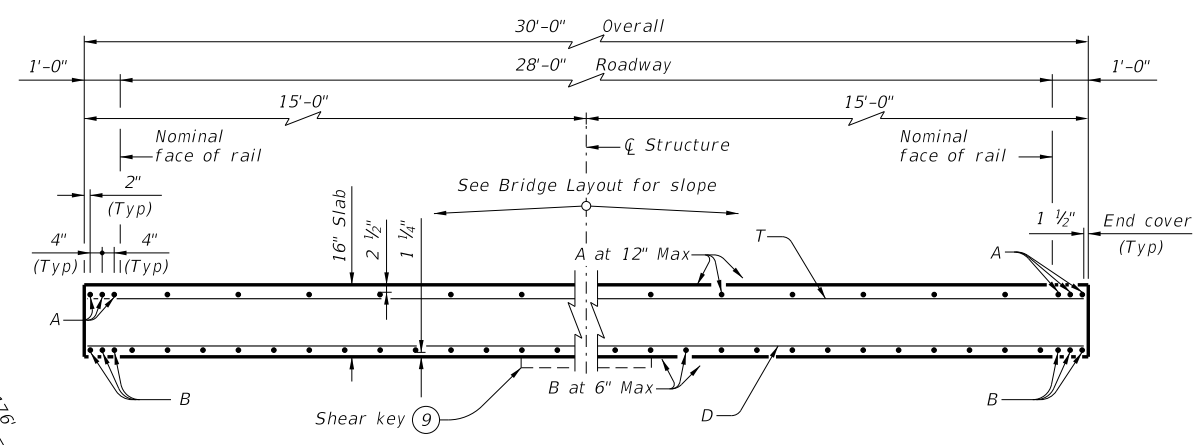
- ① Bars TA (Top) at 12" Max spacing
- ② Bars DA (Bott) at 6" Max spacing

- ③ Bars TB (Top) at 12" Max spacing
- ④ Bars DB (Bott) at 6" Max spacing



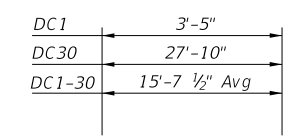
PLAN ~ CS-25-28(30°)

- ⑥ Bars TC (Top) at 12" Max spacing
Bars DC (Bott) at 6" Max spacing
- ⑦ Bars DC1-30 (Bott) at 6" Max spacing = 14'-1 1/4"
- ⑧ Bars TC1-15 (Top) at 12" Max spacing = 13'-7 1/4"

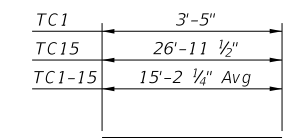


TYPICAL TRANSVERSE SECTION

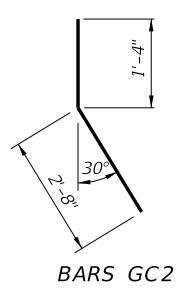
⑨ At skewed abutments and bents only.



BARS DC



BARS TC



BARS GC2

TABLE OF ESTIMATED QUANTITIES ⑤
CS-25-28

Bar	No.	Size	Length	Weight
AA	34	#4	24' - 8"	560
BA	62	#9	24' - 8"	5,200
DA	50	#4	29' - 9"	994
TA	26	#4	29' - 9"	517
Reinforcing Steel				Lb 7,271
Class "S" Concrete				CY 37.0

TABLE OF ESTIMATED QUANTITIES ⑤
CS-25-28 (15°)

Bar	No.	Size	Length	Weight
AB	34	#4	24' - 8"	560
BB	62	#9	24' - 8"	5,200
DB	50	#4	30' - 10"	1,030
TB	26	#4	30' - 10"	536
Reinforcing Steel				Lb 7,326
Class "S" Concrete				CY 37.1

TABLE OF ESTIMATED QUANTITIES ⑤
CS-25-28 (30°)

Bar	No.	Size	Length	Weight
AC	34	#4	25' - 2"	572
BC	62	#9	25' - 2"	5,305
DC	21	#4	29' - 9"	417
DC1-30	60	#4	15' - 8" Av	628
GC1	8	#5	31' - 2"	260
GC2	16	#5	4' - 0"	67
TC	11	#4	29' - 9"	219
TC1-15	30	#4	15' - 2" Av	304
Reinforcing Steel				Lb 7,772
Class "S" Concrete				CY 37.9

⑤ See standard CS-MD for fixed or expansion joint details.

TABLE OF LOAD RATING

Skew	INV	OPR
0	1.24	1.60
15	1.26	1.63
30	1.32	1.71

MATERIAL NOTES:
Provide Class S concrete (f'c = 4,000 psi).
Provide Class S (HPC) concrete if shown elsewhere in the plans.
Provide Grade 60 reinforcing steel.

GENERAL NOTES:
Designed according to AASHTO LRFD Bridge Design Specifications.
Load rated using Load and Resistance Factor Rating according to AASHTO Manual for Bridge Evaluation.
Details shown are for right forward skew. See Bridge Layout for actual skew direction.
See Miscellaneous Details for C-I-P Concrete Slab Spans (CS-MD) standard sheet for additional slab span details and quantity adjustments.
Bar laps not permitted for Bars A and B.
See applicable rail details for rail anchorage in slab.
This standard does not support the use of transition bents.

Cover dimensions are clear dimensions, unless noted otherwise.
Reinforcing bar dimensions shown are out-to-out of bar.

HL93 LOADING

Texas Department of Transportation Bridge Division Standard

25' C-I-P CONCRETE SLAB SPANS

28 FT ROADWAY 0°-30° SKEW

CS-25-28

FILE: scs02ste-21.dgn	DN: LMO	CK: BMP	DW: LJC	CK: TAR
©TxDOT July 2021	CONT	SECT	JOB	HIGHWAY
REVISIONS				
	DIST	COUNTY		SHEET NO.