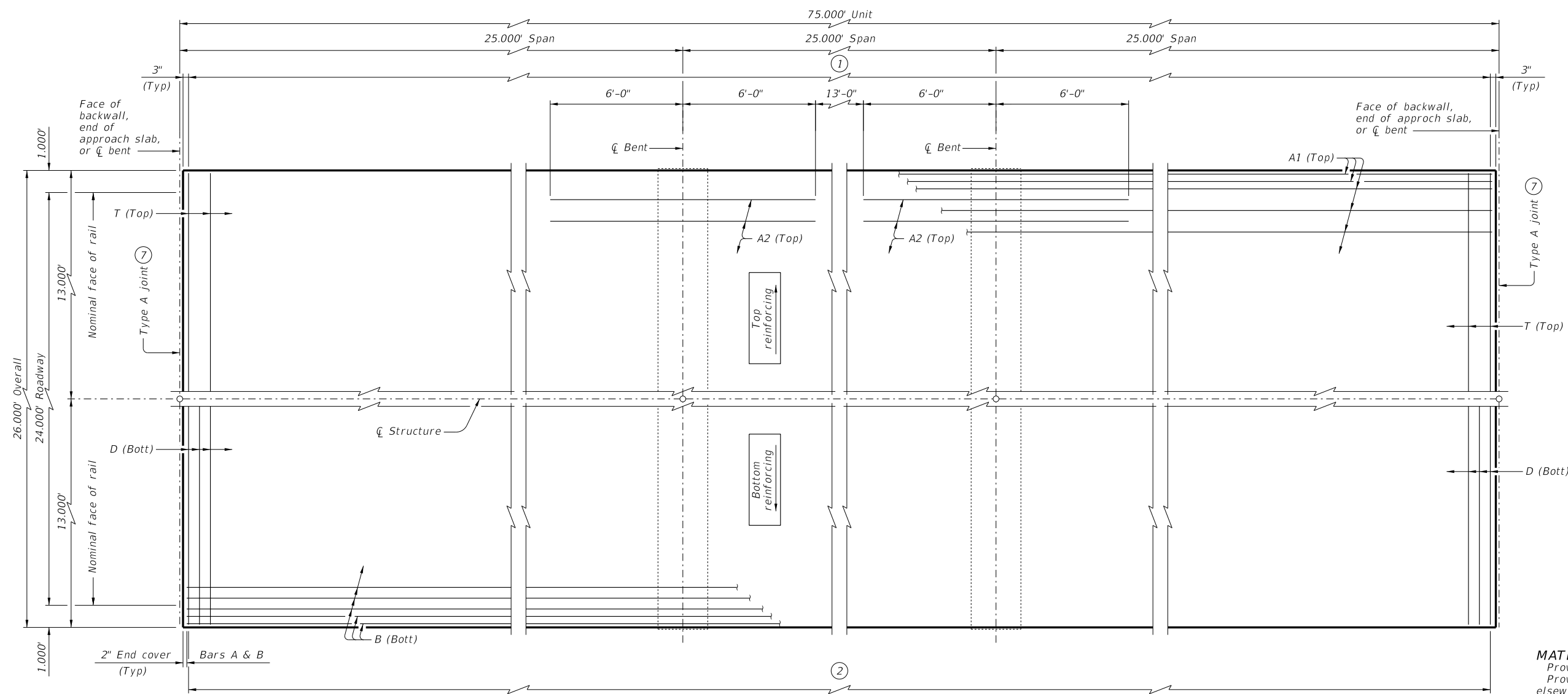
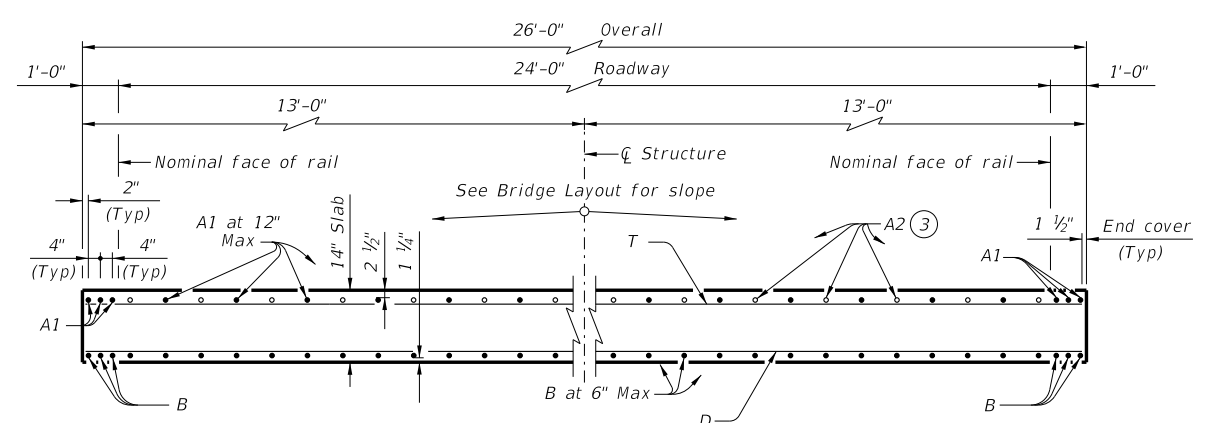


DISCLAIMER: The use of this standard is governed by the "Texas Engineering Practice Act". No warranty of any kind is made by TxDOT for any purpose whatsoever. TxDOT assumes no responsibility for the conversion of this standard to other formats or for incorrect results or damages resulting from its use.

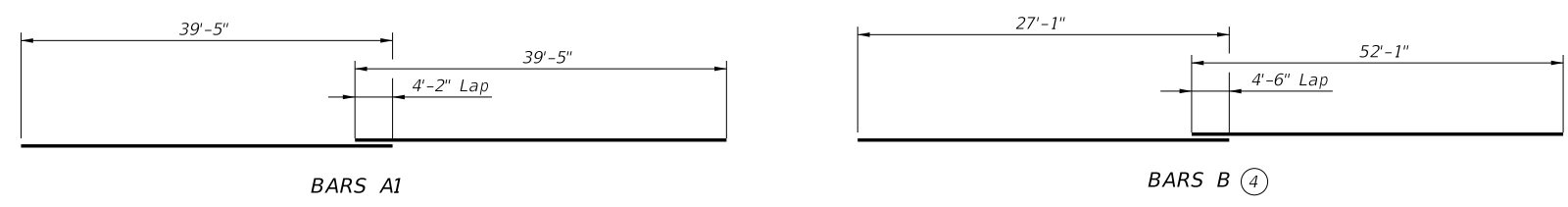
DATE: FILE:



**PLAN**



**TYPICAL TRANSVERSE SECTION**



**TABLE OF ESTIMATED QUANTITIES**  
**CS-75-24**

Bar	No.	Size	Length	Weight	
A1 (5)	30	#8	78' - 10"	6,315	
A2	50	#8	12' - 0"	1,602	
B (6)	54	#8	79' - 2"	11,414	
D	150	#4	25' - 9"	2,580	
T	76	#4	25' - 9"	1,307	
Reinforcing Steel				Lb	23,218
Class "S" Concrete				CY	84.3

- ① Bars T (Top) at 12" Max spacing
- ② Bars D (Bott) at 6" Max spacing
- ③ Place Bars A2 between Bars A1 over bent. (See PLAN for placement.)
- ④ Alternate splices over supports.
- ⑤ Length shown includes one 4'-2" lap splice.
- ⑥ Length shown includes one 4'-6" lap splice.
- ⑦ See standard CS-MD for expansion joint details.

**TABLE OF LOAD RATING**

INV	OPR
1.08	1.40

**MATERIAL NOTES:**  
Provide Class S concrete (f'c = 4,000 psi).  
Provide Class S (HPC) concrete if shown elsewhere in the plans.  
Provide Grade 60 reinforcing steel.

**GENERAL NOTES:**  
Designed according to AASHTO LRFD Bridge Design Specifications.  
Load rated using Load and Resistance Factor Rating according to AASHTO Manual for Bridge Evaluation.  
See Miscellaneous Details for C-I-P Concrete Slab Spans (CS-MD) standard sheet for additional slab span details.  
Additional bar laps not permitted for Bars A1 and B.  
See applicable rail details for rail anchorage in slab.  
This standard does not support the use of transition bents.

Cover dimensions are clear dimensions, unless noted otherwise.  
Reinforcing bar dimensions shown are out-to-out of bar.

HL93 LOADING



**75' C-I-P CONTINUOUS SLAB UNIT**  
**(25'-25'-25')**  
**24 FT ROADWAY**

**CS-75-24**

FILE: scs21ste-21.dgn	DN: LMO	CK: BMP	DW: LJC	CK: TAR
©TxDOT July 2021	CONT	SECT	JOB	HIGHWAY
REVISIONS				
DIST	COUNTY		SHEET NO.	