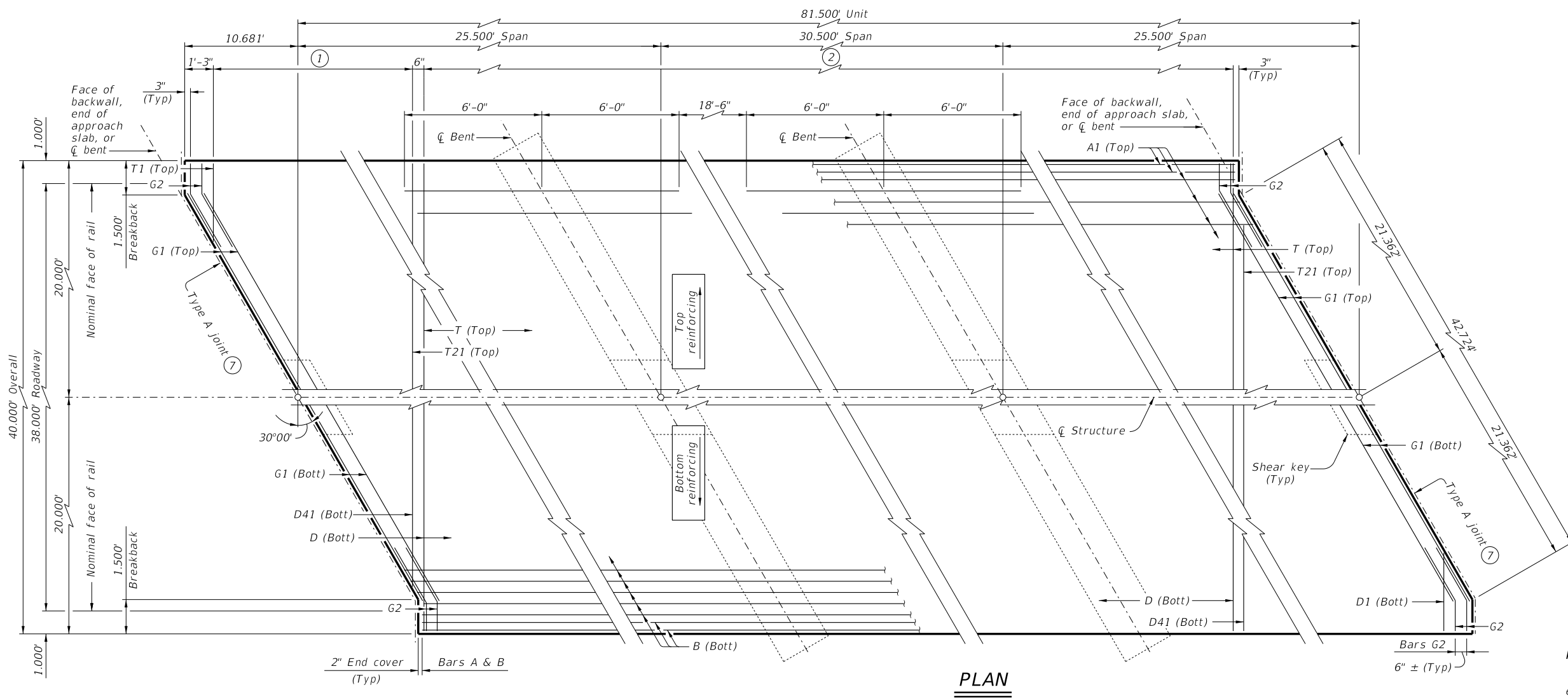


DISCLAIMER: This standard is governed by the "Texas Engineering Practice Act". No warranty of any kind is made by TxDOT for any purpose whatsoever. TxDOT assumes no responsibility for the conversion of this standard to other formats or for incorrect results or damages resulting from its use.

DATE: FILE:



**PLAN**

**TABLE OF ESTIMATED QUANTITIES**  
CS-80-38 (30°)

Bar	No.	Size	Length	Weight	
A1 (5)	44	#8	85' - 4"	10,025	
A2	78	#8	12' - 0"	2,499	
B (6)	82	#8	85' - 8"	18,756	
D	121	#4	39' - 9"	3,213	
D1-41	82	#4	20' - 8" Av	1,132	
G1	8	#5	42' - 9"	357	
G2	16	#5	4' - 0"	67	
T	61	#4	39' - 9"	1,620	
T1-21	42	#4	20' - 8" Av	580	
Reinforcing Steel				Lb	38,249
Class "S" Concrete				CY	161.3

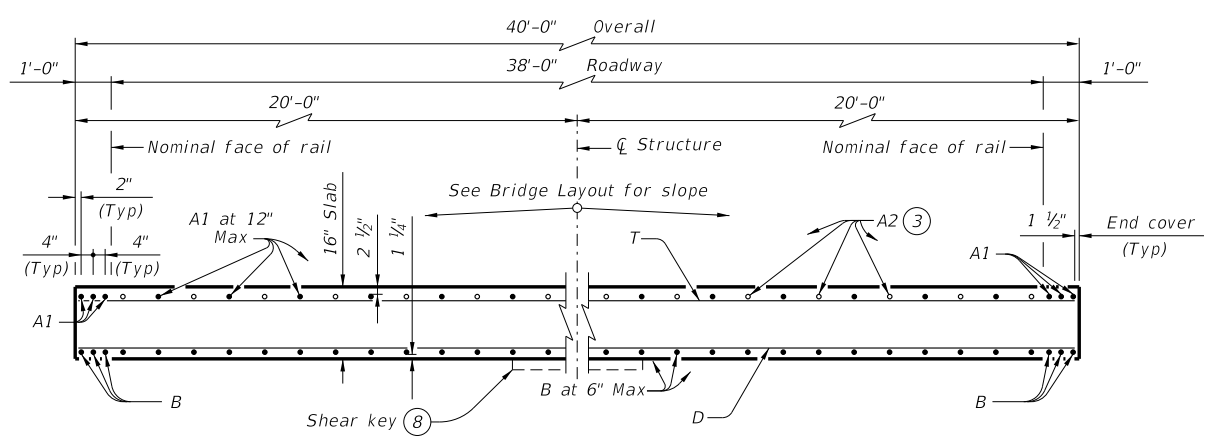
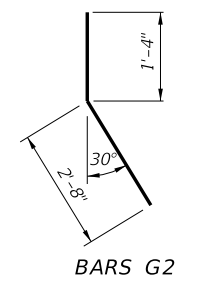
**TABLE OF LOAD RATING**

INV	OPR
1.47	1.90

**MATERIAL NOTES:**  
Provide Class S concrete ( $f'_c = 4,000$  psi).  
Provide Class S (HPC) concrete if shown elsewhere in the plans.  
Provide Grade 60 reinforcing steel.

**GENERAL NOTES:**  
Designed according to AASHTO LRFD Bridge Design Specifications.  
Load rated using Load and Resistance Factor Rating according to AASHTO Manual for Bridge Evaluation.  
Details shown are for right forward skew. See Bridge Layout for actual skew direction.  
See Miscellaneous Details for C-I-P Concrete Slab Spans (CS-MD) standard sheet for additional slab span details.  
Additional bar laps not permitted for Bars A1 and B.  
See applicable rail details for rail anchorage in slab.  
This standard does not support the use of transition bents.

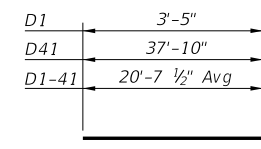
Cover dimensions are clear dimensions, unless noted otherwise. Reinforcing bar dimensions shown are out-to-out of bar.



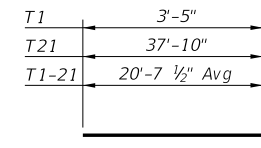
**TYPICAL TRANSVERSE SECTION**

(8) At abutments and bents only.

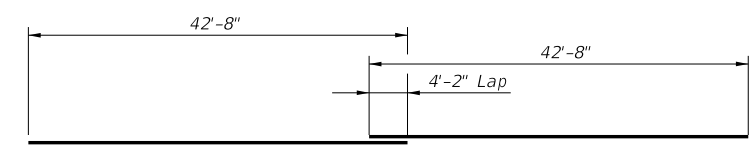
- ① Bars T1-21 (Top) at 12" Max spacing = 19'-10 1/2"  
Bars D1-41 (Bott) at 6" Max spacing = 19'-10 1/2"
- ② Bars T (Top) at 12" Max spacing  
Bars D (Bott) at 6" Max spacing
- ③ Place Bars A2 between Bars A1 over bent. (See PLAN for placement.)
- ④ Alternate splices over supports.
- ⑤ Length shown includes one 4'-2" lap splice.
- ⑥ Length shown includes one 4'-6" lap splice.
- ⑦ See standard CS-MD for expansion joint details.



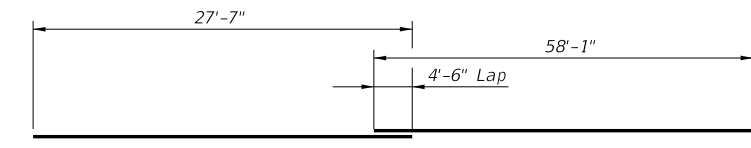
**BARS D**



**BARS T**



**BARS A1**



**BARS B (4)**

HL93 LOADING



**81.5' C-I-P CONTINUOUS SLAB UNIT**  
(25.5'-30.5'-25.5')  
38 FT ROADWAY 30° SKEW  
CS-80-38-30

FILE: scs47ste-21.dgn	DN: LMO	CK: BMP	DW: LJC	CK: TAR
©TxDOT July 2021	CONT	SECT	JOB	HIGHWAY
REVISIONS				
	DIST	COUNTY		SHEET NO.