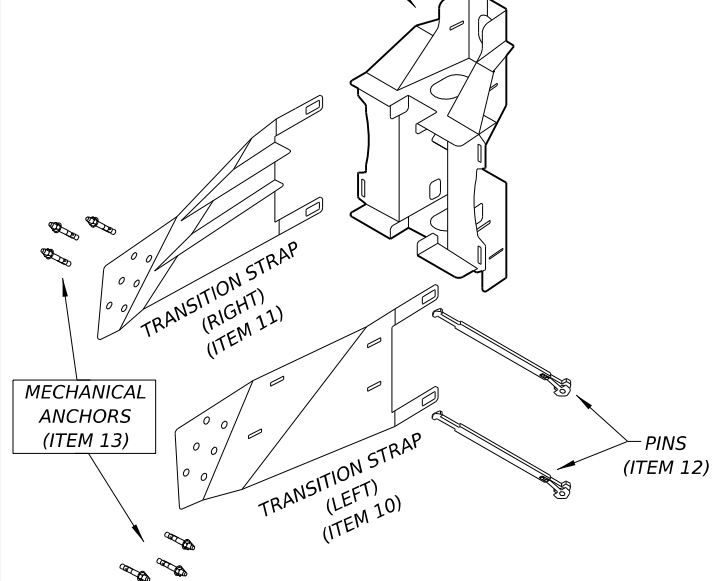
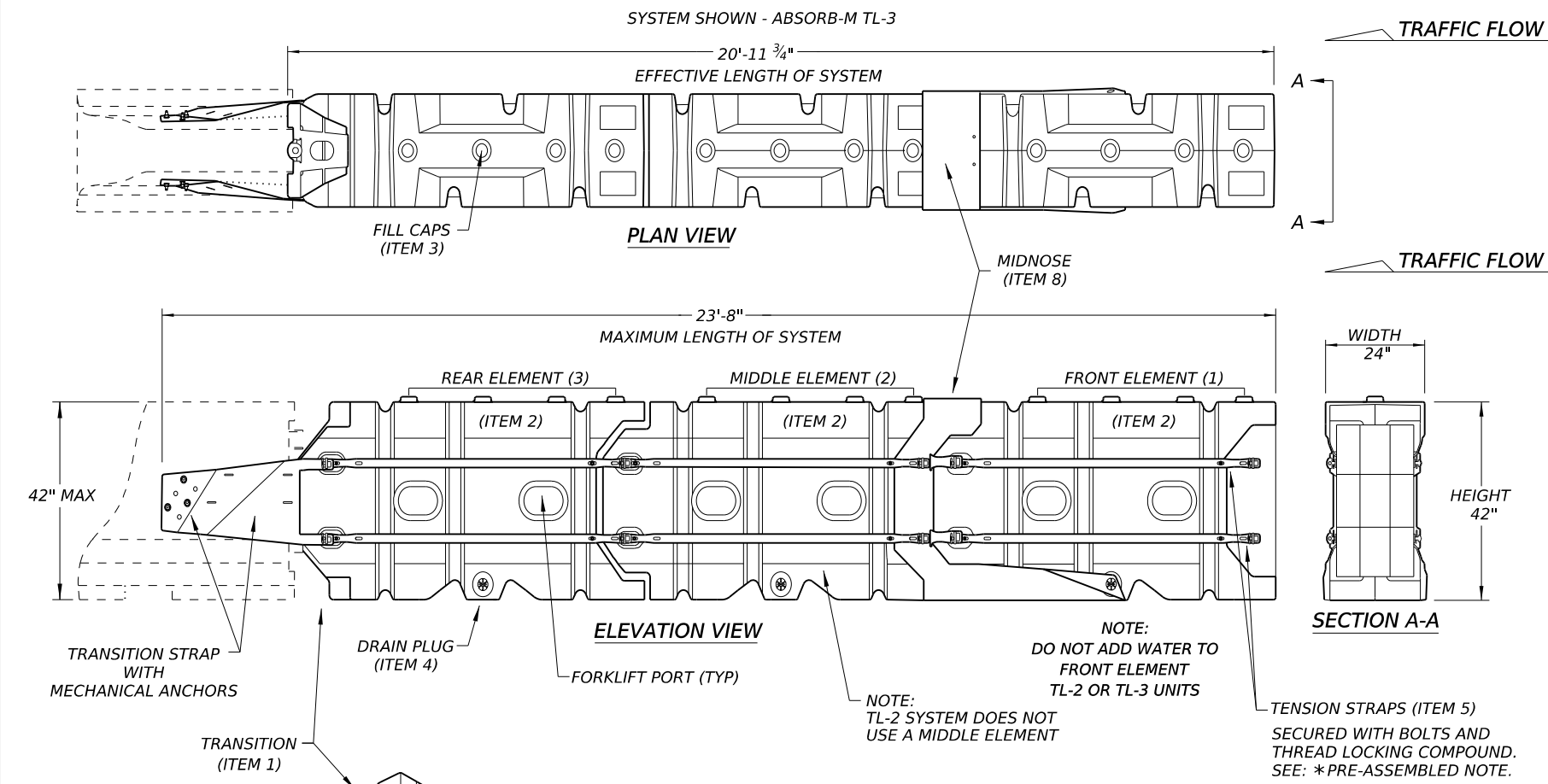


DISCLAIMER: THE USE OF THIS STANDARD IS GOVERNED BY THE "TEXAS ENGINEERING PRACTICE ACT". NO WARRANTY OF ANY KIND IS MADE BY TxDOT FOR ANY PURPOSE WHATSOEVER. TxDOT ASSUMES NO RESPONSIBILITY FOR THE CONVERSION OF THIS STANDARD TO OTHER FORMATS OR FOR INCORRECT RESULTS OR DAMAGES RESULTING FROM ITS USE.

DATE: FILE:

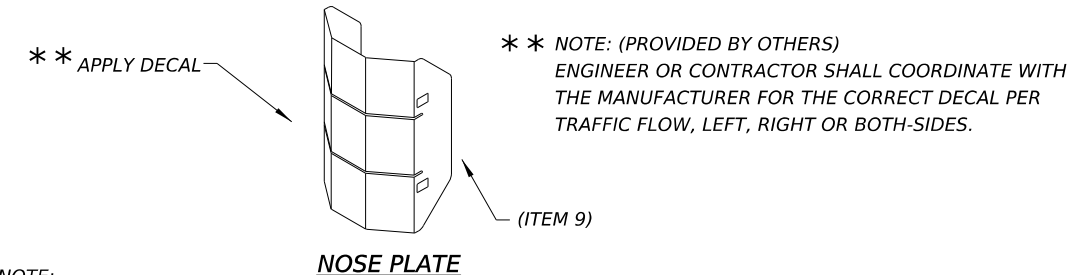


THE ABSORB-M IS A NON-REDIRECTIVE, GATING, CRASH CUSHION DESIGNED TO MEET THE LATEST TL-3 & TL-2 MASH REQUIREMENTS.

THE SYSTEM IS DESIGNED TO ACCOMMODATE A VARIETY OF F-SHAPE AND SINGLE SLOPE CONCRETE BARRIERS. CONTACT THE MANUFACTURER FOR GUIDANCE REGARDING OTHER ALLOWABLE SHAPES.

TEST LEVEL	NUMBER OF ELEMENTS	EFFECTIVE LENGTH	MAXIMUM LENGTH
TL-2	2	14'- 7 3/4"	17'- 4"
TL-3	3	20'- 11 3/4"	23'- 8"

NOTE: CROSS SLOPES OF UP TO 8% (OR 1:12 SLOPE) CAN BE ACCOMMODATED WITH STANDARD HARDWARE SHOWN WITHIN THE INSTRUCTIONS MANUAL. FOR SLOPES WITH EXCESS OF 8% (OR 1:12) CONTACT, LINDSAY TRANSPORTATION SOLUTIONS.

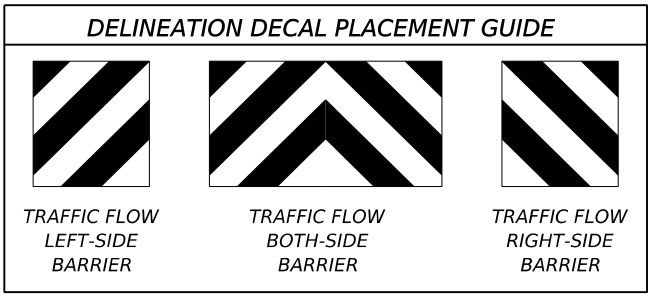


NOTE: APPLY A HIGH REFLECTIVE DECAL TO THE NOSE PLATE. DELINEATION DECAL ORIENTATION IS SHOWN ON THE CONSTRUCTION PLAN SET AND SHALL BE IN ACCORDANCE WITH THE TEXAS MUTCD FOR (TRAFFIC CONTROL DEVICES). DECALS ARE AVAILABLE FOR TRAFFIC FLOW ON THE LEFT-SIDE, BOTH -SIDES AND RIGHT-SIDE.

- GENERAL NOTES**
- FOR SPECIFIC INFORMATION REGARDING THE INSTALLATION AND TECHNICAL GUIDANCE, CONTACT: LINDSAY TRANSPORTATION SOLUTIONS (LTS) - BARRIER SYSTEMS, INC. AT (707) 374-6800. 180 RIVER ROAD, RIO VISTA, CA 94571
  - THE ABSORB-M SYSTEM IS ONLY APPROVED FOR USE IN (TEMPORARY WORK ZONE) LOCATIONS.
  - THE ABSORB-M IS A WATER FILLED NON-REDIRECTIVE, GATING CRASH CUSHION THAT DOES NOT NEED TO BE ATTACHED TO A FOUNDATION AND CAN BE INSTALLED ON TOP OF CONCRETE, ASPHALT, OR ANY SURFACE CAPABLE OF BEARING THE WEIGHT OF THE SYSTEM.
  - MAXIMUM PERMISSIBLE CROSS-SLOPE IS 8%.
  - THE INSTALLATION AREA SHOULD BE FREE FROM CURBS, ELEVATED OBJECTS, OR DEPRESSIONS.
  - THE ABSORB-M SHOULD BE LOCATED APPROXIMATELY PARALLEL WITH THE BARRIER.
  - THE USE OF THE ABSORB-M IS RESTRICTED TO A BARRIER HEIGHT OF UP TO 42 INCHES.
  - DO NOT ADD WATER TO FRONT ELEMENT (TL-2 OR TL-3 UNIT).

BILL OF MATERIALS (BOM) ABSORB-M TL-3 & TL-2 SYSTEMS			QTY	QTY
ITEM #	PART NUMBER	PART DESCRIPTION	TL-2 SYSTEM	TL-3 SYSTEM
1	BSI-1809036-00	TRANSITION-(GALV)	1	1
2	BSI-1808002-00	PRE-ASSEMBLED ABSORBING (ELEMENTS)	2	3
3	BSI-4004598	FILL CAPS	8	12
4	BSI-4004599	DRAIN PLUGS	2	3
5	BSI-1809053-00	TENSION STRAP-(GALV)	8	12
6	BSI-2001998	C-SCR FH 3/8-16 X 1 1/2 GR5 PLT	8	12
7	BSI-2001999	C-SCR FH 3/8-16 X 1 GR5 PLT	8	12
8	BSI-1809035-00	MIDNOSE-(GALV)	1	1
9	BSI-1808014-00	NOSE PLATE	1	1
10	BSI-1809037-00	TRANSITION STRAP (LEFT-HAND)-(GALV)	1	1
11	BSI-1809038-00	TRANSITION STRAP (RIGHT-HAND)-(GALV)	1	1
12	BSI-1808005-00	PIN ASSEMBLY	8	10
13	BSI-2002001	ANC MECH 5/8-11X5 (GALV)	6	6
14	ABSORB-M	INSTALLATION AND INSTRUCTIONS MANUAL	1	1

\* COMPONENTS PRE-ASSEMBLED WITH ELEMENT ASSEMBLY



SACRIFICIAL

NOTE: THIS STANDARD IS A BASIC REPRESENTATION OF THE ABSORB-M, IT IS NOT INTENDED TO REPLACE THE INSTALLATION INSTRUCTIONS MANUAL.

		<b>Design Division Standard</b>	
<b>LINDSAY TRANSPORTATION SOLUTIONS</b> <b>CRASH CUSHION</b> <b>(MASH TL-3 &amp; TL-2)</b> <b>TEMPORARY - WORK ZONE</b> <b>ABSORB (M) - 19</b>			
FILE: absorbm19	DN: TxDOT	CK: KM	DW: VP
© TxDOT: JULY 2019	CONT	SECT	JOB
REVISIONS			HIGHWAY
	DIST	COUNTY	SHEET NO.