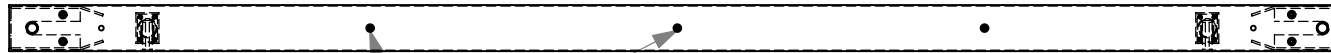
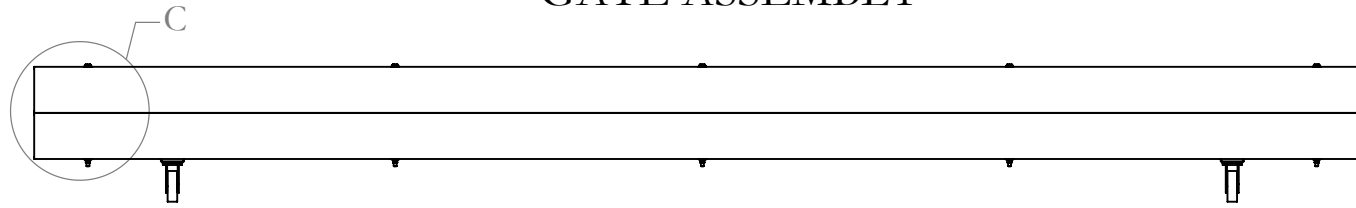
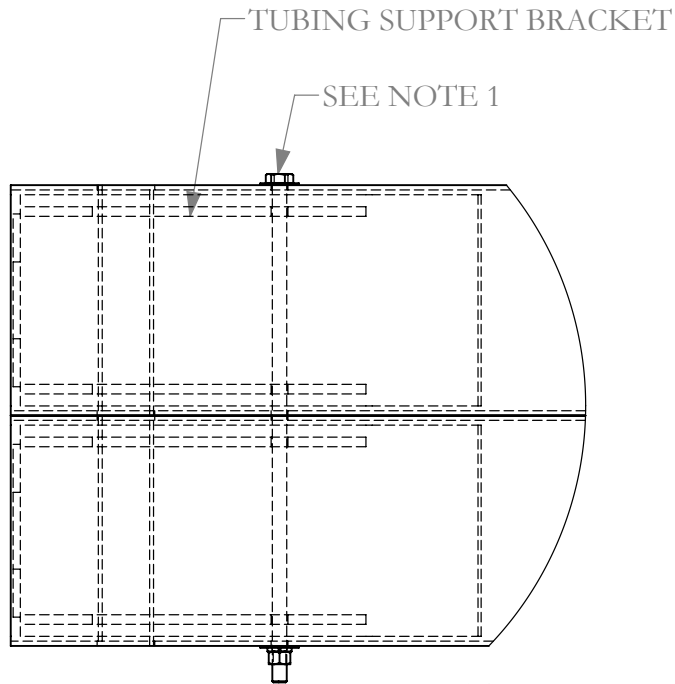


GATE ASSEMBLY



SEE NOTE 1

SEE NOTE 1



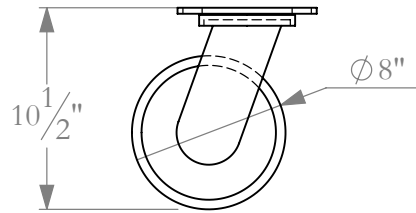
1. 3/4" -10 x 26" hex head bolt, A325 or grade 5, 2 flat washers, lock washer, and hex nut. 7 needed per installation. Bolts attach Tubes together and hold Support Brackets in Tubes.
2. Pry-bar not shown in this view.

TxDOT (Fabrication Details)

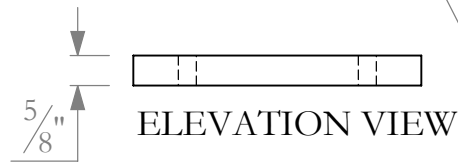
Date	Drawn By	Scale	Sheet No.
2011-02-28	GES	1:50	1 of 9

Sheet Name
Gate Assembly

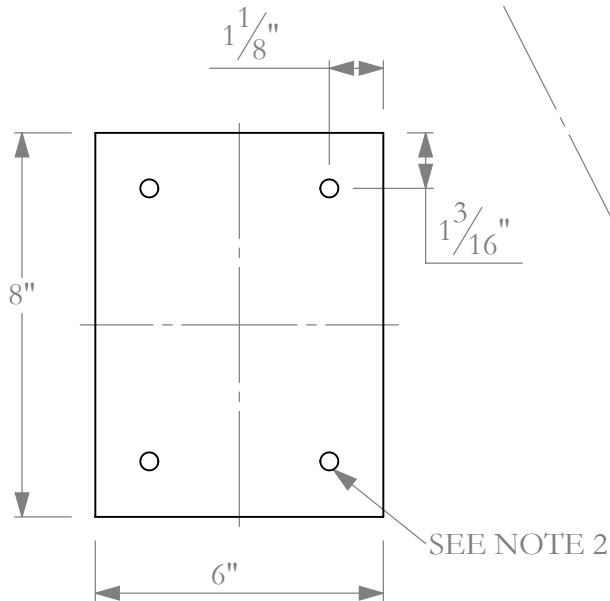
Barrier Gate



SWIVEL CASTER
SEE NOTE 1



ELEVATION VIEW

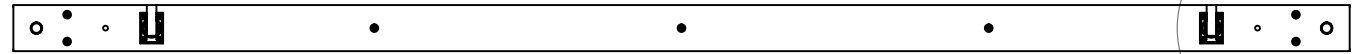


PLAN VIEW

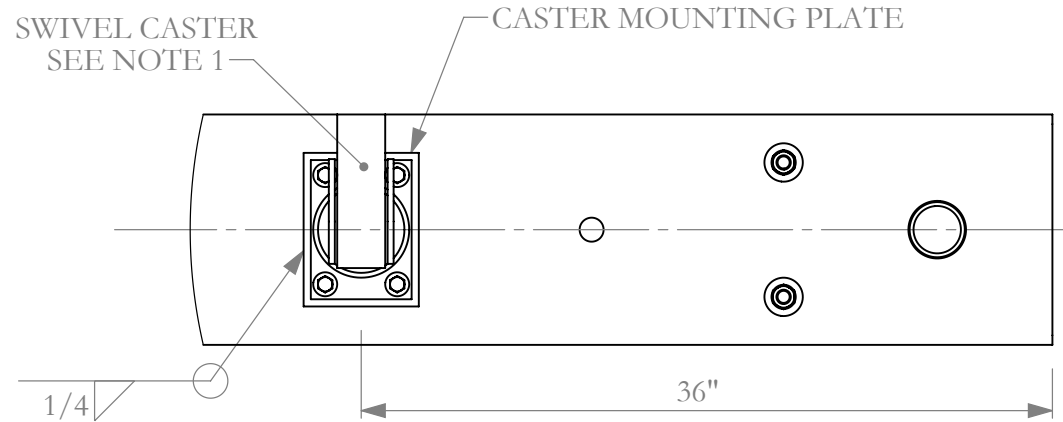
CASTER MOUNTING PLATE

A36 - SCALE 1:4
SYMMETRICAL ABOUT ϕ 'S

GATE ASSEMBLY



BOTTOM VIEW



DETAIL D
SCALE 1 : 10
TYPICAL EACH END

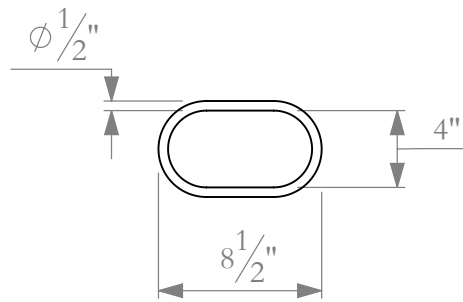
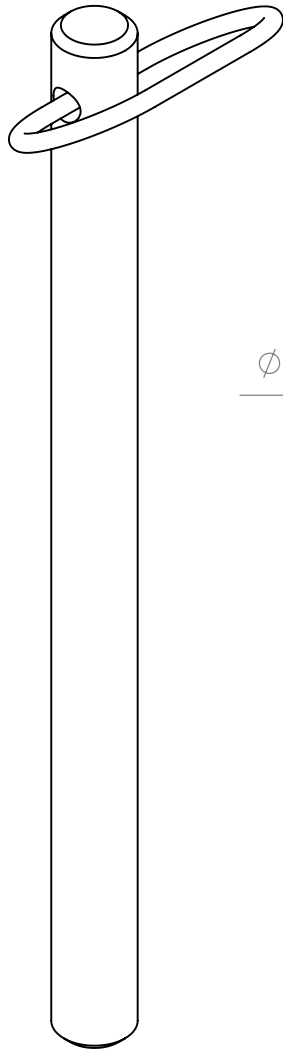
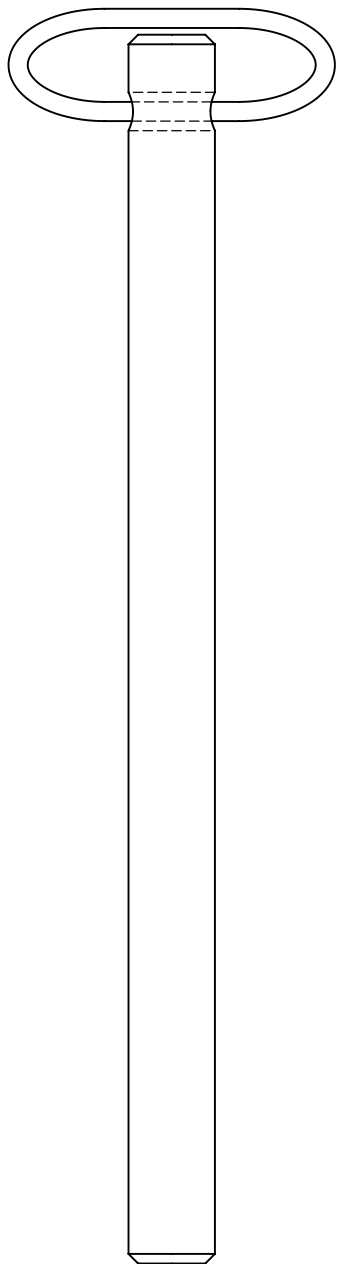
1. Grainger Item # 1NVZ9 - 2 needed per installation. Attaches to Caster Mounting Plate with (4) 1/2" -13 x 1" hex head bolt and flat washers (A325 or gr. 5).
2. Drill and tap 4 holes for 1/2" -13 bolts. Plug holes prior to galvanizing or drill holes through tubing to prevent galvanizing build up in holes.
3. Pry-bar not shown in this view.

TxDOT (Fabrication Details)

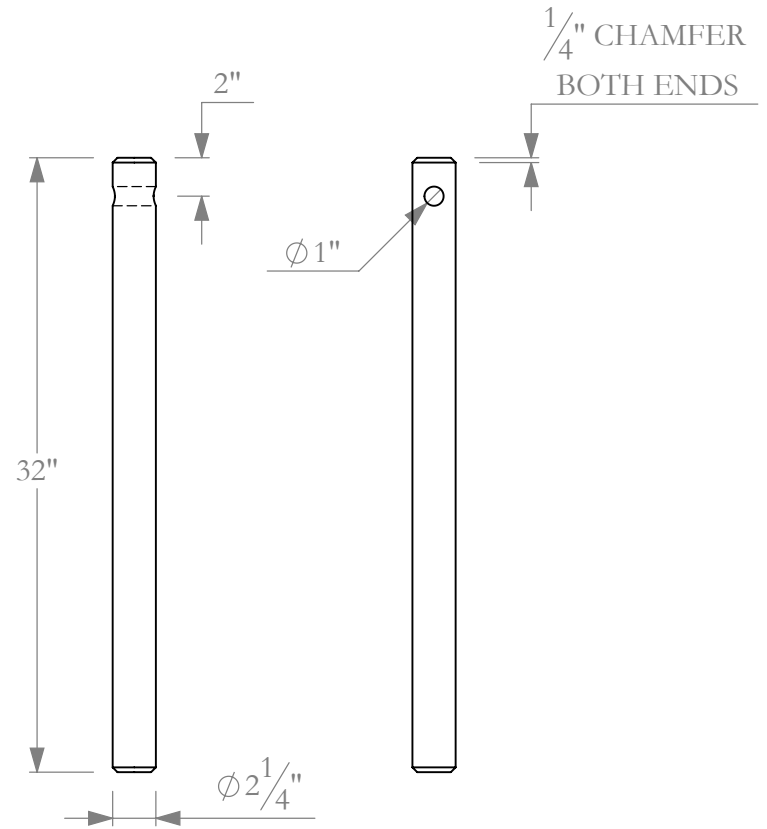
Date	Drawn By	Scale	Sheet No.
2011-02-28	GES	1:50	2 of 9

Sheet Name
Caster Details

Barrier Gate



HANDLE
A36

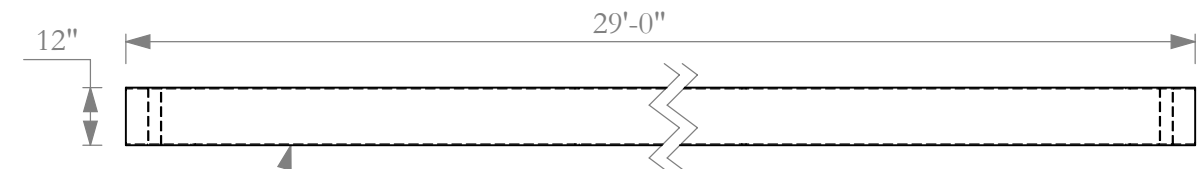


PIN
A36 HOT ROLLED

PIN ASSEMBLY
2 NEEDED PER INSTALLATION

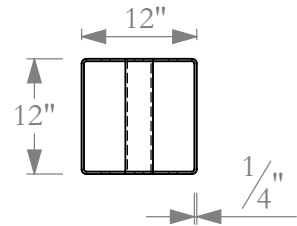
TxDOT (Fabrication Details)

Date	Drawn By	Scale	Sheet No.
2011-02-28	GES	1:5	3 of 9
Sheet Name			
Pin			
Barrier Gate			

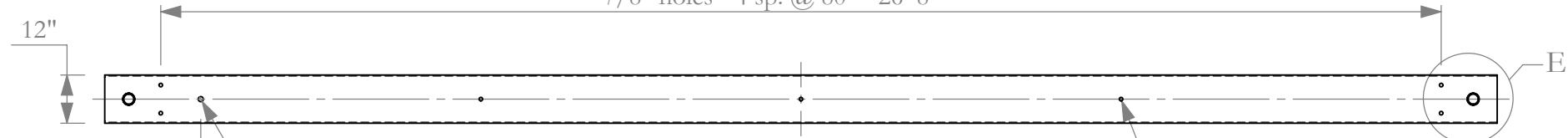


HSS 12 x 12 x 1/4
A500 Gr. B

TUBING WITH SLEEVE
ELEVATION VIEWS
END VIEW SCALE 1:20



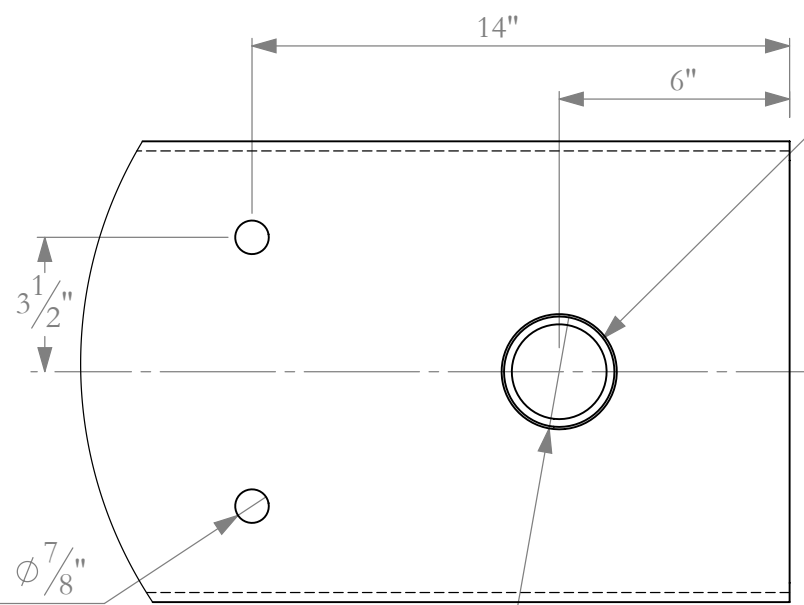
7/8" holes - 4 sp. @ 80" - 26'-8"



$\phi 1\frac{1}{4}$ "
HOLE FOR PRYBAR

TUBING WITH SLEEVE
PLAN VIEW

$\phi \frac{7}{8}$ " TYP. x 7



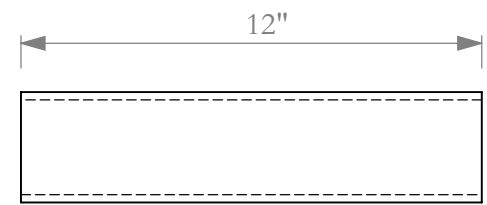
$\phi 3$ " HOLE FOR PIPE SLEEVE

DETAIL E
SCALE 1 : 5

TYPICAL
TOP AND
BOTTOM

$\phi 2.8750$

$\phi 2.4690$

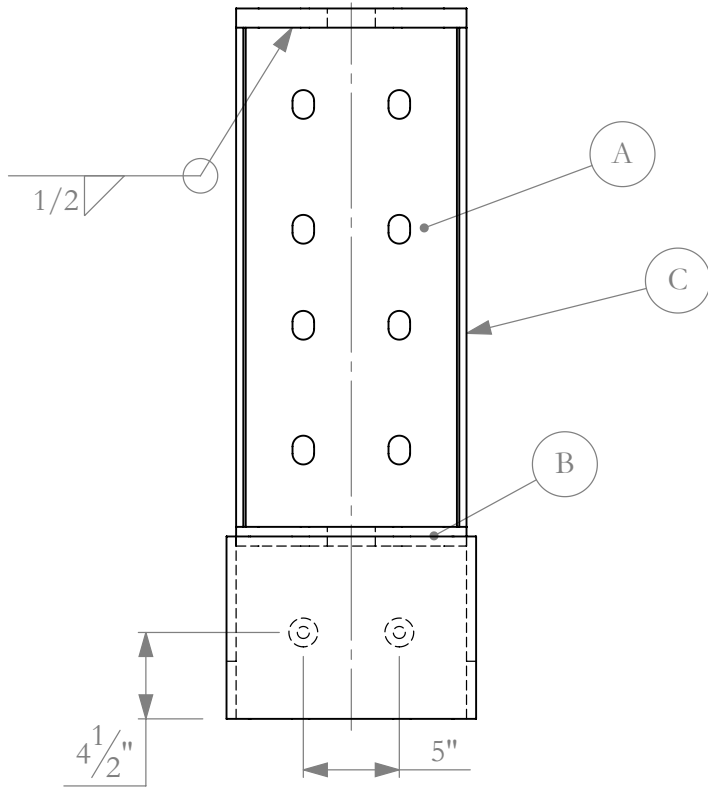


SLEEVE
2-1/2" Sch. 40
SCALE 1:5

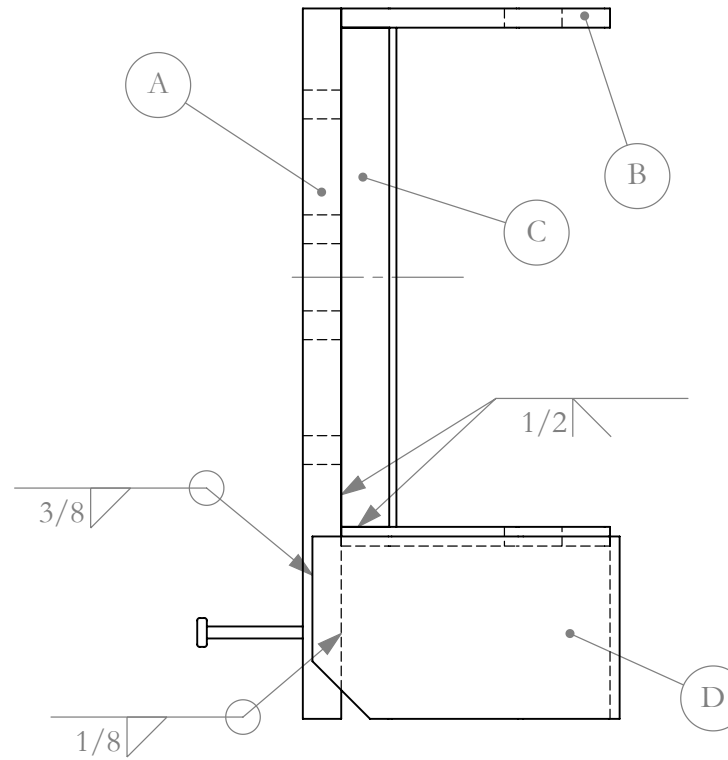
1. Part is symmetrical about ϕ .
2. Two needed per installation.
3. Drill holes 24" from each end for pry bar storage.

TxDOT (Fabrication Details)			
Date	Drawn By	Scale	Sheet No.
2011-02-28	GES	1:40	4 of 9
Sheet Name			
Tubing with Sleeve			
Barrier Gate			

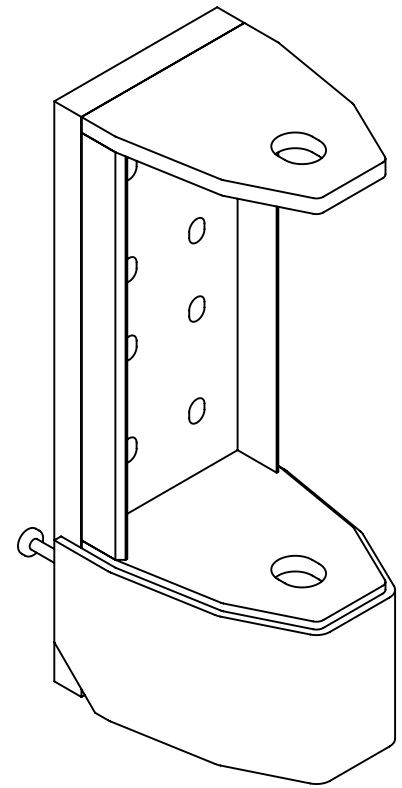
MOUNTING BRACKET



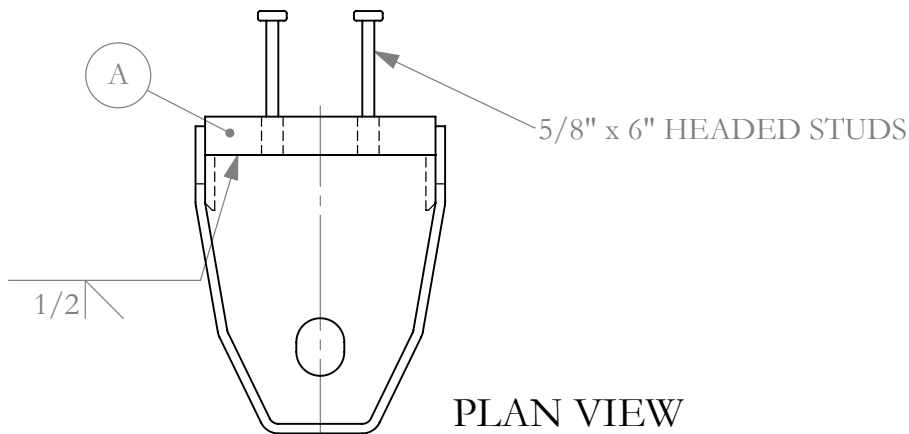
ELEVATION VIEW
END



ELEVATION VIEW
FRONT



ISOMETRIC VIEW



PLAN VIEW

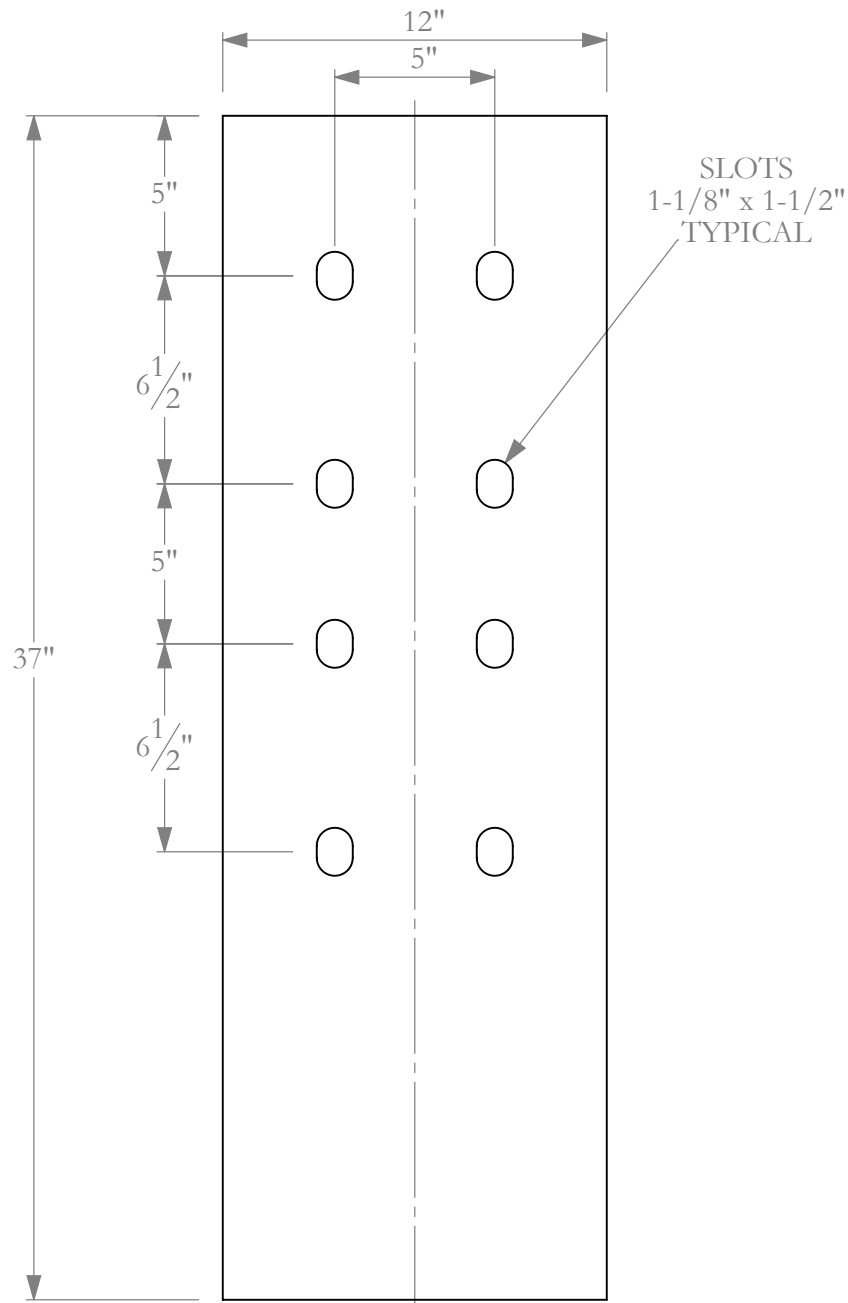
1. Part is symmetrical about CL 's.
2. Two needed per installation.

TxDOT (Fabrication Details)

Date	Drawn By	Scale	Sheet No.
2011-02-28	GES	1:10	5 of 9

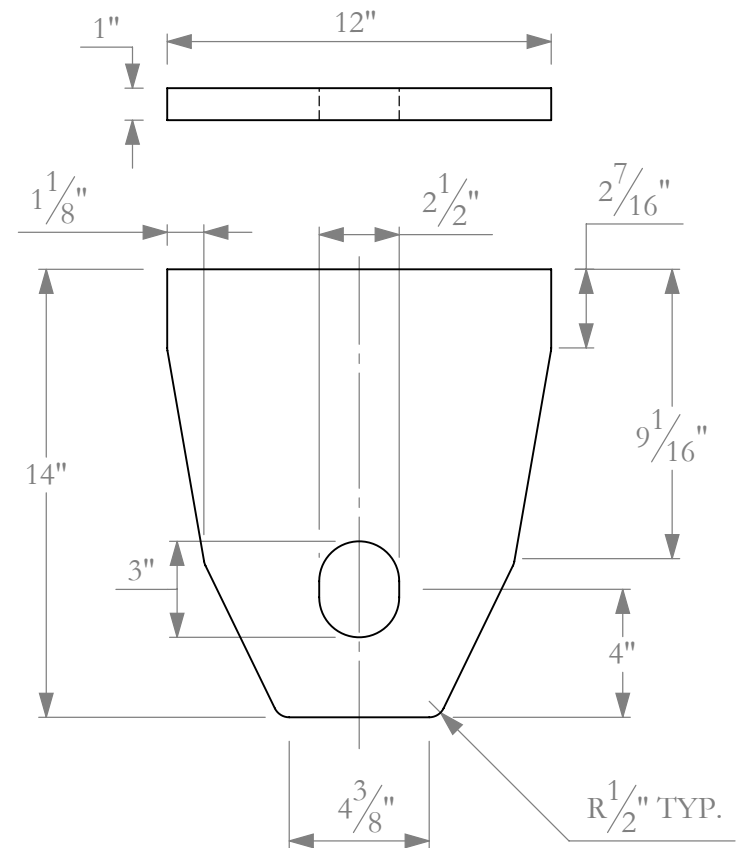
Sheet Name
Mounting Bracket

Barrier Gate



(A)

BACK PLATE
2" THICK
1 NEEDED PER BRACKET



(B)

HORIZONTAL PLATE
2 NEEDED PER BRACKET

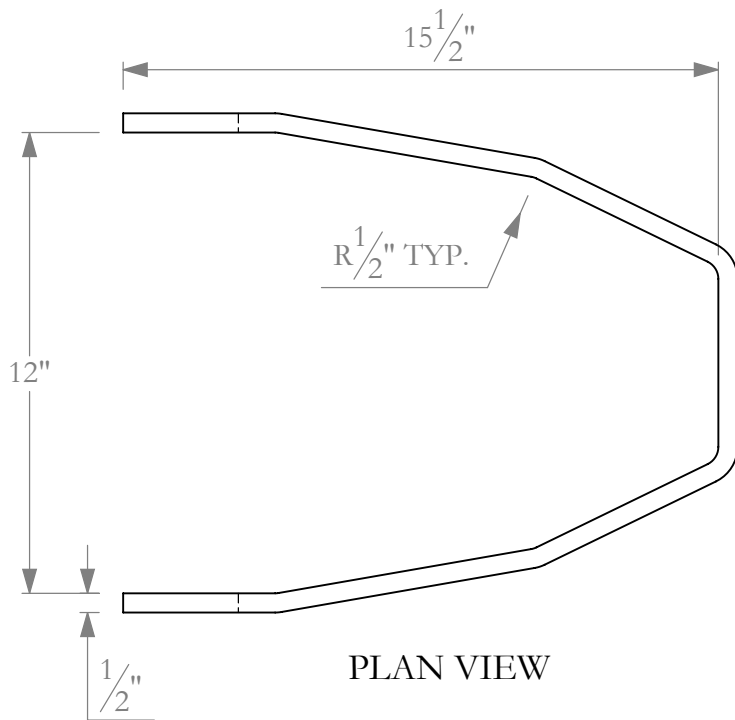
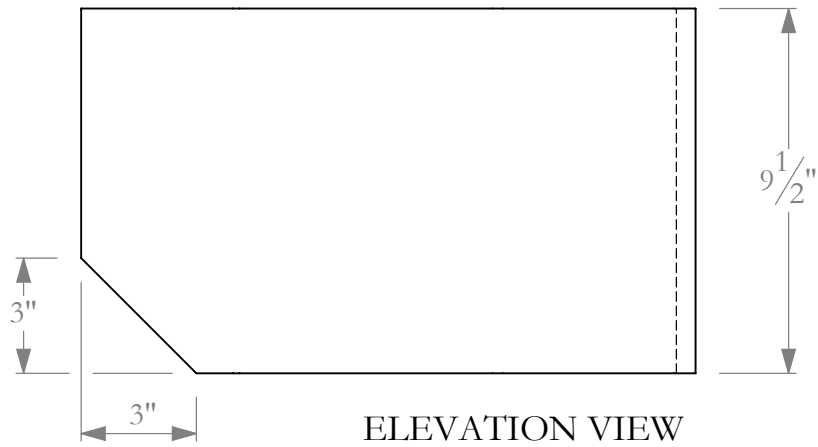
1. All parts are A36 steel.
2. Parts A and B are symmetrical about CL 's.

TxDOT (Fabrication Details)

Date	Drawn By	Scale	Sheet No.
2011-02-28	GES	1:6	6 of 9

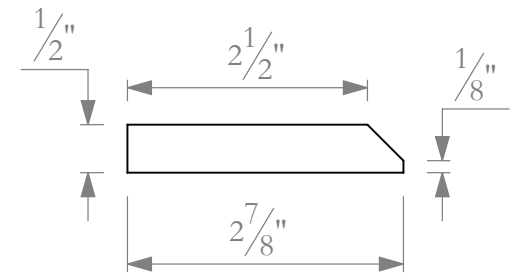
Sheet Name
Mounting Bracket Parts - 1

Barrier Gate



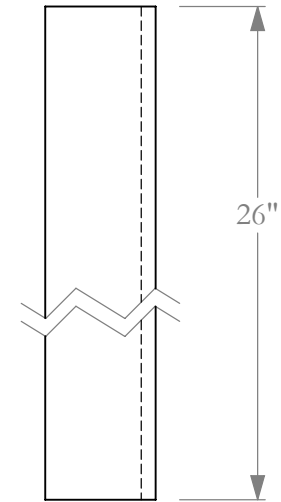
(D) TOE PLATE
SEE NOTE 2

1. All parts are A36 steel.
2. Bend to fit Horizontal Plate (B). Toe Plate may be made from multiple pieces. If so, weld pieces together with full penetration bevel welds.



(C)

VERTICAL PLATE
2 NEEDED PER BRACKET
END VIEW SCALE 1:2



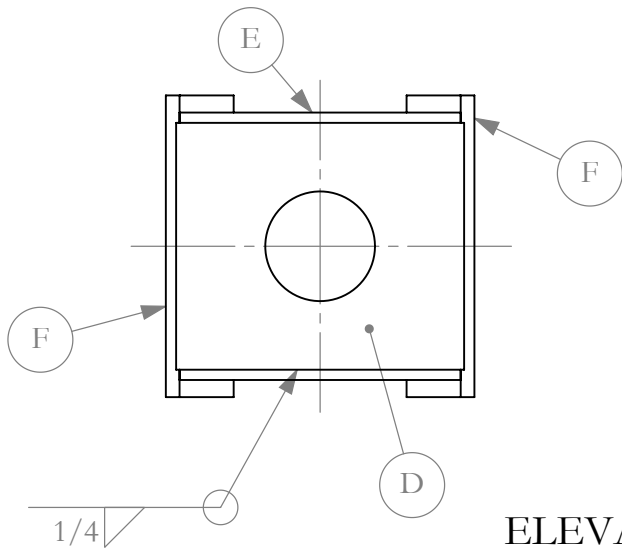
TxDOT (Fabrication Details)

Date	Drawn By	Scale	Sheet No.
2011-02-28	GES	1:5	7 of 9

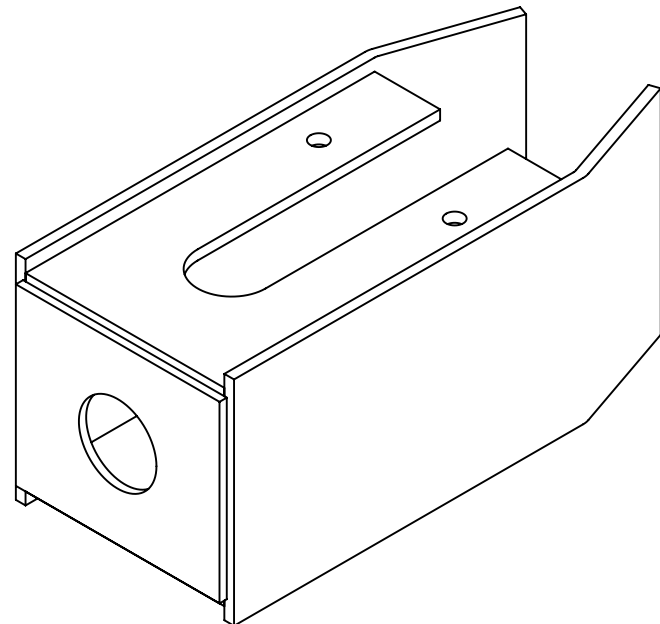
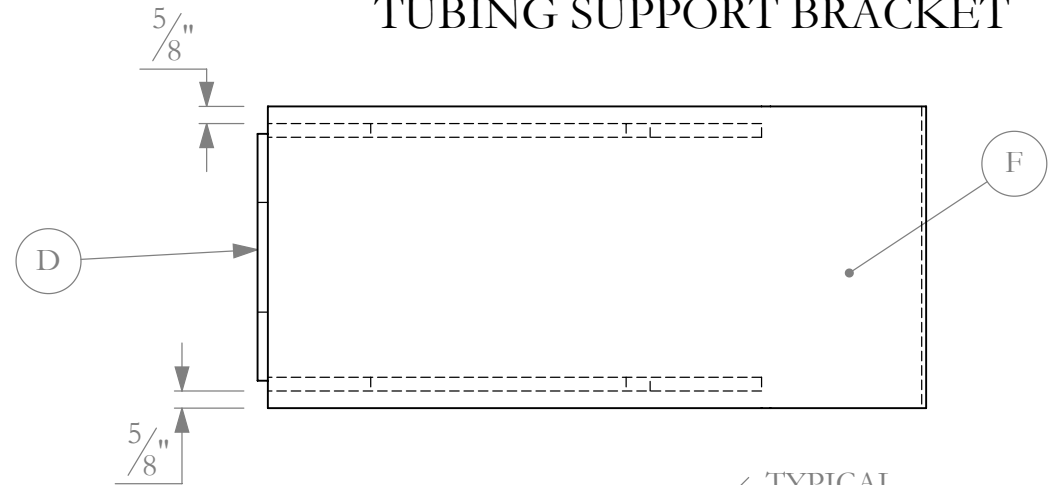
Sheet Name
Mounting Bracket Parts - 2

Barrier Gate

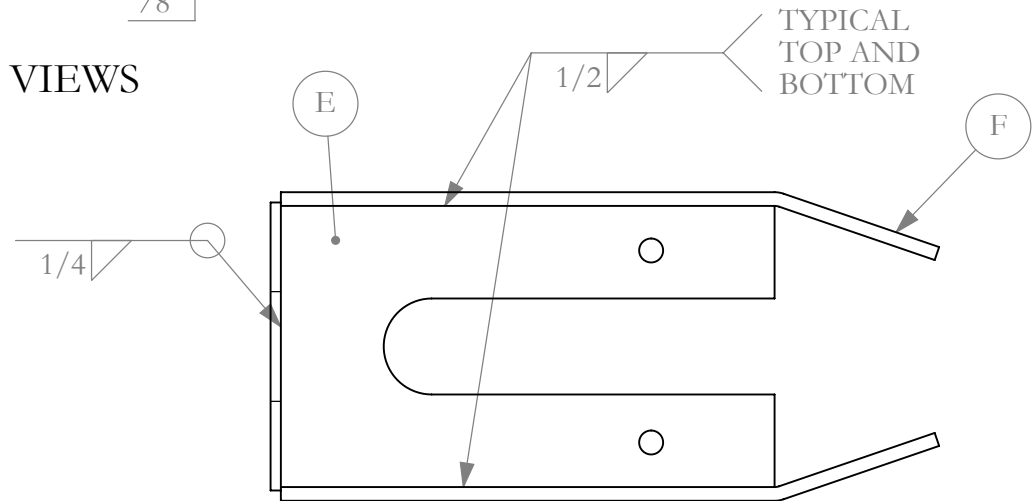
TUBING SUPPORT BRACKET



ELEVATION VIEWS



ISOMETRIC VIEW



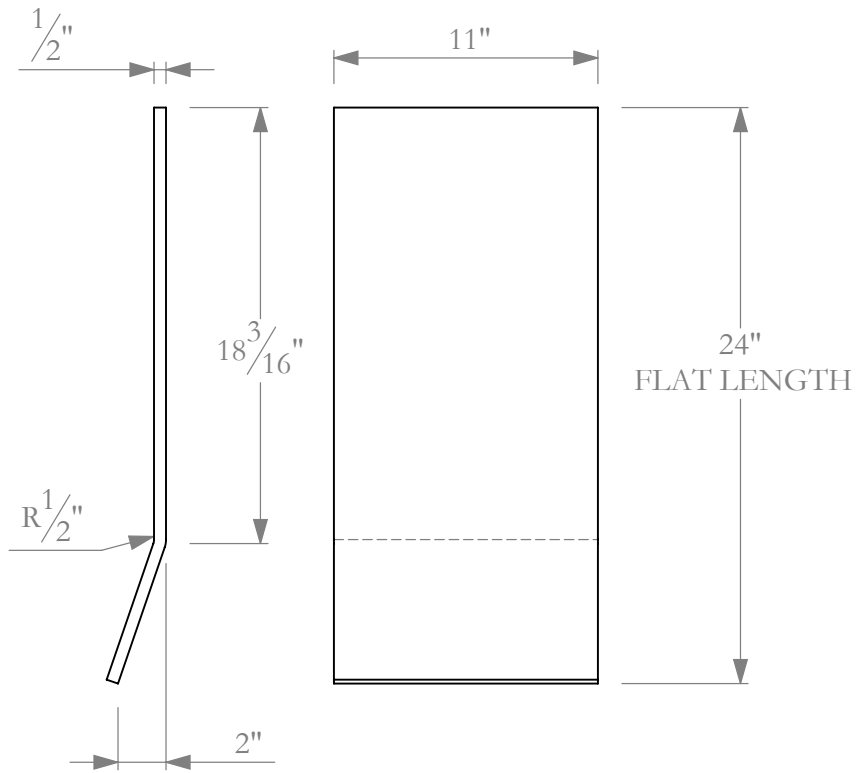
PLAN VIEW

TxDOT (Fabrication Details)

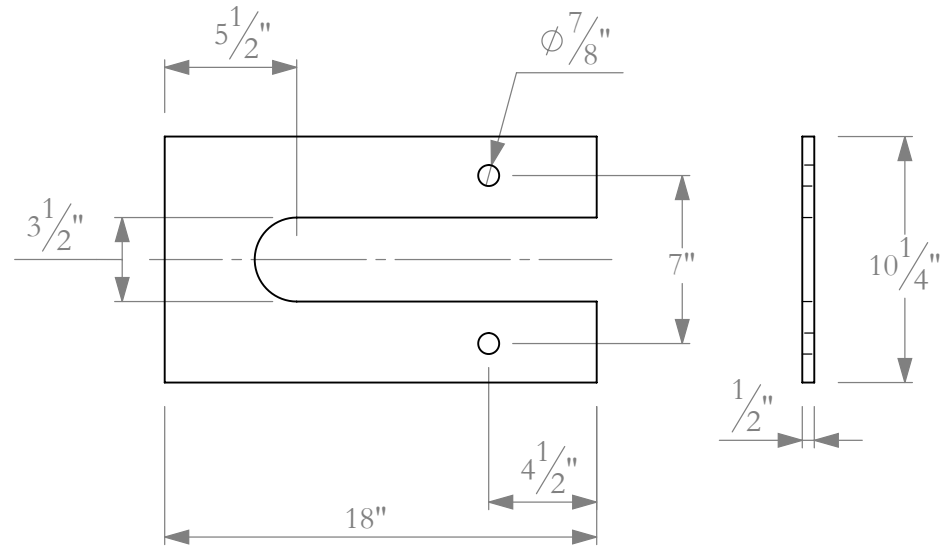
Date	Drawn By	Scale	Sheet No.
2011-02-28	GES	1:7	8 of 9

Sheet Name
Tubing Support Bracket

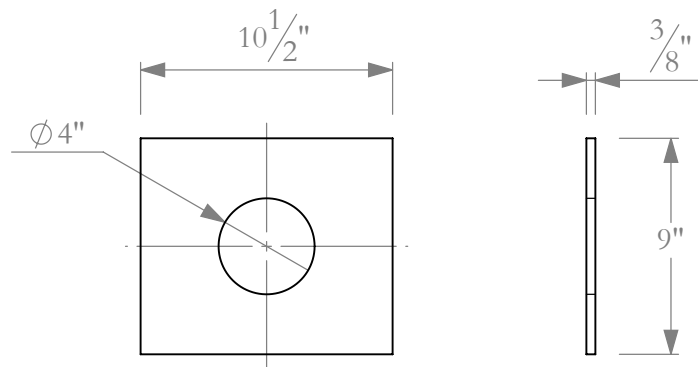
Barrier Gate



(F) SIDE PLATE
2 NEEDED PER BRACKET



(E) HORIZONTAL PLATE
2 NEEDED PER BRACKET
SYMMETRICAL ABOUT ϕ 'S



(D) END PLATE
1 NEEDED PER BRACKET

1. All parts are A36 steel.

TxDOT (Fabrication Details)			
Date	Drawn By	Scale	Sheet No.
2011-02-28	GES	1:8	9 of 9
Sheet Name Support Bracket Parts			
Barrier Gate			