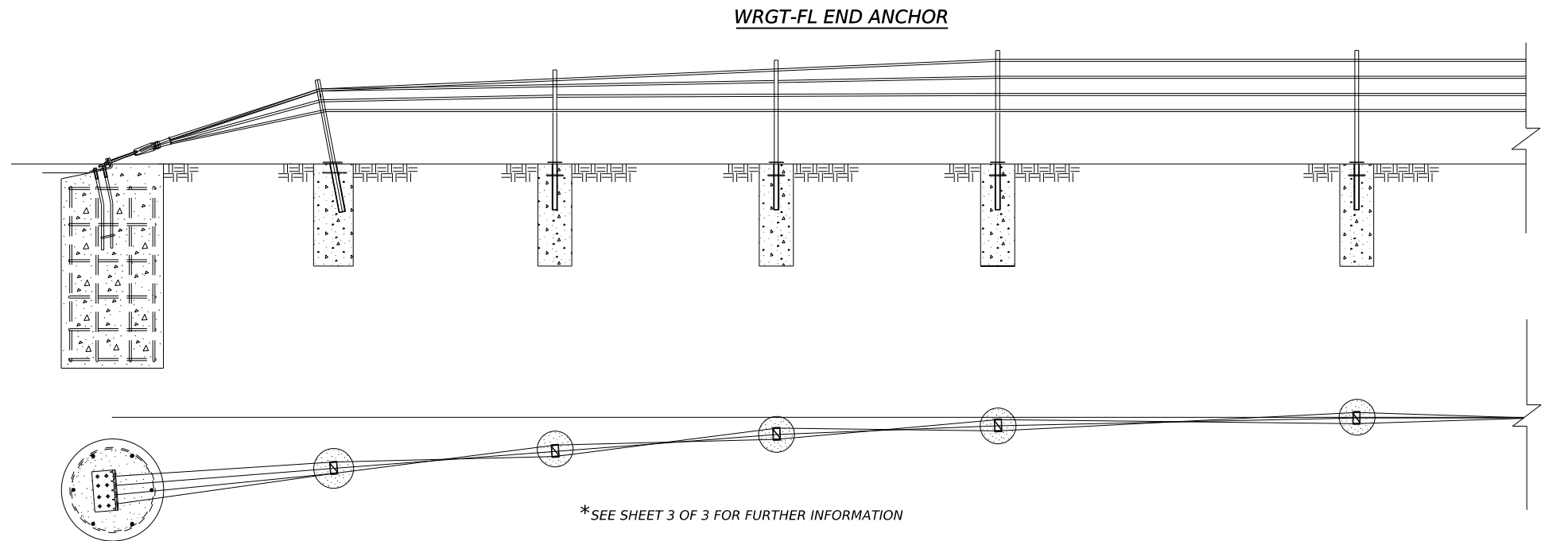
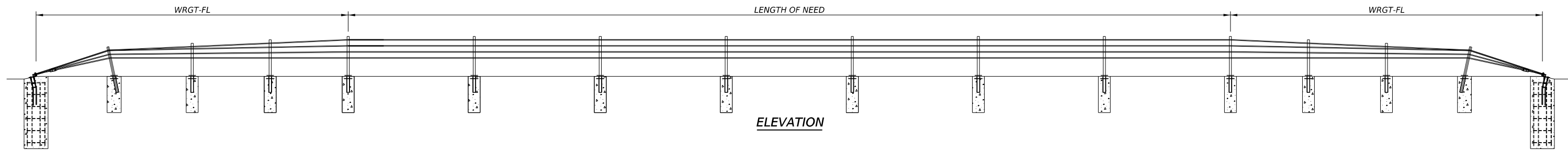


DISCLAIMER: The use of this standard is governed by the "Texas Engineering Practice Act". No warranty of any kind is made by TxDOT for any purpose whatsoever. TxDOT assumes no responsibility for the conversion of this standard to other formats or for incorrect results or damages resulting from its use.



ROPE TENSION TABLE		
ROPE TEMP (°F)	TENSION (LBS)	TENSION (kN)
0	5700	25.4
5	5550	24.7
10	5400	24.0
15	5250	23.4
20	5100	22.7
25	4950	22.0
30	4800	21.4
35	4650	20.74
40	4500	20.0
45	4350	19.3
50	4200	18.7
55	4050	18.0
60	3900	17.3
65	3750	16.7
70	3600	16.0
75	3450	15.3
80	3300	14.7
85	3150	14.0
90	3000	13.3
95	2850	12.7
100	2700	12.0
105	2550	11.3
110	2400	10.7
115	2250	10.0
120	2100	9.3
125	1950	8.7
130	1800	8.0
135	1650	7.3
140	1500	6.7

**GENERAL NOTES:**

- BRIFEN DRAWINGS, SPECIFICATIONS, AND PRODUCT MANUAL SHOULD BE REVIEWED PRIOR TO STARTING AN INSTALLATION. FOR ADDITIONAL INFORMATION OR QUESTIONS, CONTACT BRIFEN USA, INC. AT 1-866-427-4336.
- THE BRIFEN WRSF HAS BEEN SUCCESSFULLY TESTED TO NCHRP 350 TL-4 CONDITIONS ON SLOPES 6:1 OR FLATTER AND NCHRP 350 TL-3 CONDITIONS ON SLOPES 4:1 TO 6:1.
- THE POST SPACING SHALL BE DETERMINED BY THE SPECIFYING AGENCY. POST SPACING MAY BE DECREASED TO AVOID OBSTRUCTIONS OR UTILITIES. IN NO EVENT SHALL THE POST SPACING EXCEED 21'-0".
- BRIFEN WRSF SHALL BE PLACED ON A SMOOTH SURFACE, WITHOUT HUMPS, DROP-OFFS, HOLES, ETC THAT WOULD INTERFERE WITH THE STABILITY OF THE ERRANT VEHICLE. GRADING, FILL AND COMPACT MAY BE REQUIRED TO ASSURE THAT ROPES ARE INSTALLED AT THE DESIGN HEIGHT.
- THE WRGT-FL END ANCHOR HAS BEEN SUCCESSFULLY TESTED TO NCHRP 350 TL-3 CONDITIONS. THE LENGTH OF NEED BEGINS 31'-0" FROM THE END ANCHOR. POSTS A THROUGH POST B3, SPACED 6'-6" APART, HAVE WEAKENED CUTS AT THE GROUND THAT SHALL FACE THE ANCHOR.
- ANCHOR AND LINE POST DIMENSIONS AND STEEL REINFORCEMENT WILL BE DETERMINED ON PROJECT SPECIFIC SOIL CLASSIFICATION, PROPERTIES AND TEMPERATURE EXTREMES. CONTACT BRIFEN USA, INC. FOR ADDITIONAL INFORMATION.
- ALL REINFORCEMENT AND CONCRETE FOR THE ANCHORS AND LINE POSTS PROVIDED BY OTHERS.
- REINFORCEMENT AND CONCRETE PROPERTIES SHALL MEET AGENCY SPECIFICATIONS.
- FOR PLACEMENT NEAR GUARDRAIL OR OTHER OBSTACLES CONTACT BRIFEN USA, INC. FOR ADDITIONAL DRAWINGS AND SUPPORT.
- TAPER RATES FOR THE BRIFEN WRSF ARE AS FOLLOWS:  
HORIZONTAL: 25:1 MAXIMUM, 50:1 PREFERABLE  
VERTICAL: 25:1 MAXIMUM, 50:1 PREFERABLE

\* ROPE TENSION: ± 20% AFTER 2-WEEK INTERVAL

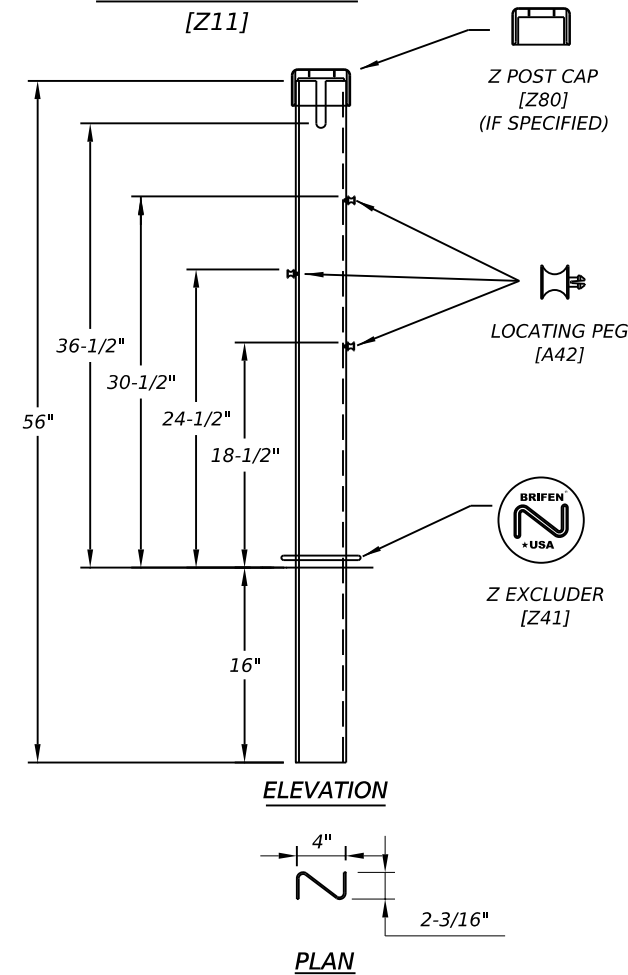
DATE:  
FILE:

SHEET 1 OF 3

		<b>Design Division Standard</b>	
<b>BRIFEN WIRE ROPE SAFETY FENCE (TL-4)</b>			
<b>BRIFEN(TL4) - 14</b>			
FILE: brifent1414.dgn	DN: TxDOT	CK: RM	DW: VP
© TxDOT: MARCH 2014	CONT	SECT	JOB
REVISIONS		HIGHWAY	
DIST	COUNTY		SHEET NO.

DISCLAIMER: The use of this standard is governed by the "Texas Engineering Practice Act". No warranty of any kind is made by TxDOT for any purpose whatsoever. TxDOT assumes no responsibility for the conversion of this standard to other formats or for incorrect results or damages resulting from its use.

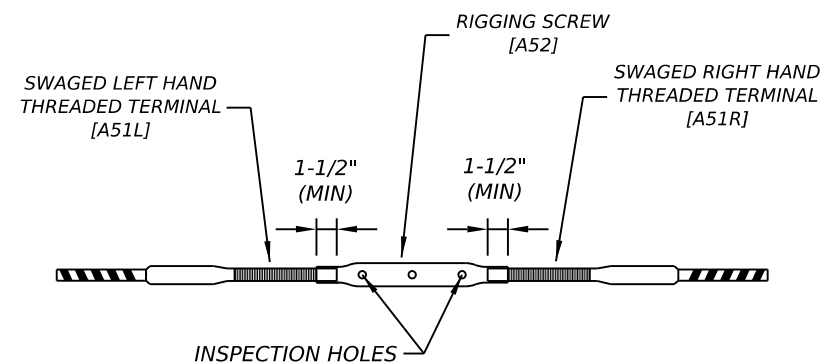
**LINE POST ASSEMBLY**  
[Z11]



**NOTES SPECIFIC TO LINE POST ASSEMBLY**

1. ROPE HEIGHTS SHALL BE  $\pm 1"$  TO GROUND LINE.
2. POST SHALL BE  $\pm 4"$  FROM VERTICAL PLUMB.
3. POST CAPS SHALL BE USED IF SPECIFIED.
4. REFLECTORS SHALL BE SPACED ACCORDING TO AGENCY SPECIFICATIONS.
5. REFLECTORS CAN BE PLACED ON THE POST CAP OR POST.

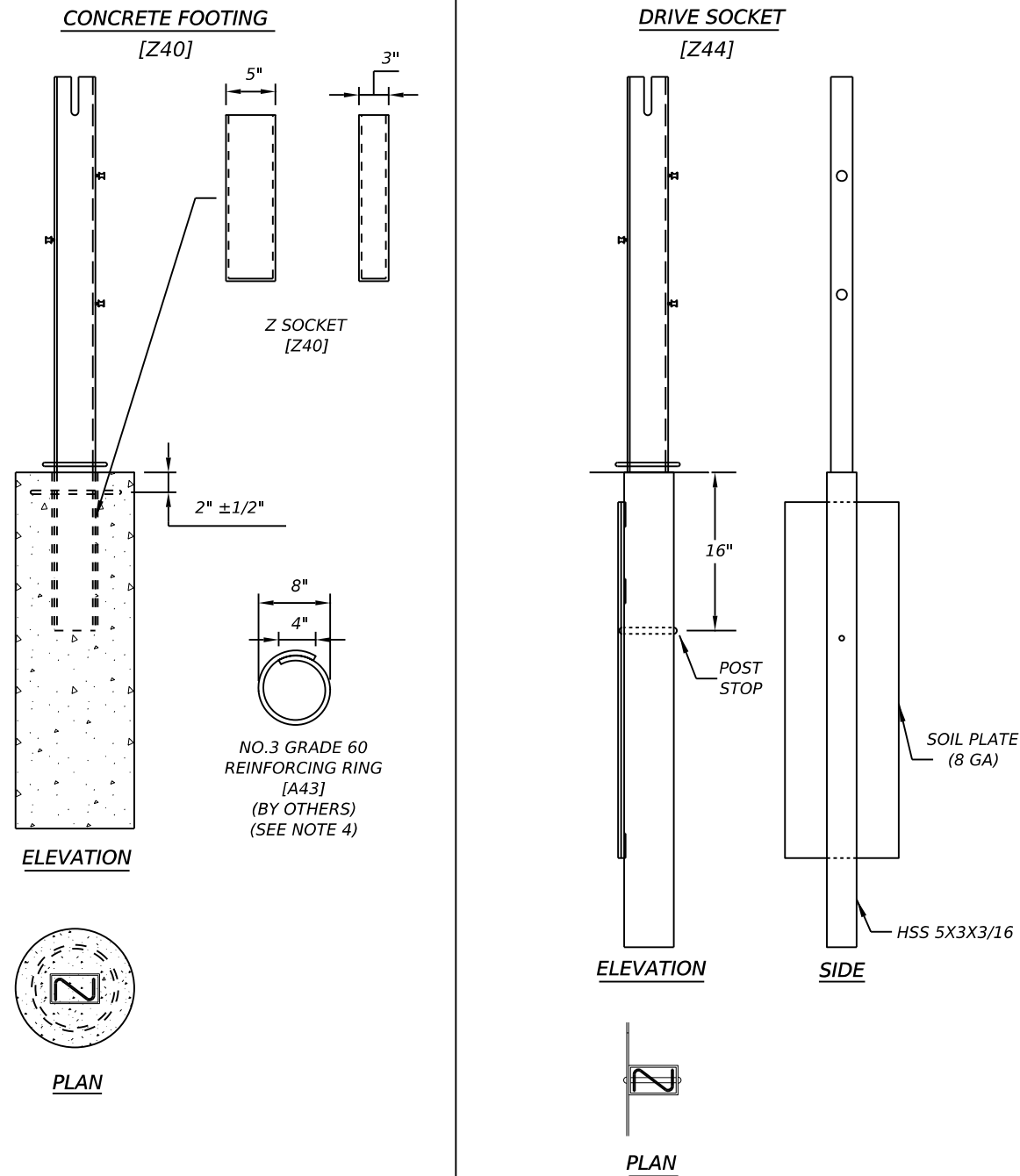
**ROPE CONNECTION DETAIL**



**NOTES SPECIFIC TO ROPE CONNECTION DETAIL**

1. THE WIRE ROPE TERMINALS SHALL BE THREADED A MINIMUM OF 1-1/2" INTO RIGGING SCREW.
2. AFTER FINAL TENSIONING, THE TERMINALS SHALL BE VISIBLE IN THE INSPECTION HOLES.

**SOCKET ASSEMBLY**



**NOTES SPECIFIC TO CONCRETE FOOTING**

1. SIZE OF FOOTING WILL BE DETERMINED BY SOIL CONDITIONS, FOUNDATION TYPE AND PROJECT CONDITIONS.
2. CONCRETE BASED ON AGENCY SPECIFICATIONS.
3. CONCRETE BY OTHERS.
4. REINFORCING RING (BY OTHERS) WILL BE USED ACCORDING TO FOUNDATION SIZE AND TYPE. THE REINFORCING RING MAY BE OMITTED IF THE FOOTING IS PLACED IN A CONTINUOUS CONCRETE MOW STRIP.
5. FOOTING SHALL BE FLUSH WITH THE GROUND LINE, TO A MAXIMUM OF 1 INCH BELOW OR ABOVE GROUND LINE.
6. SOCKET SHALL BE  $\pm 2^\circ$  OF VERTICAL PLUMB.

**NOTES SPECIFIC TO DRIVE SOCKETS**

1. SIZE OF SOIL PLATE WILL BE DETERMINED BY SOIL CONDITIONS AND PROJECT CONDITIONS.
2. THE SOIL PLATE SHALL BE PARALLEL TO ROADWAY AND CAN FACE TOWARD OR AWAY FROM THE TRAVEL LANE.
3. FOOTING SHALL BE FLUSH WITH THE GROUND LINE, TO A MAXIMUM OF 1 INCH BELOW OR ABOVE GROUND LINE.
4. SOCKET SHALL BE  $\pm 2^\circ$  OF VERTICAL PLUMB.
5. SOCKETS SHALL BE DRIVEN IN A MANNER TO NOT DISTORT OR DESTROY THE TOP OF SOCKET TO A DEGREE THAT PLACES THE SOCKET OR LINE POST OUT OF CONSTRUCTION TOLERANCES.

**GENERAL NOTES:**

1. BRIFEN DRAWINGS, SPECIFICATIONS, AND PRODUCT MANUAL SHOULD BE REVIEWED PRIOR TO STARTING AN INSTALLATION. FOR ADDITIONAL INFORMATION OR QUESTIONS, CONTACT BRIFEN USA, INC. 1-866-427-4336.
2. THE BRIFEN WRSF HAS BEEN SUCCESSFULLY TESTED TO NCHRP 350 TL-4 CONDITIONS ON SLOPES 6:1 OR FLATTER AND NCHRP 350 TL-3 CONDITIONS ON SLOPES 4:1 TO 6:1.
3. THE POST SPACING SHALL BE DETERMINED BY THE SPECIFYING AGENCY. POST SPACING MAY BE DECREASED TO AVOID OBSTRUCTIONS OR UTILITIES. IN NO EVENT SHALL THE POST SPACING EXCEED 21'-0".
4. BRIFEN WRSF SHALL BE PLACED ON A SMOOTH SURFACE, WITHOUT HUMPS, DROP-OFFS, HOLES, ETC THAT WOULD INTERFERE WITH THE STABILITY OF THE ERRANT VEHICLE. GRADING, FILL AND COMPACTION MAY BE REQUIRED TO ASSURE THAT ROPES ARE INSTALLED AT THE DESIGN HEIGHT.

SHEET 2 OF 3

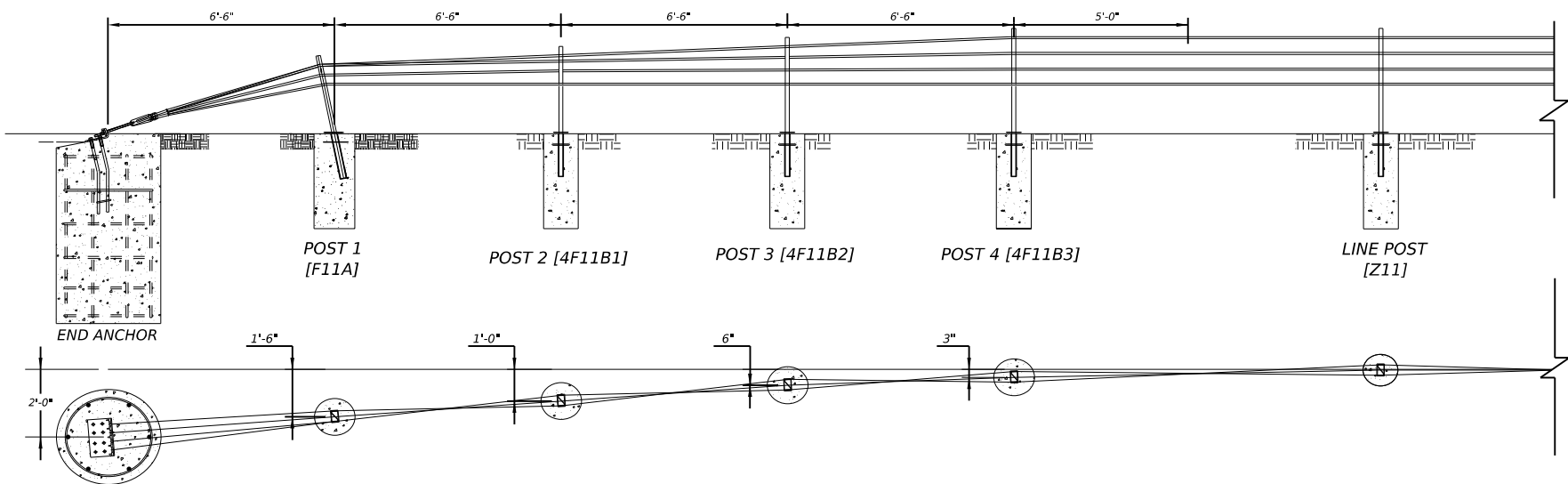
		<b>Design Division Standard</b>	
<b>BRIFEN</b> <b>WIRE ROPE SAFETY FENCE</b> <b>(TL-4)</b>			
<b>BRIFEN(TL4) - 14</b>			
FILE: brifent1414.dgn	DN: TxDOT	CK: RM	DW: VP
© TxDOT: MARCH 2014	CONT	SECT	JOB
REVISIONS		HIGHWAY	
DIST	COUNTY	SHEET NO.	

DATE:  
FILE:

DISCLAIMER: The use of this standard is governed by the "Texas Engineering Practice Act". No warranty of any kind is made by TxDOT for any purpose whatsoever. TxDOT assumes no responsibility for the conversion of this standard to other formats or for incorrect results or damages resulting from its use.

DATE:  
FILE:

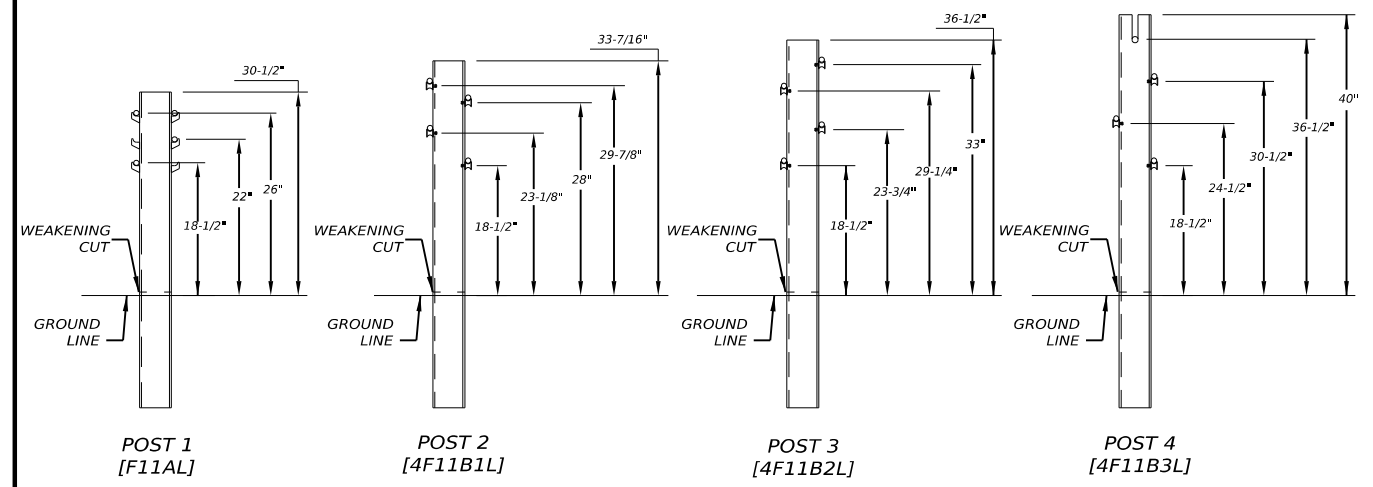
**WRGT-FL END ANCHOR LAYOUT**



**GENERAL NOTES:**

1. BRIFEN DRAWINGS, SPECIFICATIONS, AND PRODUCT MANUAL SHOULD BE REVIEWED PRIOR TO STARTING AN INSTALLATION. FOR ADDITIONAL INFORMATION OR QUESTIONS, CONTACT BRIFEN USA, INC. AT 1-866-427-4336.
2. THE WRGT-FL END ANCHOR HAS BEEN SUCCESSFULLY TESTED TO NCHRP 350 TL-3 CONDITIONS. THE LENGTH OF NEED BEGINS 31'-0" FROM THE END ANCHOR. POSTS A THROUGH POST B3, SPACED 6'-6" APART, HAVE WEAKENED CUTS AT THE GROUND THAT SHALL FACE THE ANCHOR.
3. ANCHOR AND LINE POST DIMENSIONS AND STEEL REINFORCEMENT WILL BE DETERMINED ON PROJECT SPECIFIC SOIL CLASSIFICATION, PROPERTIES AND TEMPERATURE EXTREMES. CONTACT BRIFEN USA, INC. FOR ADDITIONAL INFORMATION.
4. ALL REINFORCEMENT AND CONCRETE FOR THE ANCHORS AND LINE POSTS PROVIDED BY OTHERS.
5. REINFORCEMENT AND CONCRETE PROPERTIES SHALL MEET AGENCY SPECIFICATIONS.
6. FOR PLACEMENT NEAR GUARDRAIL OR OTHER OBSTACLES CONTACT BRIFEN USA, INC. FOR ADDITIONAL DRAWINGS AND SUPPORT.

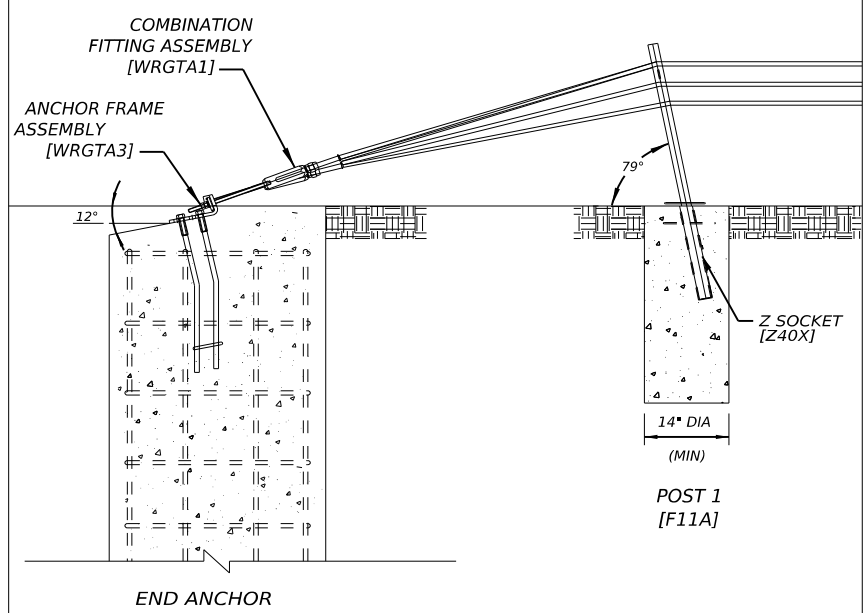
**WRGT-FL POST DETAILS**



**NOTES SPECIFIC TO WRGT-FL POST DETAIL**

1. ROPE HEIGHTS SHALL BE  $\pm 1"$  TO GROUND LINE.
2. POST SHALL BE  $\pm 4"$  FROM VERTICAL PLUMB.
3. POST CAPS SHALL BE USED IF SPECIFIED.
4. REFLECTORS SHALL BE SPACED ACCORDING TO AGENCY SPECIFICATIONS.
5. REFLECTORS CAN BE PLACED ON THE POST CAP OR POST.
6. Z EXCLUDER (Z41) SHALL BE USED.
7. POST A & SOCKET SHALL BE PLACED  $79^\circ (\pm 4^\circ)$  TOWARD END ANCHOR FROM THE HORIZONTAL PLANE.
8. POST A SOCKET SHALL BE PLACED IN 14" (MIN) CONCRETE FOUNDATION. DEPTH TO BE DETERMINED FROM SOIL CONDITIONS AND PROJECT CONDITIONS.
9. FOUNDATIONS FOR POST 2 THRU 4 SHALL BE THE SAME AS THE LINE POST ASSEMBLY'S FOR THE PROJECT.
10. WEAKENED CUTS SHALL FACE END ANCHOR.

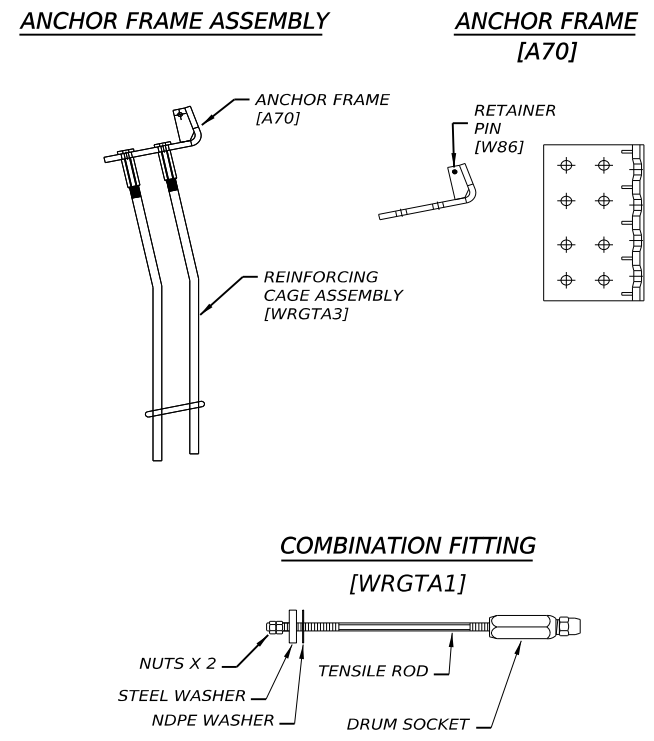
**END ANCHOR DETAILS**



**NOTES SPECIFIC TO END ANCHOR DETAIL**

1. THE END ANCHOR ASSEMBLY SHALL BE PLACED  $12^\circ (+3^\circ, -1^\circ)$  BELOW HORIZONTAL PLANE.
2. POST 1 & SOCKET SHALL BE PLACED  $79^\circ (\pm 4^\circ)$  TOWARD END ANCHOR FROM THE HORIZONTAL PLANE.
3. POST 1 SOCKET SHALL BE PLACED IN 14" (MIN) CONCRETE FOUNDATION. DEPTH TO BE DETERMINED FROM SOIL CONDITIONS AND PROJECT CONDITIONS.

**END ANCHOR COMPONENTS**



SHEET 3 OF 3

		<b>Design Division Standard</b>	
<b>BRIFEN WIRE ROPE SAFETY FENCE (TL-4)</b>			
<b>BRIFEN(TL4) - 14</b>			
FILE: brifentl414.dgn	DN: TxDOT	CK: RM	DW: VP
© TxDOT: MARCH 2014	CONT	SECT	JOB
REVISIONS			HIGHWAY
	DIST	COUNTY	SHEET NO.