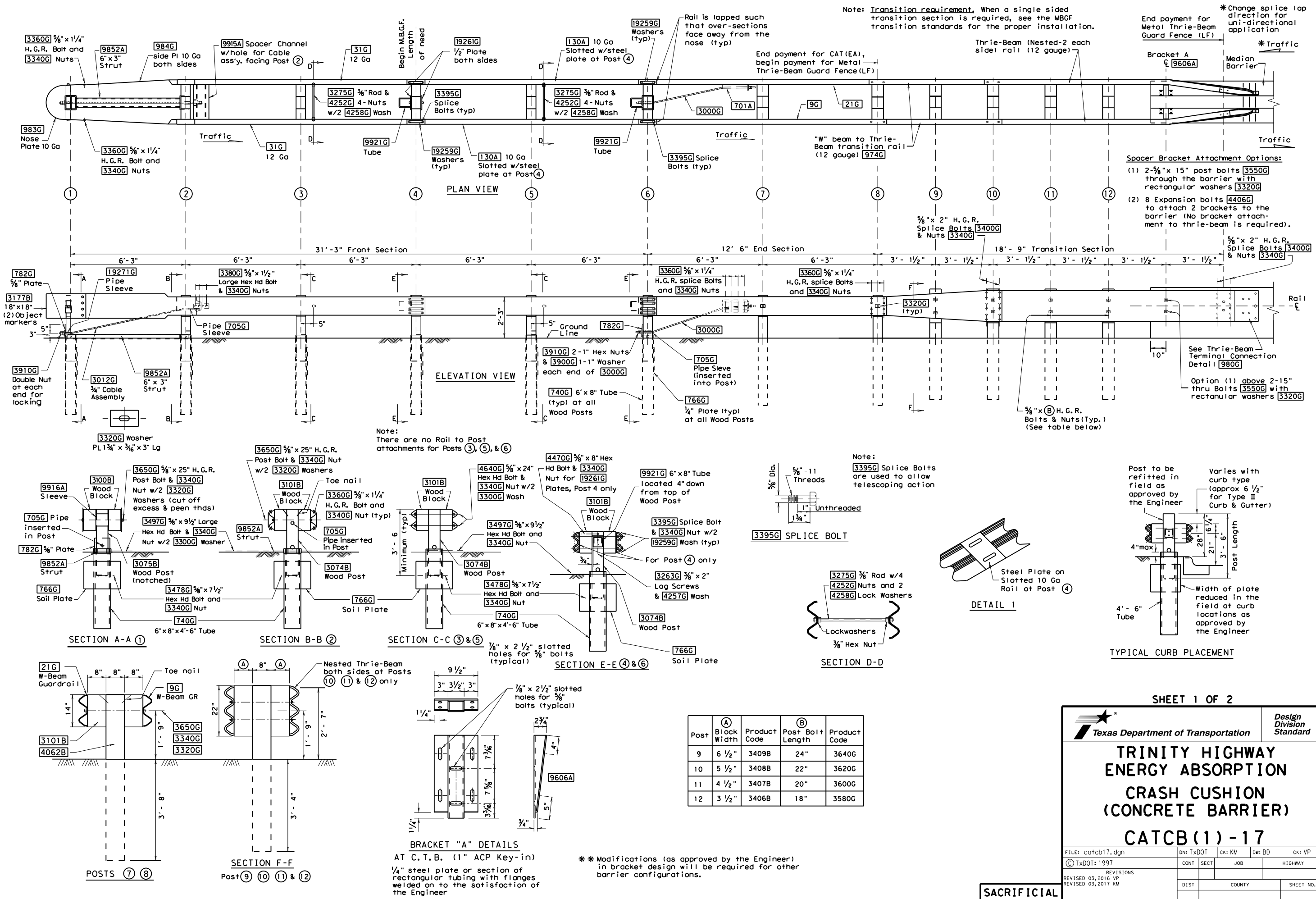


DISCLAIMER: The use of this standard is governed by the "Texas Engineering Practice Act". No warranty of any kind is made by TxDOT for any purpose whatsoever. TxDOT assumes no responsibility for the conversion of this standard to other formats or for incorrect results or damages resulting from its use.

DATE: FILE:



Texas Department of Transportation
TRINITY HIGHWAY ENERGY ABSORPTION CRASH CUSHION (CONCRETE BARRIER) CATCB(1)-17

FILE: catcb17.dgn DN: TxDOT CK: KM DW: BD CK: VP
 © TxDOT: 1997 CONT SECT JOB HIGHWAY
 REVISIONS
 REVISED 03, 2016 VP DIST COUNTY SHEET NO.
 REVISED 03, 2017 KM

SACRIFICIAL

DISCLAIMER: The use of this standard is governed by the "Texas Engineering Practice Act". No warranty of any kind is made by TxDOT for any purpose whatsoever. TxDOT assumes no responsibility for the conversion of this standard to other formats or for incorrect results or damages resulting from its use.

DATE:
FILE:

CATCB FRONT SECTION (POSTS 1 THRU 6)		
BILL OF MATERIAL		
Mfr Code #	QTY	DESCRIPTION
983G	1	Nose Plate (10 Ga)
984G	2	Side Plate (10 Ga)
31G	2	"W" Beam 12 Ga x 13'-6 1/2"
130A	2	"W" Beam 10 Ga x 13'-6 1/2"
9852A	1	Channel Strut x 6'-6"
740G	6	Steel Foundation Tube
766G	6	Soil Plate 18" x 24"
3075B	1	Wood Post 5 1/2" x 7 1/2" (Notched) (Post 1)
3074B	5	Wood Post 5 1/2" x 7 1/2" (Post 2-6)
3100B	2	Wood Block 5 1/2" x 7 1/2" (Post 1)
3101B	10	Wood Block 5 1/2" x 7 1/2" (Post 2-6)
9916A	1	Sleeve (Post 1)
9915A	1	Spacer Channel (Post 2)
9921G	2	Steel Tube (Posts 4 & 6)
19271G	1	Pipe Sleeve (Post 1)
705G	1	Pipe Sleeve (Post 2)
19261G	2	Post Plate (Post 4)
782G	1	Bearing Plate (Post 1)
3012G	1	Cable Assembly (Posts 1 to 2)
3275G	2	3/8" Restraint Rod (Post 3 & 5)
19259G	32	Plate Washer (Posts 4 & 6)
HARDWARE		
3263G	4	3/8" x 2" Lg Lag Screw
4252G	8	3/8" Hex Nut
4258G	4	3/8" Lock Washer
4257G	4	3/8" Flat Washer
3320G	4	Rectangular Washer
3395G	32	5/8" x 1 3/4" H.H. Splice Bolt
3650G	2	5/8" x 25" Lg H.G.R. Bolt
4640G	8	5/8" x 24" Lg H.H. Bolt
3478G	13	5/8" x 7 1/2" Lg H.H. Bolt
3380G	8	5/8" x 1 1/2" Lg H.H. Bolt
3360G	16	5/8" x 1 1/4" Lg H.G.R. Bolt
3340G	85	5/8" H.G.R. Nut
3300G	8	5/8" Flat Washer
3497G	6	5/8" x 9 1/2" Lg H.H. Bolt
3910G	4	1" Hex Nut
3900G	2	1" Flat Washer

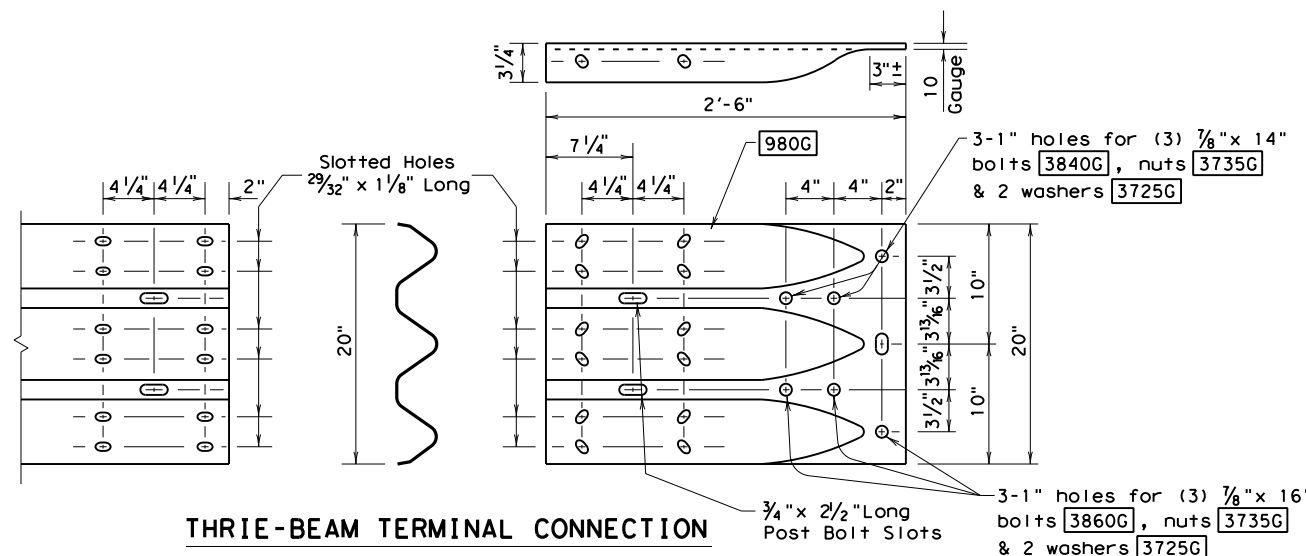
CATCB GUARDRAIL TERMINAL END SECTION (POSTS 7 & 8)		
BILL OF MATERIAL		
Mfr Code #	QTY	DESCRIPTION
4064B	2	Wood Post 5 1/2" x 7 1/2" x 6'
3101B	4	Wood Block 5 1/2" x 7 1/2"
21G	1	"W" Beam Guard Rail (12 Ga)
9G	1	"W" Beam Guard Rail (12 Ga)
701A	1	Bracket
782G	1	Bearing Plate
705G	1	Pipe Sleeve
3000G	1	Cable Assembly
3320G	2	Rectangular Washer
HARDWARE		
3360G	24	5/8" x 1 1/4" H.G.R. Splice Bolt
3400G	4	5/8" x 25" H.G.R. Post Bolt
3380G	8	5/8" x 1 1/2" Hex Hd Bolt
3340G	28	5/8" H.G.R. Nut
3300G	8	5/8" Washer
3910G	4	1" Hex Nut
3900G	2	1" Washer

CATCB TRANSITION SECTION (POST 9 THRU END SHOE)		
BILL OF MATERIAL		
Mfr Code #	QTY	DESCRIPTION
211G	4	Thrie beam 12'-6" (12 Ga)
974G	2	Trans panel 6'-3" (12 Ga)
980G	2	Special Thrie beam end shoe
3078B	3	Wood Post 6" x 8" x 6', (Posts 11&12)
3320G	20	Rectangular Washer
3340G	62	5/8" H.G.R. Nut
3400G	52	5/8" x 2" Splice Bolt
3406B	2	22 1/2" Block 6" x 3 1/2" (Post 12)
3407B	2	22 1/2" Block 6" x 4 1/2" (Post 11)
3408B	2	22 1/2" Block 6" x 5 1/2" (Post 10)
3409B	2	22 1/2" Block 6" x 6 1/2" (Post 9)
3412B	1	Wood Post 6" x 8" x 6', (Posts 9)
3560G	2	5/8" x 16" Bolt
4406G	8	5/8" x 3 3/4" Expansion Bolts w/Nuts
3580G	2	5/8" x 18" Post Bolt (Post 12)
3600G	2	5/8" x 20" Post Bolt (Post 11)
3620G	2	5/8" x 22" Post Bolt (Post 10)
3640G	2	5/8" x 24" Post Bolt (Post 9)
3725G	12	7/8" Washer (End Shoe Bolts)
3735G	6	7/8" Hex Nuts (End Shoe Bolts)
3840G	3	7/8" x 14" Hex Bolt (End Shoe)
3860G	3	7/8" x 16" Hex Bolt (End Shoe)
9606A	2	Spacer Bracket
Delineation		
3177B	2	Object Marker 18" x 18" (Cut to fit)
Optional Hardware for Single Slope Barrier-42"		
3640G	2	5/8" x 24" Bolt
4896G	6	7/8" x 24" Hex Bolt (End Shoe)

*
*

* Expansion or through bolts may be used with optional bracket installation.

- ### GENERAL NOTES
- For specific information regarding installation and technical guidance of the system, contact: Trinity Highway at 1(888)323-6374, 70 W. Madison St. Suite 2350, Chicago, IL 60602
 - Crown will be widened to accommodate the CAT system. The crown should extend at least 3 feet beyond the inside face of rail. The ground line at posts should be an extension of the roadway surface crown.
 - All bolts, nuts, washers, cable assemblies, cable anchors, post tubes, backup plates, and soil plates shall be galvanized.
 - The exposed end segment of an "End Section" should be evaluated as a potential obstacle in the determination of the need of MGBF for the opposing direction of traffic.
 - For placement at curb sections, the height from gutter pan to post bolt will be 21", and the front section shall be flared (See Detail 2).
 - The wood blockouts shall be "toe nailed" to the rectangular wood posts to prevent them from turning when the wood shrinks.
 - Either 6"- 8" or 5 1/2" x 7 1/2" wood blocks may be used at posts 1 thru 8 as supplied by the manufacturer.
 - If a "single sided" transition section is required for the attachment to a rigid concrete rail, see the MGBF transition standards for the proper installation.
 - Object markers shall be installed on the front of the terminal as detailed on the D&OM(VIA).



SHEET 2 OF 2

		Design Division Standard	
TRINITY HIGHWAY ENERGY ABSORPTION CRASH CUSHION (CONCRETE BARRIER) CATCB(1) - 17			
FILE: catcb17.dgn	DN: TxDOT	CK: KM	DW: BD
© TxDOT: 1997	CONT	SECT	JOB
REVISIONS	DIST		COUNTY
REVISED 03, 2016 VP	SHEET NO.		
REVISED 03, 2017 KM			

SACRIFICIAL