

DISCLAIMER: The use of this standard is governed by the "Texas Engineering Practice Act". No warranty of any kind is made by TxDOT for any purpose whatsoever. TxDOT assumes no responsibility for the conversion of this standard to other formats or for incorrect results or damages resulting from its use.

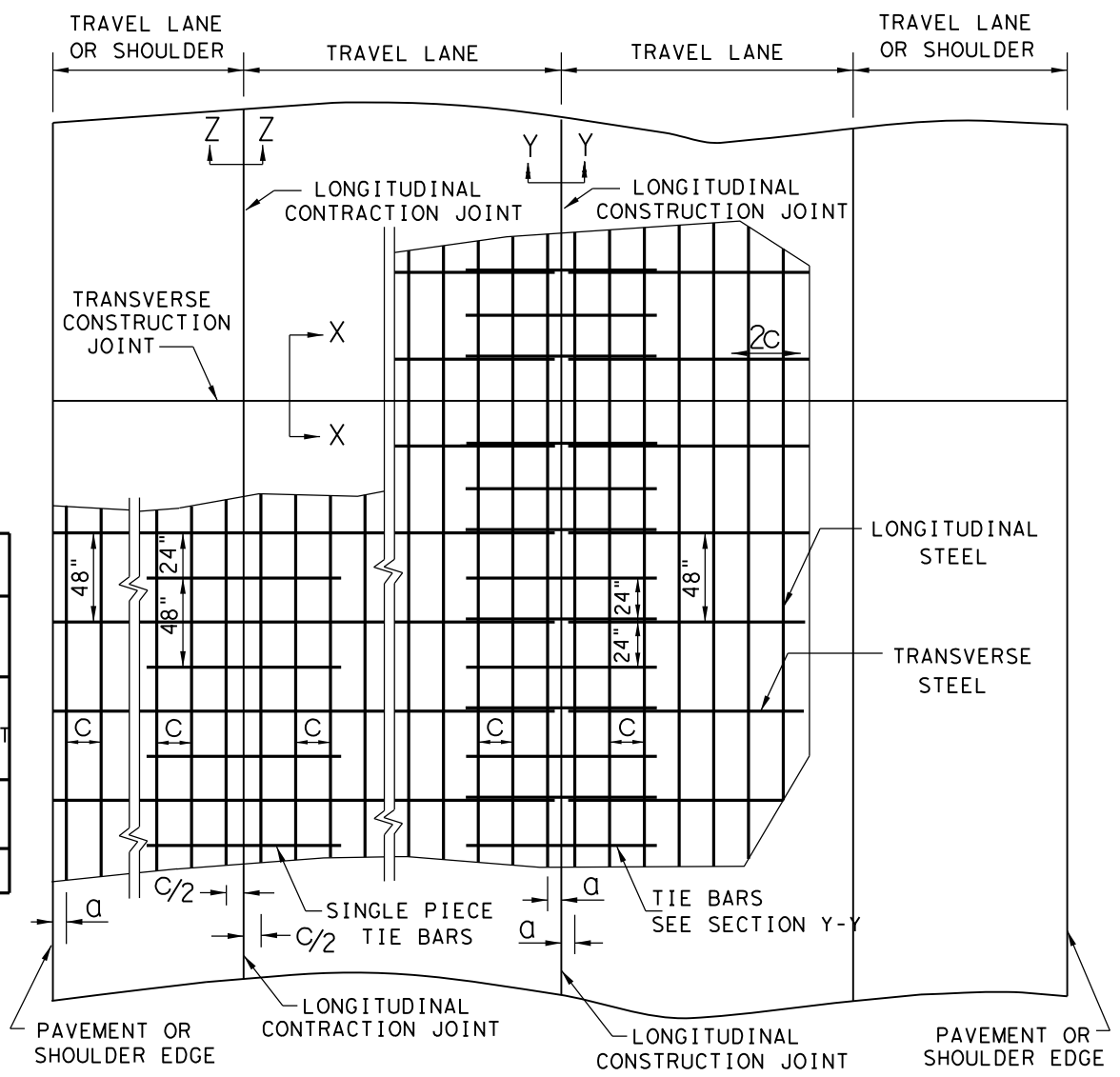
**GENERAL NOTES**

1. DETAILS FOR PAVEMENT WIDTH, PAVEMENT THICKNESS AND THE CROWN CROSS-SLOPE SHALL BE SHOWN ELSEWHERE IN THE PLANS. FOR PAVEMENTS WIDER THAN 100 FT. WITHOUT A FREE LONGITUDINAL JOINT, ADDITIONAL DETAIL MAY BE SHOWN ELSEWHERE IN THE PLANS.
2. USE COARSE AGGREGATES WITH A RATED COEFFICIENT OF THERMAL EXPANSION (COTE) OF NOT MORE THAN  $5.5 \times 10^{-6}$  IN/IN/°F AS LISTED IN THE CONCRETE RATED SOURCE QUALITY CATALOG (CRSQC).
3. ALL THE REINFORCING STEEL AND TIE BARS SHALL BE DEFORMED STEEL BARS CONFORMING TO ASTM A 615 (GRADE 60) OR ASTM A 996 (GRADE 60) OR ABOVE. STEEL BAR SIZES AND SPACINGS SHALL CONFORM TO TABLE NO.1 AND TABLE NO.2.
4. STEEL BAR PLACEMENT TOLERANCE SHALL BE +/- 1 IN. HORIZONTALLY AND +/- 0.5 IN. VERTICALLY. CALCULATED AVERAGE BAR SPACING (CONCRETE PLACEMENT WIDTH / NUMBER OF LONGITUDINAL BARS IN A SINGLE LAYER) SHALL CONFORM TO TABLE NO.1.
5. ADJUST REINFORCING STEEL VERTICALLY USING SHIMS OR OTHER METHODS, AS APPROVED, TO MEET VERTICAL TOLERANCES PRIOR TO CONCRETE PLACEMENT.
6. PAVEMENT WIDTHS OF MORE THAN 15 FT. SHALL HAVE A LONGITUDINAL JOINT (SECTION Z-Z OR SECTION Y-Y). THESE JOINTS SHALL BE LOCATED WITHIN 6 IN. OF THE LANE LINE UNLESS THE JOINT LOCATION IS SHOWN ELSEWHERE ON THE PLANS.
7. THE MINIMUM PROJECTION OF TIE BARS INTO THE ADJACENT PLACEMENT IS 22.5 IN. FOR #6 BARS AND 18.5 IN. FOR #5 BARS.
8. SEE STANDARD SHEET "CONCRETE CURB AND CURB AND GUTTER," FOR DETAILS WHEN TYING CONCRETE CURB OR CURB GUTTER AT A LONGITUDINAL JOINT.
9. REPLACE MISSING OR DAMAGED TIE BARS WITHOUT ADDITIONAL COMPENSATION BY DRILLING MIN. 10 IN. DEEP AND GROUTING TIE BARS WITH TYPE III, CLASS C EPOXY. MEET THE PULL-OUT TEST REQUIREMENTS IN ITEM 361.
10. OMIT TIE BARS LOCATED WITHIN 18-IN. OF THE TRANSVERSE CONSTRUCTION JOINTS (SECTION X-X). USE HAND-OPERATED IMMERSION VIBRATORS TO CONSOLIDATE THE CONCRETE ADJACENT TO ALL FORMED JOINTS.
11. THE DETAIL FOR THE JOINT SEALANT AND RESERVOIR IS SHOWN ON STANDARD SHEET "CONCRETE PAVING DETAILS, JOINT SEALS."

TABLE NO.1 LONGITUDINAL STEEL					
SLAB THICKNESS AND BAR SIZE		FOR BOTH STEEL MATS		LOWER STEEL MAT HEIGHT	TOP STEEL MAT HEIGHT
		LONGITUDINAL STEEL BARS	FIRST SPACING AT EDGE OR JOINT		
T (IN.)	BAR SIZE	SPACING C (IN.)	SPACING a (IN.)	T1 (IN.)	T2 (IN.)
14	#6	9.5	3 TO 4	4.5	8.0
15	#6	8.5	3 TO 4	5.0	8.5

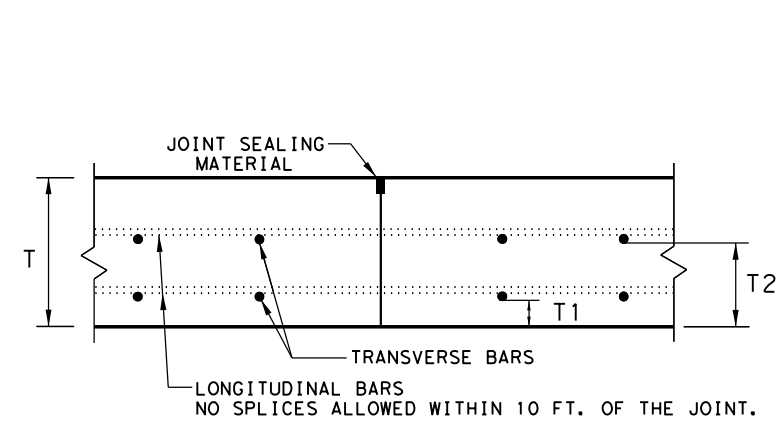
TABLE NO.2 TRANSVERSE STEEL AND TIE BARS						
SLAB THICKNESS T (IN.)	FOR BOTH STEEL MATS		FOR LOWER STEEL MAT ONLY		FOR BOTH STEEL MATS	
	TRANSVERSE STEEL		TIE BARS AT LONGITUDINAL CONTRACTION JOINT (SECTION Z-Z)		TIE BARS AT LONGITUDINAL CONSTRUCTION JOINT (SECTION Y-Y)	
	BAR SIZE*	SPACING (IN.)	BAR SIZE	SPACING (IN.)	BAR SIZE	SPACING (IN.)
14 - 15	#5	48	#6	48	#6	24

\*CONTRACTOR MAY USE #6 REINFORCING STEEL INSTEAD OF #5 REINFORCING STEEL OR COMBINATION OF EACH SIZE

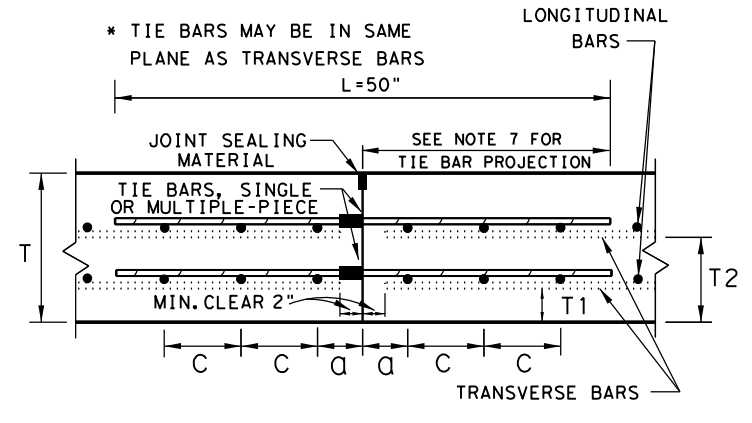


**TYPICAL PAVEMENT LAYOUT**

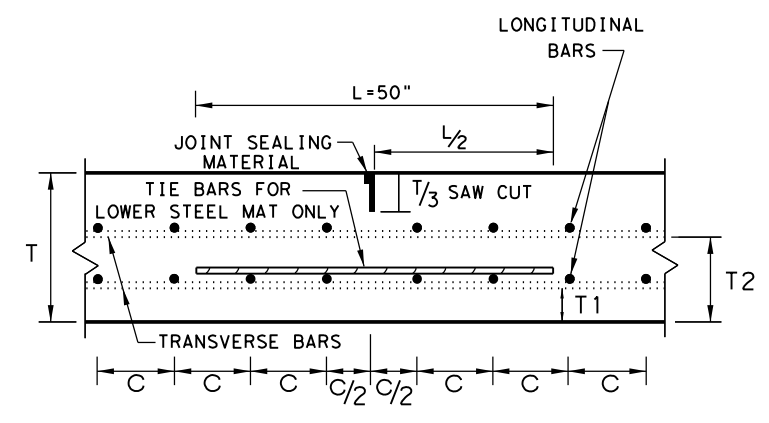
PLAN VIEW (NOT TO SCALE)



**TRANSVERSE CONSTRUCTION JOINT SECTION X - X**



**LONGITUDINAL CONSTRUCTION JOINT SECTION Y - Y**



**LONGITUDINAL CONTRACTION JOINT SECTION Z - Z**



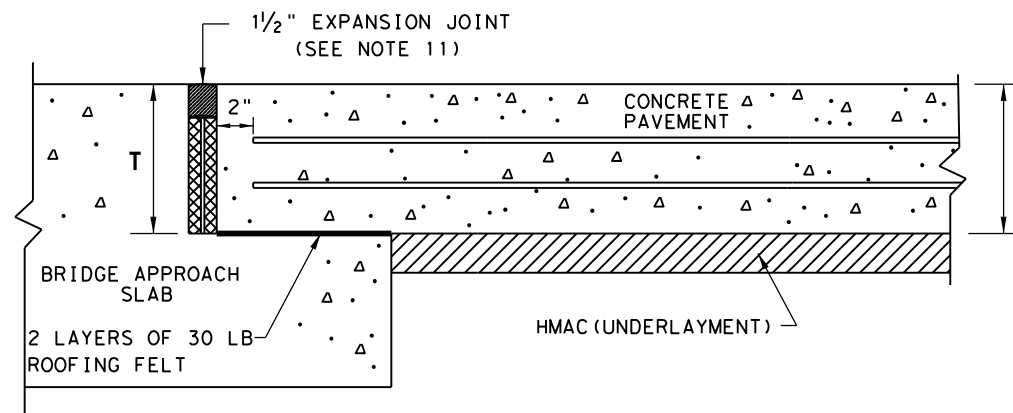
**CONTINUOUSLY REINFORCED CONCRETE PAVEMENT**  
**TWO LAYER STEEL BAR PLACEMENT**  
**T - 14 & 15 INCHES**  
**CRCP (2) - 23**

FILE: crcp223.dgn	DN: TxDOT	CK: KM	DW: CES	CK:
© TxDOT: APRIL 2023	CONT	SECT	JOB	HIGHWAY
APRIL 2023: REVISIONS				
REMOVED ADDITIONAL TIEBAR AT TRANSVERSE CONSTRUCTION JOINTS	DIST	COUNTY		SHEET NO.

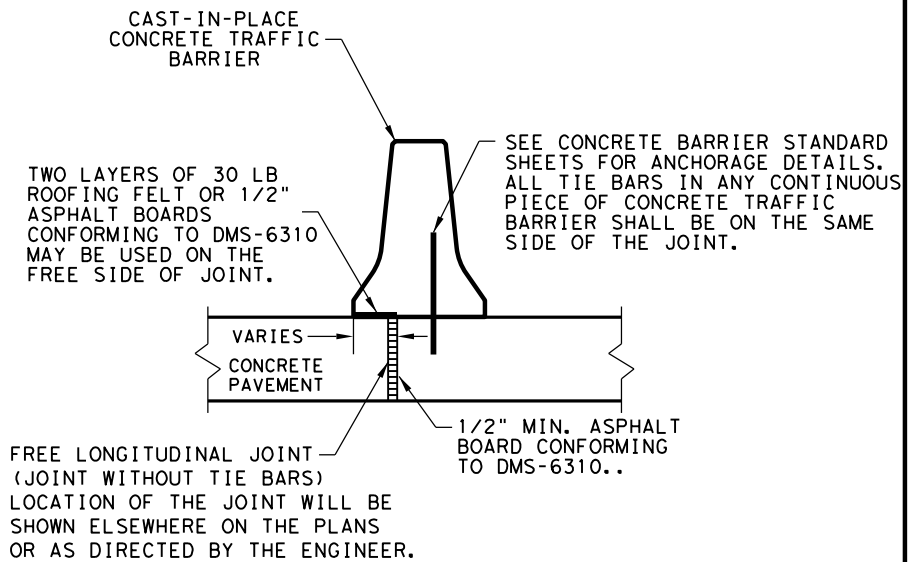
DATE: FILE:

DISCLAIMER: The use of this standard is governed by the "Texas Engineering Practice Act". No warranty of any kind is made by TxDOT for any purpose whatsoever. TxDOT assumes no responsibility for the conversion of this standard to other formats or for incorrect results or damages resulting from its use.

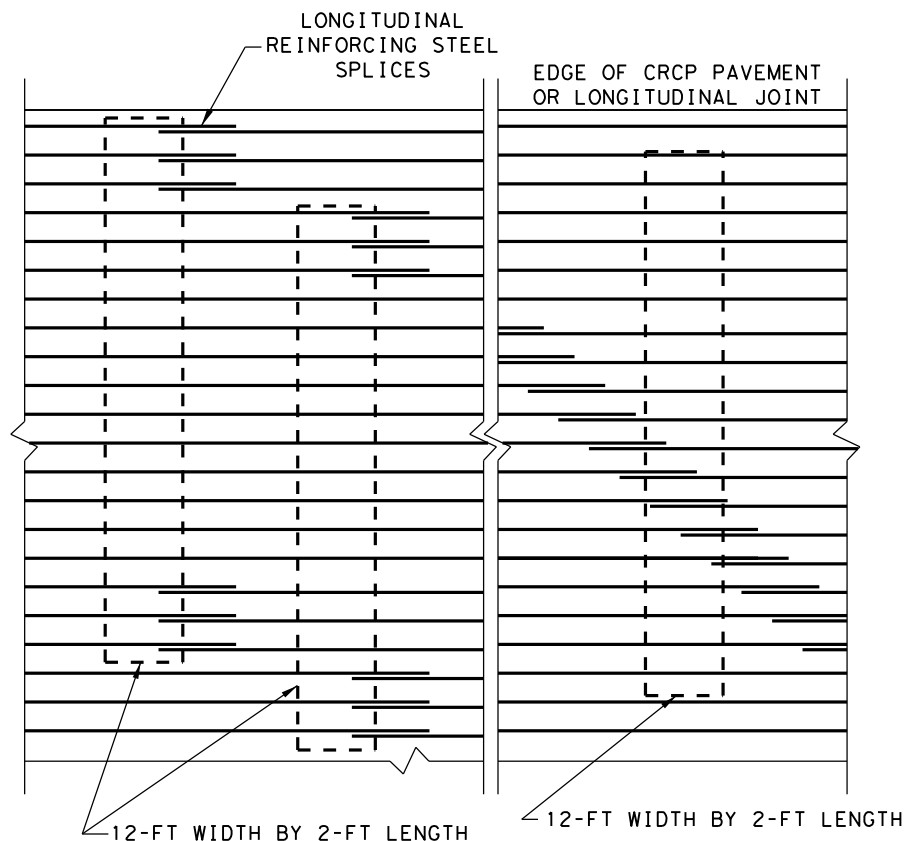
DATE:  
FILE:



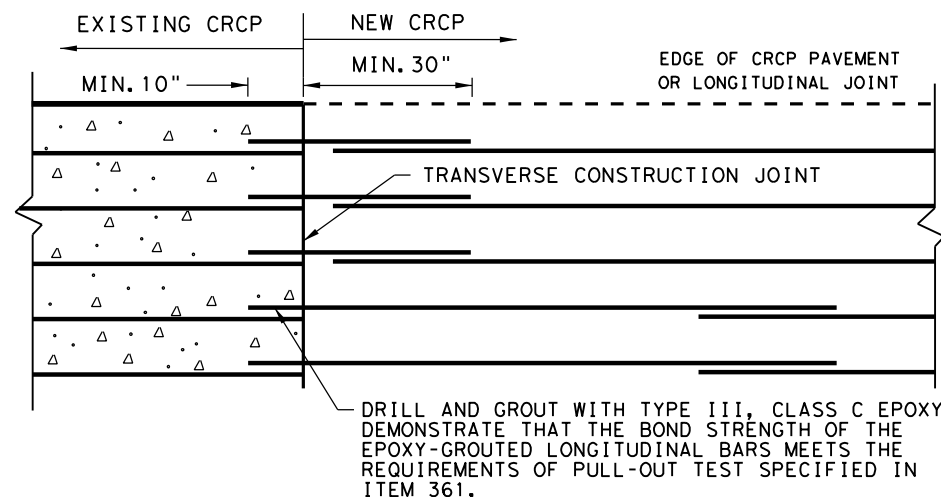
**TRANSVERSE EXPANSION JOINT DETAIL  
AT BRIDGE APPROACH**



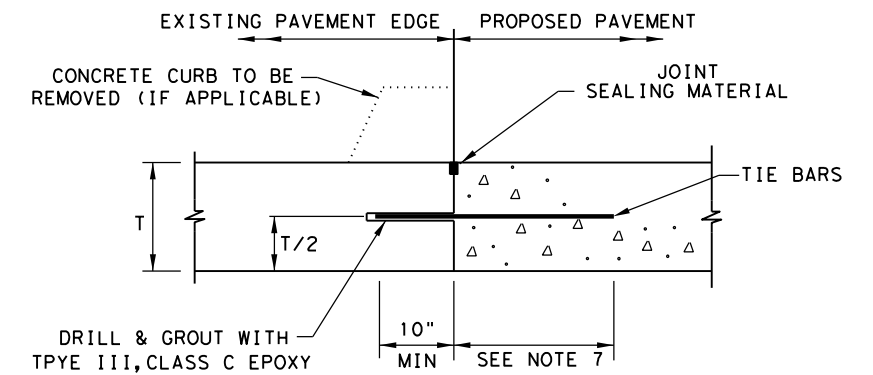
**CENTERLINE FREE LONGITUDINAL JOINT DETAIL**



**EXAMPLES OF LAP CONFIGURATION  
PLAN VIEW (NOT TO SCALE)**

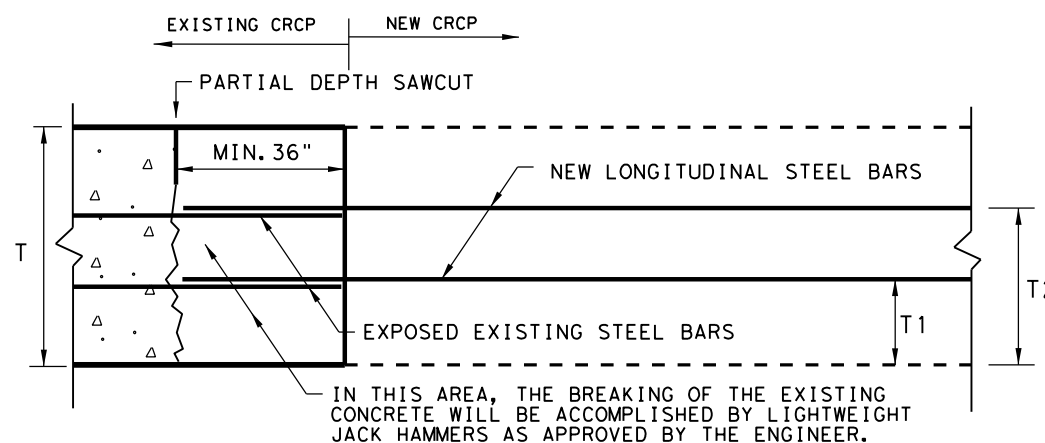


**OPTION A: DRILL AND EPOXY  
PLAN VIEW (NOT TO SCALE)**



1. BEFORE CONCRETE PLACEMENT, PERFORM PULL-OUT TESTS ON EPOXY-GROUTED TIE BARS IN ACCORDANCE WITH ITEM 360.
2. SPACE TIE BARS AT 24" SPACING.

**LONGITUDINAL WIDENING JOINT DETAIL**



**OPTION B: BREAKBACK AND LAP**

**TRANSVERSE TIE JOINT DETAIL  
NEW CRCP TO EXISTING CRCP**

SHEET 2 OF 2



**CONTINUOUSLY REINFORCED  
CONCRETE PAVEMENT  
TWO LAYER STEEL BAR PLACEMENT  
T - 14 & 15 INCHES  
CRCP (2) - 23**

FILE: crcp223.dgn	DN: TxDOT	CK: KM	DW: CES	CK:
© TxDOT: APRIL 2023	CONT	SECT	JOB	HIGHWAY
APRIL 2023: MODIFIED EXPANSION JOINT DETAIL AT BRIDGE APPROACH SLAB	REVISIONS		DIST	COUNTY
				SHEET NO.