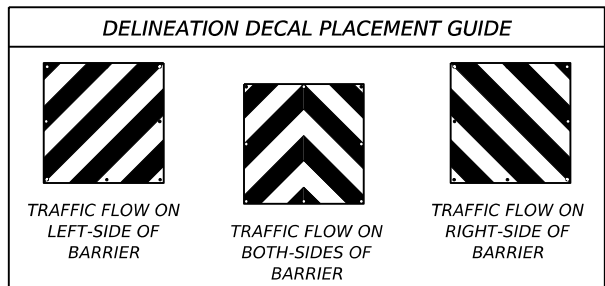
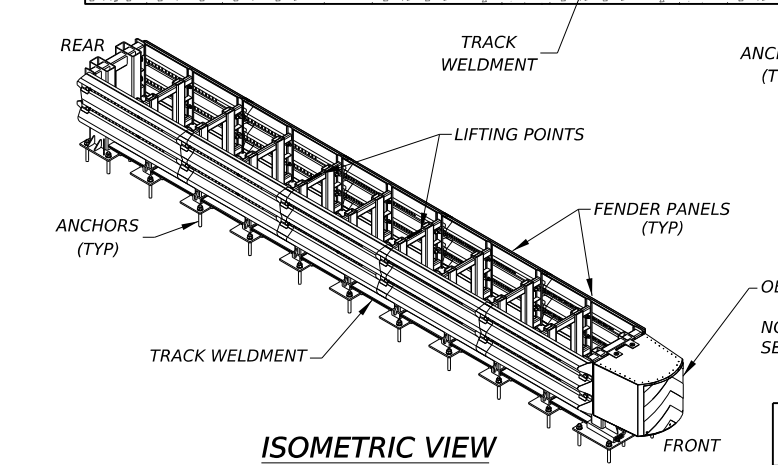
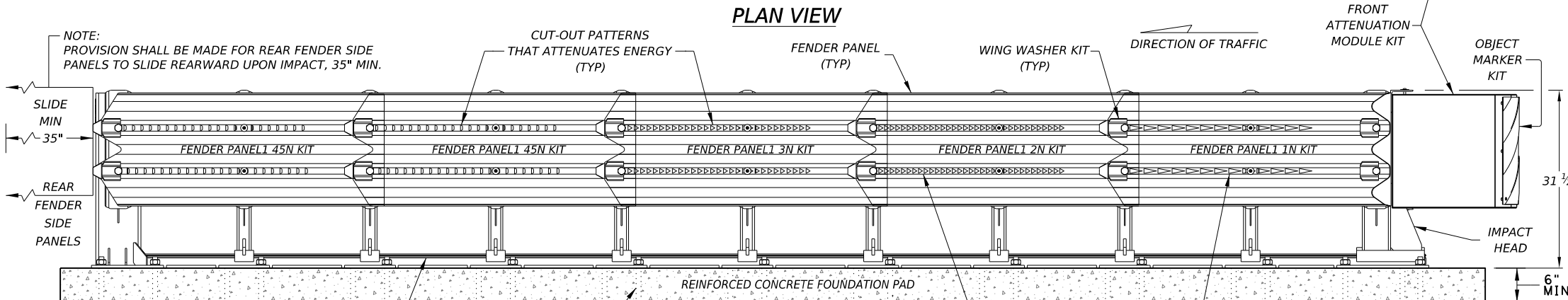
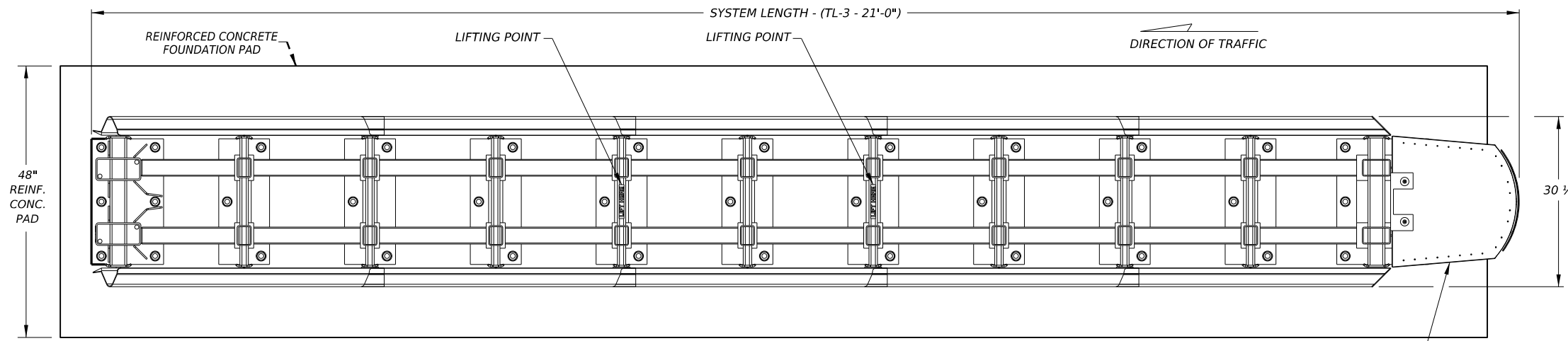


DISCLAIMER: The use of this standard is governed by the "Texas Engineering Practice Act". No warranty of any kind is made by TxDOT for any purpose whatsoever. TxDOT assumes no responsibility for the conversion of this standard to other formats or for incorrect results or damages resulting from its use.



* NOTE: ENGINEER OR CONTRACTOR SHALL COORDINATE WITH THE MANUFACTURER FOR THE CORRECT DECAL PER TRAFFIC FLOW, LEFT, RIGHT OR BOTH-SIDES.

NOTE: APPLY A HIGH REFLECTIVE DECAL TO THE NOSE PLATE. DELINEATION DECAL ORIENTATION IS SHOWN ON THE CONSTRUCTION PLAN SET AND SHALL BE IN ACCORDANCE WITH THE TEXAS MUTCD FOR TRAFFIC CONTROL DEVICES. DECALS ARE AVAILABLE FOR TRAFFIC FLOW ON THE LEFT-SIDE, BOTH -SIDES AND RIGHT-SIDE. THE ORIENTATION BETWEEN THE LEFT-SIDE AND RIGHT-SIDE TRAFFIC IS CHANGED BY ROTATING THE DECAL 90 DEGREES AND REINSTALLING.

PLAN VIEW

ELEVATION VIEW

ISOMETRIC VIEW

FOUNDATION & ANCHORING REQUIREMENTS

FOUNDATION TYPE:	REINFORCED CONCRETE PAD OR ROADWAY
FOUNDATION:	6" MINIMUM DEPTH CONCRETE [4,000 PSI]
ANCHORAGE:	7/8" x 8" THREADED RODS EMBEDDED 5 1/2" - APPROVED ADHESIVE
FOUNDATION TYPE:	NON-REINFORCED CONCRETE PAD OR ROADWAY
FOUNDATION:	8" MINIMUM CONCRETE [4,000 PSI]
ANCHORAGE:	7/8" x 8" THREADED ROD EMBEDDED 5 1/2" - APPROVED ADHESIVE
FOUNDATION TYPE:	ASPHALT OVER COMPACTED SUBBASE
FOUNDATION:	6" MINIMUM ASPHALT OVER 6" MINIMUM SUBBASE
ANCHORAGE:	7/8" x 18" THREADED ROD EMBEDDED 17" - APPROVED ADHESIVE
FOUNDATION TYPE:	ASPHALT OVER CONCRETE
FOUNDATION:	3" MINIMUM ASPHALT OVER 3" MINIMUM CONCRETE [4,000 PSI]
ANCHORAGE:	7/8" x 18" THREADED ROD EMBEDDED 17" - APPROVED ADHESIVE
FOUNDATION TYPE:	ASPHALT ONLY
FOUNDATION:	8" MINIMUM
ANCHORAGE:	7/8" x 18" THREADED ROD EMBEDDED 17" - APPROVED ADHESIVE

NOTE: SEE TRAFFIX'S PRODUCT INSTALLATION MANUAL FOR THE ANCHORING INSTALLATION AND APPROVED ADHESIVE.

NOTE: IF THE SYSTEM IS ANCHORED TO ASPHALTIC CONCRETE, IT SHOULD BE RELOCATED TO FRESH, UNDISTURBED ASPHALT AND RE-ANCHORED AFTER EACH IMPACT TO ENSURE ADEQUATE FUTURE PERFORMANCE. SINCE ASPHALT PADS MAY EXPAND OR CONTRACT WHEN EXPERIENCING HEAT CYCLES, IT IS IMPORTANT TO CHECK ANCHOR BOLTS EVERY SIX MONTHS TO ENSURE THEY HAVE NOT LOOSENED.

TEST LEVEL	UNIT LENGTH (APPROX.)	UNIT WIDTH
TL-3	21'-0"	2'-6 1/8"

NOTE: CRASH CUSHION ATTENUATOR LOCATION DETAILS ARE IN THE GENERAL NOTES AND IN THE TRAFFIX'S PRODUCT INSTALLATION MANUAL.

TRANSITION OPTIONS	
1	THREE-BEAM TRANSITION
2	NARROW VERTICAL FACE TRANSITION
3	THREE-BEAM ROADSIDE TRANSITION
4	SAFETY SHAPE TRANSITION
5	BRIDGE SHOE ROADSIDE TRANSITION

NOTE: THIS STANDARD IS A BASIC REPRESENTATION OF THE DELTA CRASH CUSHION, IT IS NOT INTENDED TO REPLACE THE INSTALLATION INSTRUCTIONS MANUAL.


GENERAL NOTES

- FOR SPECIFIC INFORMATION REGARDING INSTALLATION AND TECHNICAL GUIDANCE OF THE SYSTEM, CONTACT: TRAFFIX DEVICES, INC. HEADQUARTERS AT 1(949)361-5663, WEBSITE: www.traffixdevices.com
- THE DELTA CRASH CUSHION IS A NON-GATING, REDIRECTIVE CRASH CUSHION MANUFACTURED BY TRAFFIX DEVICES, INC. THE DELTA CC IS A MASH APPROVED TL-3 CRASH CUSHION.
- MAXIMUM PERMISSIBLE CROSS SLOPE IS 10%.
- THE ANCHORS MAY BE SET IN CONCRETE, ASPHALT OR A HYBRID OF THE TWO.
- CONCRETE PADS SHALL BE 6" MIN. REINFORCED 28 MPa [4,000 PSI] (P.C.) OR 8" MIN. NON-REINFORCED 28MPa [4,000 PSI] CONCRETE FOUNDATION. PLACING ANCHORS REQUIRES A STEP PROCESS, PLEASE SEE INSTALLATION MANUAL FOR MORE INFORMATION ON ANCHORING.
- APPROPRIATE TRANSITION PANELS OR SIDE PANELS WILL BE REQUIRED FOR PROPER IMPACT PERFORMANCE, AND THE DELTA CC REAR FENDER PANELS MUST BE ABLE TO TELESCOPE REARWARD WITHOUT OBSTRUCTION FOR 35" (890 mm). THE CORRECT TRANSITION(S) WILL DEPEND ON THE TYPE OF BARRIER OR ROAD FEATURE THE DELTA CC IS SHIELDING.
- CRASH CUSHION ATTENUATES THE INCOMING CRASH ENERGY WITH SHEAR BOLTS TEARING THROUGH CUT-OUTS OF VARIOUS SIZES AND SHAPES. SEE PRODUCT MANUFACTURER'S INSTALLATION MANUAL FOR MORE INFORMATION.
- TRANSITION PANEL(S) MUST NEST UNDER THE REAR 45N FENDER PANELS IN ORDER FOR THE DELTA CC TO PROPERLY OPERATE. PLEASE SEE MANUFACTURER'S SHOP DRAWINGS FOR APPROVED TRANSITION INSTALLATION AND THE OBSTRUCTIONS THAT ARE BEING SHIELDED WITH MINIMUM AND MAXIMUM REQUIRED WIDTHS AND DELTA CC PLACEMENT.

PARTS IDENTIFICATION GUIDE FOR DELTA CC

QUANTITY (PER SYSTEM)	PART NUMBER	PART DESCRIPTION
2	75260-TL3-1N-KIT	FENDER PANEL 1 KN KIT
2	75260-TL3-2N-KIT	FENDER PANEL 2 KN KIT
2	75260-TL3-3N-KIT	FENDER PANEL 3 KN KIT
4	75260-TL3-45N-KIT	FENDER PANEL 45 KN KIT
1	75220-N-4Y	FRONT ATTENUATION MODEL KIT
1	75221-MO-4Y	OBJECT MARKER KIT
1	75230-N	FRONT IMPACT DIAPHRAGM KIT
39 ANCHOR RODS (7/8"-9x8"), 39 NUTS (7/8"-9), 39 WASHERS (7/8")	75208-CA-KIT	CONCRETE *** ANCHOR KIT
1 ANCHOR ROD (7/8"-9x8"), 1 NUT (7/8"-9), 1 WASHER (7/8")	75208-CA	CONCRETE *** ANCHOR ROD
39 ANCHOR RODS (7/8"-9x18"), 39 NUTS (7/8"-9), 39 WASHERS (7/8")	75218-AA-KIT	ASPHALT *** ANCHOR KIT
1 ANCHOR ROD (7/8"-9x18"), 1 NUT (7/8"-9), 1 WASHER (7/8")	75218-AA	ASPHALT *** ANCHOR ROAD
24	75207-KIT	WING WASHER KIT
9	75240-N	STEEL DIAPHRAGM
1	75250-TL3-1N-KIT	TRACK WELDMENT COMPLETE

*** OPTION TO USE EITHER ONE OR THE OTHER.



Design Division Standard

DELTA CRASH CUSHION (NARROW)

TL-3 MASH COMPLIANT

DEL TACC-22

FILE: del1acc21.dgn	DN: TXDOT	CK: KM	DW: SS	CK: AG
© TXDOT: SEPTEMBER 2021	CONT	SECT	JOB	HIGHWAY
REVISIONS				
DIST	COUNTY			SHEET NO.

REUSABLE

DATE: FILE: