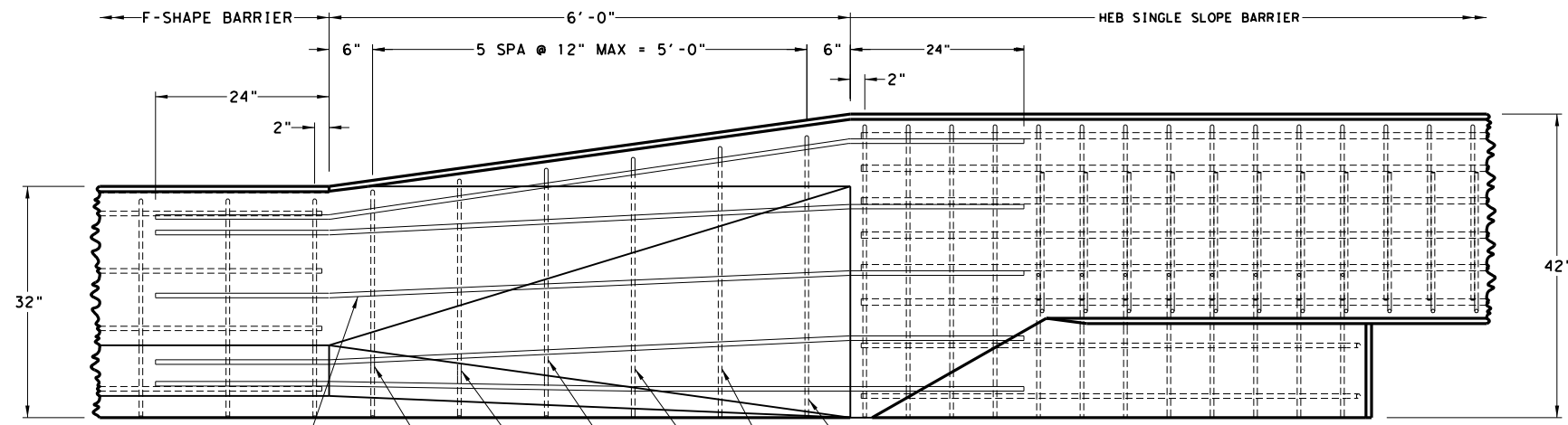


DISCLAIMER: THE USE OF THIS STANDARD IS COVERED BY THE "TEXAS ENGINEERING PRACTICE ACT". NO WARRANTY OF ANY KIND IS MADE BY TXDOT FOR ANY PURPOSE WHATSOEVER. TXDOT ASSUMES NO RESPONSIBILITY FOR THE CONVERSION OF THIS STANDARD TO OTHER FORMATS OR FOR INCORRECT RESULTS OR DAMAGES RESULTING FROM ITS USE.

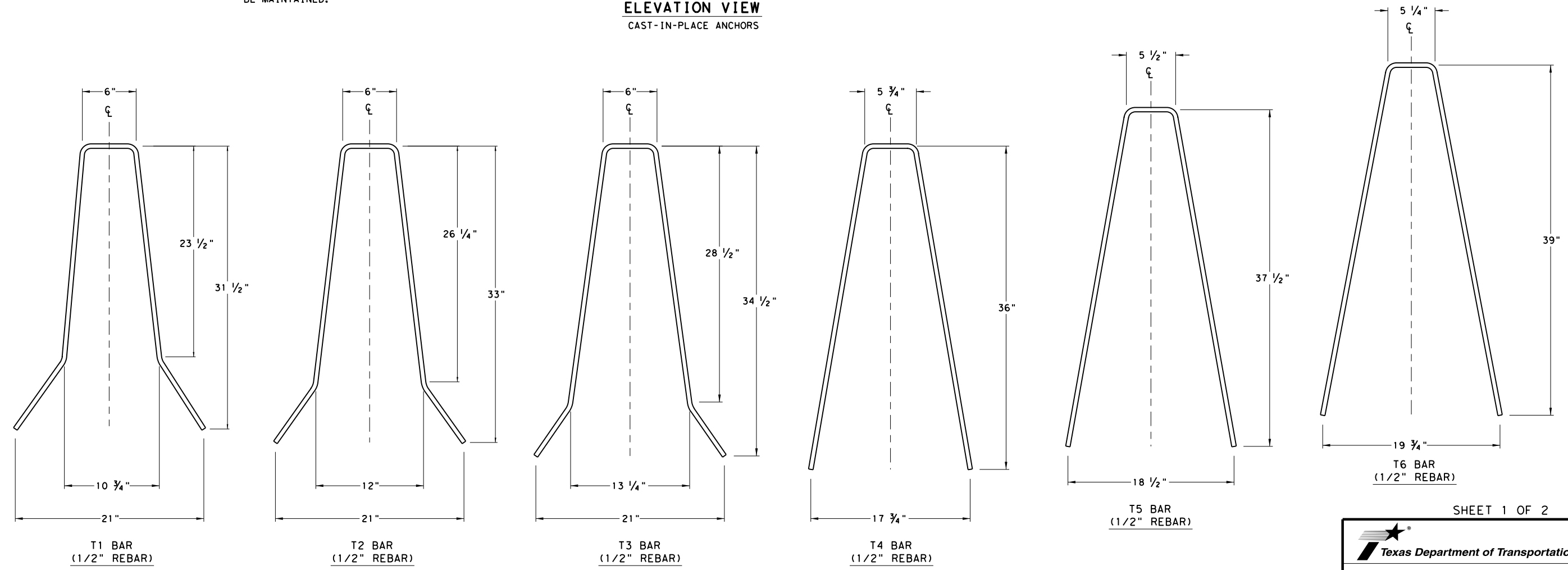
DATE:  
FILE:



5/8" REBAR X 5  
EACH FACE FIELD  
BEND AS NEEDED.  
A MINIMUM OF 1-3/4"  
CONCRETE COVER SHOULD  
BE MAINTAINED.

NOTE:  
1. SEE HYDRAULICALLY EFFICIENT BARRIER (HEB) (RIGID PAVEMENT)  
AND CAST-IN-PLACE TYPE F STANDARD (BRIDGE DECK OR CRCP)  
FOR APPLICABLE DETAILS AND INFORMATION ON ABUTTING  
BARRIER TYPES.

**ELEVATION VIEW**  
CAST-IN-PLACE ANCHORS



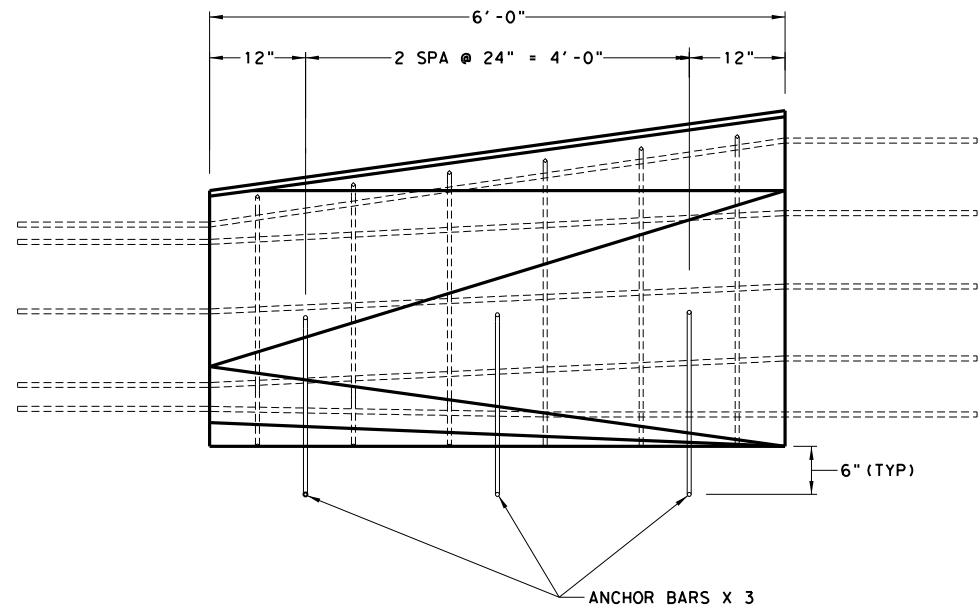
**GENERAL NOTES**

1. CONCRETE SHALL BE CLASS C. UNLESS OTHERWISE SPECIFIED IN THE PLANS. CONCRETE STRENGTH IS 3600 PSI.
2. THESE DETAILS COVER BARRIER PER ITEM 514, "PERMANENT CONCRETE TRAFFIC BARRIER".
3. THE ANCHORAGE SHOWN IS CONSIDERED SUBSIDIARY TO THE BID ITEM.
4. 1" CHAMFER (3/4" EACH WAY) ON EDGES OF PARAPET AND CORNERS OF POSTS WHERE INDICATED.
5. ANCHORAGE REBAR NOT SHOWN FOR CLARITY.
6. ALL REBAR IS GRADE 60 AND SHALL CONFORM TO ASTM A615. REBAR DIMENSIONS IN ELEVATION AND SECTION VIEW ARE TO CENTER UNLESS OTHERWISE INDICATED BY "CVR" (COVER).
7. ANCHORAGE: THE STANDARD ANCHORAGE SYSTEM, AND OPTIONAL EPOXY ANCHORAGE ARE SHOWN ON SHT. 2. THE OPTIONAL EPOXY ANCHORAGE SYSTEM SHALL USE A HILTI HIT-RE-500 V3 EPOXY OR APPROVED EQUIVALENT. FOLLOW THE MANUFACTURER'S DIRECTIONS FOR INSTALLING THE EPOXIED ANCHOR BARS. ALL ANCHORAGE SHOWN IS THE MINIMUM REQUIRED, AND CONSIDERED SUBSIDIARY TO THE BID ITEM.

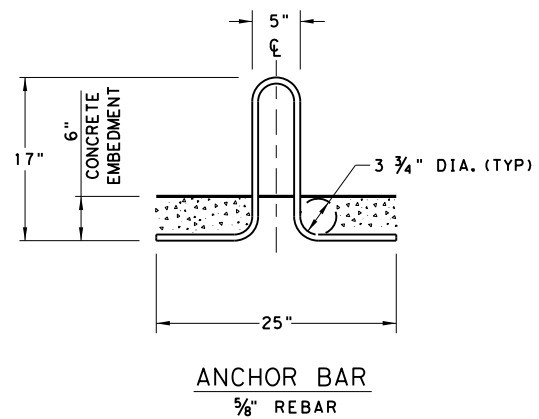
SHEET 1 OF 2

		<i>Design Division Standard</i>	
<b>TRANSITION F-SHAPE TO HEB SINGLE SLOPE CAST-IN-PLACE (RIGID PAVEMENT) TL-3 MASH COMPLIANT FSHEBSS (TR) - 21</b>			
FILE: fshbss+tr21.dgn	DN: TXDOT	CK: KM	DW: AG
© TXDOT: FEBRUARY 2021	CONT	SECT	JOB
REVISIONS		DIST	COUNTY
		SHEET NO.	

STANDARD ANCHORAGE

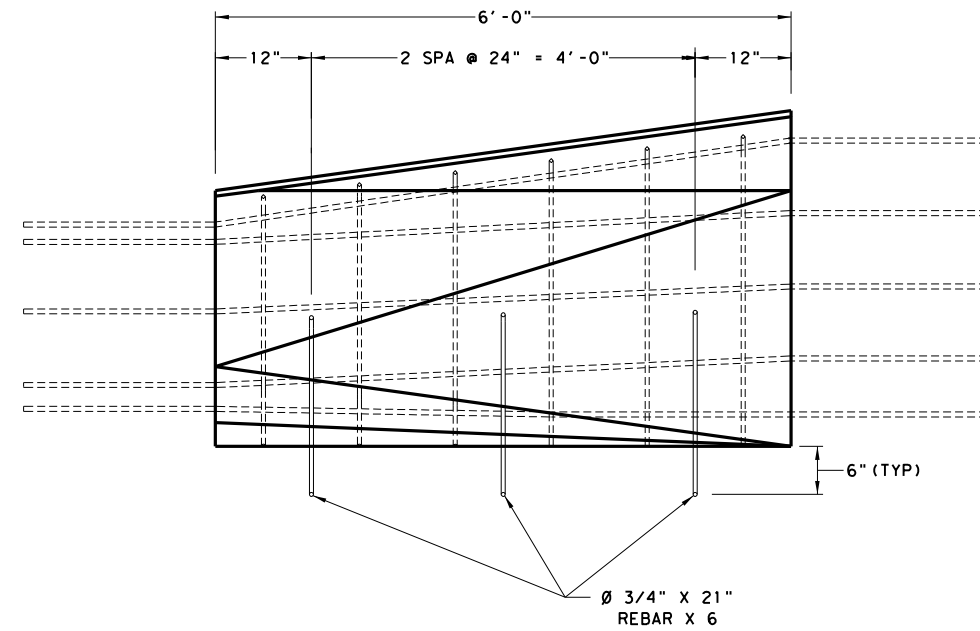


ELEVATION VIEW  
CAST-IN-PLACE ANCHORS

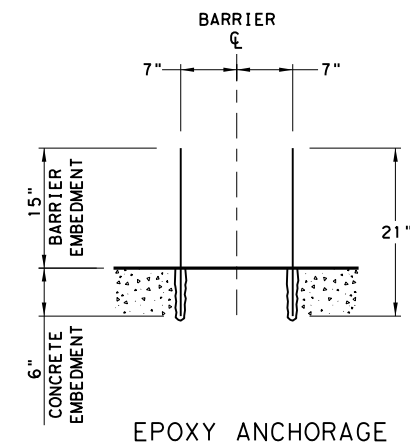


ANCHOR DETAILS

EPOXY OPTION



ELEVATION VIEW  
EPOXY ANCHORS



DISCLAIMER: THIS STANDARD IS COVERED BY THE "TEXAS ENGINEERING PRACTICE ACT". NO WARRANTY OF ANY KIND IS MADE BY TXDOT FOR ANY PURPOSE WHATSOEVER. TXDOT ASSUMES NO RESPONSIBILITY FOR THE CONVERSION OF THIS STANDARD TO OTHER FORMATS OR FOR INCORRECT RESULTS OR DAMAGES RESULTING FROM ITS USE.

DATE:  
FILE:

SHEET 2 OF 2

		<i>Design Division Standard</i>	
<b>TRANSITION F-SHAPE TO HEB SINGLE SLOPE CAST-IN-PLACE (RIGID PAVEMENT) TL-3 MASH COMPLIANT FSHEBSS (TR) - 21</b>			
FILE: fshesstr21.dgn	DN:TxDOT	CK:KM	DW:AG
©TXDOT: FEBRUARY 2021	CONT	SECT	JOB
REVISIONS		HIGHWAY	
DIST	COUNTY	SHEET NO.	