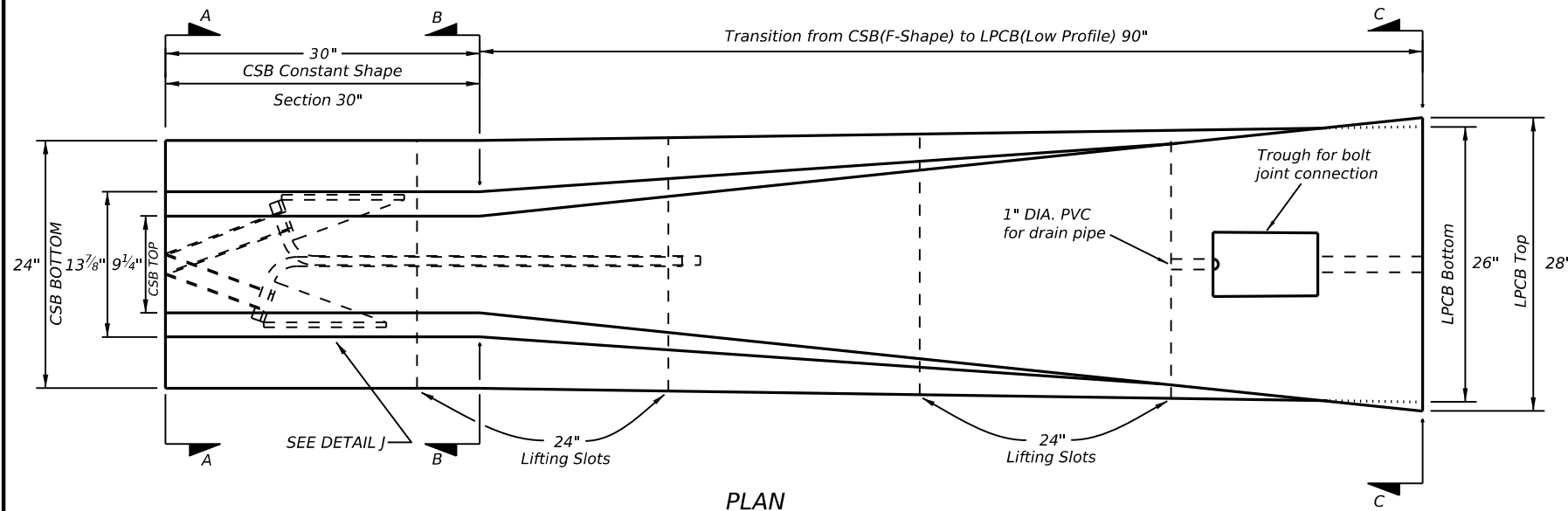
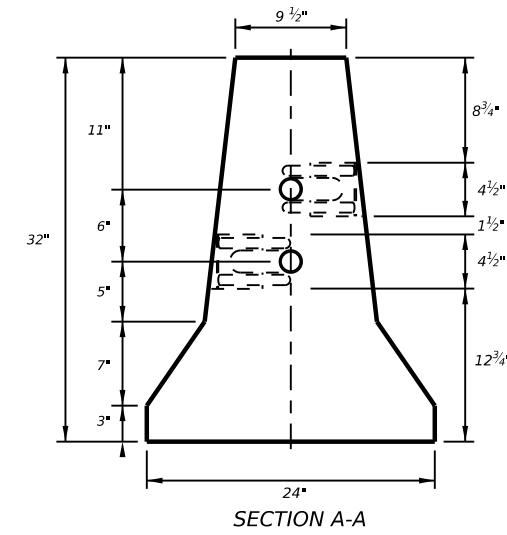


DISCLAIMER: The use of this standard is governed by the "Texas Engineering Practice Act". No warranty of any kind is made by TxDOT for any purpose whatsoever. TxDOT assumes no responsibility for the conversion of this standard to other formats or for incorrect results or damages resulting from its use.

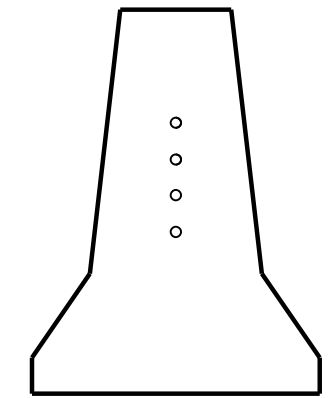


PLAN

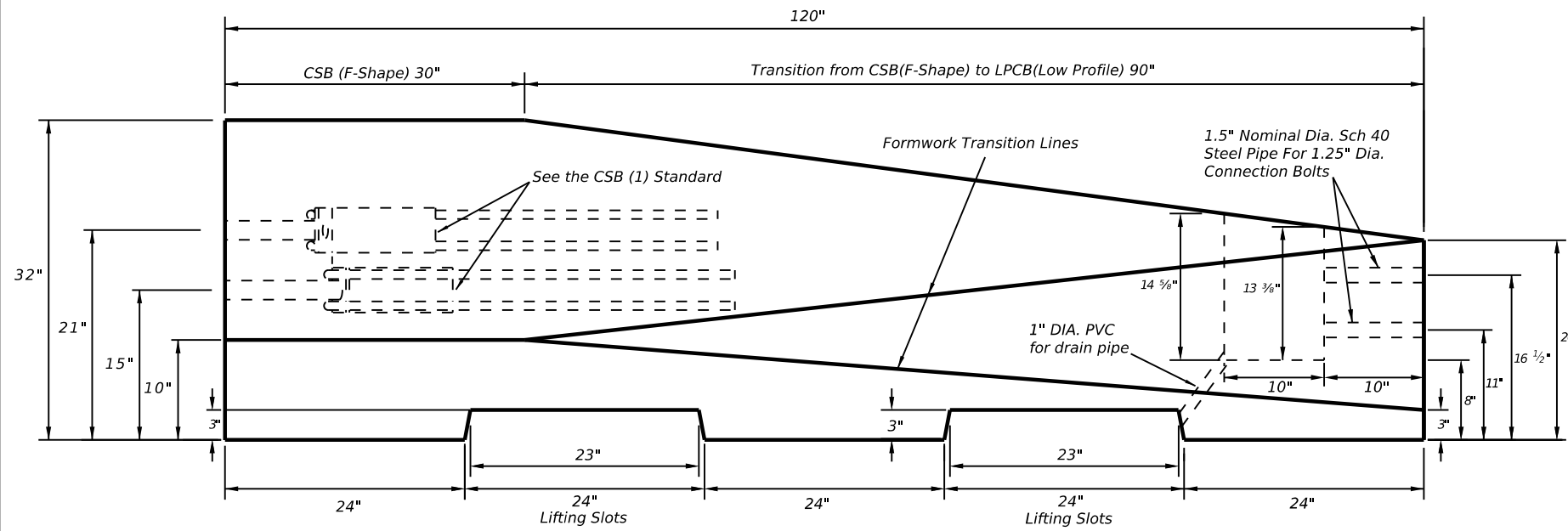
See detail sheet 2 of 2 for reinforcement.



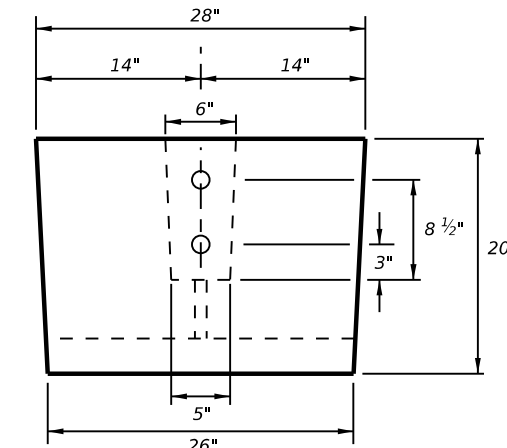
SECTION A-A



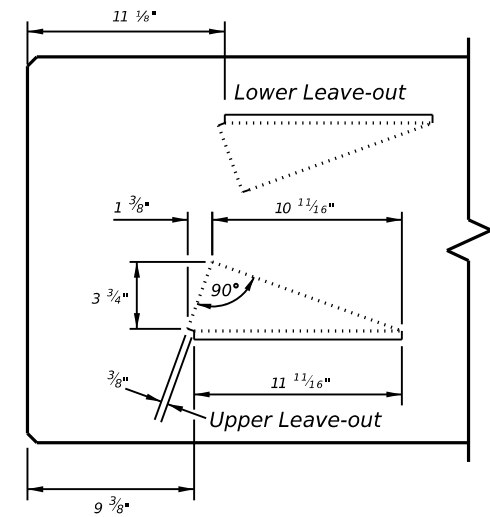
SECTION B-B



ELEVATION



SECTION C-C



DETAIL J
CSB-Side Block-Outs

General Notes

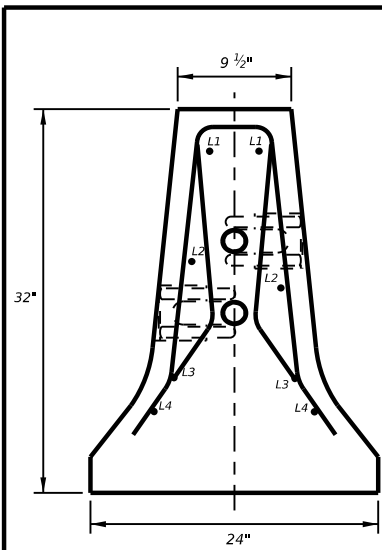
- Concrete shall be Class H for precast barrier with a minimum compressive strength of 3600 psi.
- Where used, rebar reinforcement shall be Grade 60 and conform to ASTM A615.
- These details cover barrier per Item 512, "Portable Concrete Traffic Barrier."
- Barrier edges shall have a 3/4" chamfer or a tooled radius.
- Precast barrier transition length shall be 10 ft.
- Joint connection systems are considered subsidiary.
- All steel assemblies for joint connections shall be galvanized after fabrication in accordance with Item 445, "Galvanizing".
- For rebars, use 2" bending pin unless otherwise shown.

SHEET 1 OF 2

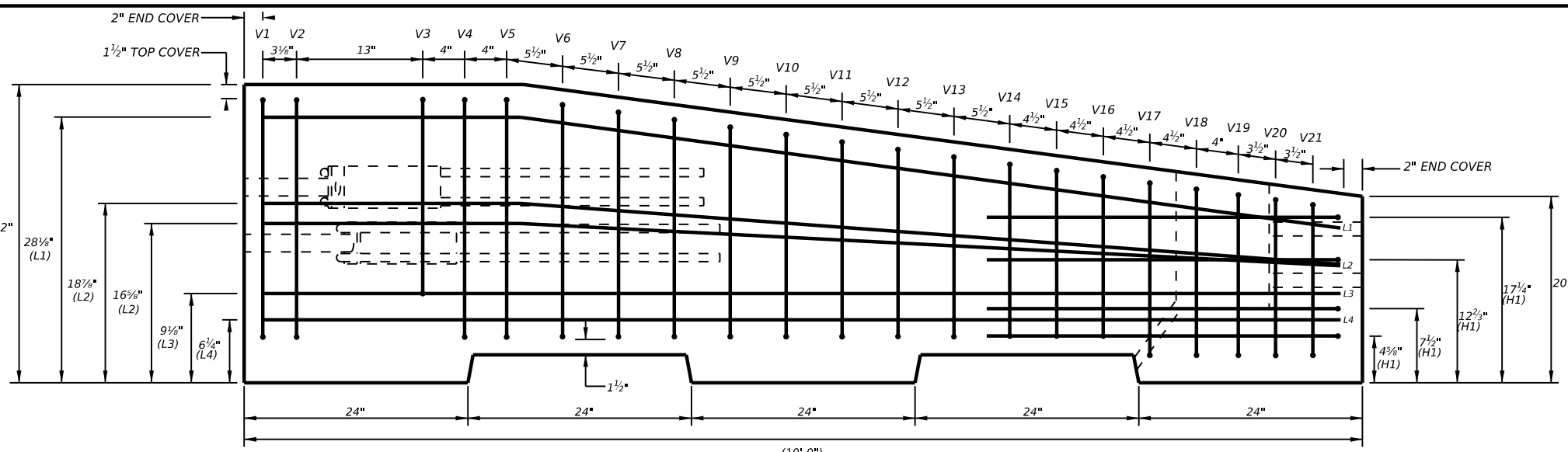
		Design Division Standard	
F-SHAPE TO LOW PROFILE PRECAST BARRIER TRANSITION (TYPE T)			
FSLP (TR) - 10			
FILE: fslptr10.dgn	DN: TxDOT	CK: AM	DW: VP
© TxDOT December 2010	CONT	SECT	JOB
REVISIONS		HIGHWAY	
DIST	COUNTY	SHEET NO.	

DATE:
FILE:

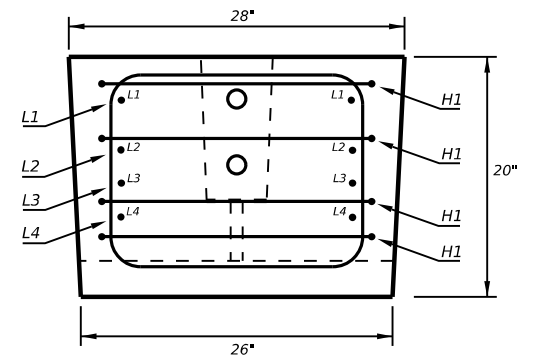
DISCLAIMER: The use of this standard is governed by the "Texas Engineering Practice Act". No warranty of any kind is made by TxDOT for any purpose whatsoever. TxDOT assumes no responsibility for the conversion of this standard to other formats or for incorrect results or damages resulting from its use.



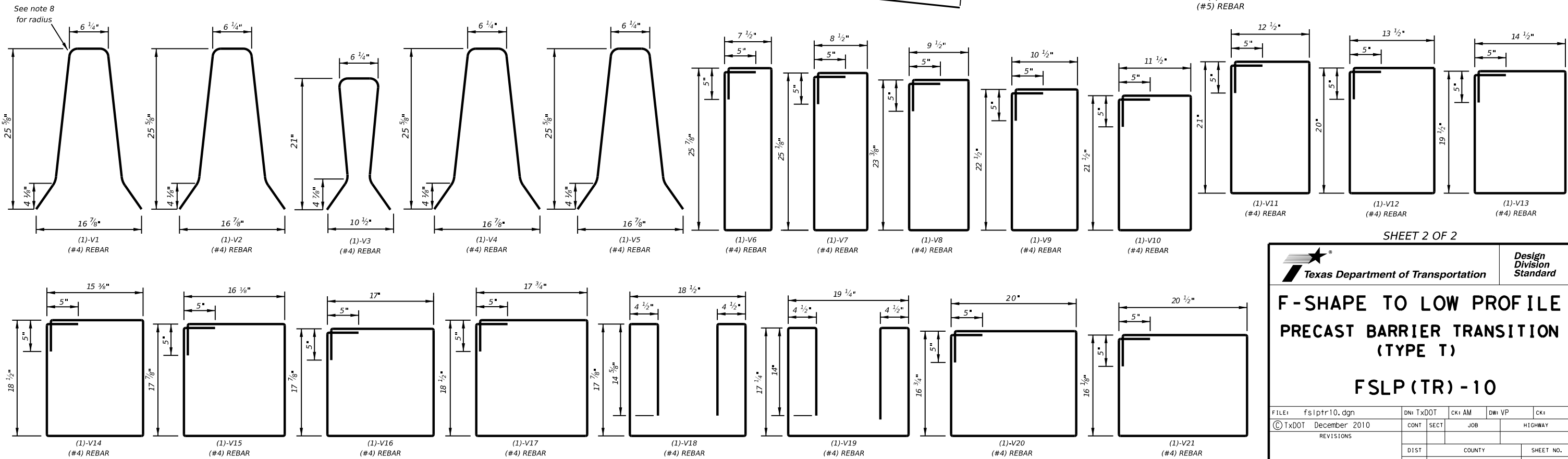
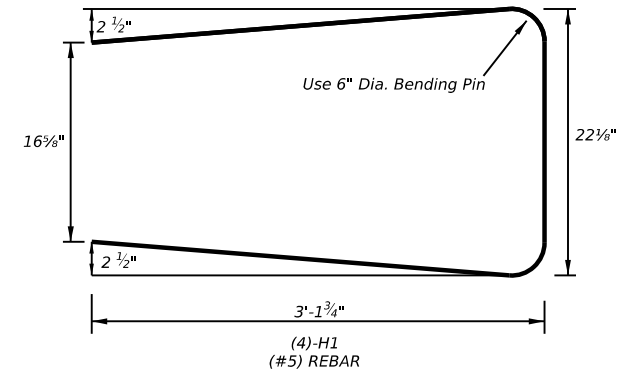
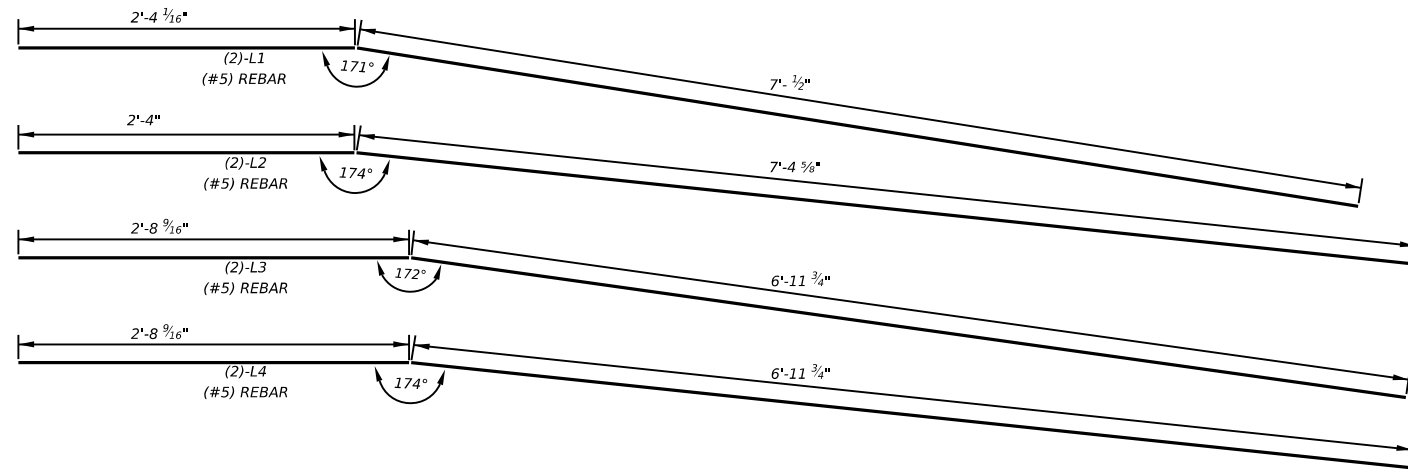
END SECTION AT CSB (F-SHAPE) BARRIER
For Type X Connection
(See the CSB(1) Standard)



BARRIER TRANSITION ELEVATION
Showing Reinforcement Placement



END SECTION AT LOW PROFILE BARRIER
For Connection Details
(See the LPCB Standard)



SHEET 2 OF 2

		Design Division Standard	
F-SHAPE TO LOW PROFILE PRECAST BARRIER TRANSITION (TYPE T)			
FSLP (TR) - 10			
FILE: fslptr10.dgn	DN: TxDOT	CK: AM	DW: VP
© TxDOT December 2010	CONT	SECT	JOB
REVISIONS	DIST		COUNTY
			SHEET NO.

DATE: FILE: