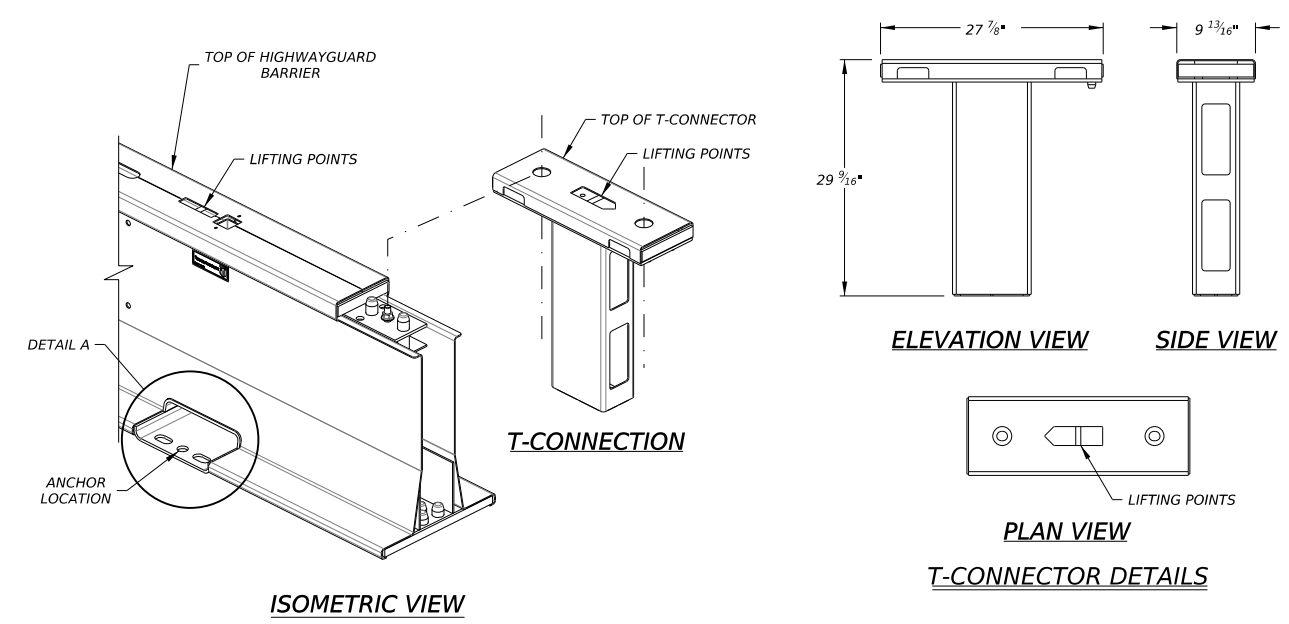
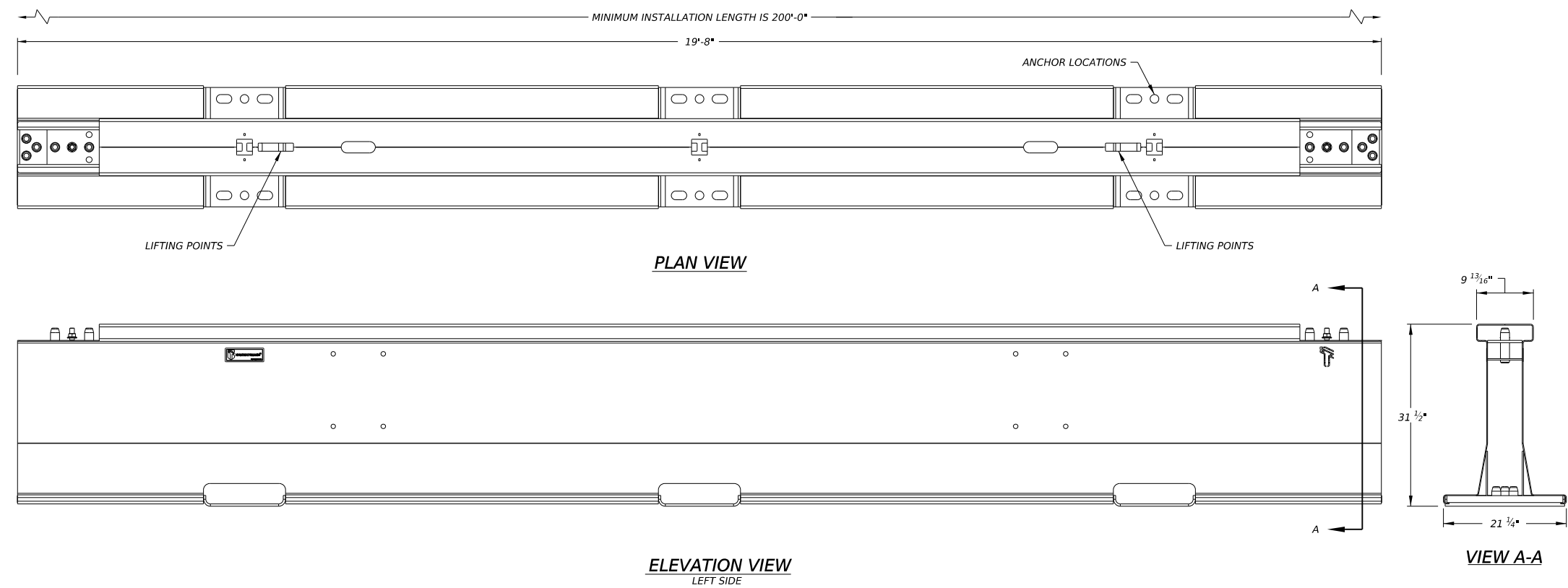
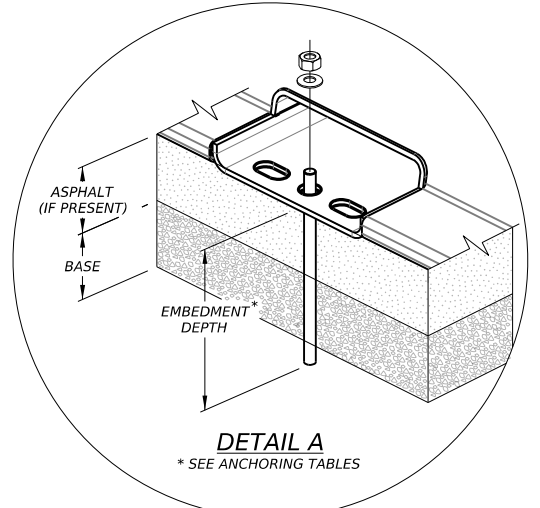


DISCLAIMER: The use of this standard is governed by the "Texas Engineering Practice Act". No warranty of any kind is made by TxDOT for any purpose whatsoever. TxDOT assumes no responsibility for the conversion of this standard to other formats or for incorrect results or damages resulting from its use.



METHOD	DESCRIPTION	APPROX. RADIUS (FT)
1	20FT BARRIER SECTION WITH STANDARD T-CONNECTIONS AT MAXIMUM ANGLE	581
2	20FT BARRIER SECTION WITH 2.5° T-CONNECTION	460
3	20FT BARRIER SECTION WITH 5° T-CONNECTION	230
4	20FT BARRIER SECTION WITH 10° T-CONNECTION	115
5	20FT BARRIER SECTION WITH 10° BARRIER SECTION AND STANDARD T-CONNECTION	135
6	10° BARRIER SECTION WITH STANDARD T-CONNECTIONS	22
7	10° BARRIER SECTION WITH 10° T-SECTION	12

\* SEE PRODUCT MANUAL OR CONTACT HIGHWAY CARE LTD. FOR MORE INFORMATION ON ANGLE T-CONNECTORS



	ANCHOR OPTIONS	ANCHOR LENGTH	EMBEDMENT DEPTH (MIN.)	DRILL DIAMETER
1	1" GALV. RESIN THREADED ANCHOR (WITH 1" GALV. WASHER & NUT)	1'-1"	11 3/4"	1 1/8"
2	1 3/16" GALV. DROP IN PIN (NOT DRIVEN PIN)	1'-2 3/8"	1'-1 3/4"	1 1/4"
3	1" GALV. RESIN THREADED ANCHOR (WITH 1" GALV. WASHER & NUT)	1'-6"	1'-4 1/2"	1 1/4"
4	1" GALV. CHEMICAL THREADED "LEFTY" KELKEN REMOVABLE ANCHOR (WITH 1" GALV. WASHER & NUT)	NA	1'-0"	1 1/4"

\*\* 2" MIN. ASPHALT DEPTH ABOVE AN APPROPRIATELY COMPACTED DGA SUBBASE AND 2" MIN. ASPHALT DEPTH ABOVE A MIN. OF 6" REINFORCED CONCRETE SUBBASE.

NOTE: ANCHORS ARE TO BE POSITIONED A MINIMUM OF 5 3/4" AWAY FROM THE EDGE OF AN EXCAVATION FOR RESIN ANCHORS OR 7 3/4" FOR DROP IN PINS.

	ANCHOR OPTIONS	ANCHOR LENGTH	EMBEDMENT DEPTH (MIN.)	DRILL DIAMETER
1	1" GALV. RESIN THREADED ANCHOR (WITH 1" GALV. WASHER & NUT)	9"	6"	1 1/8"
2	1" HILTI HSL-3 MECHANICAL ANCHOR	9 1/4"	****	****
3	1" GALV. CHEMICAL THREADED "LEFTY" KELKEN REMOVABLE ANCHOR (WITH 1" GALV. WASHER & NUT)	NA	6"	1 1/4"
4	1 3/16" GALV. DROP IN PIN (NOT DRIVEN PIN)	1'-2 3/8"	1'-1 3/4"	1 1/4"

\*\*\* 7 7/8" MINIMUM REINFORCED CONCRETE DEPTH. 10" MINIMUM UNREINFORCED CONCRETE DEPTH. \*\*\* CONTACT: HIGHWAY CARE LTD. FOR SPECIFIC APPLICATION.

NOTE: ANCHORS ARE TO BE POSITIONED A MINIMUM OF 11 7/8" FROM THE EDGE OF THE CONCRETE PAD.

**GENERAL NOTES**

- THE SYSTEM SHOWN ON THIS DRAWING IS A PROPRIETARY BARRIER TRADED AS HIGHWAYGUARD AND HIGHWAYGUARD LDS AND HAS BEEN DESIGNED AND MANUFACTURED BY HIGHWAY CARE LTD. FOR TECHNICAL ASSISTANCE AND APPLICATION SUPPORT CONTACT AT (888) 323-6374 OR [engineering@highwaycare.com](mailto:engineering@highwaycare.com)
- THE HIGHWAYGUARD HAS BEEN CRASH TESTED TO MASH AND HAS FHWA APPROVAL AS A TL-3 & TL-4 BARRIER. THE DEFLECTION TABLE OUTLINES BASIC SYSTEM PERFORMANCE AND COMPONENT ANCHORING REQUIREMENTS.
- THIS DRAWING PACKAGE PROVIDES THE RELEVANT INFORMATION AND GENERAL GRAPHICS REQUIRED TO IDENTIFY THE COMPONENT PARTS OF HIGHWAYGUARD AND THEIR INCORPORATION AS A WHOLE SYSTEM FOR DEPARTMENTAL STANDARD APPLICATIONS.
- INSTALLATION OF HIGHWAYGUARD BARRIER OR HIGHWAYGUARD LDS BARRIER, NORMALLY STARTS WITH AN END CAP THAT MUST BE PROTECTED WITH A SUITABLE CRASH CUSHION END TREATMENT IF EXPOSED TO ONCOMING TRAFFIC. THE CRASH CUSHION CONNECTIONS ARE NOT DETAILED WITHIN THESE DRAWINGS, PLEASE CONTACT HIGHWAY CARE LTD. FOR MORE DETAILS.
- THE FULL HEIGHT OF HIGHWAYGUARD BARRIER 20FT SEGMENT IS 31.5". EACH SEGMENT IS LOWERED INTO POSITION WITH THE T-CONNECTION ALREADY ATTACHED TO THE END OF THE BARRIER THAT IS BEING JOINED TO THE RUN OF BARRIER. ENSURE ORIENTATION OF T-CONNECTOR ALLOWS ALIGNMENT PINS TO BE LOWERED ONTO NEXT SECTION. THE T-CONNECTOR ALLOWS THE BARRIER FOR ADJUSTMENTS, QUICK INSTALLATION, QUICK REMOVAL AND REPLACEMENT OF DAMAGED BARRIERS. MINIMUM INSTALLATION LENGTH OF HIGHWAYGUARD BARRIER IS 200'-0".
- THERE ARE SEVERAL METHODS OF ACHIEVING RADIUS IN A LENGTH OF HIGHWAYGUARD BARRIER. RADIUS CAN BE ACHIEVED USING VARIOUS T-CONNECTORS AND THUS ALLOWING THE HIGHWAYGUARD BARRIER TO FOLLOW THE DESIRED CURVATURE IN THE INSTALLATION, THESE TYPE OF T-CONNECTORS ARE, 2.5°, 5° AND 10° ANGLES. FOR FURTHER INFORMATION AND ADVICE CONTACT HIGHWAY CARE LTD.
- USING HIGHWAYGUARD BARRIER OR HIGHWAYGUARD BARRIER LDS ON BRIDGE STRUCTURES, POSSIBLE ANCHORING SHOULD TAKE PLACE OFF BRIDGE DECKS. ANY ANCHORING ON BRIDGE DECKS NEEDS TO BE AGREED IN ADVANCE WITH THE TECHNICAL EXPERT RESPONSIBLE FOR THE BRIDGE TO ENSURE IT IS NOT DAMAGED. IF ANCHORING EITHER SIDE OF A BRIDGE DECK EXPANSION JOINT, THEN THIS MOVEMENT MUST BE MIRRORED IN THE BARRIER. FOR FURTHER INFORMATION AND ADVICE CONTACT HIGHWAY CARE LTD.
- THE HIGHWAYGUARD BARRIER SECTIONS CAN BE EQUIPPED WITH OPTIONAL WHEELSETS THAT ALLOW THE BARRIERS TO BE MANEUVERED WITHOUT LIFTING THE MACHINERY/ EQUIPMENT SUCH AS INSTALLING IN TUNNELS OR AREAS WITH OVERHEAD RESTRICTIONS. THE WHEELSETS CAN BE RAISED AND LOWERED FROM THE TOP OF THE BARRIER USING A MANUAL WRENCH AND 1" SOCKET.
- THE HIGHWAYGUARD BARRIER HAS BEEN MASH TESTED, USING 1 3/16" DIA. DROP IN PIN ANCHORS AND EMBEDDED 1'-6" INTO ASPHALT. ALTERNATIVE GROUND EMBEDMENT CONDITIONS MAY BE ACCEPTABLE BUT MIGHT REQUIRE DIFFERENT ANCHOR SOLUTIONS, PLEASE CONTACT HIGHWAY CARE LTD. FOR FURTHER INFORMATION.
- ALL COMPONENTS ARE FULLY GALVANIZED.
- HIGHWAYGUARD BARRIER SYSTEMS SHALL BE ASSEMBLED AND INSTALLED IN ACCORDANCE WITH THE MANUFACTURERS DETAILED DRAWINGS, PROCEDURES AND SPECIFICATIONS. FOR ANY INSTALLATIONS OUTSIDE OF THE SCOPE OF THESE DRAWINGS, PLEASE CONTACT HIGHWAY CARE LTD. FOR DETAILS.
- FOR ANCHORING LAYOUTS FOR HIGHWAYGUARD AND HIGHWAYGUARD LDS, PLEASE SEE MANUFACTURER'S PRODUCT MANUAL OR CONTACT HIGHWAY CARE LTD. FOR INFORMATION.

	STANDARD SYSTEM	MINIMUM DEFLECTION SYSTEMS (LDS)
DESCRIPTION	ONLY ANCHORED AT THE FIRST AND ENDS OF THE BARRIER LENGTH	ANCHORS ARE STAGGERED EVERY 39'-4 1/2"
DEFLECTION AT MASH TL-3	64"	2'-3"
DEFLECTION AT MASH TL-4	71"	2'-7"

NOTE: SEE PRODUCT MANUAL OR CONTACT HIGHWAY CARE LTD. FOR MORE INFORMATION ON ANCHOR REQUIREMENTS FOR THE LENGTH OF BARRIER.

**Texas Department of Transportation** Design Division Standard

## HIGHWAYGUARD SYSTEM

### STEEL BARRIER

### MASH TL-3 & TL-4

### HIGHWAYGUARD-21

FILE: highwayguard21.dgn	DN: TxDOT	CK: KM	DW: SS	CK: XX
© TxDOT: JULY 2021	CONT	SECT	JOB	HIGHWAY
REVISIONS	DIST	COUNTY	SHEET NO.	

DATE: FILE: