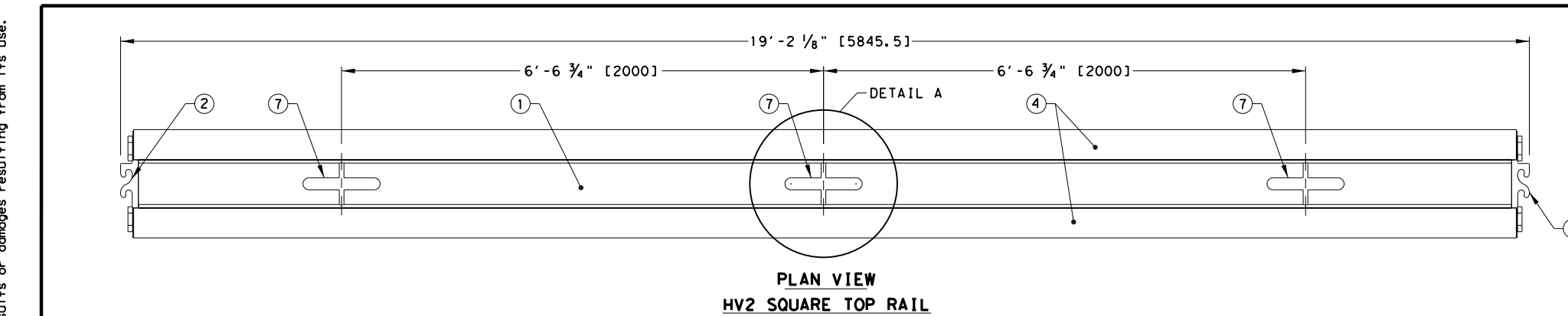
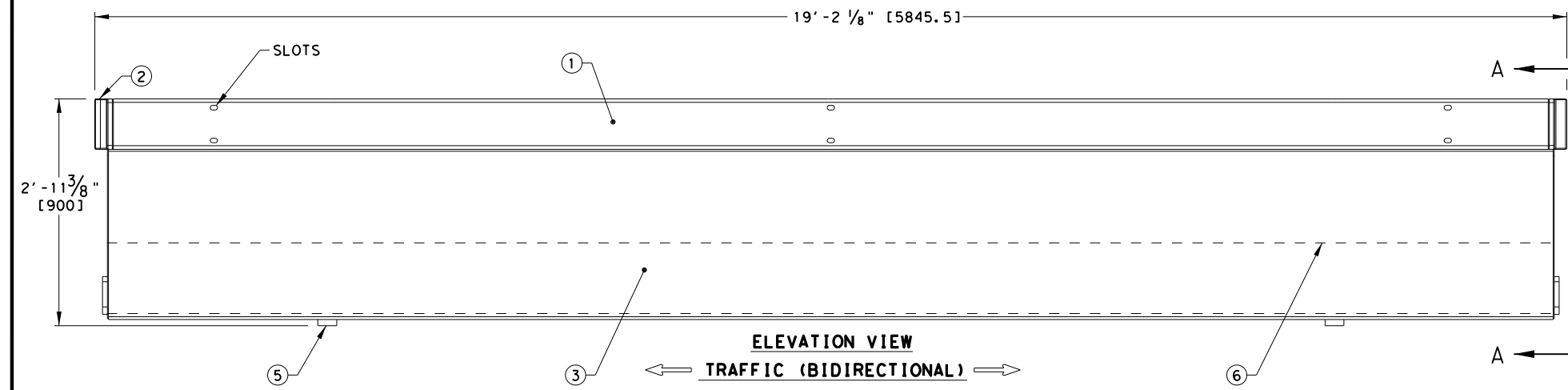


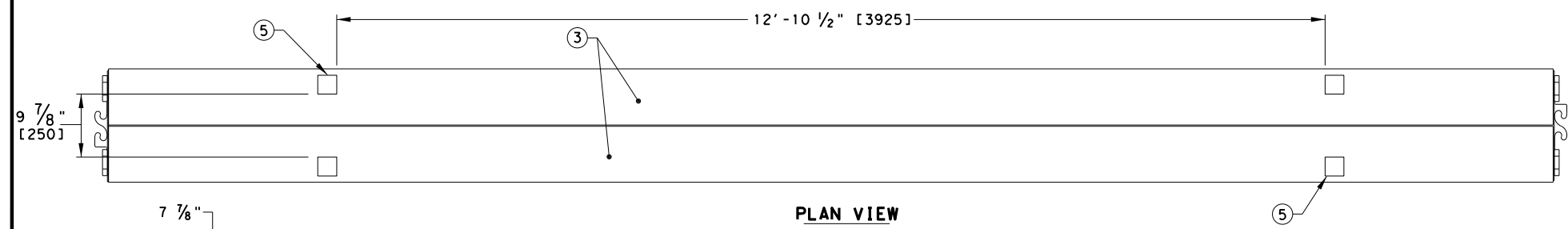
DISCLAIMER: This standard is governed by the "Texas Engineering Practice Act". No warranty of any kind is made by TxDOT for any purpose whatsoever. TxDOT assumes no responsibility for the conversion of this standard to other formats or for incorrect results or damages resulting from its use.



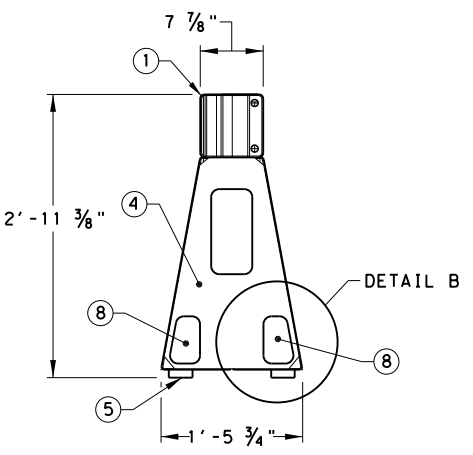
**PLAN VIEW
HV2 SQUARE TOP RAIL**



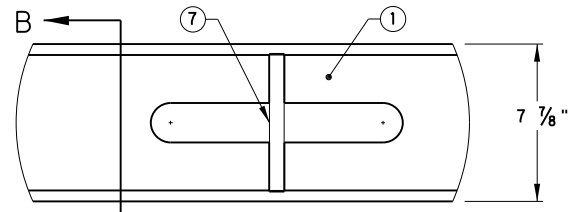
**ELEVATION VIEW
TRAFFIC (BIDIRECTIONAL)**



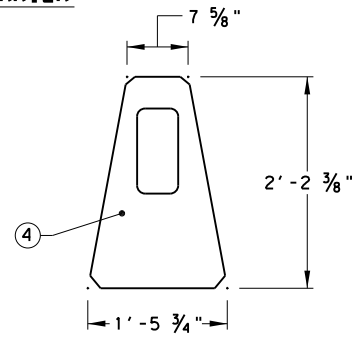
**PLAN VIEW
BOTTOM VIEW OF HV2 BARRIER**



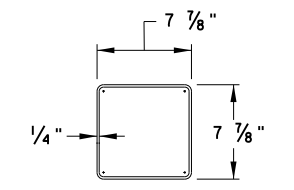
**VIEW A-A
SCALE 1:25**



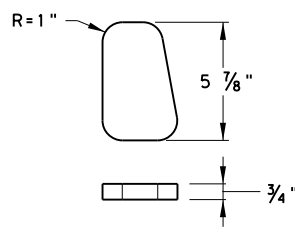
**DETAIL A
HV2 LIFTING BAR
SCALE 1:20**



**HV2 END
SCALE 1:25**

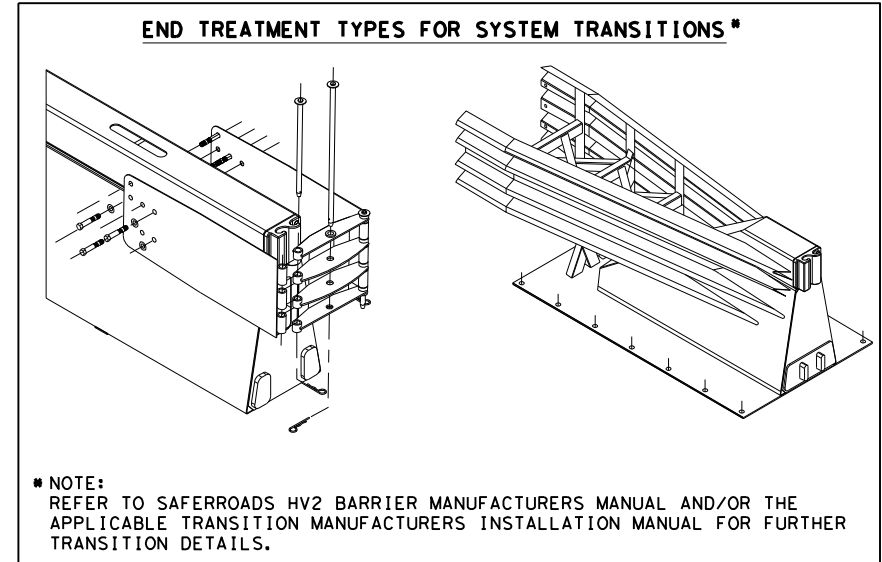


**VIEW B-B
HV2 SQUARE TOP RAIL
SCALE 1:10**



**DETAIL B
HV2 SPACER
SCALE 1:5**

ITEM NO.	PART NUMBER	DESCRIPTION
①	SRP000036	HV2 SQUARE TOP RAIL
②	SRP000037	CONNECTOR
③	SRP000038	HV2 SKIN
④	SRP000039	HV2 END
⑤	SRP000040	HV2 FEET
⑥	SRP000041	CONCRETE BALLAST
⑦	SRP000043	HV2 LIFTING BAR
⑧	SRP000048	HV2 SPACER



NOTE: THIS STANDARD IS A BASIC REPRESENTATION OF THE SAFERROADS HV2 BARRIER, IT IS NOT INTENDED TO REPLACE THE INSTALLATION INSTRUCTIONS MANUAL.

GENERAL NOTES

- FOR TECHNICAL AND APPLICATION SUPPORT PLEASE CONTACT SAFERROADS PTY, LTD, AT (859)469-0364, WEBSITE: www.saferoads.com.au OR www.hv2barrier.com.
- HV2 BARRIER HAS BEEN ACCEPTED BY FHWA AS A MASH TL-4 LONGITUDINAL BARRIER.
- STANDARD INSTALLATIONS IS A FREE STANDING TEMPORARY LONGITUDINAL BARRIER SYSTEM. HIGH CONTAINMENT AND LOW DEFLECTION INSTALLATIONS REQUIRE NO ANCHORING. NO MODIFICATIONS ARE NECESSARY OTHER THAN FAST DEPLOYMENT AND RETRIEVAL.
- OVERALL LENGTH PER BARRIER IS 19.2FT. AND WEIGHS 4,600LBS EACH. HV2 SAFETY BARRIER CAN BE DEPLOYED ON A HORIZONTAL RADIUS AS TIGHT AS 255.9FT/78M. HV2 SAFETY BARRIER INSTALLATIONS REQUIRE A MIN. DEPLOYMENT LENGTH OF 323.5FT/98.6M (17NO. HV2 BARRIERS) PLUS THE REQUIRED END TREATMENTS, TO SAFELY CONTAIN AND REDIRECT AT MASH TL3.
- SAFERROADS HV2 SAFETY BARRIER SHOULD NOT BE INSTALLED IF THERE IS:
 - CURVATURE TIGHTER THAN 262 FT (80m) RADIUS.
 - CROSS SLOPE STEEPER THAN 5%.
 - LONGITUDINAL SLOPE STEEPER THAN 5%.
 - CREST SHARPER THAN 5%.
 - DITCH SHARPER THAN 5%.
 - CURBS OR SIMILAR OBSTACLES RESTRICTING DEFLECTION.
- SAFERROADS HV2 SAFETY BARRIER COMPONENTS ARE MANUFACTURED IN SI [METRIC] UNITS. ENGLISH UNITS SHOWN ARE APPROXIMATE. ALL COMPONENTS ARE CONSTRUCTED FROM STEEL WITH CONCRETE BALLASTING.
- WHEN TAPERING HV2 SAFETY BARRIER OUTSIDE THE CLEAR ZONE, THE LENGTH OF NEED BEGINS AND ENDS 74FT/22.5M FROM THE ENDS OF THE SYSTEM FOR A MASH TL-3 DEPLOYMENT AND 164FT/50M FROM THE ENDS OF THE SYSTEM FOR A MASH TL-4 DEPLOYMENT.

SPEED	25°	20°	15°	10°	5°
62MPH	4'-10" [1.47]	3'-11" [1.18]	2'-11" [0.88]	2'-0" [0.59]	1'-0" [0.30]
56MPH	4'-5" [1.33]	3'-7" [1.07]	2'-8" [0.80]	1'-10" [0.54]	11" [0.27]
50MPH	3'-11" [1.18]	3'-2" [0.95]	2'-4" [0.71]	1'-7" [0.48]	10" [0.24]
43MPH	3'-5" [1.03]	2'-9" [0.83]	2'-1" [0.62]	1'-5" [0.42]	9" [0.21]
37MPH	2'-11" [0.89]	2'-4" [0.71]	1'-9" [0.53]	1'-3" [0.36]	8" [0.18]
31MPH	2'-6" [0.74]	2'-0" [0.59]	1'-6" [0.44]	1'-0" [0.30]	6" [0.15]
25MPH	2'-0" [0.59]	1'-7" [0.48]	1'-3" [0.36]	10" [0.24]	5" [0.12]

SPEED	15°	10°	5°
56MPH	7'-10" [2.37]	5'-3" [1.58]	2'-8" [0.79]
50MPH	7'-0" [2.11]	4'-8" [1.41]	2'-4" [0.71]
43MPH	6'-1" [1.85]	4'-1" [1.23]	2'-1" [0.62]
37MPH	5'-3" [1.58]	3'-6" [1.06]	1'-9" [0.53]
31MPH	4'-4" [1.32]	2'-11" [0.88]	1'-6" [0.44]
25MPH	3'-6" [1.06]	2'-4" [0.71]	1'-2" [0.35]

Texas Department of Transportation
Design Division Standard

SAFERROADS HV2 SAFETY STEEL BARRIER MASH TL-4 HV2 BARRIER-21

FILE: hv2barrier21.dgn DNE: TxDOT CK: KM DW: SS CK: AG
 © TxDOT: JULY 2021 CONT: SECT: JOB: HIGHWAY: REVISIONS: DIST: COUNTY: SHEET NO.

DATE: FILE: