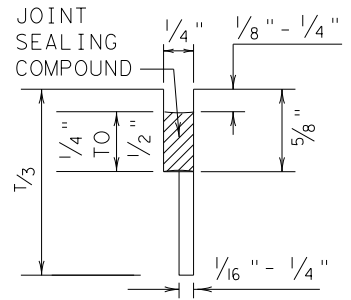
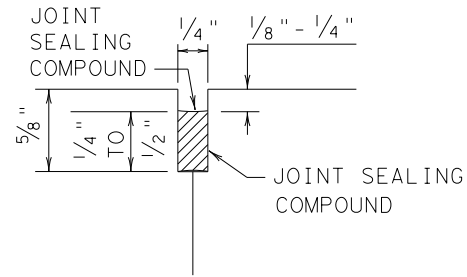


DISCLAIMER: The use of this standard is governed by the "Texas Engineering Practice Act". No warranty of any kind is made by TxDOT for any purpose whatsoever. TxDOT assumes no responsibility for the conversion of this standard to other formats or for incorrect results or damages resulting from its use.

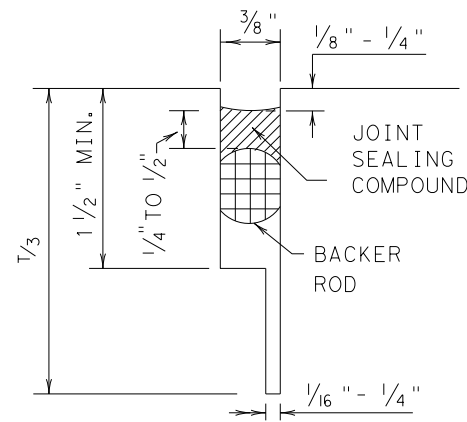
METHOD B: JOINT SEALING COMPOUND



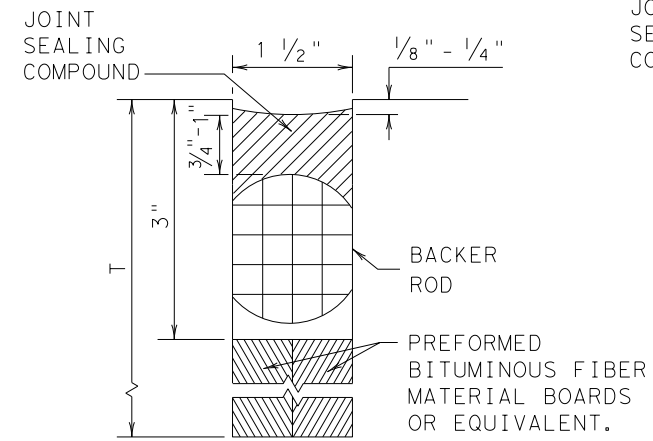
LONGITUDINAL SAWED CONTRACTION JOINT



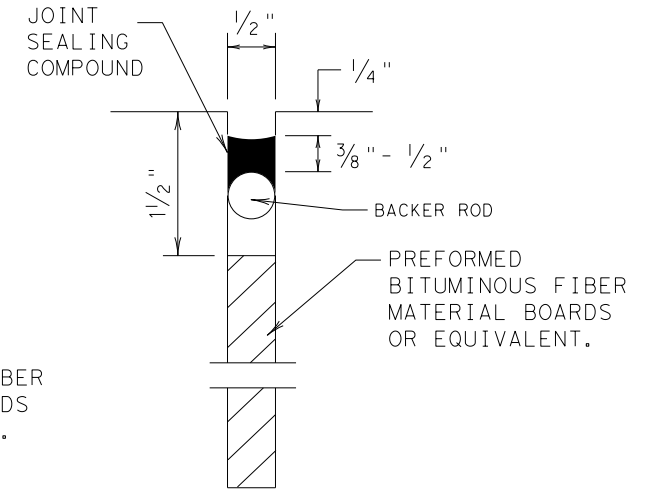
LONGITUDINAL OR TRANSVERSE CONSTRUCTION JOINT



TRANSVERSE SAWED CONTRACTION JOINT

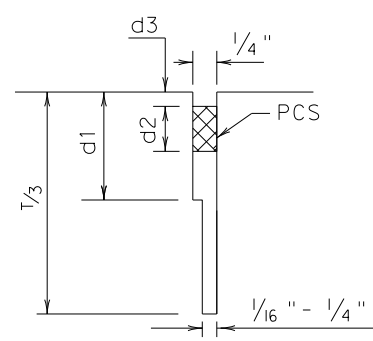


TRANSVERSE FORMED EXPANSION JOINT

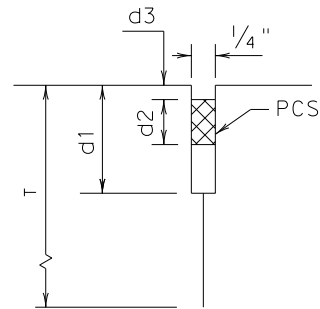


FORMED ISOLATION JOINT

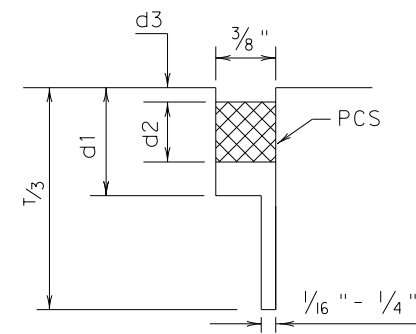
METHOD A: PREFORMED COMPRESSION SEALS (PCS) (DMS-6310 CLASS 6)



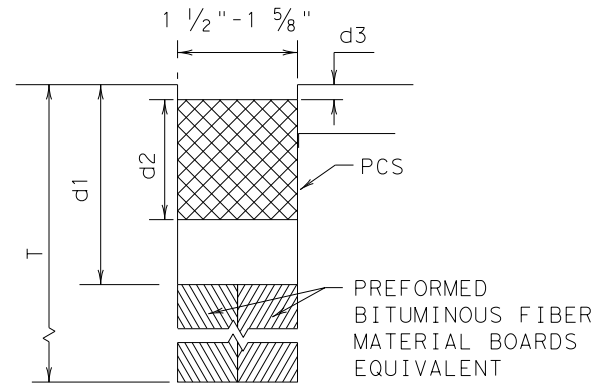
LONGITUDINAL SAWED CONTRACTION JOINT



LONGITUDINAL CONSTRUCTION JOINT



TRANSVERSE SAWED CONTRACTION JOINT



TRANSVERSE FORMED EXPANSION JOINT

GENERAL NOTES

- UNLESS OTHERWISE SHOWN IN THE PLANS, EITHER METHOD "A" OR METHOD "B" MAY BE USED.
- THE LOCATION OF JOINTS SHALL BE AS SHOWN ELSEWHERE IN THE PLANS.
- THE JOINT RESERVOIR FOR SEALANT OR PCS SHALL BE SAWED UNLESS OTHERWISE SHOWN ON THE PLANS FOR THE LONGITUDINAL AND TRANSVERSE CONSTRUCTION JOINTS AND THE SAWED JOINTS.
- DIMENSIONS d1, d2, AND d3 SHOWN IN METHOD A SHALL BE IN ACCORDANCE WITH THE PREFORMED COMPRESSION SEAL MANUFACTURER'S RECOMMENDATION.
- REFER TO DMS-6310 "JOINT SEALANTS AND FILLERS" FOR THE CLASSIFICATIONS.
- FOR SAWED LONGITUDINAL JOINT, LONGITUDINAL OR TRANSVERSE CONSTRUCTION JOINT, USE JOINT SEALANT CLASS 5 OR 8 UNLESS OTHERWISE SHOWN ON THE PLAN OR APPROVED.
- FOR TRANSVERSE SAWED CONTRACTION, TRANSVERSE FORMED EXPANSION JOINT, AND ISOLATION JOINT USE JOINT SEALANT CLASS 5 OR 8 AT NEW JOINTS. USE JOINT SEALANT CLASS 4,5,7,OR 8 FOR MAINTAINING EXISTING JOINTS.
- THE JOINTS SHALL BE CLEANED IN ACCORDANCE WITH THE ITEM 438 "CLEANING AND SEALING JOINTS" OR ITEM 713 "CLEANING AND SEALING JOINTS AND CRACKS (CONCRETE PAVEMENT)".
- ISOLATION JOINTS ACCOMMODATE HORIZONTAL AND VERTICAL MOVEMENTS THAT OCCUR BETWEEN A PAVEMENT AND A STRUCTURE. ISOLATION JOINTS MAY BE USED FOR BRIDGE ABUTMENTS, INTERSECTIONS, CURB AND GUTTER, OLD AND NEW PAVEMENTS, OR AROUND DRAINAGE INLETS, MANHOLES, FOOTINGS AND LIGHTING STRUCTURES.

DATE:
FILE:

		Design Division Standard	
CONCRETE PAVING DETAILS JOINT SEALS JS-14			
FILE: js14.dgn	DN: TxDOT	DN: HC	CK: AN
© TxDOT: DECEMBER 2014	CONT	SECT	HIGHWAY
REVISIONS			
DIST	COUNTY	SHEET NO.	