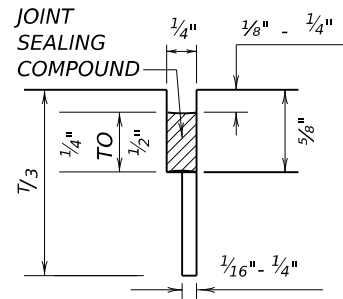
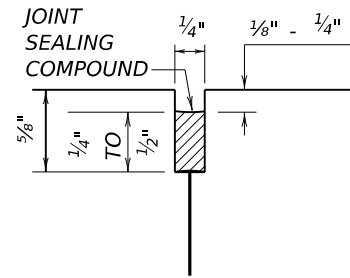


DISCLAIMER:
The use of this standard is governed by the "Texas Engineering Practice Act". No warranty of any kind is made by TxDOT for any purpose whatsoever. TxDOT assumes no responsibility for the conversion of this standard to other formats or for incorrect results or damages resulting from its use.

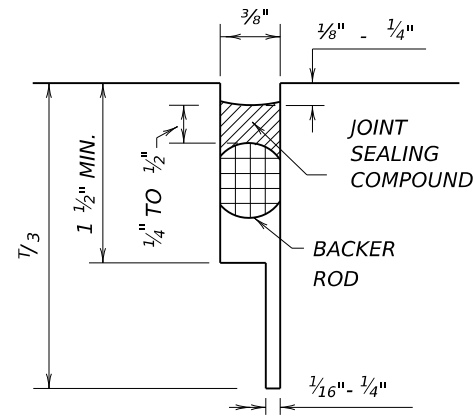
METHOD B: JOINT SEALING COMPOUND



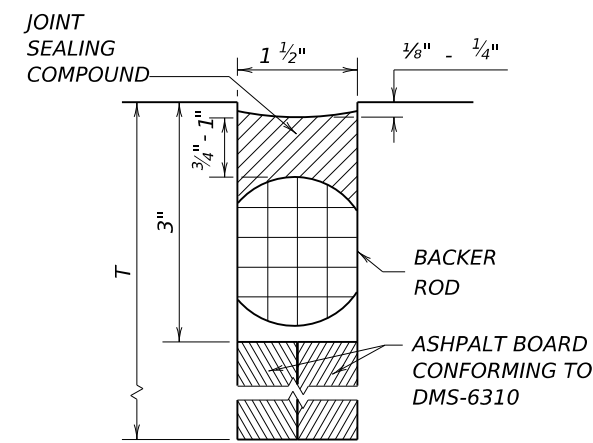
LONGITUDINAL SAWED
CONTRACTION JOINT



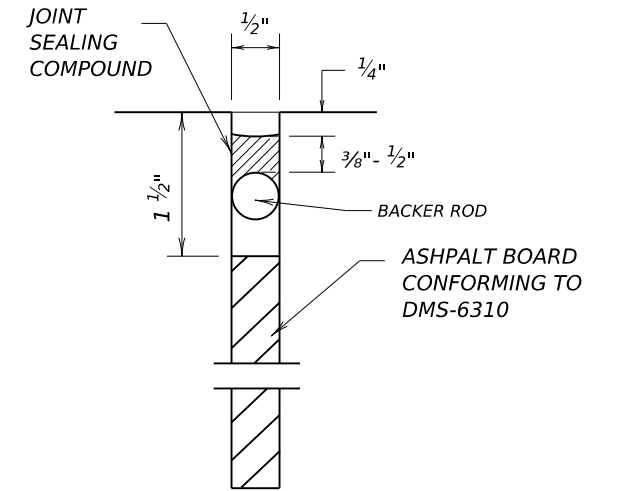
LONGITUDINAL OR TRANSVERSE
CONSTRUCTION JOINT



TRANSVERSE SAWED
CONTRACTION JOINT

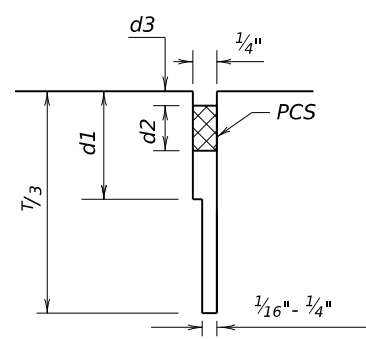


TRANSVERSE FORMED
EXPANSION JOINT

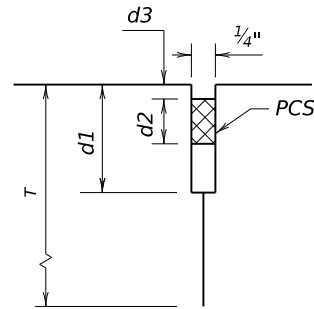


FORMED
ISOLATION JOINT

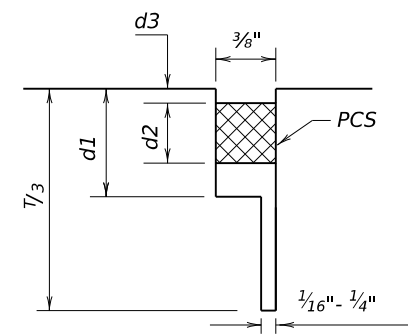
METHOD A: PREFORMED COMPRESSION SEALS (PCS)(DMS-6310 CLASS 6)



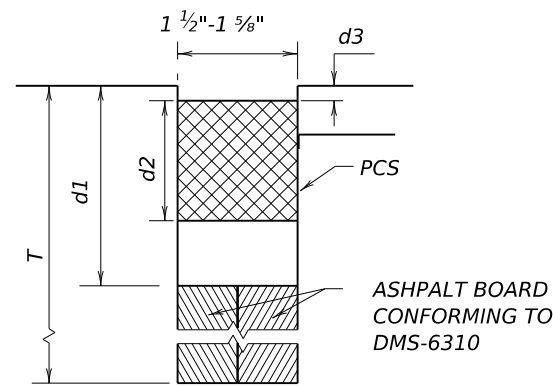
LONGITUDINAL SAWED
CONTRACTION JOINT



LONGITUDINAL OR TRANSVERSE
CONSTRUCTION JOINT



TRANSVERSE SAWED
CONTRACTION JOINT



TRANSVERSE FORMED
EXPANSION JOINT

GENERAL NOTES

1. UNLESS OTHERWISE SHOWN IN THE PLANS, EITHER METHOD "A" OR METHOD "B" MAY BE USED.
2. THE LOCATION OF JOINTS SHALL BE AS SHOWN ELSEWHERE IN THE PLANS.
3. THE JOINT RESERVOIR FOR SEALANT OR PCS SHALL BE SAWED UNLESS OTHERWISE SHOWN ON THE PLANS FOR THE LONGITUDINAL AND TRANSVERSE CONSTRUCTION JOINTS AND THE SAWED JOINTS.
4. DIMENSIONS $d1$, $d2$, AND $d3$ SHOWN IN METHOD A SHALL BE IN ACCORDANCE WITH THE PREFORMED COMPRESSION SEAL MANUFACTURER'S RECOMMENDATION.
5. REFER TO DMS-6310 "JOINT SEALANTS AND FILLERS" FOR SEALANT CLASSIFICATIONS.
6. FOR ALL METHOD "B" JOINTS, USE JOINT SEALANT CLASS 5 OR 8 UNLESS OTHERWISE SHOWN ON THE PLAN OR APPROVED AT NEW JOINTS.
7. USE JOINT SEALANT CLASS 5 OR 8 AT NEW JOINTS. USE JOINT SEALANT CLASS 4,5,7, OR 8 FOR MAINTANING EXISTING JOINTS.
8. THE JOINTS SHALL BE CLEANED IN ACCORDANCE WITH THE ITEM 438 "CLEANING AND SEALING JOINTS" OR ITEM 713 "CLEANING AND SEALING JOINTS AND CRACKS (CONCRETE PAVEMENT)".



CONCRETE PAVING DETAILS JOINT SEALS

JS-25

FILE: js25.dgn	DN: TxDOT	DN: AN	DW: AN	CK:
© TxDOT: OCTOBER 2025	CONT	SECT	JOB	HIGHWAY
REVISIONS				
DIST	COUNTY			SHEET NO.

DATE:
FILE: