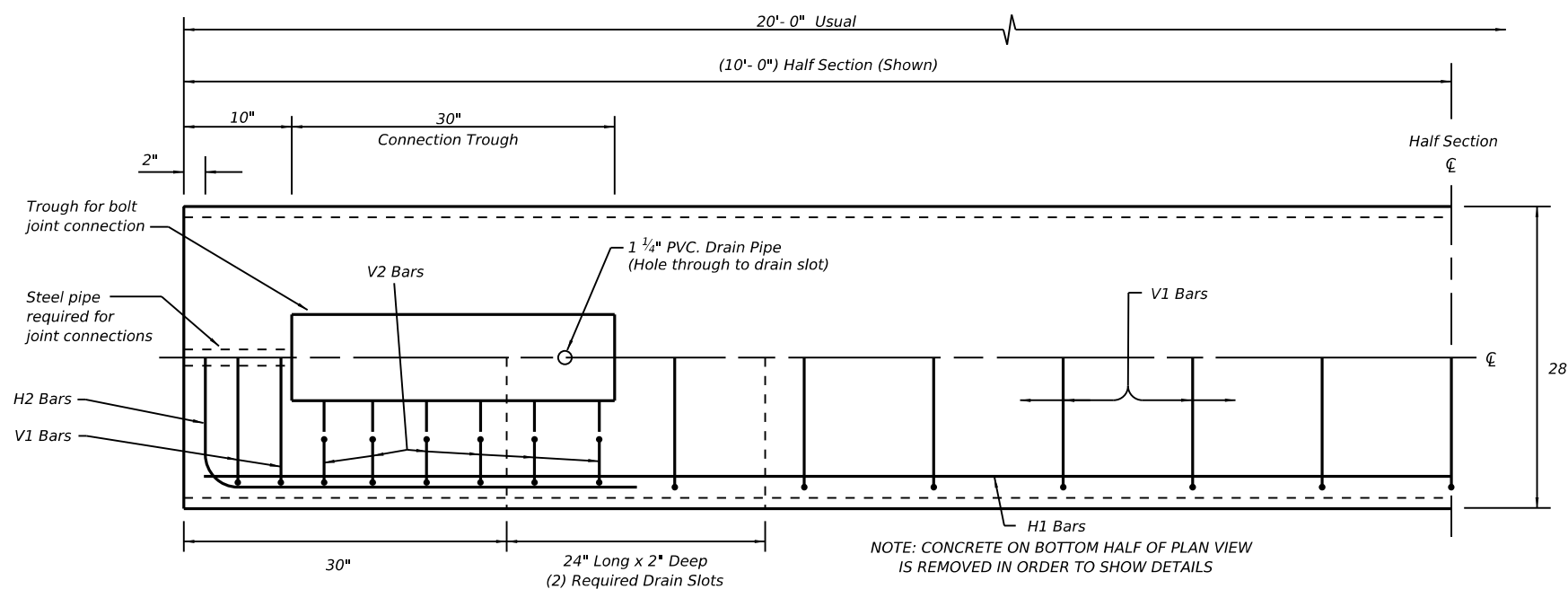
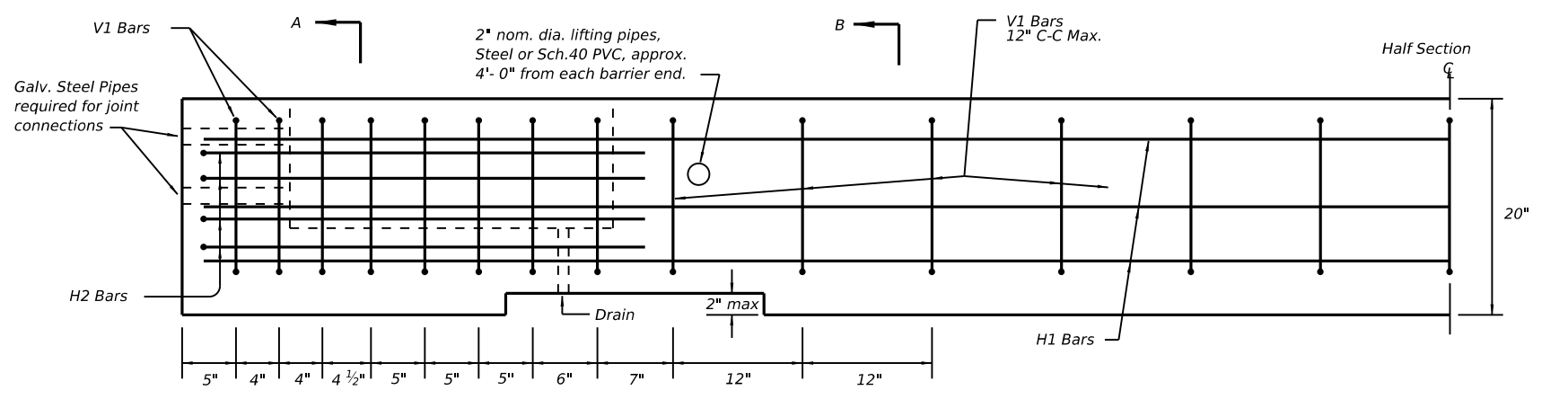


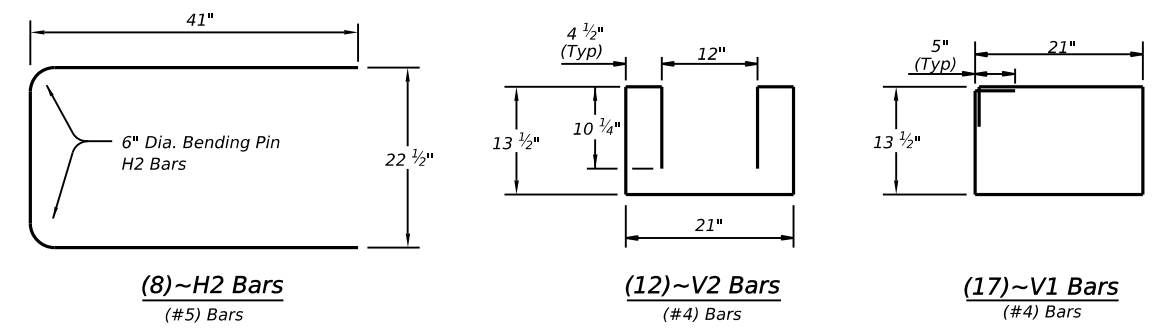
DISCLAIMER: The use of this standard is governed by the "Texas Engineering Practice Act". No warranty of any kind is made by TxDOT for any purpose whatsoever. TxDOT assumes no responsibility for the conversion of this standard to other formats or for incorrect results or damages resulting from its use.



PLAN
(TYPE 1) BARRIER SEGMENT
(SYMMETRICAL ABOUT CENTER LINES)

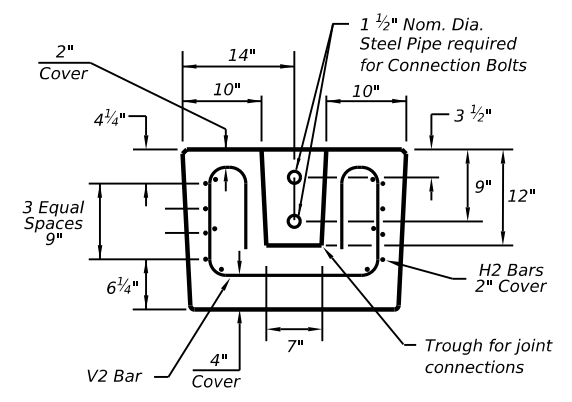


ELEVATION
(TYPE 1) BARRIER SEGMENT
(SYMMETRICAL ABOUT CENTER LINES)

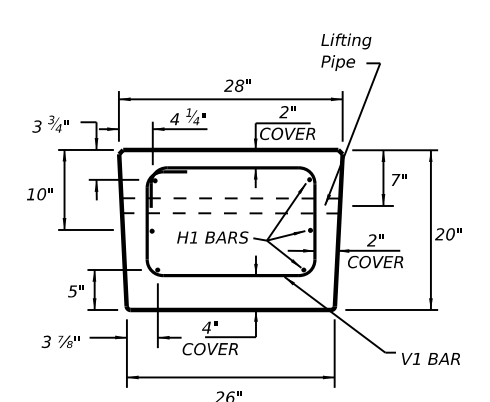


REINFORCING STEEL DETAILS
TYPE 1 - BARRIER SEGMENT

Note: Use 2" Dia. Bending Pin, unless otherwise shown



SECTION A-A



SECTION B-B

GENERAL NOTES

1. Low Profile Concrete Barrier (LPCB), is approved for use in temporary work zone locations, where the posted speed is 45 mph, or less.
2. Concrete shall be Class H for precast barrier with a minimum compressive strength of 3,600 psi.
3. Where used, rebar reinforcement shall be Grade 60 and conform to ASTM A615.
4. Precast LPCB barrier length shall be 20 ft.
5. All barrier edges shall have 3/4" chamfer or a tool radius.
6. Joint connection hardware shall be in accordance with Item 449, "Anchor Bolts," and is considered subsidiary.
7. Steel pipe required for joint connection bolts shall be galvanized in accordance with Item 445, "Galvanizing."
8. Welded wire reinforcement (WWR) may be used in lieu of conventional reinforcement for Type 1 barrier, and shall meet the requirements shown.

FOR CONTRACTORS INFORMATION ONLY

(TYPE 1) APPROX. QUANTITIES 20 FT. SECTION		
CONCRETE	CY	2.6
REINFORCING STEEL	LBS	330
TOTAL BARRIER WT.	LBS	11000

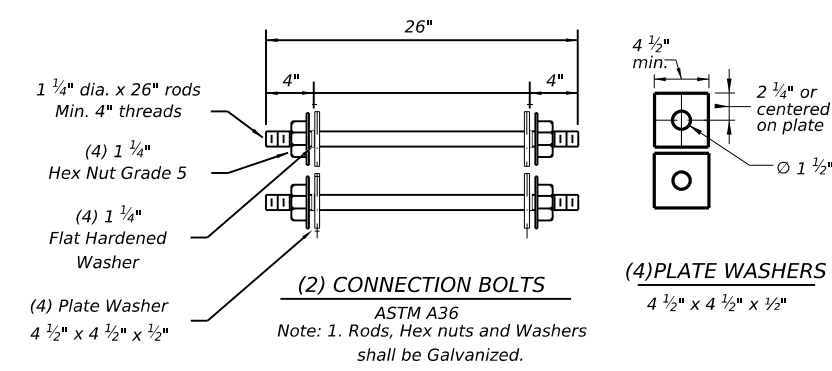
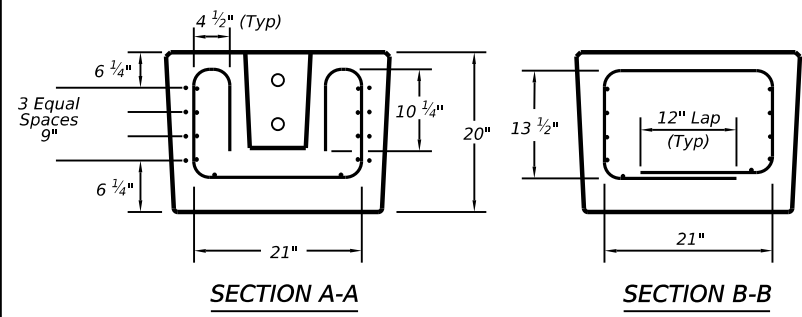
(WWR) GENERAL NOTES

1. Deformed Welded Wire Reinforcement shall conform to ASTM A497.
2. Welded wire cage may be cut or bent, if necessary, but must be approved by the Engineer.
3. Combinations of reinforcing steel and WWR are permitted, as directed by the Engineer. The dimensions from the end of the barrier section to the first wire shall not exceed 3".

REQUIRED (WWR) WIRE DESIGN

- 8 ~ (D31) Horizontal Wires (Equally spaced)
- 10 ~ (D20) Horizontal Wires (Equally spaced)
- 29 ~ (D20) Vertical Wires (Spaced as shown in Elevation View)

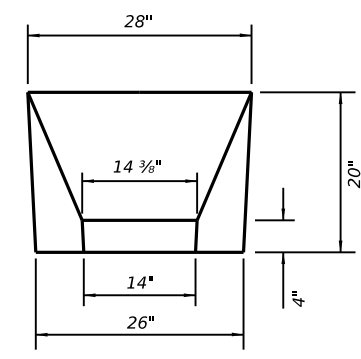
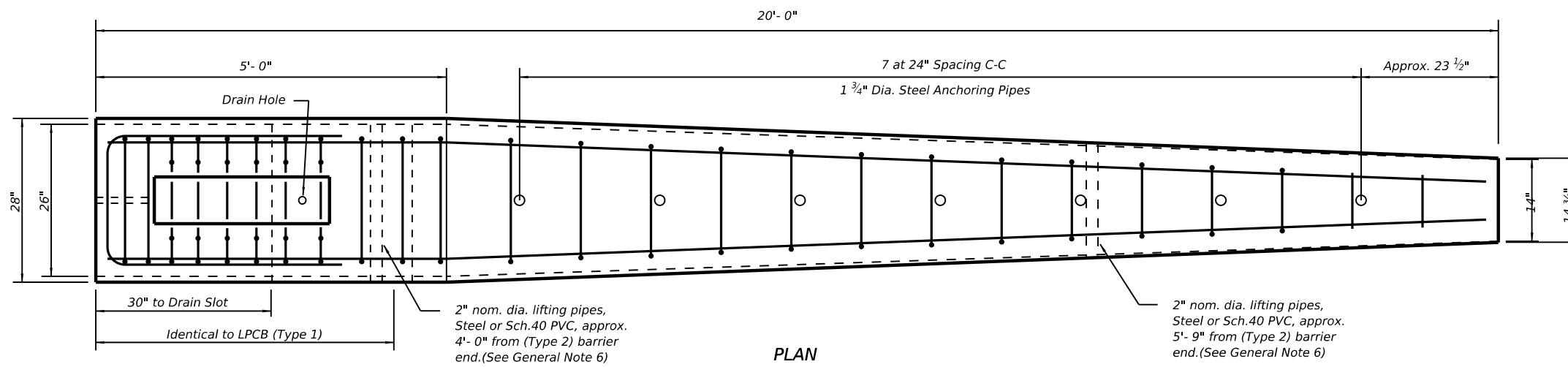
WELDED WIRE REINFORCEMENT (WWR)- OPTIONAL REINFORCING



		Design Division Standard	
<h2>LOW PROFILE CONCRETE BARRIER PRECAST BARRIER (TYPE 1) LPCB-26</h2>			
FILE: lpcb26.dgn	DN: TxDOT	CK: KM	DW: CES
© TxDOT May 2026	CONT	SECT	JOB
REVISIONS	DIST	COUNTY	SHEET NO.

DATE: FILE:

DISCLAIMER: The use of this standard is governed by the "Texas Engineering Practice Act". No warranty of any kind is made by TxDOT for any purpose whatsoever. TxDOT assumes no responsibility for the conversion of this standard to other formats or for incorrect results or damages resulting from its use.

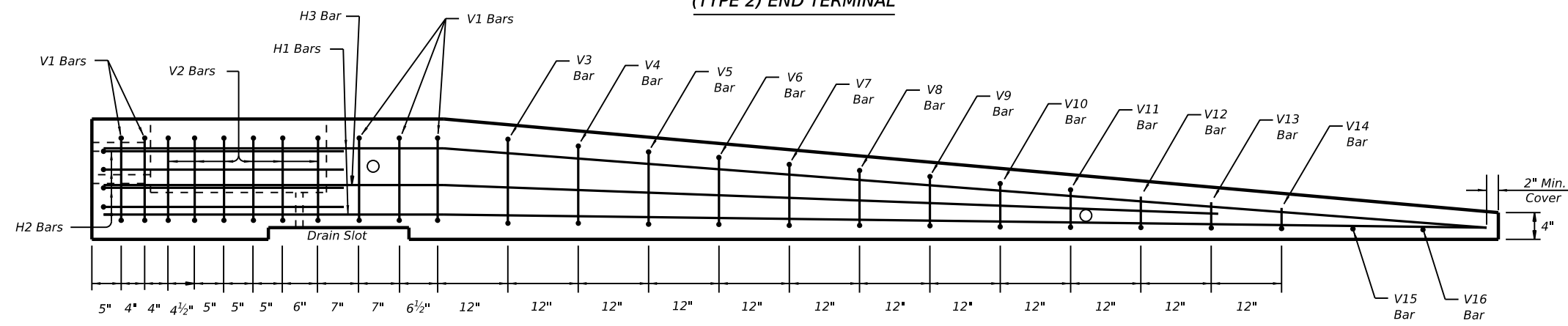


**PLAN
(TYPE 2) END TERMINAL**

APPROACH VIEW

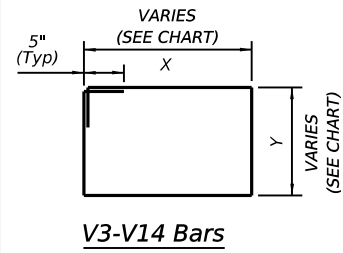
TYPE 2 - NOTES

1. Welded wire reinforcement (WWR) is "not" an option for Type 2 Barrier.
2. Type 2 Barrier shall be used as an end treatment for the Type 1 barrier segments, when applicable.
3. The end treatment can be used without the anchor pins in locations that can accommodate approximately 4 ft. of lateral displacement of the end treatment. The use of non-pinned end treatment does not affect the performance or the deflection of the Low-Profile barrier system.
4. The anchor pins are all the same length and are to be driven flush with the top of the (Type 2) barrier surface.
5. The bends in the H3 and H1 bars are slight, no formal bend is necessary.
6. The Type 2 barrier segment must be lifted from the rear first, to prevent cracking of sloped section.
7. See LPCB sheet 1 for additional information.

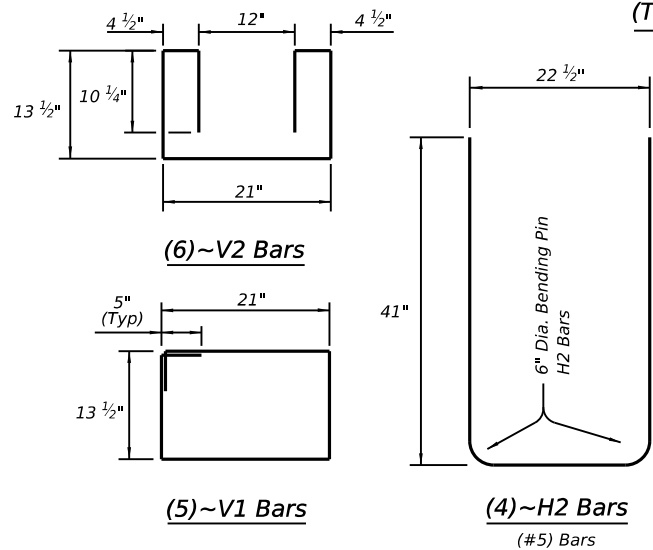


**ELEVATION
(TYPE 2) END TERMINAL**

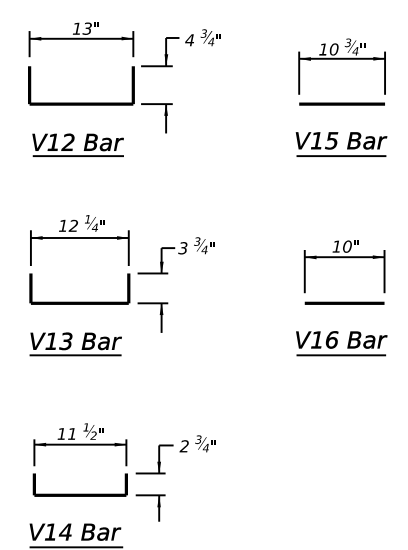
Note: Anchoring pipes not shown in Elevation View



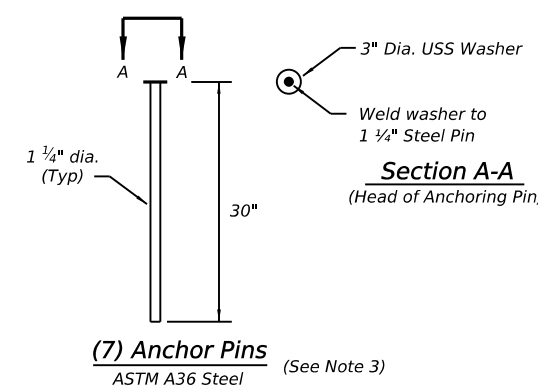
BAR(#4)	X (IN.)	Y (IN.)
V3 BAR	20 3/4	14 1/2
V4 BAR	19 1/2	13 1/2
V5 BAR	18 1/2	12 1/4
V6 BAR	17 1/2	11 1/4
V7 BAR	17	10 1/4
V8 BAR	16 1/4	9
V9 BAR	15 1/2	8
V10 BAR	14 1/2	7
V11 BAR	13 3/4	6



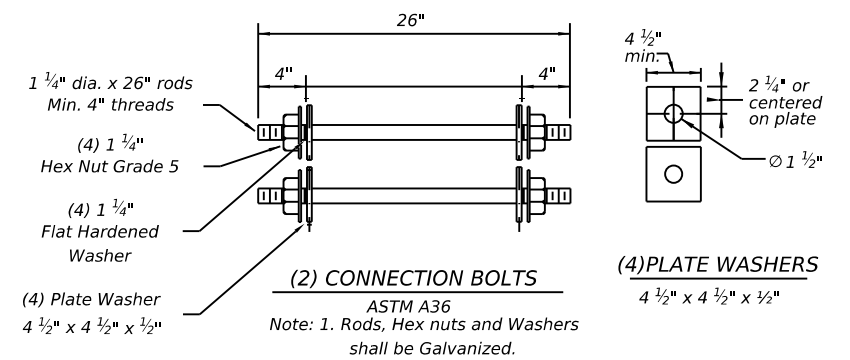
**REINFORCING STEEL DETAILS
TYPE 2 - END TERMINAL**



Note: All V Bars are (#4)

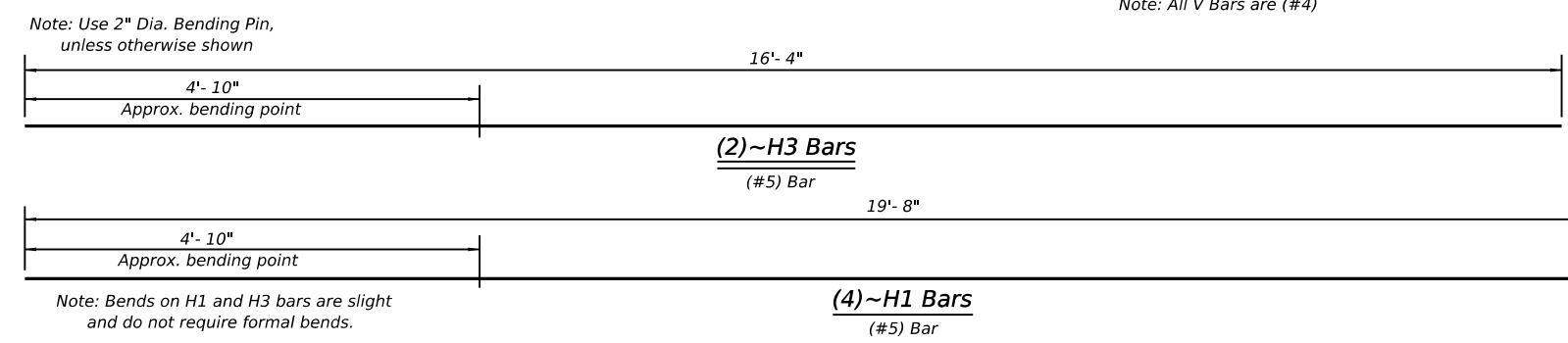


**(7) Anchor Pins
ASTM A36 Steel (See Note 3)**



FOR CONTRACTORS INFORMATION ONLY

(TYPE 2) APPROX. QUANTITIES 20 FT. SECTION			
CONCRETE	CY	1.65	
REINFORCING STEEL	LBS	240	
TOTAL BARRIER WT.	LBS	7000	



Note: Bends on H1 and H3 bars are slight and do not require formal bends.

Design Division Standard

LOW PROFILE
 CONCRETE BARRIER
 PRECAST BARRIER
 (TYPE 2)
 LPCB-26

FILE: lpcb26.dgn	DN: TxDOT	CK: KM	DW: CES	CK:
© TxDOT	CON: May 2026	SECT:	JOB:	HIGHWAY:
REVISIONS		DIST:	COUNTY:	SHEET NO.:

DATE: FILE: