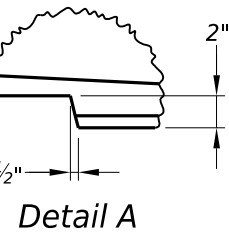
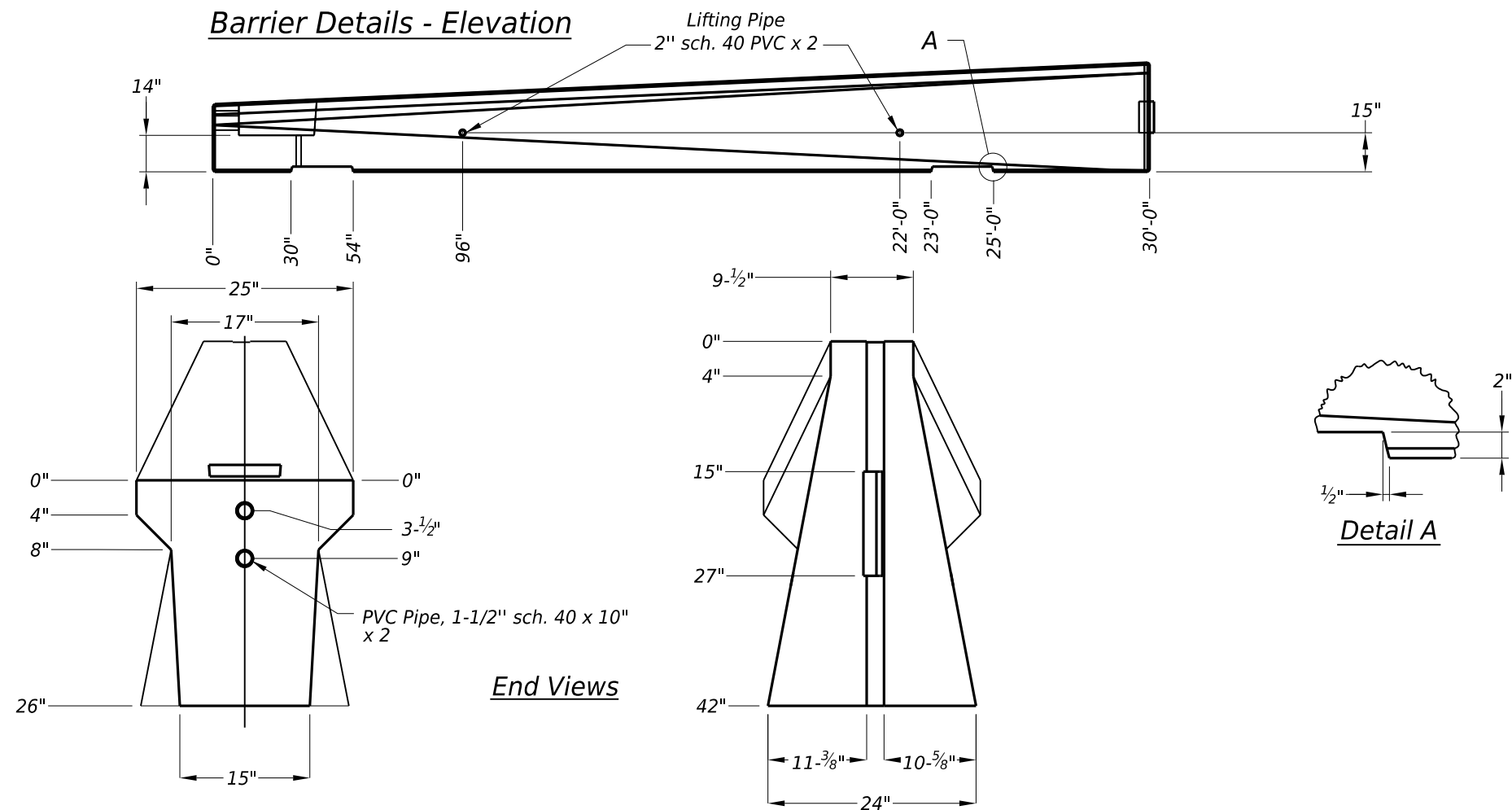


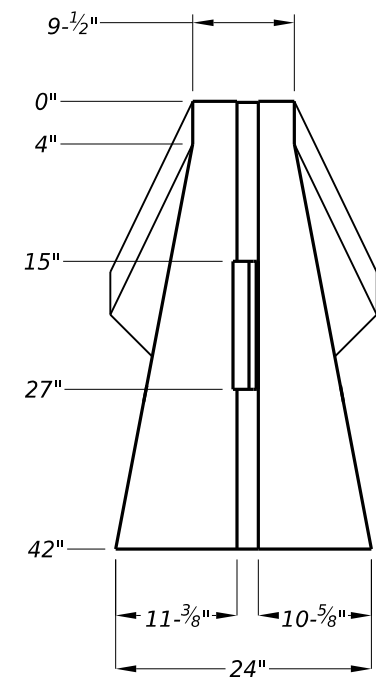
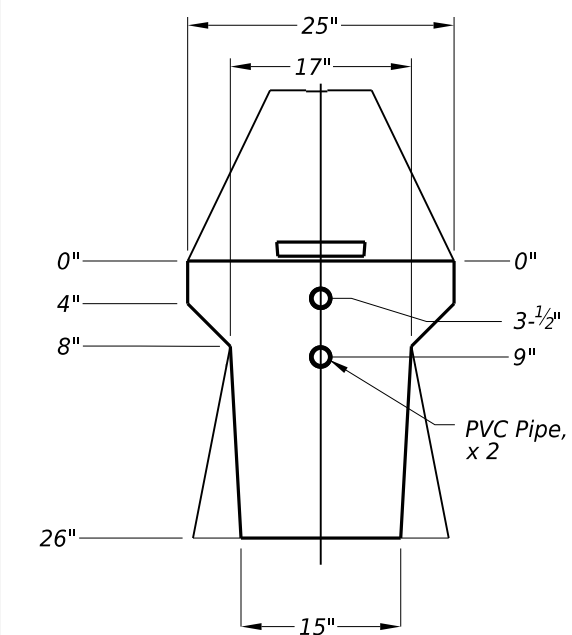
Barrier Details - Elevation



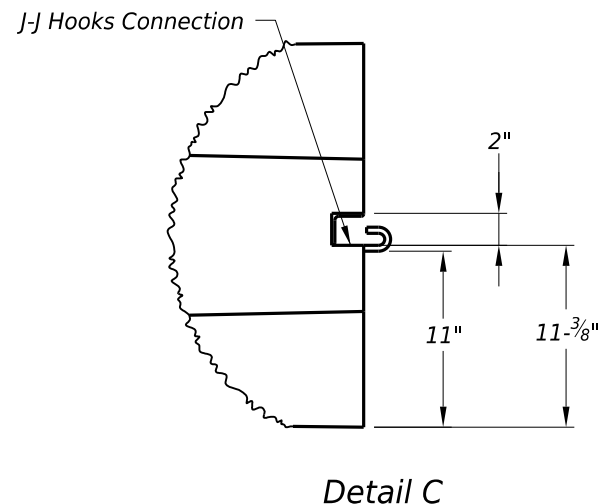
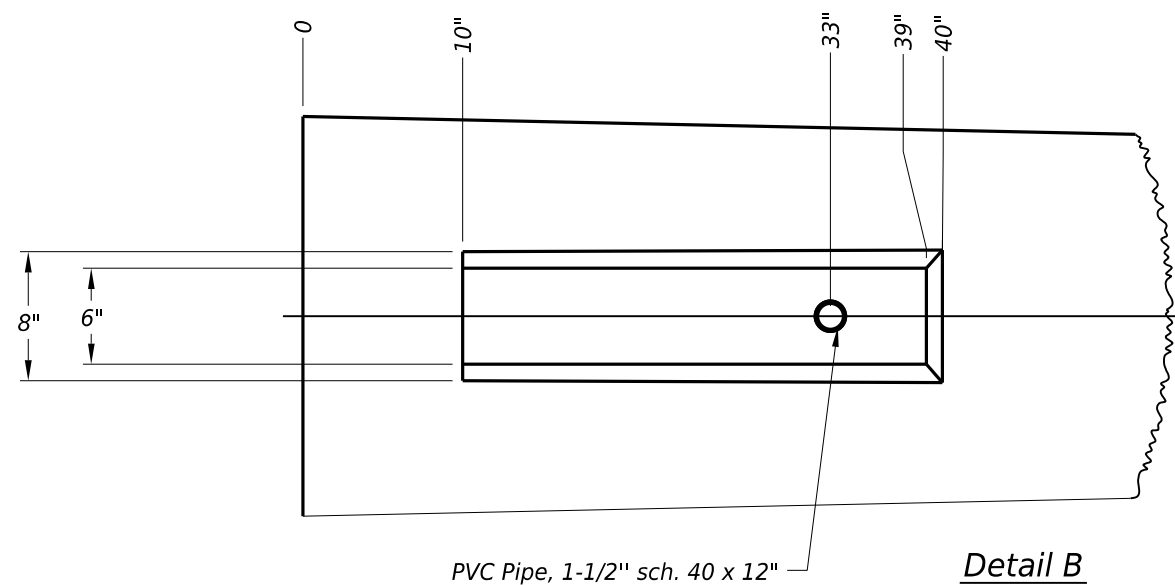
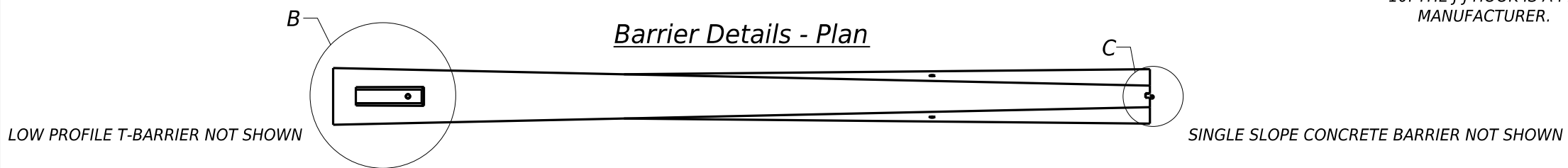
GENERAL NOTES

1. CONCRETE SHALL BE CLASS C WITH A MINIMUM COMPRESSIVE STRENGTH OF 3600 PSI.
2. THESE DETAILS COVER BARRIER PER ITEM 512, "PORTABLE TRAFFIC BARRIER".
3. ALL CONNECTION HARDWARE IS SUBSIDIARY TO THE BARRIER COST.
4. 1" CHAMFER (3/4" EACH WAY) ON EDGES OF PARAPET AND CORNERS OF POSTS WHERE INDICATED. CHAMFER NOT SHOWN IN ENDS FOR CLARITY.
5. ALL REBAR IS GRADE 60 AND SHALL CONFORM TO ASTM A615. REBAR DIMENSIONS IN ELEVATION AND SECTION VIEW ARE TO CENTER UNLESS OTHERWISE INDICATED BY "CVR" (COVER).
6. THIS BARRIER TRANSITION SYSTEM HAS AN ESTIMATED MAXIMUM DEFLECTION OF 50 INCHES FOR MASH TL-3 IMPACT CONDITIONS WITH A 5,000 LB. PICKUP TRUCK WHEN CONNECTING A TL-3 LOW PROFILE T-BARRIER AND A SSCB. IF THIS TRANSITION IS TERMINATED IN ANOTHER MANNER, THE DEFLECTION CHARACTERISTICS MAY VARY.
7. PVC PIPE REQUIRED FOR THE JOINT CONNECTION, LIFTING PIPES AND THROUGH DRAINAGE PIPES SHALL BE IN ACCORDANCE WITH ITEM 481, AND MEET THE REQUIREMENTS OF ASTM D1785. LIFTING DEVICES AND ATTACHMENTS TO BARRIER SECTIONS SHALL BE APPROVED BY THE ENGINEER.
8. ALL STEEL COMPONENTS SHALL BE GALVANIZED AFTER FABRICATION IN ACCORDANCE WITH ITEM 455, "GALVANIZING". JOINT CONNECTION HARDWARE SHALL BE IN ACCORDANCE WITH ITEM 449, "ANCHOR BOLTS" AND IS CONSIDERED SUBSIDIARY.
9. THIS TRANSITION IS INTENDED TO PROVIDE A CONNECTION BETWEEN A TL-3 LOW PROFILE T-BARRIER AND A 42" SSCB (WITH J-J HOOK CONNECTION) IN WORK ZONES. IT CAN ALSO BE TERMINATED WITH AN APPROPRIATE CRASH CUSHION ON THE SINGLE SLOPE BARRIER SIDE. THIS BARRIER IS NOT TO BE ANCHORED IN ANY WAY.
10. THE J-J HOOK IS A PROPRIETARY CONNECTION AND MUST BE PROVIDED BY AN APPROVED MANUFACTURER.

End Views



Barrier Details - Plan



SHEET 1 OF 5

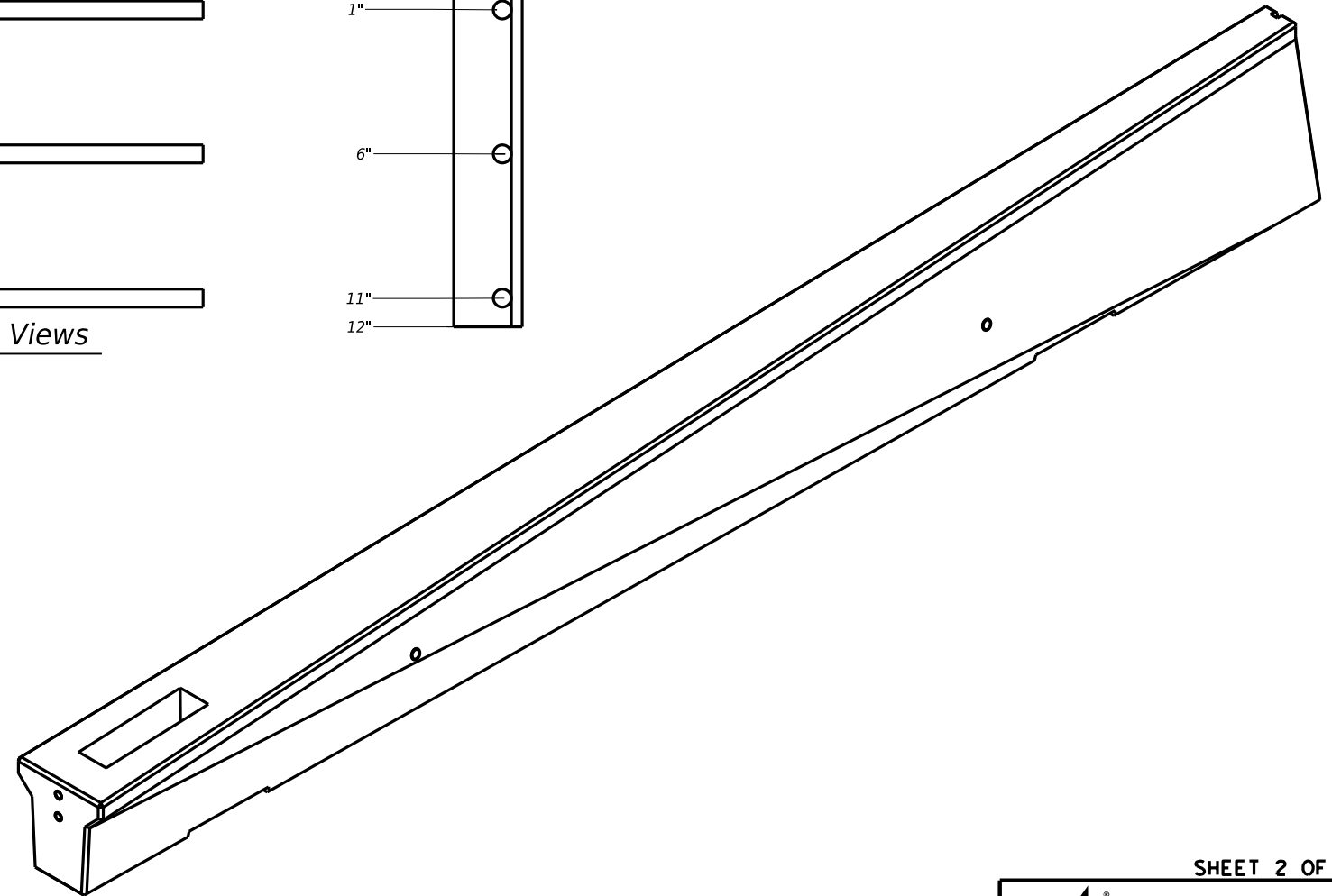
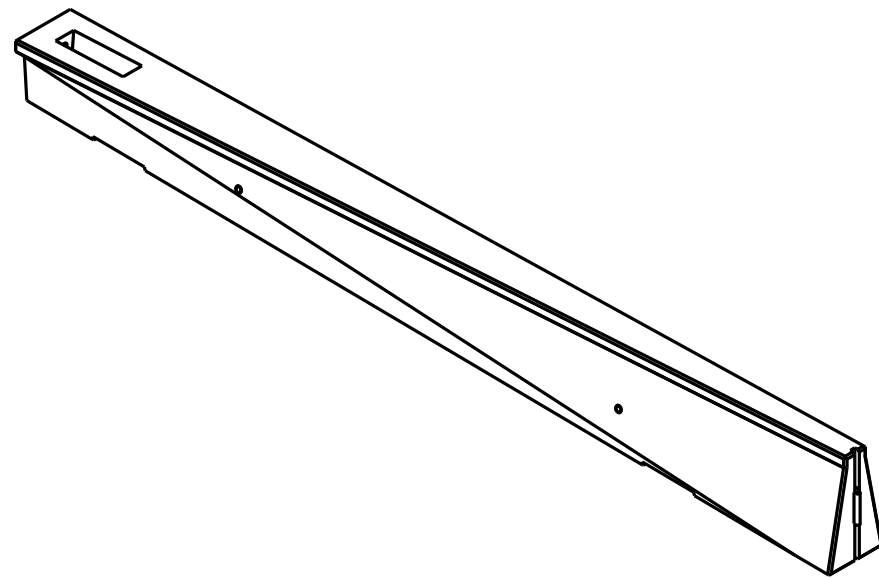
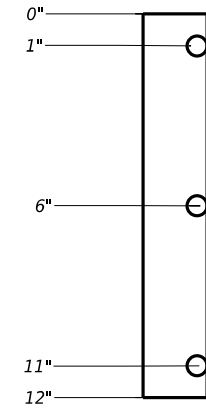
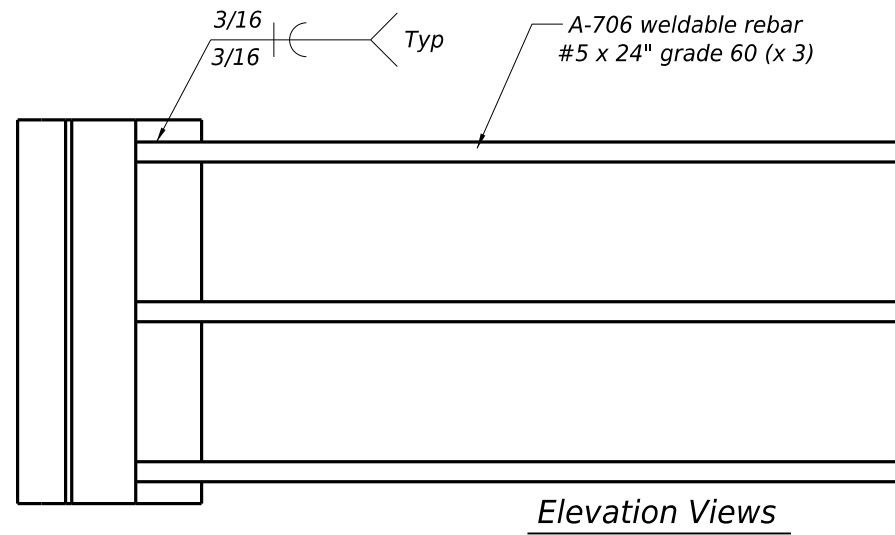
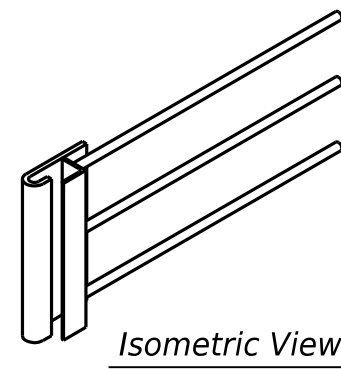
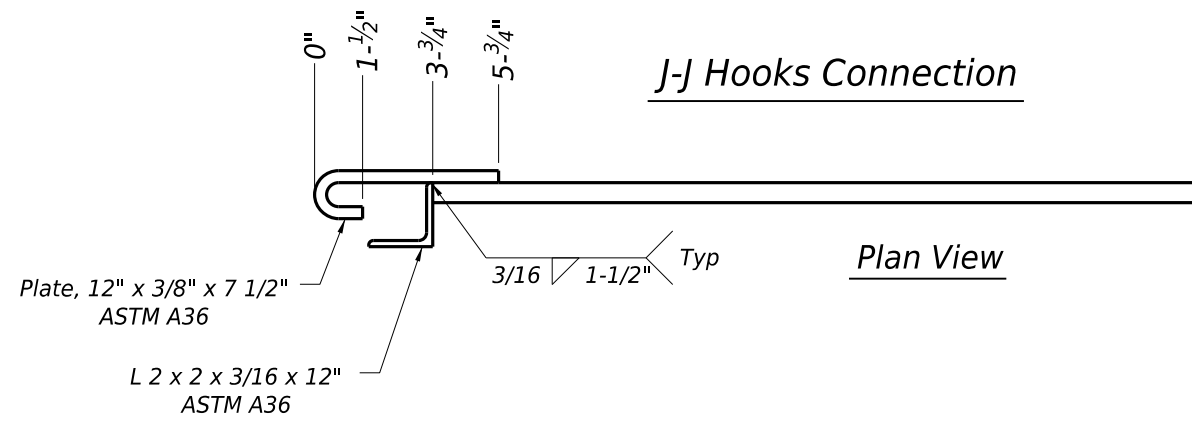
Texas Department of Transportation
 Design Division Standard

**PRECAST
 T-BARRIER TO SSCB
 TRANSITION
 MASH TL-3**

LPTBSSCB (TR) -26

FILE: lptbssbtr 26.dgn	DN: TxDOT	CK: KM	DW: CES	CK:
© TxDOT: May 2026	CONT	SECT	JOB	HIGHWAY
REVISIONS				
DIST	COUNTY			SHEET NO.

J-J Hooks Connection



SHEET 2 OF 5

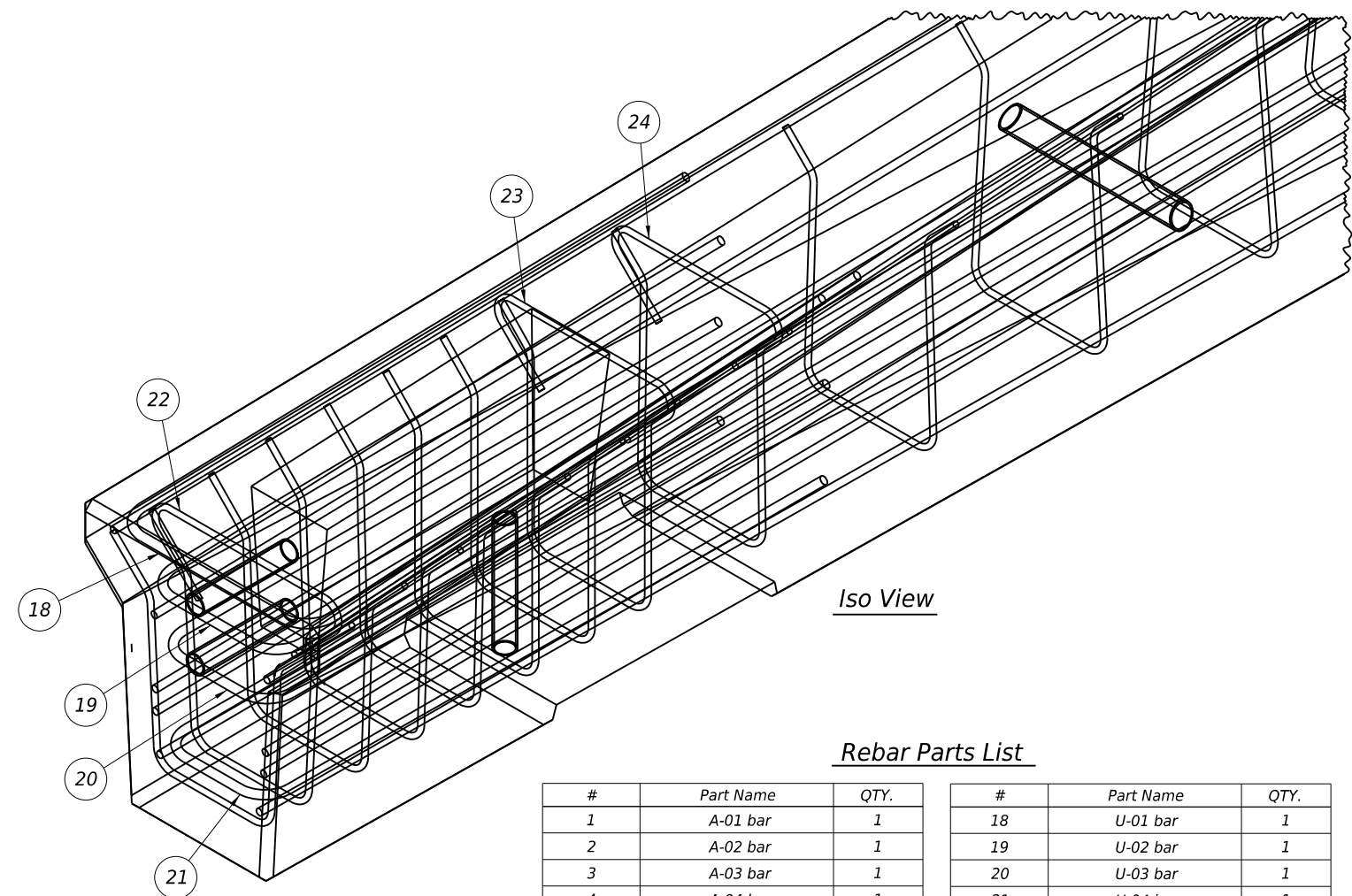
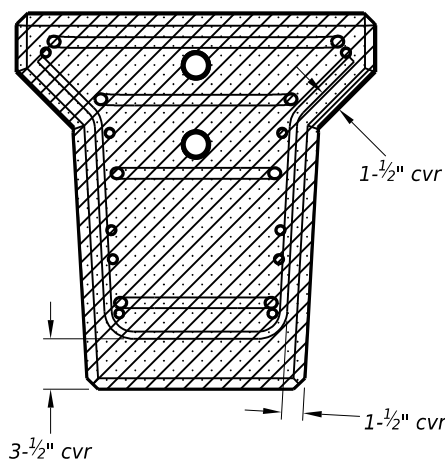
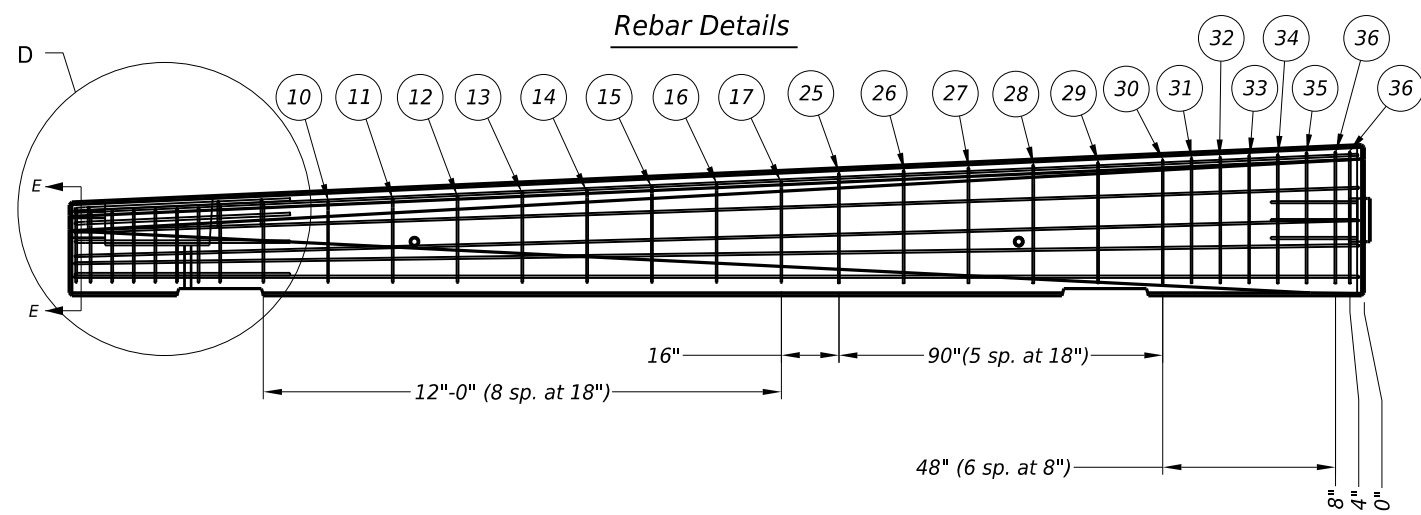
Texas Department of Transportation

Design
Division
Standard

PRECAST
T-BARRIER TO SSCB
TRANSITION
MASH TL-3

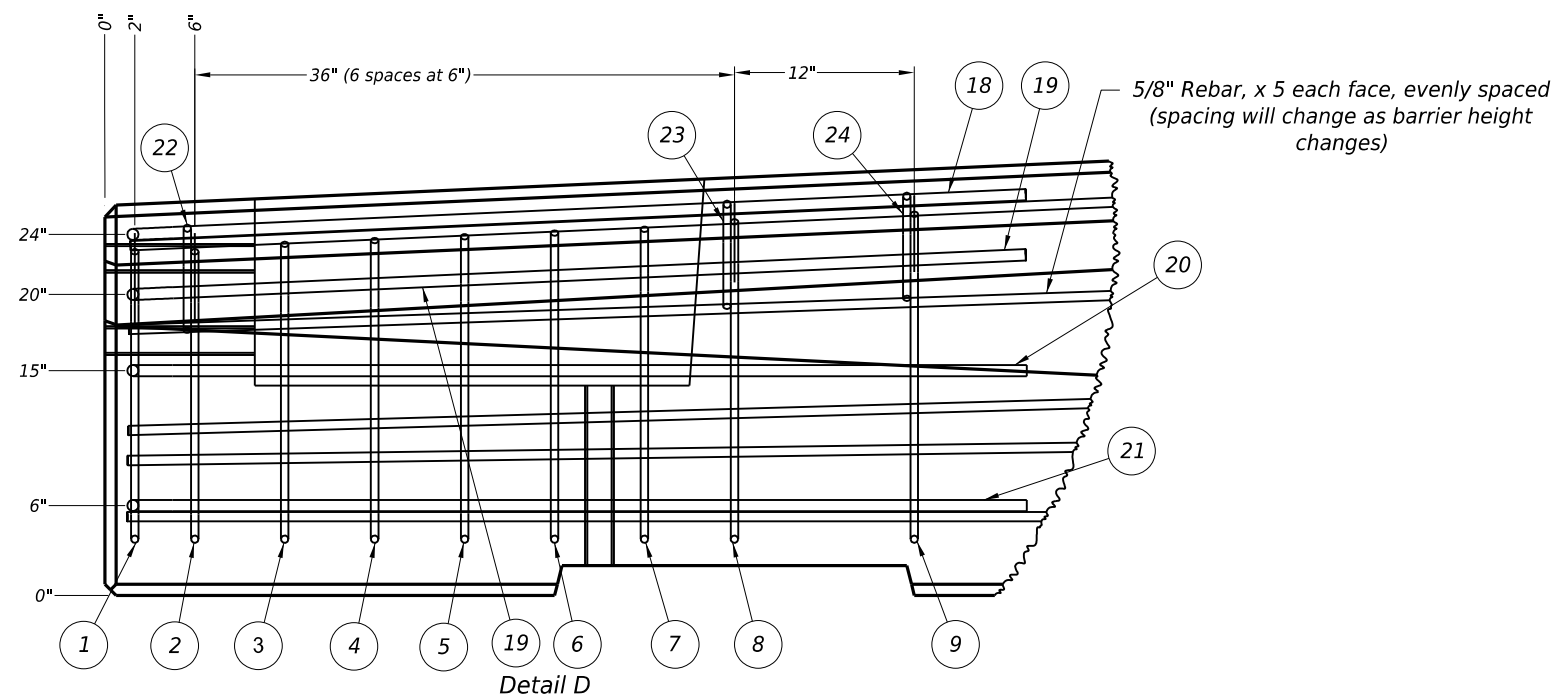
LPTBSSCB (TR) - 26

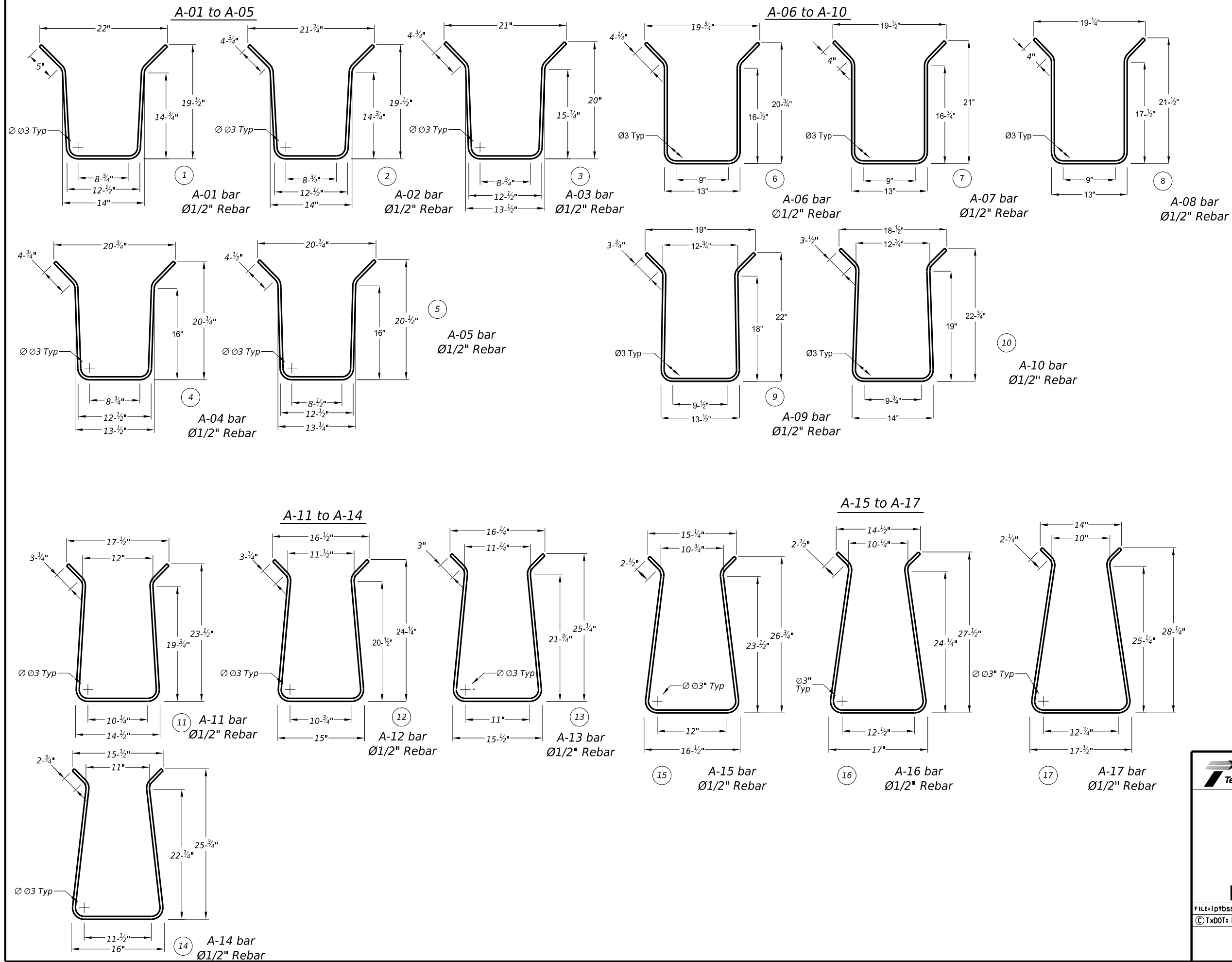
FILE: lptbsscbtr26.dgn	DN: TxDOT	CK: NM	DW: CES	CK:
© TxDOT: May 2026	CONT	SECT	JOB	HIGHWAY
REVISIONS				
DIST	COUNTY		SHEET NO.	



Rebar Parts List

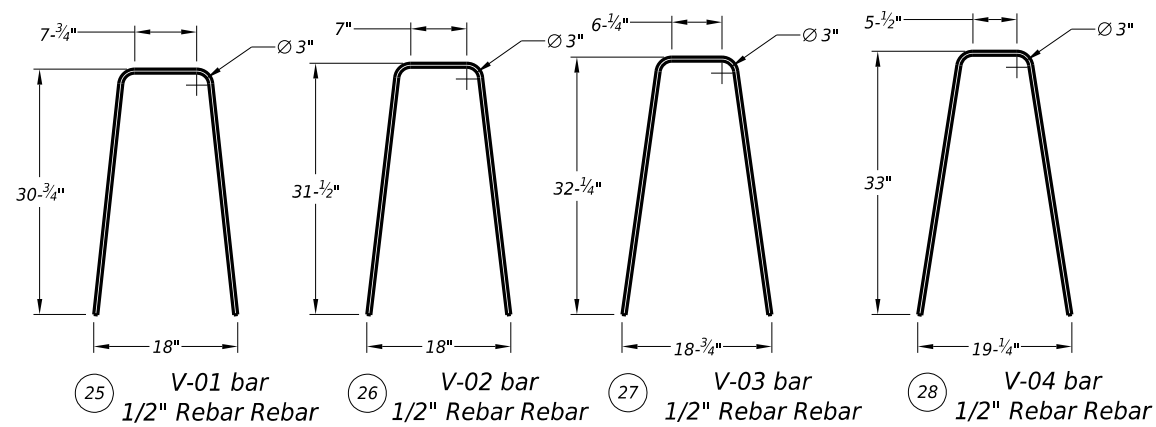
#	Part Name	QTY.	#	Part Name	QTY.
1	A-01 bar	1	18	U-01 bar	1
2	A-02 bar	1	19	U-02 bar	1
3	A-03 bar	1	20	U-03 bar	1
4	A-04 bar	1	21	U-04 bar	1
5	A-05 bar	1	22	Y-01 bar	1
6	A-06 bar	1	23	Y-02 bar	1
7	A-07 bar	1	24	Y-03 bar	1
8	A-08 bar	1	25	V-01 bar	1
9	A-09 bar	1	26	V-02 bar	1
10	A-10 bar	1	27	V-03 bar	1
11	A-11 bar	1	28	V-04 bar	1
12	A-12 bar	1	29	V-05 bar	1
13	A-13 bar	1	30	V-06 bar	1
14	A-14 bar	1	31	V-07 bar	1
15	A-15 bar	1	32	V-08 bar	1
16	A-16 bar	1	33	V-09 bar	1
17	A-17 bar	1	34	V-10 bar	1
			35	V-11 bar	1
			36	V-12 bar	2



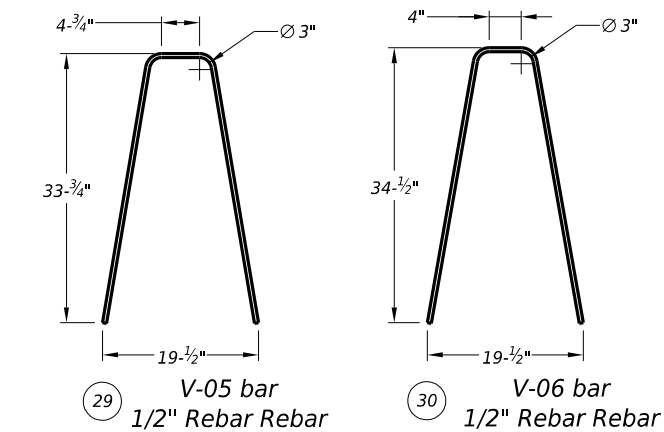
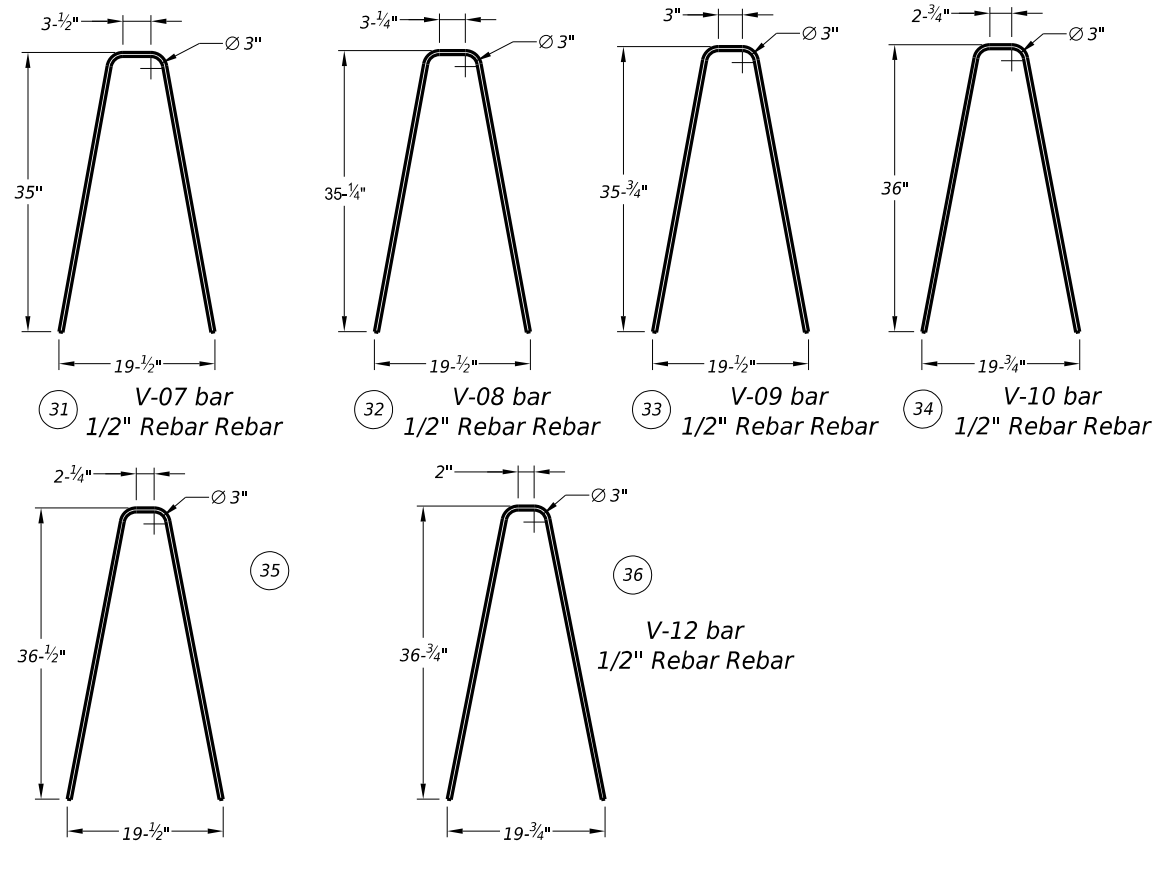


		Design Division Standard	
PRECAST T-BARRIER TO SSCB TRANSITION MASH TL-3			
LPTBSSCB (TR) - 26			
FILE: lptbsscbtr26.dgn	DN: TxDOT	CK: KM	DW: CES
© TxDOT: May 2026	CONT	SECT	JOB
REVISIONS		HIGHWAY	
DIST	COUNTY	SHEET NO.	

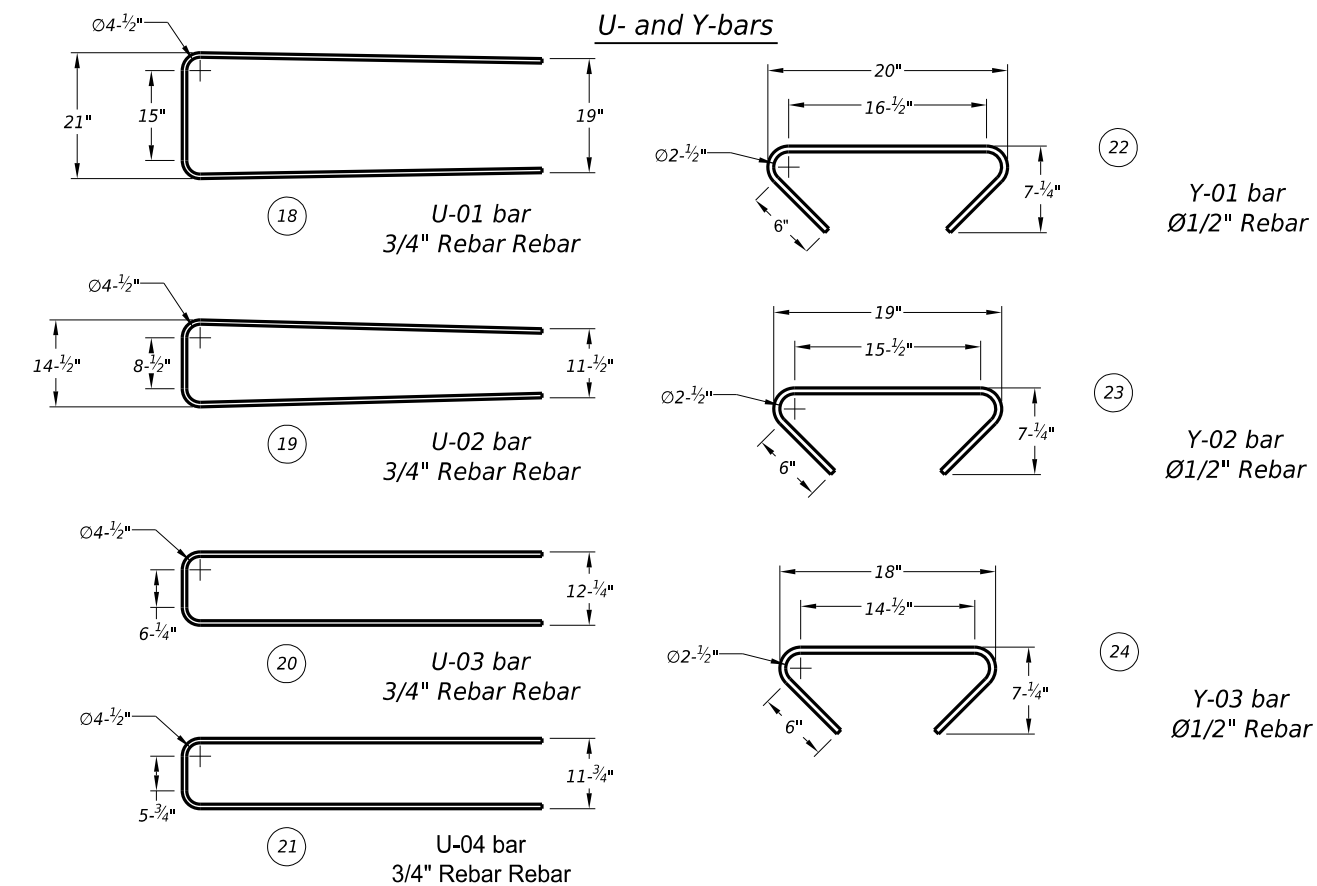
V-01 to V-06



V-07 to V-12



U- and Y-bars



**PRECAST
 T-BARRIER TO SSCB
 TRANSITION
 MASH TL-3**

LPTBSSCB (TR) - 26

FILE: lptbsscbtr26.dgn	DN: TxDOT	CK: KM	DW: CES	CK:
© TxDOT: May 2026	CONT	SECT	JOB	HIGHWAY
REVISIONS				
DIST	COUNTY			SHEET NO.