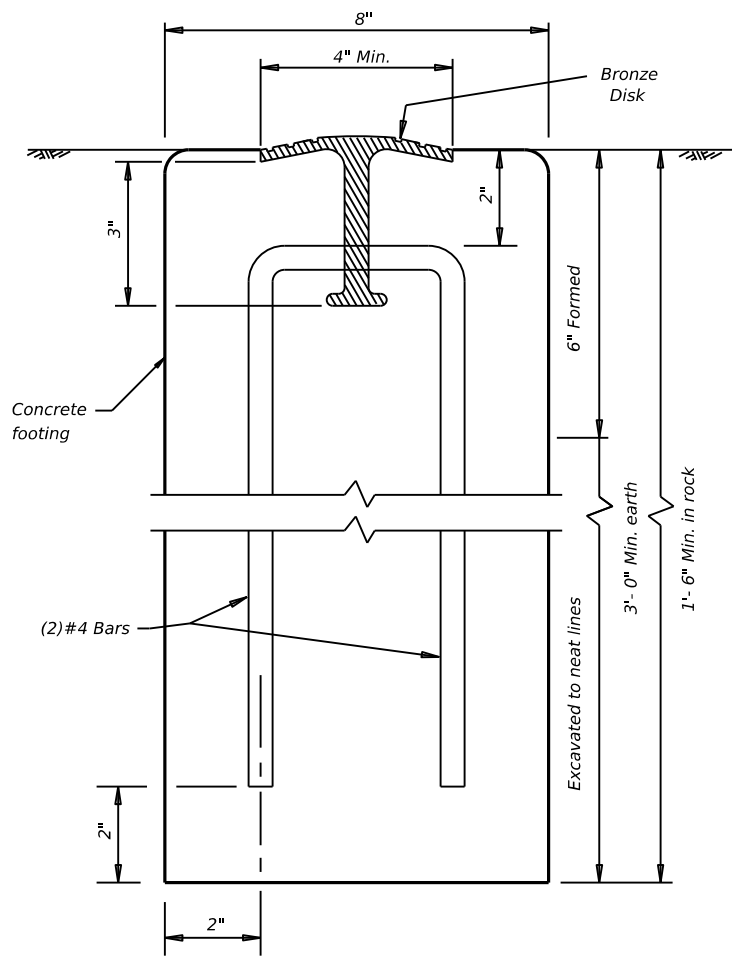
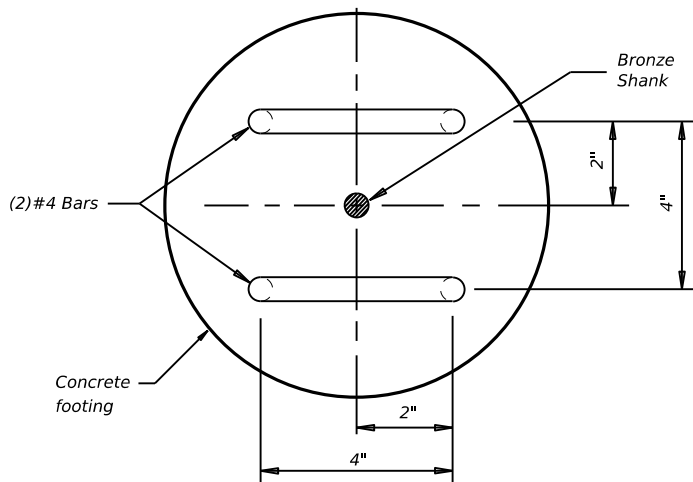


DISCLAIMER: The use of this standard is governed by the "Texas Engineering Practice Act". No warranty of any kind is made by TxDOT for any purpose whatsoever. TxDOT assumes no responsibility for the conversion of this standard to other formats or for incorrect results or damages resulting from its use.

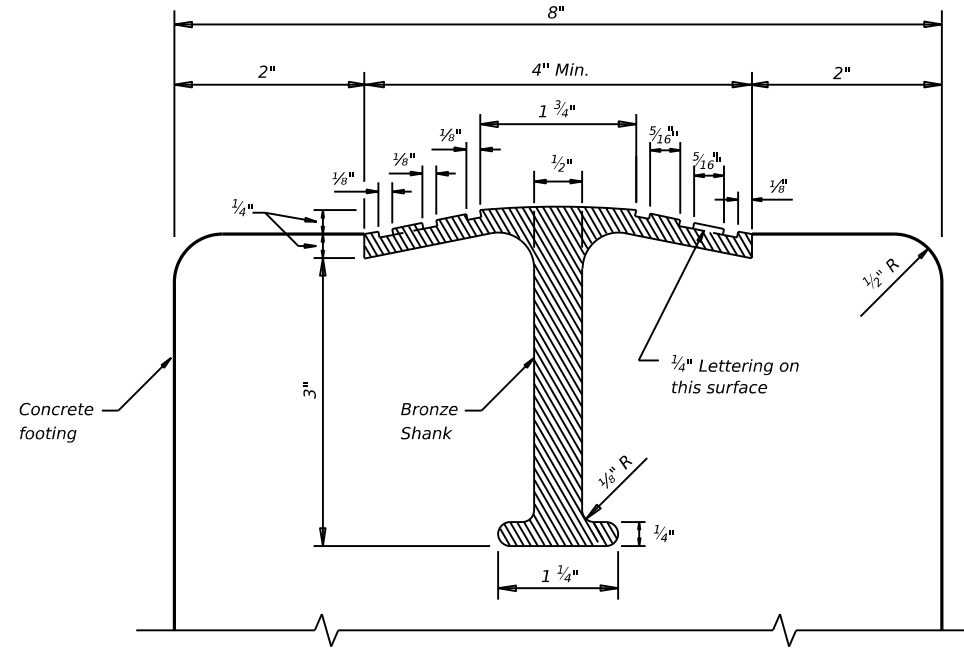
DATE:
FILE:



SECTION A-A

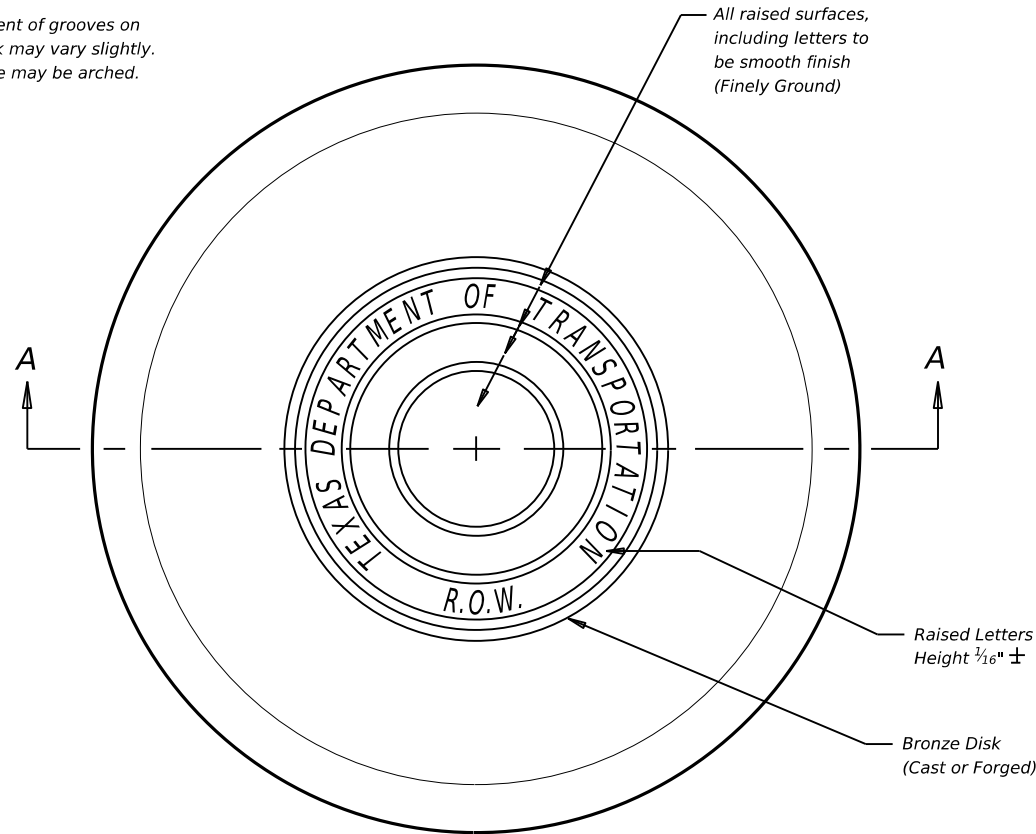


CROSS SECTION THRU MARKER



SECTION THRU TOP OF ROW MARKER

Note:
Measurement of grooves on face of disk may vary slightly. Top surface may be arched.



TOP VIEW OF ROW MARKER

GENERAL NOTES

1. ALL MATERIALS AND CONSTRUCTION SHALL BE IN ACCORDANCE WITH ITEM 538, "RIGHT OF WAY MARKERS."
2. RIGHT-OF-WAY MARKER CONCRETE SHALL BE POURED IN PLACE. THE BRONZE DISKS SHALL BE SET TO THE CORRECT LINE AND GRADE, AS DIRECTED BY THE ENGINEER.
3. THE BRONZE DISK SHALL BE OF ARCHITECTURAL BRONZE WITH THE FOLLOWING COMPOSITION: COPPER 85%, TIN 5%, LEAD 5%, ZINC 5%. EXCAVATION OF THE MARKER LOCATIONS SHALL BE MADE OF UNIFORM LINES EXCEPT FOR THE TOP OF 6 INCHES WHICH SHALL BE FORMED WITH REMOVABLE FORMS. THE TOP PART OF THE MARKER AROUND THE BRONZE DISK SHALL RECEIVE A TROWEL FINISH.
4. ONCE THE CONCRETE HAS SET, THE ENGINEER WILL STENCIL THE REQUIRED SURVEY DATA AND, WITH A CHISEL OR CENTER PUNCH, CUT ACROSS MARKER THE EXACT LOCATION OF THE RIGHT-OF-WAY LINE IN THE BRONZE DISK.

| | | | |
|--|-----------|--------------------------|-----------|
| | | Design Division Standard | |
| <h2>RIGHT-OF-WAY MARKER</h2> <h3>M-10</h3> | | | |
| FILE: m10.dgn | DN: TxDOT | CK: AM | DW: BD/VP |
| © TxDOT February 1992 | CONT | SECT | JOB |
| REVISIONS | | | HIGHWAY |
| | DIST | COUNTY | SHEET NO. |