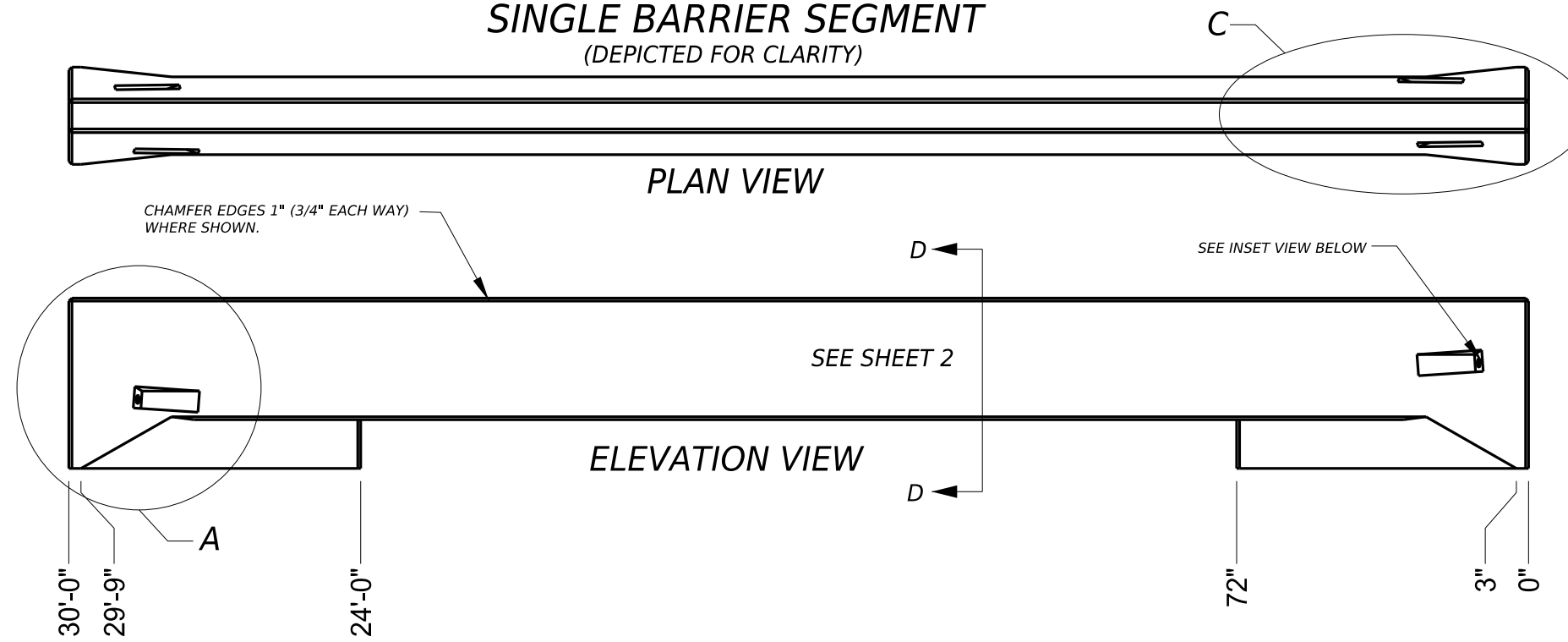
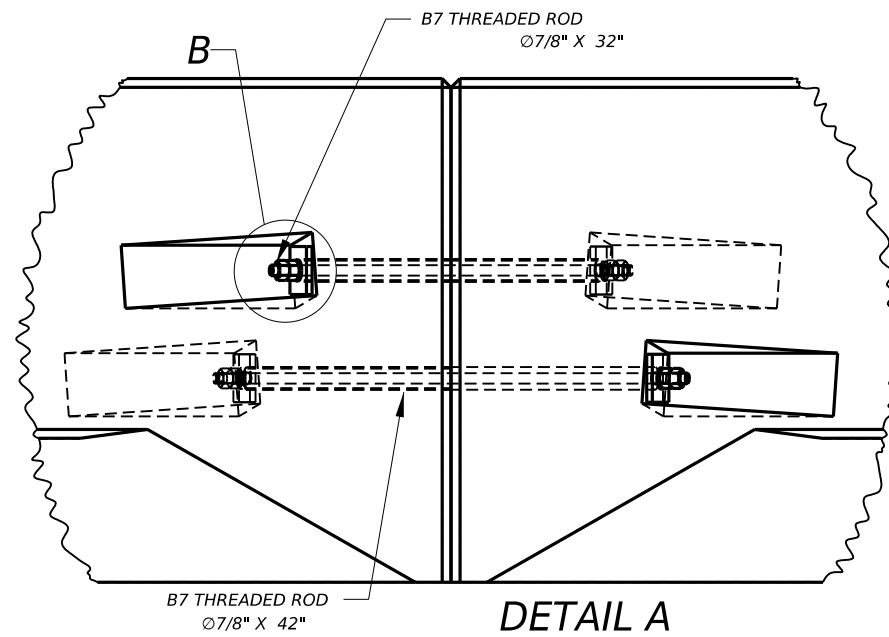


SINGLE BARRIER SEGMENT (DEPICTED FOR CLARITY)

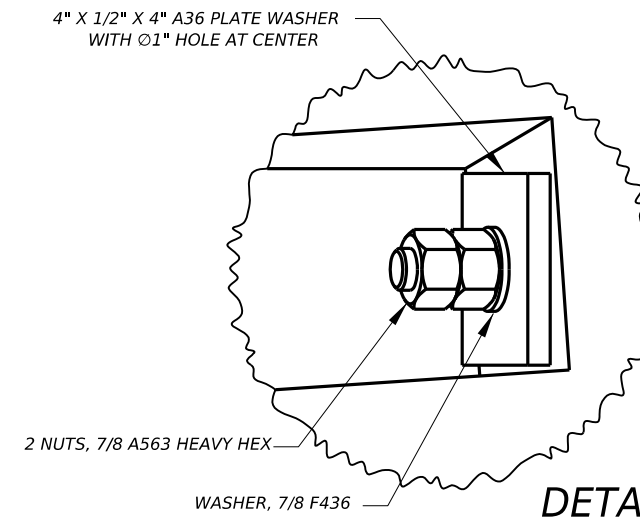


GENERAL NOTES

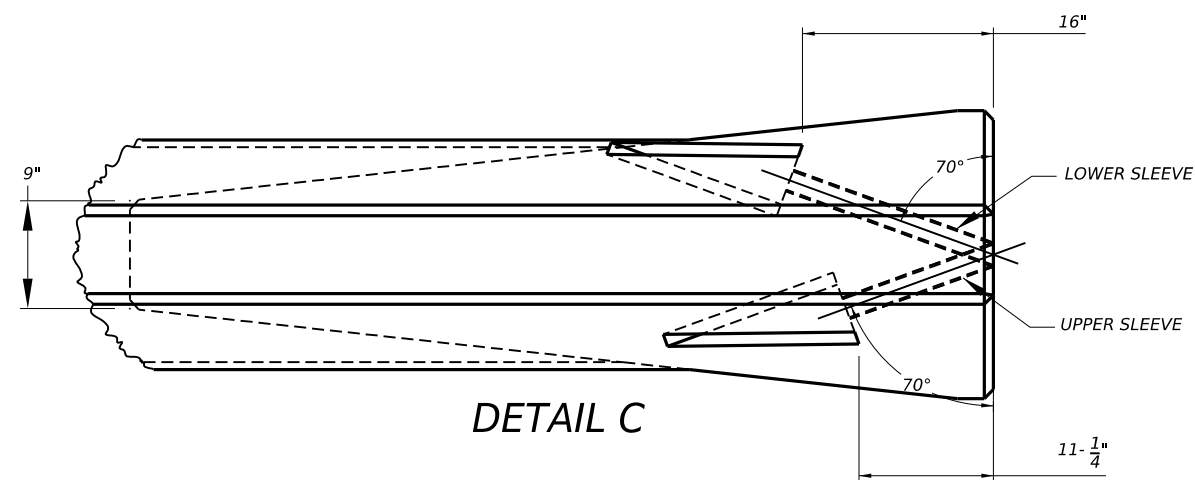
1. CONCRETE SHALL BE CLASS S WITH A MINIMUM COMPRESSIVE STRENGTH OF 4000 PSI.
2. THESE DETAILS COVER BARRIER PER ITEM 512, "PORTABLE TRAFFIC BARRIER".
3. ALL CONNECTION HARDWARE IS SUBSIDIARY TO THE BARRIER COST.
4. 1" CHAMFER (3/4" EACH WAY) ON EDGES OF PARAPET AND THE CORNERS OF POST WHERE INDICATED.
5. ALL REBAR IS GRADE 60 AND SHALL CONFORM TO ASTM A615. REBAR DIMENSIONS IN ELEVATION AND SECTION VIEW ARE TO CENTER UNLESS OTHERWISE INDICATED BY "CVR" (COVER).
6. THIS BARRIER SYSTEM HAS AN ESTIMATED MAXIMUM DEFLECTION OF 23 INCHES FOR MASH TL-3 IMPACT CONDITIONS WITH A 5,000 LB. PICKUP TRUCK, AND 44 INCHES OF MAXIMUM DYNAMIC DEFLECTION FOR MASH TL-4 CONDITIONS WITH A 22,000 LB. SINGLE UNIT TRUCK.
7. LIFTING POINTS SHALL BE APPROXIMATELY 7.5 FEET FROM THE ENDS OF THE BARRIER. LIFTING DEVICES AND ATTACHMENTS TO BARRIER SECTIONS SHALL BE APPROVED BY THE ENGINEER.
8. ALL STEEL COMPONENTS SHALL BE GALVANIZED AFTER FABRICATION IN ACCORDANCE WITH ITEM 445, "GALVANIZING".



DETAIL A



DETAIL B



DETAIL C

PART NAME	QTY PER BARRIER SEGMENT
LARGE SCUPPER BARRIER	1
TOP ROD	1
BOTTOM ROD	1
PLATE WASHER	4
WASHER, 7/8 F436	4
NUT, 7/8 A563 HEAVY HEX	8

1A. THREADS NOT SHOWN ON RODS FOR CLARITY.

DISCLAIMER: The use of this standard is governed by the "Texas Engineering Practice Act". No warranty of any kind is made by TxDOT for any purpose whatsoever. TxDOT assumes no responsibility for the conversion of this standard to other formats or for incorrect results or damages resulting from its use.

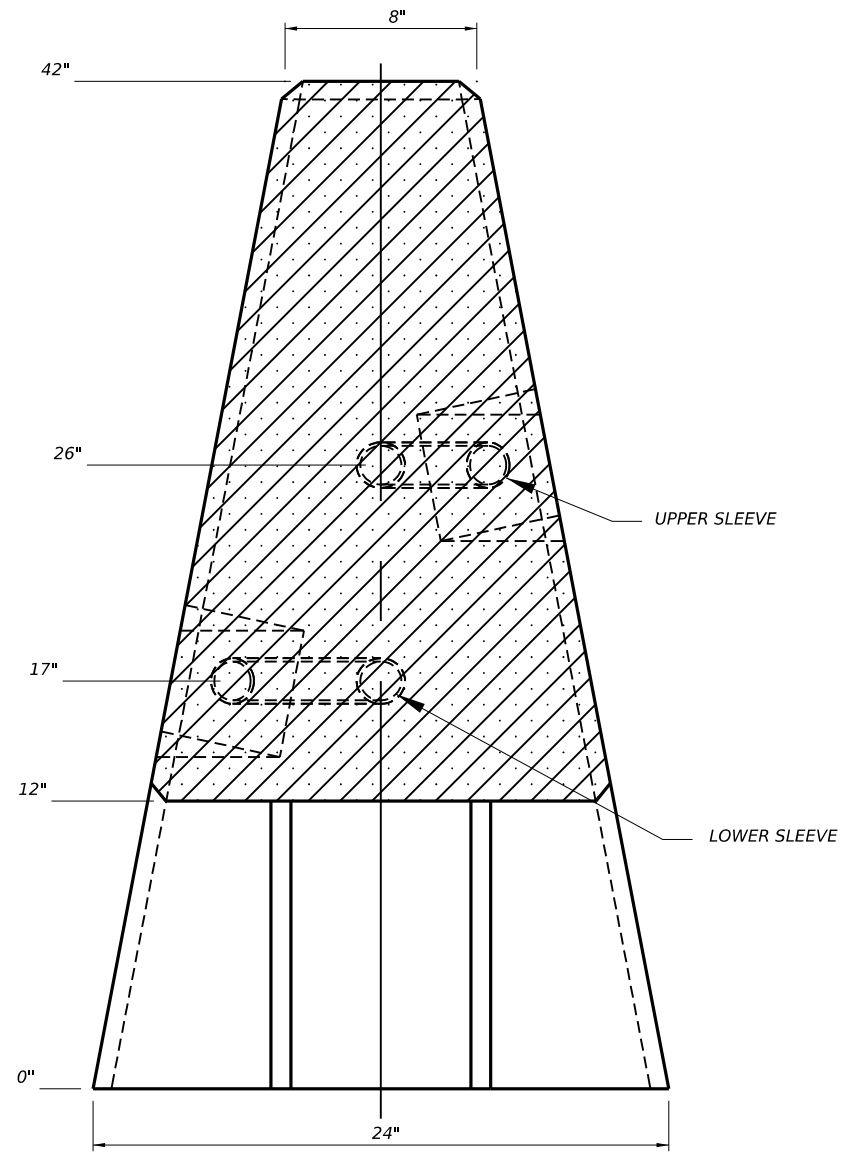
DATE:
FILE:

SHEET 1 OF 5

		Design Division Standard	
PRECAST HYDRAULIC EFFICIENT BARRIER MASH TL-4			
PRECAST HEB-26			
FILE: Precast HEB26.dgn	DN: TxDOT	CK: NM	DW: CES
© TxDOT: May 2026	CONT	SECT	JOB
REVISIONS		HIGHWAY	
DIST	COUNTY	SHEET NO.	

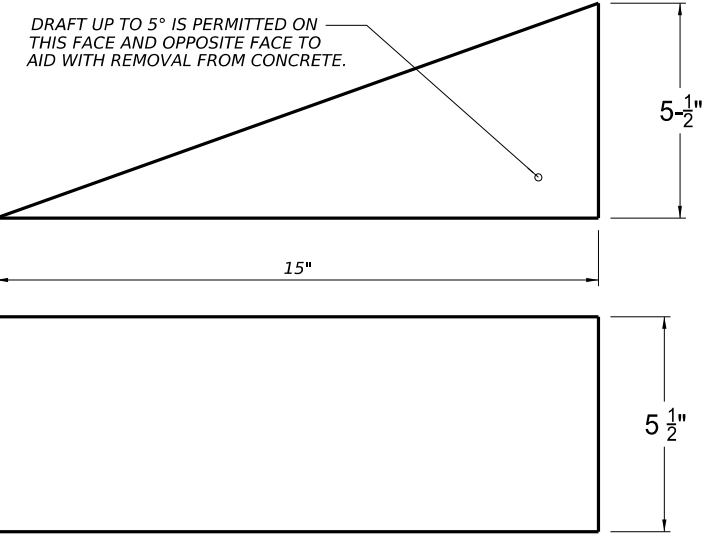
DISCLAIMER:
 The use of this standard is governed by the "Texas Engineering Practice Act". No warranty of any kind is made by TxDOT for any purpose whatsoever.
 TxDOT assumes no responsibility for the conversion of this standard to other formats or for incorrect results or damages resulting from its use.

DATE:
 FILE:

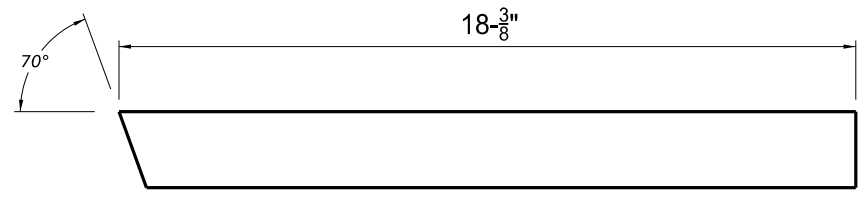
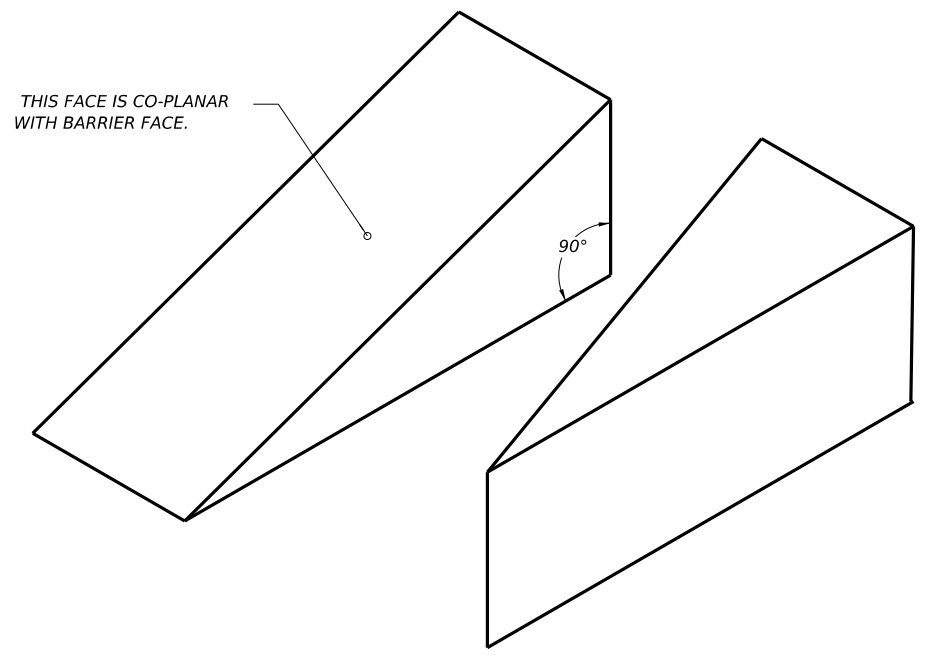


SECTION D-D

PARTS

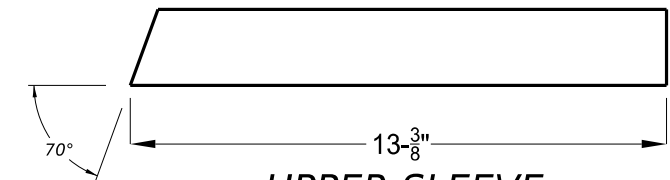


LEAVE-OUT BLOCK



LOWER SLEEVE

PIPE, 1-1/2" SCH. 40 PVC RIGID



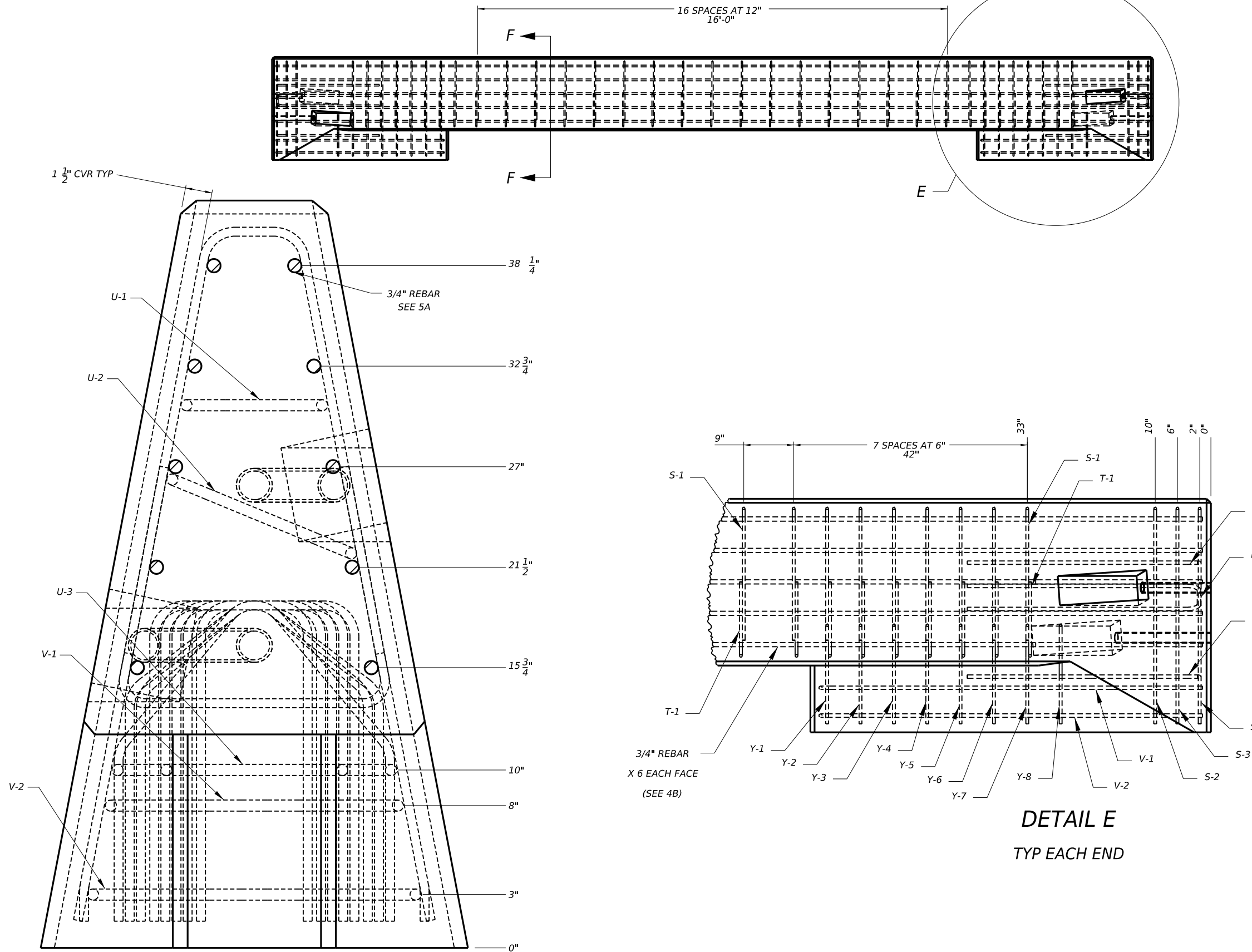
UPPER SLEEVE

PIPE, 1-1/2" SCH. 40 PVC RIGID

		Design Division Standard		
PRECAST HYDRAULIC EFFICIENT BARRIER MASH TL-4				
PRECAST HEB-26				
FILE: Precast HEB26.dgn	DN: TxDOT	CK: NM	DW: CES	CK:
© TxDOT: May 2026	CONT	SECT	JOB	HIGHWAY
REVISIONS		DIST	COUNTY	SHEET NO.

DISCLAIMER:
The use of this standard is governed by the "Texas Engineering Practice Act". No warranty of any kind is made by TxDOT for any purpose whatsoever. TxDOT assumes no responsibility for the conversion of this standard to other formats or for incorrect results or damages resulting from its use.

DATE:
FILE:



SECTION F-F

DETAIL E
TYP EACH END

- 4A. ALL REBAR IS GRADE 60. REBAR DIMENSIONS ARE TO CENTER UNLESS OTHERWISE INDICATED BY "CVR" (COVER).
- 4B. 22-1/2" LAPS ON LONGITUDINAL BARS. LONGITUDINAL BARS HAVE 1-1/2" COVER AT ENDS, EXCEPT 31-1/2" COVER AT CONNECTION POCKETS (SEE ISOMETRIC VIEWS SHEET).
- 4C. LENGTHS IN TABLE ABOVE ARE FOR REFERENCE ONLY, AND DO NOT SUPERSEDE DIMENSIONS ON FOLLOWING SHEETS. LONGITUDINAL BARS NOT SHOWN IN TABLE.

- 5A. TEN LONGITUDINAL BARS; SIX FULL LENGTH AND FOUR SHORTER BARS AT CONNECTION POCKETS (SEE PREVIOUS SHEET AND NEXT SHEET).

Bar Name	Length	QTY.
Y-1	40"	2
Y-2	41 1/2"	2
Y-3	42 3/4"	2
Y-4	44"	2
Y-5	45 1/4"	2
Y-6	41 3/4"	2
Y-8	41 3/4"	2
V-2	141 1/2"	2
V-1	141 1/2"	2
Y-7	42 3/4"	2
S-3	83"	4
S-2	83"	2
T-1	40 1/2"	33
S-1	52 1/2"	33
U-1	89"	2
U-2	92 1/4"	2
U-3	97 1/4"	2

SHEET 3 OF 5



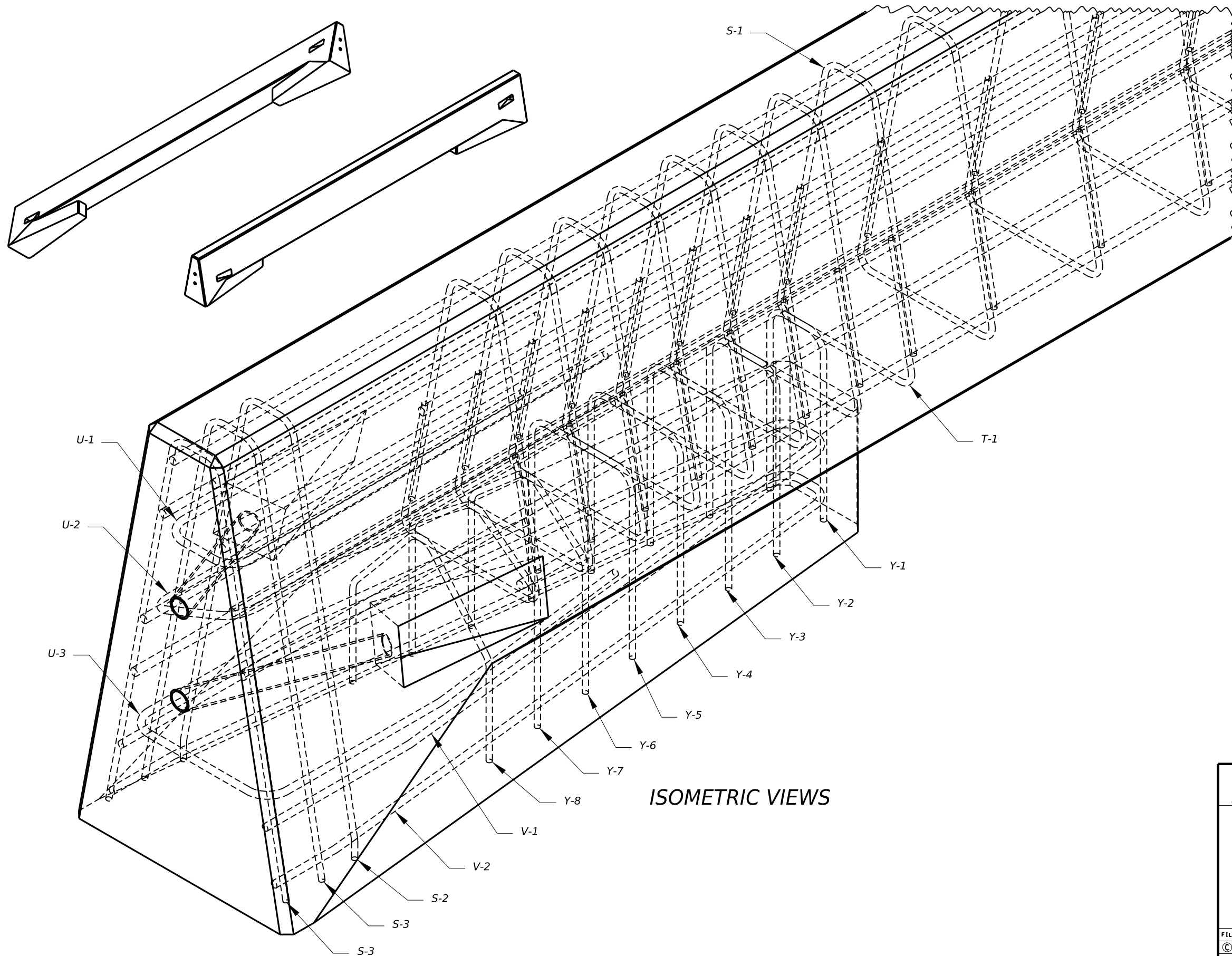
**PRECAST
HYDRAULIC EFFICIENT
BARRIER
MASH TL-4**

PRECAST HEB-26

FILE: Precast HEB26.dgn	DN: TxDOT	CK: NM	DN: CES	CK:
© TxDOT: May 2026	CONT	SECT	JOB	HIGHWAY
REVISIONS				
DIST	COUNTY			SHEET NO.

DISCLAIMER:
 The use of this standard is governed by the "Texas Engineering Practice Act". No warranty of any kind is made by TxDOT for any purpose whatsoever.
 TxDOT assumes no responsibility for the conversion of this standard to other formats or for incorrect results or damages resulting from its use.

DATE:
 FILE:



ISOMETRIC VIEWS



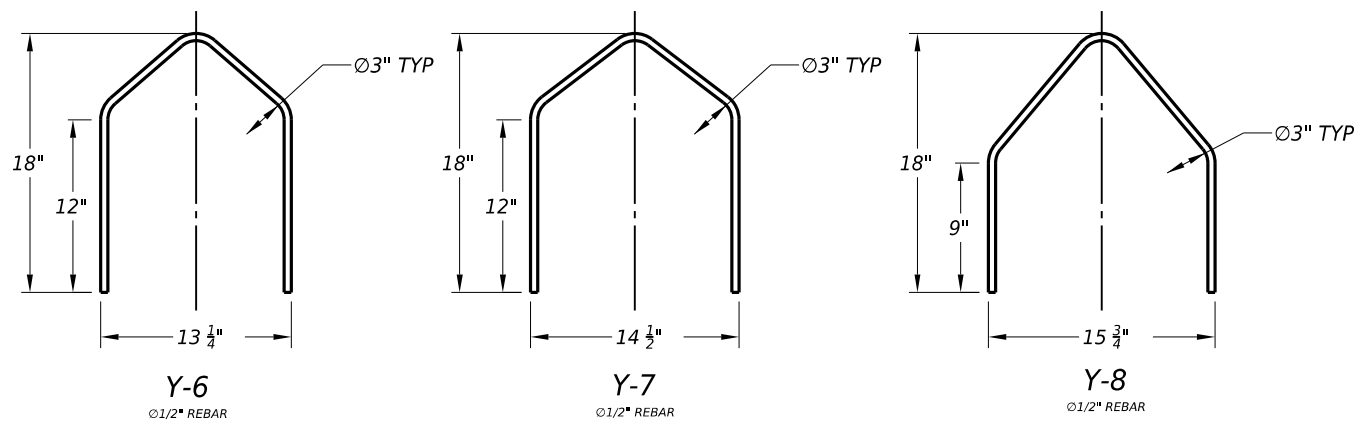
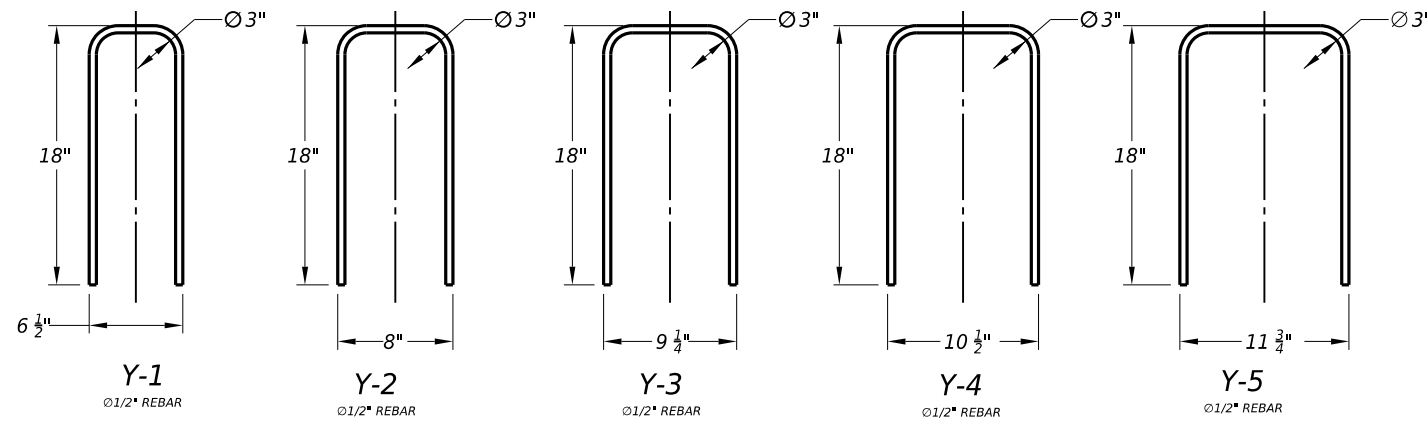
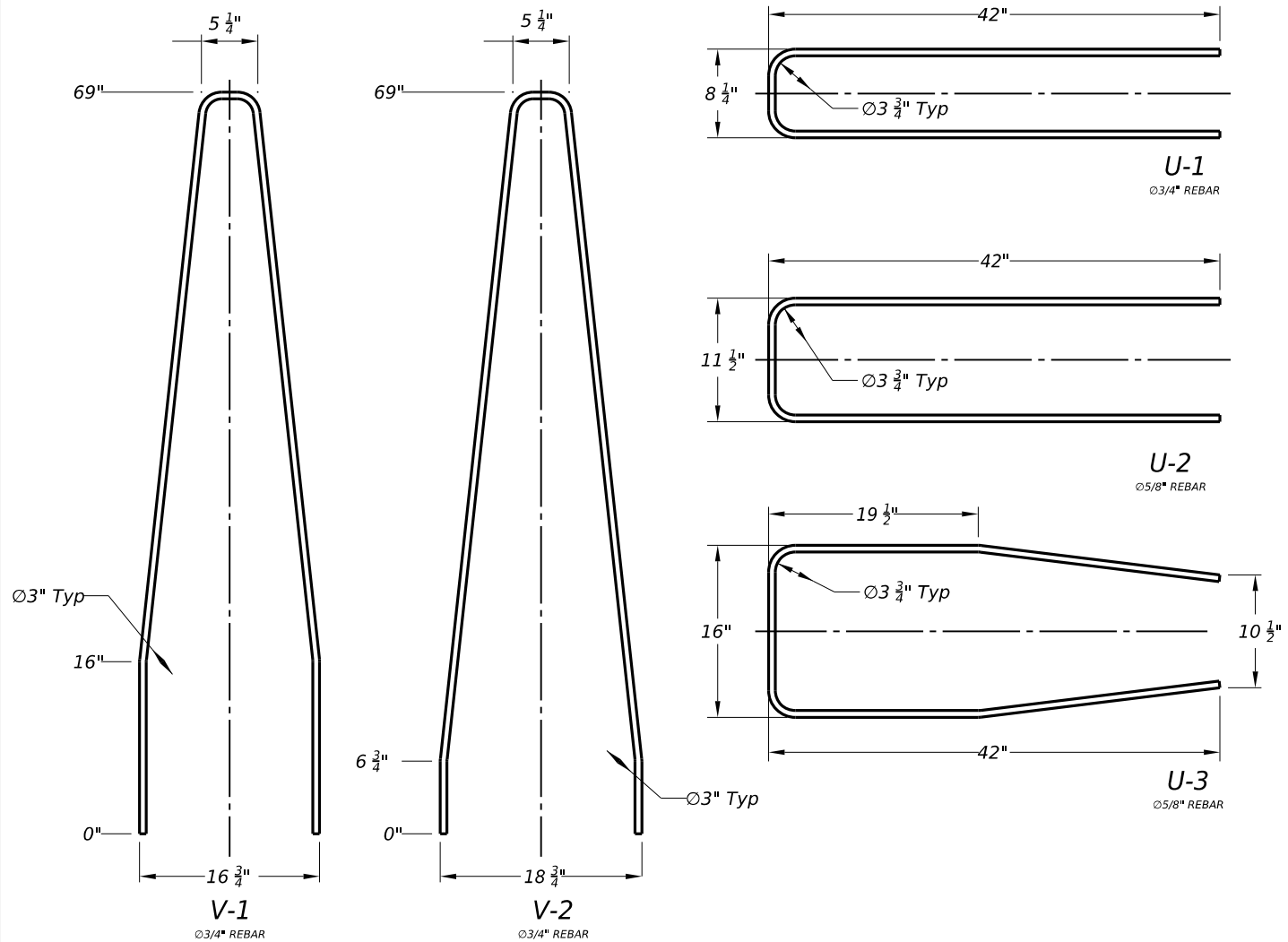
**PRECAST
 HYDRAULIC EFFICIENT
 BARRIER
 MASH TL-4**

PRECAST HEB-26

FILE: Precast HEB26.dgn	DN: TxDOT	CK: NM	DW: CES	CK:
© TxDOT: May 2026	CONT	SECT	JOB	HIGHWAY
REVISIONS				
DIST	COUNTY		SHEET NO.	

DISCLAIMER:
 The use of this standard is governed by the "Texas Engineering Practice Act". No warranty of any kind is made by TxDOT for any purpose whatsoever. TxDOT assumes no responsibility for the conversion of this standard to other formats or for incorrect results or damages resulting from its use.

DATE:
 FILE:



**PRECAST
 HYDRAULIC EFFICIENT
 BARRIER
 MASH TL-4**

PRECAST HEB-26

FILE: Precast HEB26.dgn	DN: TxDOT	CK: KM	DW: CES	CK:
© TxDOT: May 2026	CONT	SECT	JOB	HIGHWAY
REVISIONS				
DIST	COUNTY			SHEET NO.