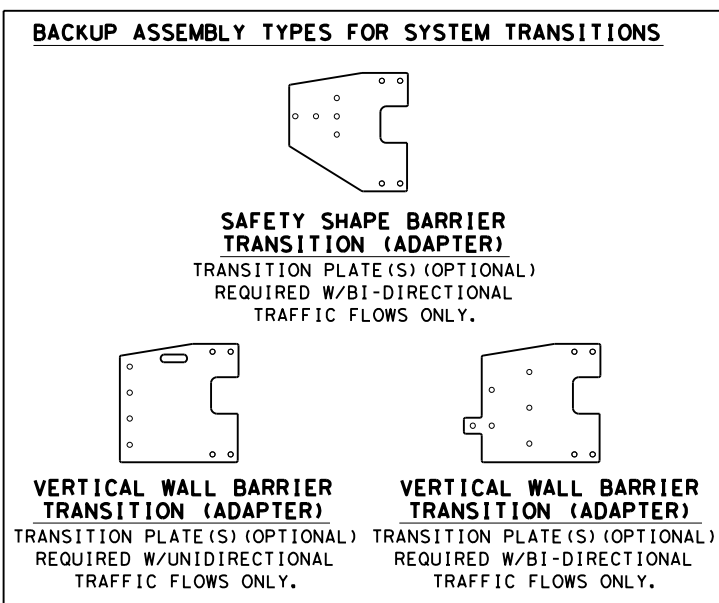
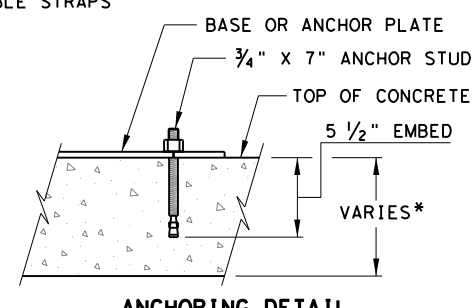
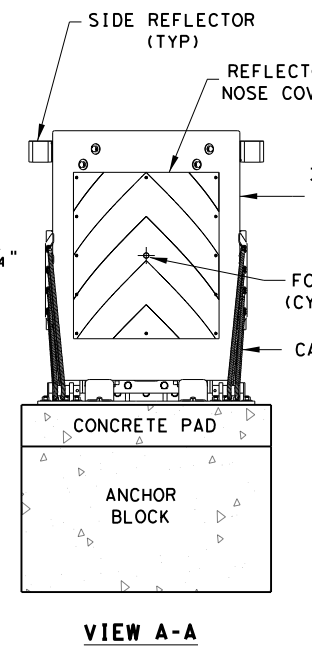
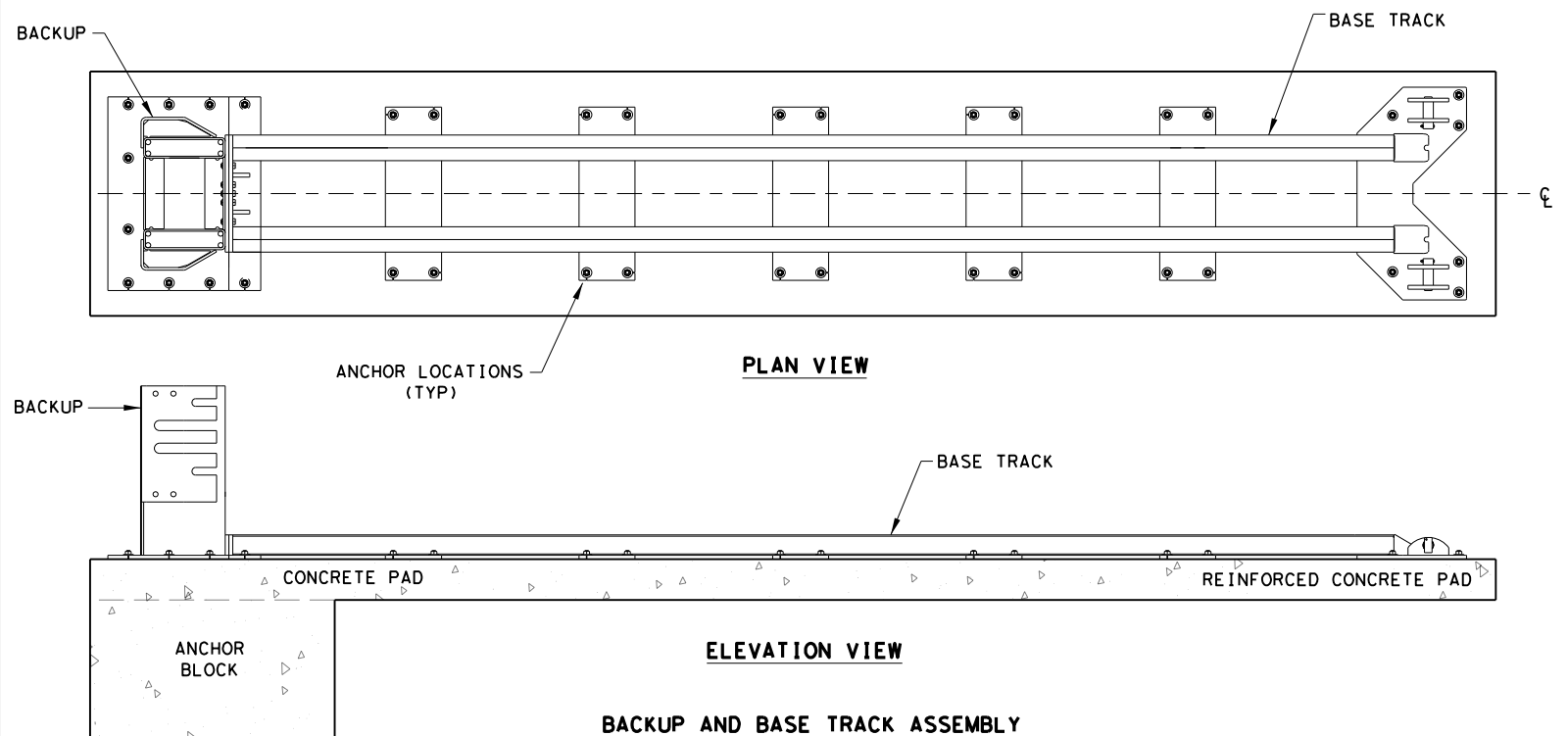
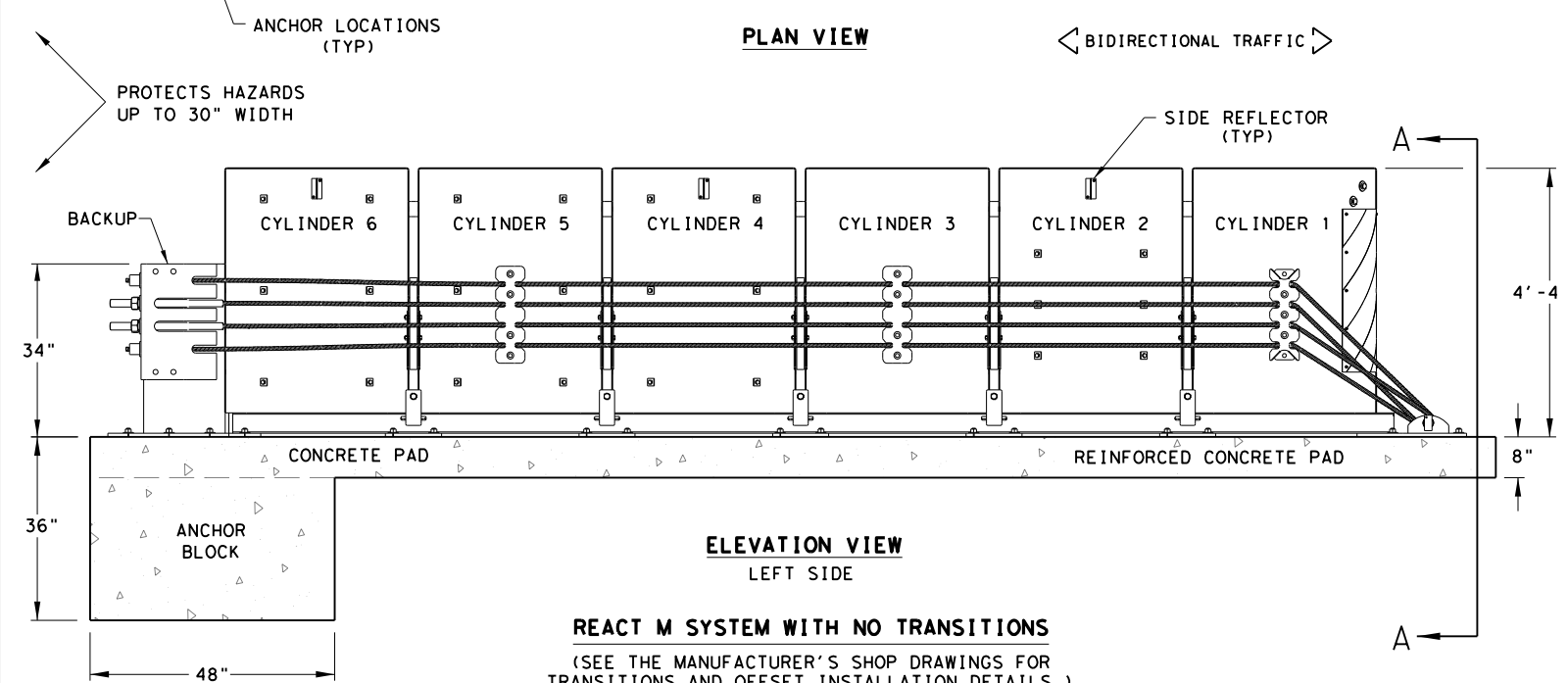
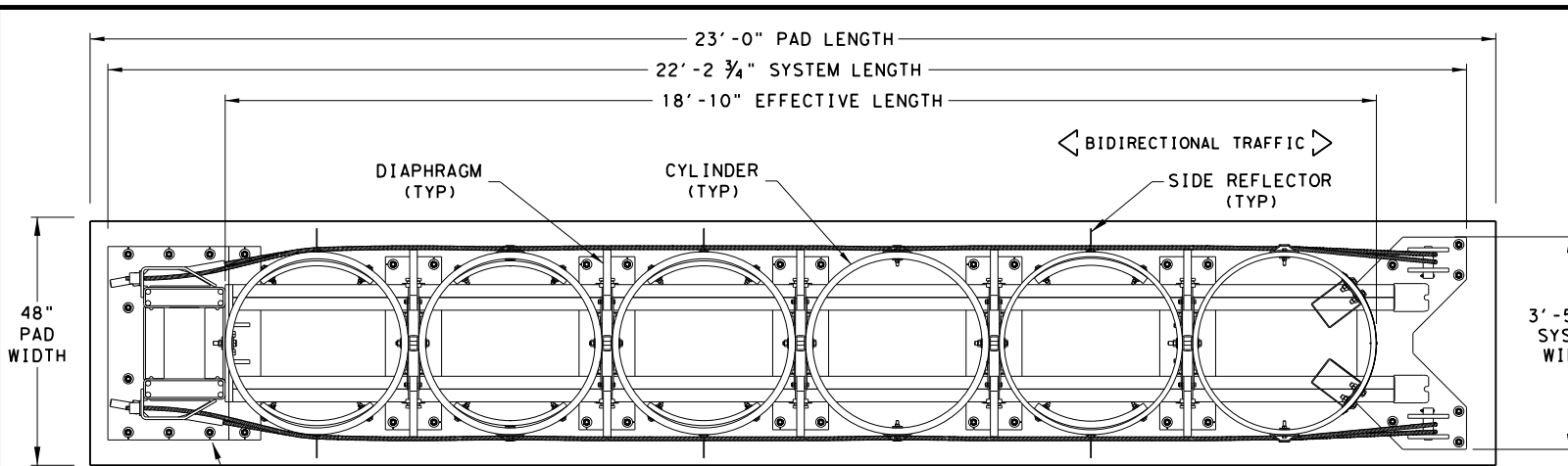


DISCLAIMER: The use of this standard is governed by the "Texas Engineering Practice Act". No warranty of any kind is made by TxDOT for any purpose whatsoever. TxDOT assumes no responsibility for the conversion of this standard to other formats or for incorrect results or damages resulting from its use.

DATE: FILE:



NOTES:
CONTACT THE MANUFACTURER WITH SITE SPECIFIC DATA (SSD) FOR THE CORRECT BACKUP ASSEMBLY AND TRANSITION PANELS OR SIDE PANELS USED FOR STANDARD AND BI-DIRECTIONAL INSTALLATIONS: AT DIVIDED-HIGHWAY MEDIANS OR UNDIVIDED ROADWAYS WHERE THE SYSTEM IS EXPOSED TO IMPACTS FROM ONE OR TWO DIFFERENT DIRECTIONS OF TRAFFIC FLOW.

- GENERAL NOTES**
- FOR SPECIFIC INFORMATION REGARDING INSTALLATION AND TECHNICAL GUIDANCE OF THE SYSTEM, CONTACT: TRINITY HIGHWAY - ENERGY ABSORPTION AT 1(888)323-6374 OR WEBSITE: www.trinityhighway.com.
 - THE NOSE OF THE REACT M SHALL BE CLAD WITH A PLASTIC WRAP WITH STANDARD DELINEATION ADHERED TO THE WRAP AND SHALL HAVE A SERIES OF SIDE MARKER REFLECTORS ON BOTH SIDES OF THE UNIT. SEE SITE PLAN VIEWS FOR MARKER AND PLASTIC WRAP COLOR ORIENTATION.
 - FOR BI-DIRECTIONAL TRAFFIC, APPROPRIATE TRANSITION DETAILS WILL BE AS SHOWN ON THE MANUFACTURER'S SHOP DRAWINGS.
 - DETAILS OF COMPONENTS FOR THE REACT M, BACKUPS AND REINFORCING DETAILS WILL BE SHOWN ON THE MANUFACTURER'S SHOP DRAWINGS FURNISHED TO THE ENGINEER.
 - IF THE CROSS-SLOPE VARIES MORE THAN 2% OVER THE LENGTH OF THE SYSTEM, THE CONCRETE PAD WILL REQUIRE LEVELING. MAXIMUM PERMISSIBLE CROSS-SLOPE IS 8%.
 - THE INSTALLATION AREA SHOULD BE FREE FROM CURBS, ELEVATED OBJECTS, OR DEPRESSIONS.
 - THE REACT M SYSTEM SHOULD BE APPROXIMATELY PARALLEL WITH THE BARRIER OR CENTERLINE OF MERGING BARRIERS.
 - ALL STEEL COMPONENTS TO BE HOT DIPPED GALVANIZED EXCEPT STAKES, DRIVE SPIKES, THREADED BOLTS IN BACKUP UNIT, AND WEDGE FITTINGS ON CABLES.
 - THIS DRAWING REPRESENTS THE REACT M TL-3 SYSTEM, RE-DIRECTIVE, NON-GATING CRASH CUSHION THAT CAN PROTECT HAZARDS UP TO 30-INCHES IN WIDTH.

DESIGN DATA TABLE FOR REACT M

TEST NUMBER	TEST LEVEL	OVERALL LENGTH	TRANSITION LENGTH	SYSTEM WIDTH
3-30 To 3-36	TL-3	22'-2 3/4"	-	3'-5 3/4"
3-37A	TL-3	22'-2 3/4"	9'-10 3/4"	3'-5 3/4"
3-38	TL-3	22'-2 3/4"	-	3'-5 3/4"

ANCHOR SYSTEM TYPE

APPROVED ADHESIVE, 7" STUDS, 5.5" EMBEDMENT

FOUNDATION TYPES

MINIMUM 8" REINFORCED PORTLAND CEMENT CONCRETE PAD (REQUIRED REINFORCING STEEL FOR CONCRETE PAD SHALL BE SHOWN ON THE MANUFACTURER'S SHOP DRAWINGS.)

MINIMUM 8" NON-REINFORCED PORTLAND CEMENT CONCRETE ROADWAY MEASURING AT LEAST 12' WIDE BY 50' LONG)

MINIMUM 7" CONCRETE DECK STRUCTURE, OR MINIMUM 6" REINFORCED CONCRETE ROADWAY

NOTE:
THIS STANDARD IS A BASIC REPRESENTATION OF THE REACT M SYSTEM AND IS NOT INTENDED TO REPLACE THE PRODUCT DESCRIPTION ASSEMBLY MANUAL.

Texas Department of Transportation *Design Division Standard*

TRINITY HIGHWAY ENERGY ABSORPTION CRASH CUSHION REACT M (NARROW) (MASH TL-3) REACT (M) -21

FILE: reactm21.dgn	DN: TxDOT	CK: KM	DW: SS	CK: CL
© TxDOT: JULY 2021	CONT	SECT	JOB	HIGHWAY
REVISIONS				
	DIST	COUNTY		SHEET NO.

LOW MAINTENANCE