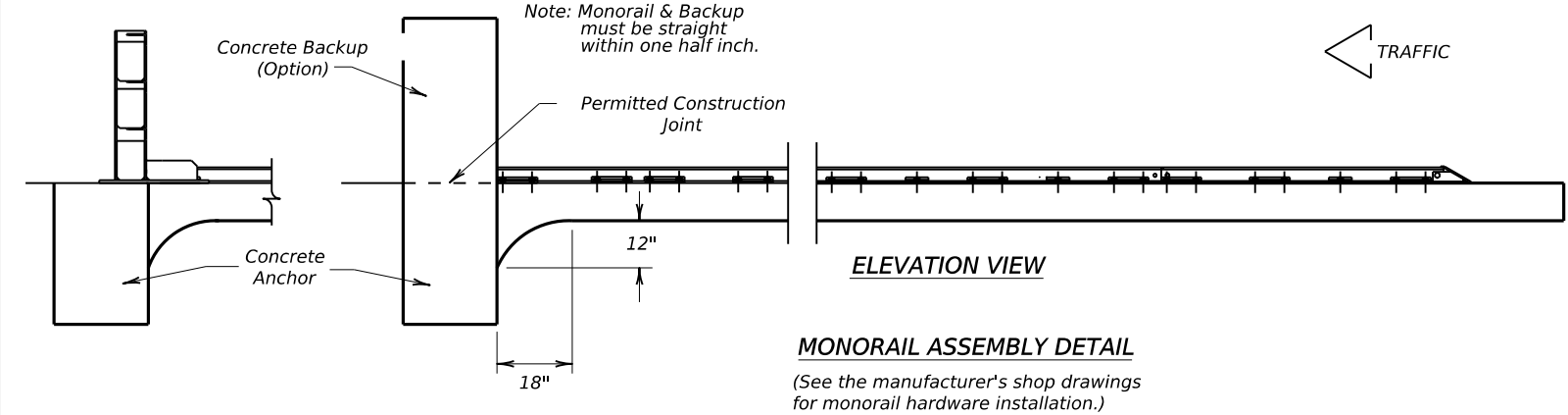
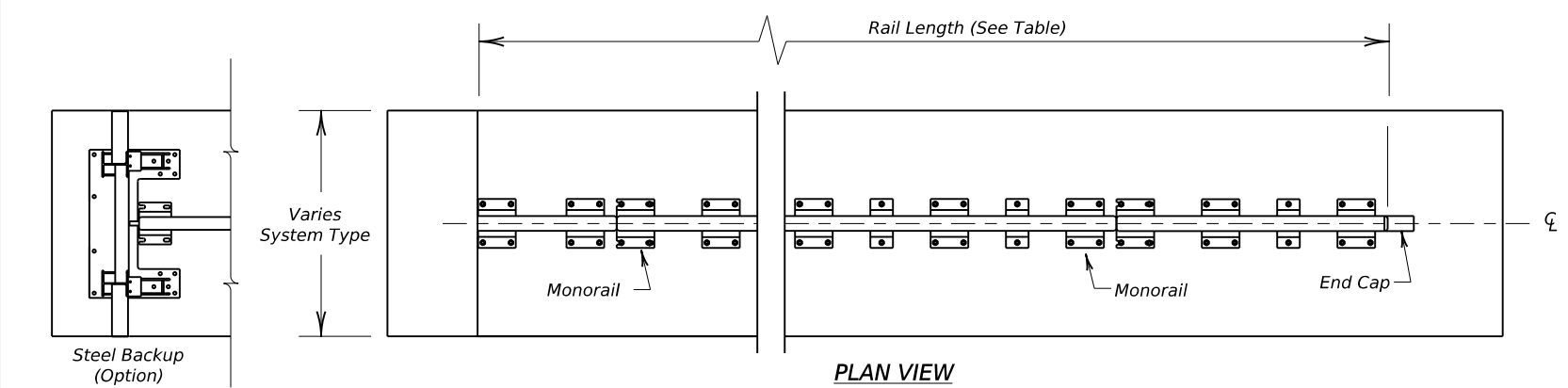
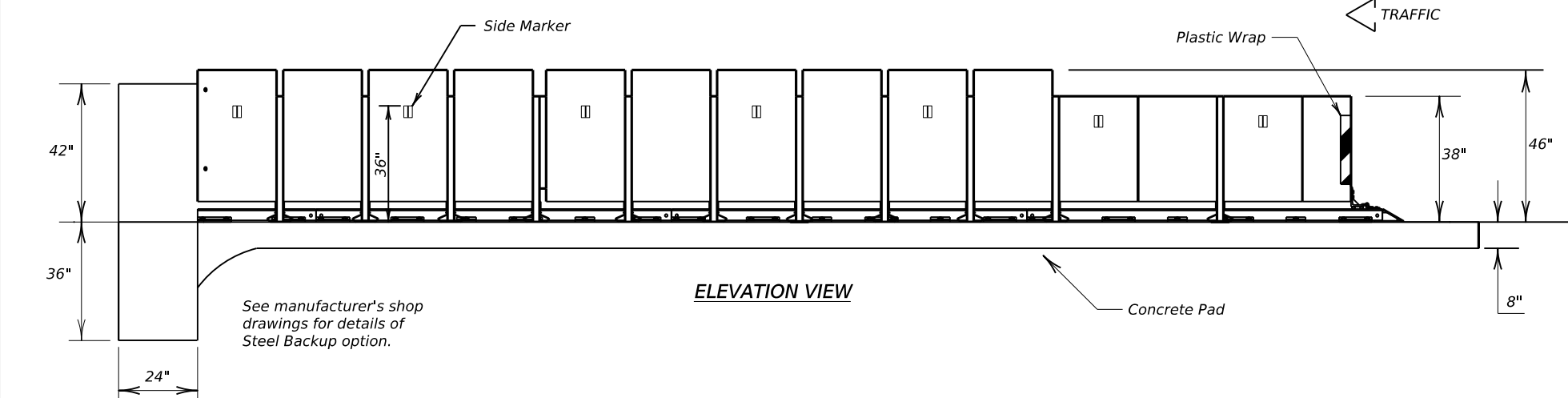
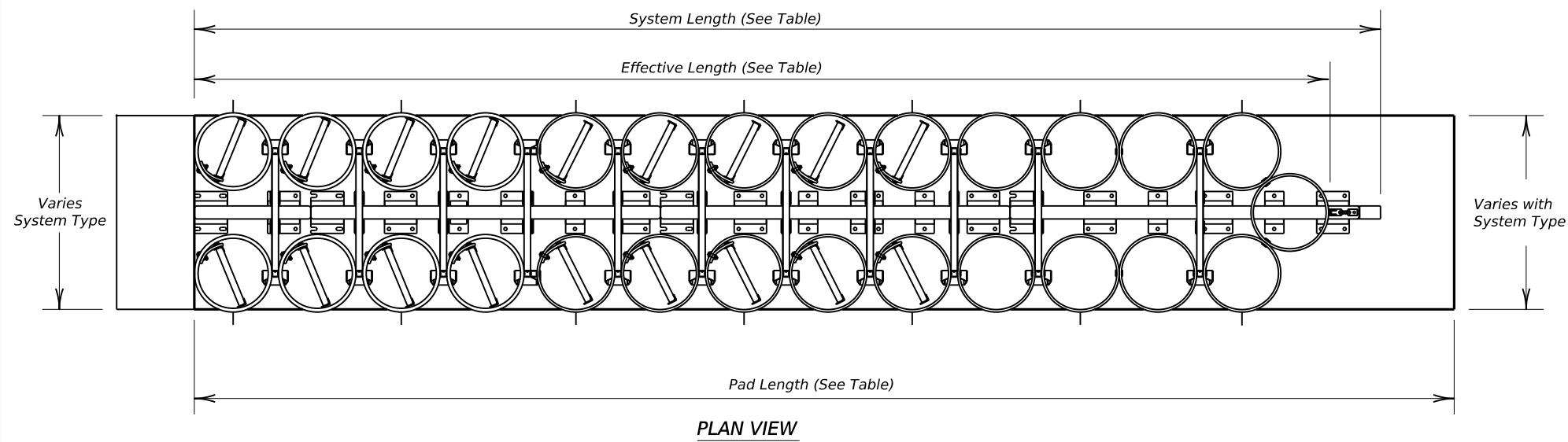


DISCLAIMER: The use of this standard is governed by the "Texas Engineering Practice Act". No warranty of any kind is made by TxDOT for any purpose whatsoever. TxDOT assumes no responsibility for the conversion of this standard to other formats or for incorrect results or damages resulting from its use.



MONORAIL ASSEMBLY DETAIL
(See the manufacturer's shop drawings for monorail hardware installation.)

GENERAL NOTES

1. For specific information regarding installation and technical guidance of the system, contact: Trinity Highway - Energy Absorption at 1(888)323-6374. 70 W. Madison St. Suite 2350. Chicago, IL 60602
2. The nose of the REACT 350 shall be clad with a plastic wrap with standard delineation adhered to the wrap and shall have a series of side marker reflectors on both sides of the unit. See site plan views for marker and plastic wrap color orientation.
3. For bi-directional traffic, appropriate transition details will be as shown on the manufacturer's shop drawings.
4. Details of components for the REACT(W) and backups and reinforcing detail will be shown on the manufacturer's shop drawings furnished to the Engineer.
5. If the cross-slope varies more than 2% over the length of the system, the concrete pad will require leveling. Maximum permissible cross-slope is 8%.
6. The installation area should be free from curbs, elevated objects, or depressions.
7. The REACT(W) system should be approximately parallel with the barrier or centerline of merging barriers.
8. All steel components to be hot dipped galvanized except stakes, drive spikes, threaded bolts in backup unit, and wedge fittings on cables.

WIDE REACT SYSTEMS					
SYSTEM TYPE	BACKUP WIDTH	TEST LEVEL	SYSTEM LENGTH	EFFECTIVE LENGTH	PAD LENGTH
W60	60"	TL-2	18'-10"	16'-3"	19'-6"
		TL-3	30'-10"	29'-3"	32'-6"
W96	96"	TL-2	18'-10"	17'-6"	19'-7"
		TL-3	34'-9"	32'-10"	35'-6"
W120	120"	TL-3	33'-10"	32'-2"	35'-6"

(See the manufacturer's shop drawings for additional details.)

<p>ANCHOR SYSTEM TYPE</p> <p>MP-3[®] polyester anchoring system with 7.5" studs, 5.5" embedment</p>
<p>FOUNDATION TYPES</p> <p>Minimum 8" Reinforced concrete pad (Required reinforcing steel for concrete pad shall be shown on the manufacturer's shop drawings.)</p> <p>Minimum 8" Non-reinforced concrete roadway (Measuring at least 12' wide by 50' long)</p> <p>Minimum 7" Concrete deck structure, or Minimum 6" Reinforced concrete roadway</p>

		Design Division Standard	
<p>TRINITY HIGHWAY ENERGY ABSORPTION CRASH CUSHION (REACT 350 WIDE) REACT (W) - 16</p>			
FILE: reactw16.dgn	DN: TxDOT	CK: KM	DW: VP
©TxDOT: October 2001	CONT	SECT	JOB
REVISIONS	DIST		COUNTY
REVISED 03, 2016 (VP)	SHEET NO.		

LOW MAINTENANCE

DATE:
FILE: