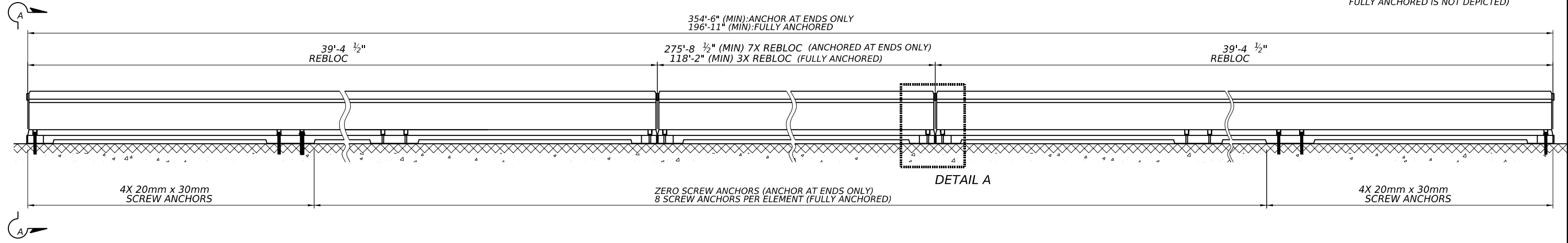
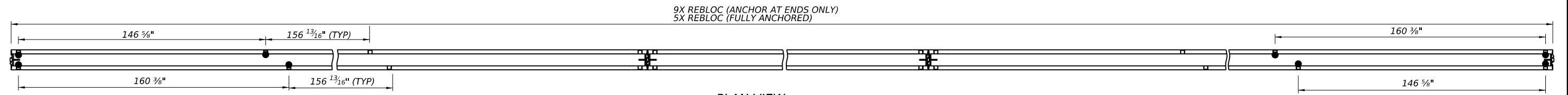


SEE SHEET 3 FOR GENERAL NOTES

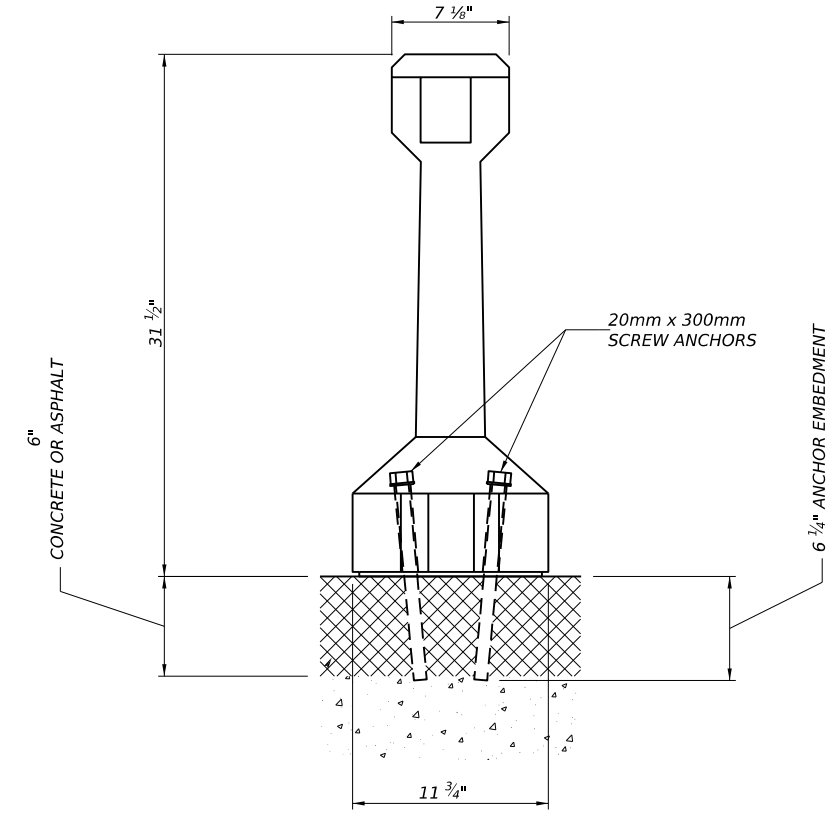
(DEPICTS ANCHORS AT ENDS ONLY  
FULLY ANCHORED IS NOT DEPICTED)



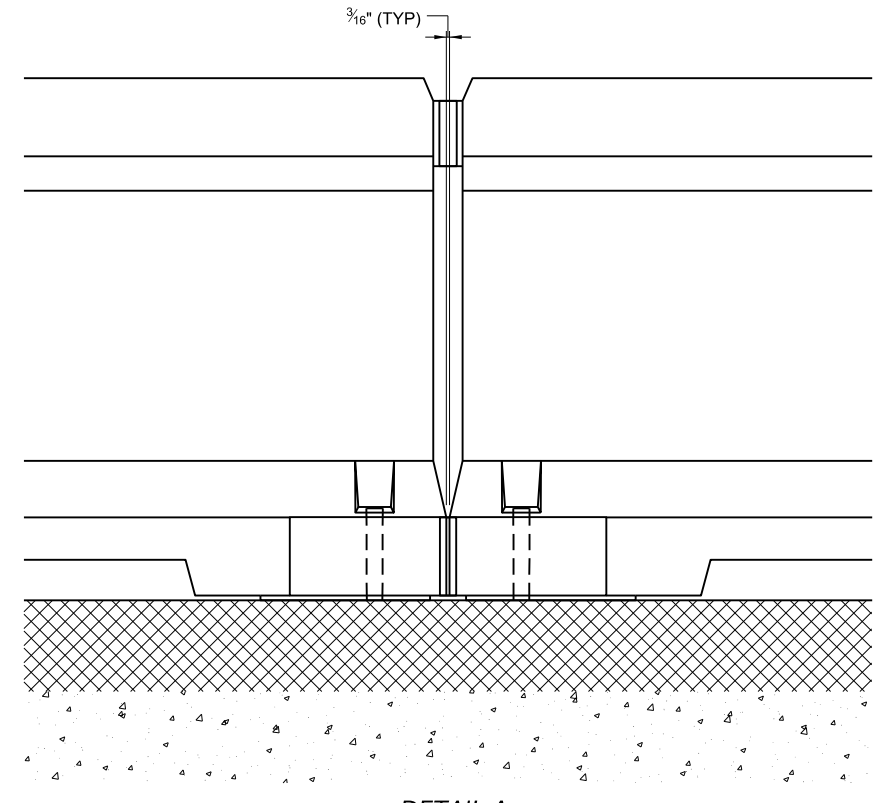
ELEVATION VIEW



PLAN VIEW



VIEW A-A



DETAIL A

REBLOC 80SAH_12 STANDARD DEFLECTION SYSTEM		
ANCHOR SPACING	DYNAMIC DEFLECTION	WORKING WIDTH
ANCHORED AT THE ENDS ONLY. SEE PLAN VIEW FOR DIMENSIONS	51.6"	61.4"

REBLOC 80SAH_12_8B MINIMUM DEFLECTION SYSTEM		
ANCHOR SPACING	DYNAMIC DEFLECTION	WORKING WIDTH
ALL ELEMENTS ARE ANCHORED, SEE PLAN VIEW FOR DIMENSIONS	11"	23.2"

DISCLAIMER:  
The use of this standard is governed by the "Texas Engineering Practice Act". No warranty of any kind is made by TxDOT for any purpose whatsoever. TxDOT assumes no responsibility for the conversion of this standard to other formats or for incorrect results or damages resulting from its use.

DATE:  
FILE:

SHEET 1 OF 3

Texas Department of Transportation  
Design Division Standard

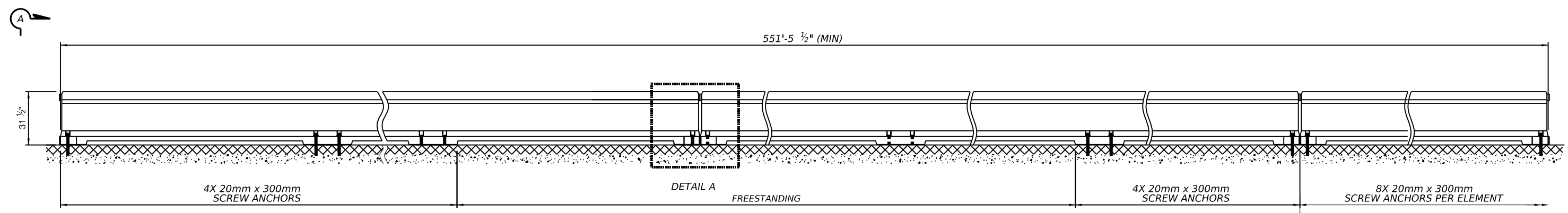
## REBLOC 80SAH\_12 (MASH TL-3)

### REBLOC (TL-3) -25

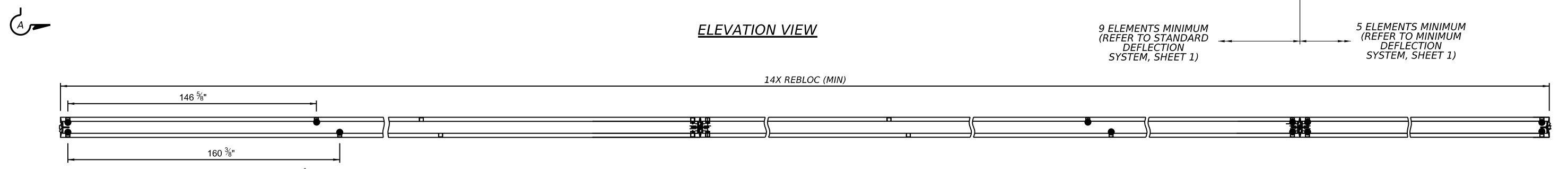
FILE: rebloc1325.dgn	DN: TxDOT	CK: KM	DW: CES	CK: AG
© TxDOT: November 2025	CONT	SECT	JOB	HIGHWAY
REVISIONS	DIST	COUNTY	SHEET NO.	

SEE SHEET 3 FOR GENERAL NOTES

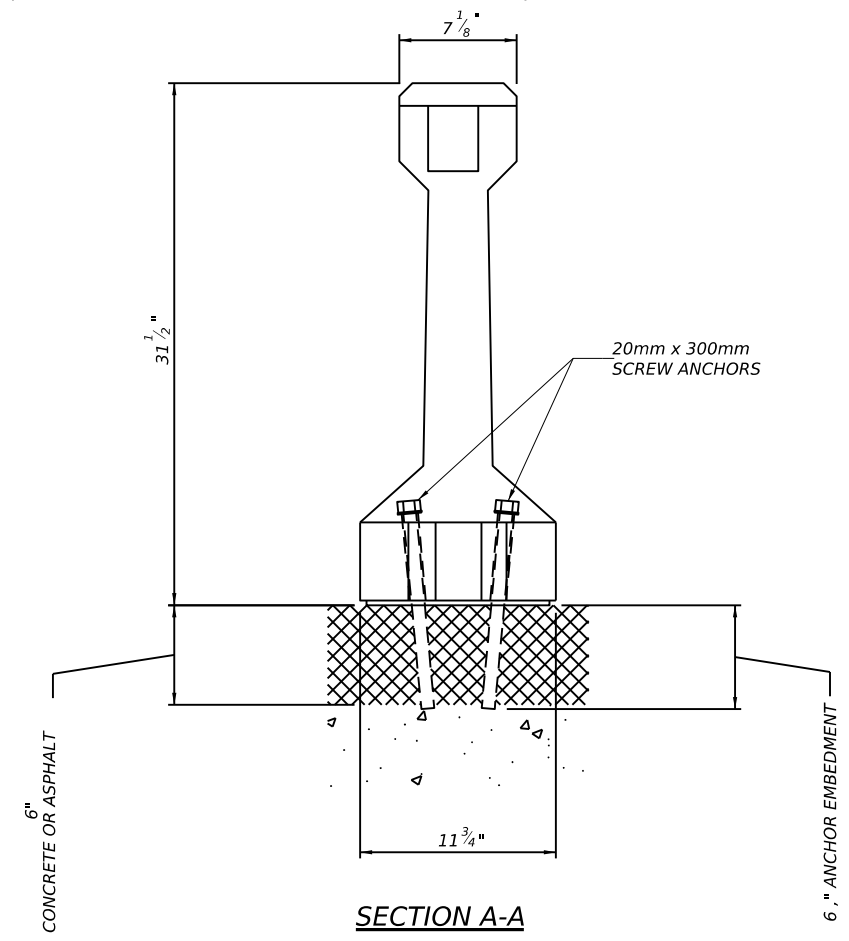
TRANSITION FROM STANDARD  
TO MINIMUM DEFLECTION



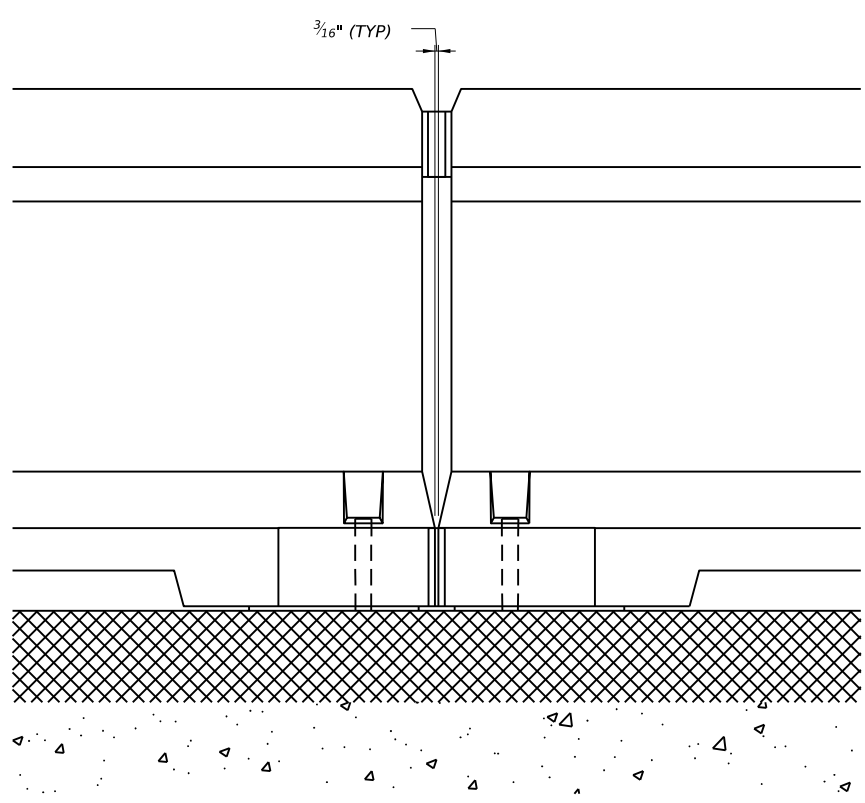
ELEVATION VIEW



PLAN VIEW



SECTION A-A



DETAIL A

DISCLAIMER: The use of this standard is governed by the "Texas Engineering Practice Act". No warranty of any kind is made by TxDOT for any purpose whatsoever. TxDOT assumes no responsibility for the conversion of this standard to other formats or for incorrect results or damages resulting from its use.

DATE:  
FILE:

SHEET 2 OF 3

Texas Department of Transportation Design  
Division  
Standard

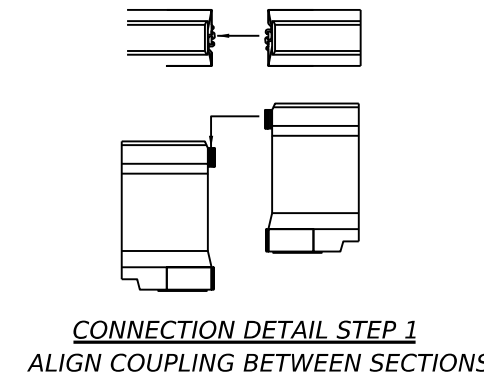
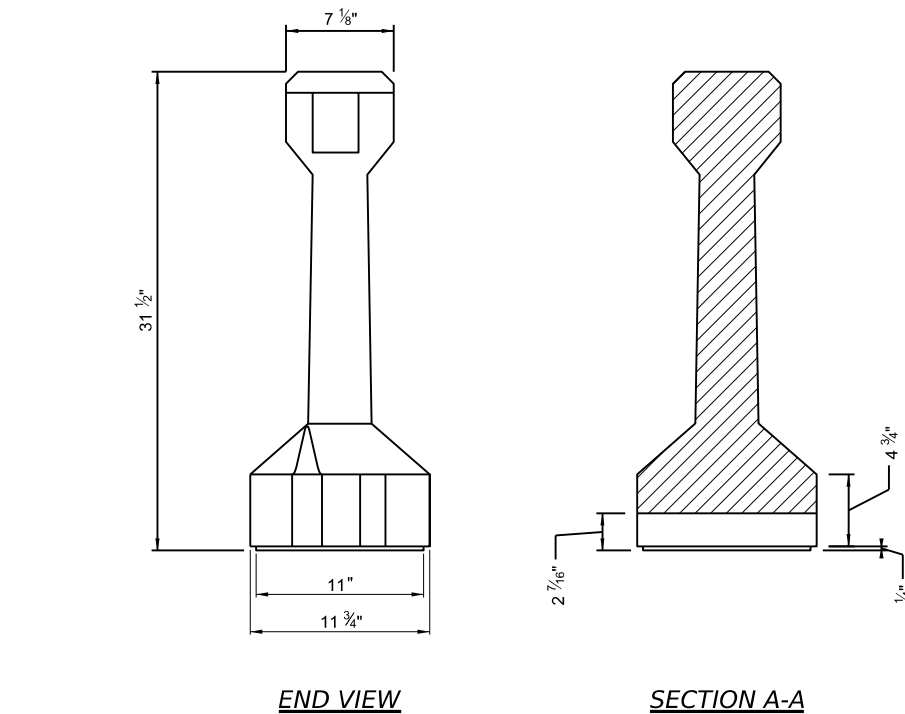
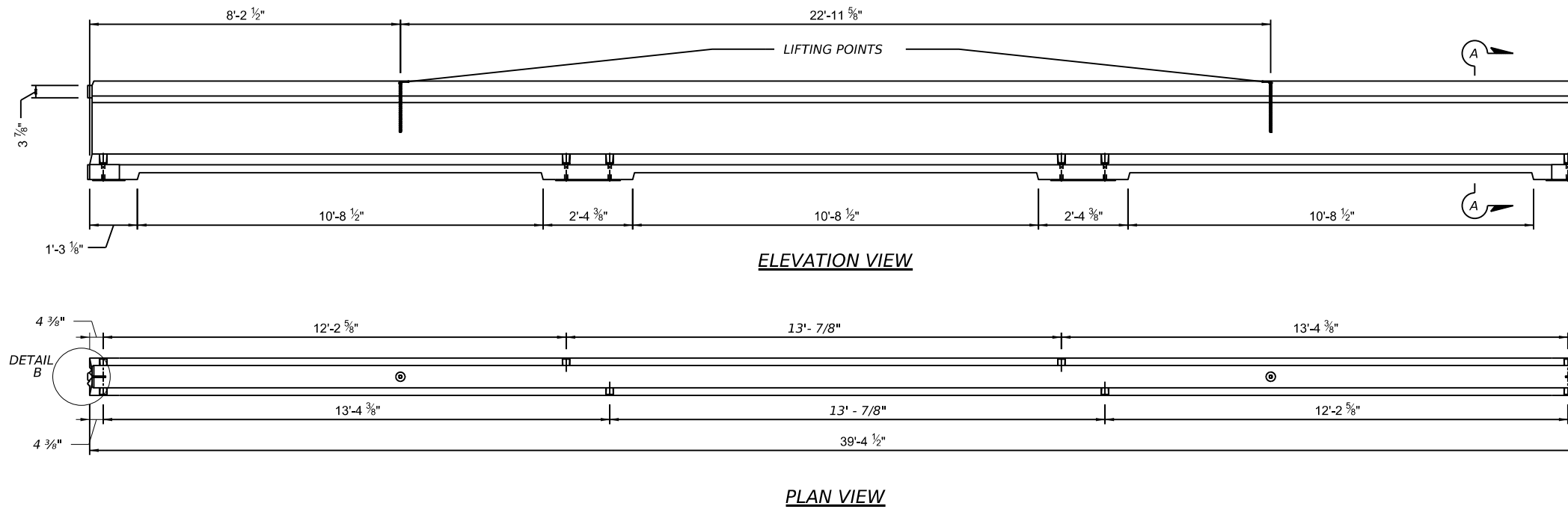
**REBLOC 80SAH\_12  
(MASH TL-3)**

**REBLOC (TL-3) -25**

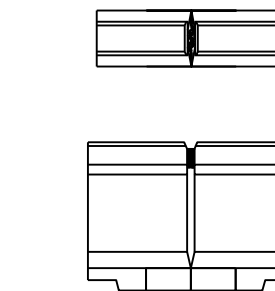
FILE: rebloc+1325.dgn	DN: TxDOT	CK: KM	DW: CES	CR: AG
© TxDOT: November 2025	CONT	SECT	JOB	HIGHWAY
REVISIONS	DIST	COUNTY	SHEET NO.	

DISCLAIMER: The use of this standard is governed by the "Texas Engineering Practice Act". No warranty of any kind is made by TxDOT for any purpose whatsoever. TxDOT assumes no responsibility for the conversion of this standard to other formats or for incorrect results or damages resulting from its use.

DATE:  
FILE:



**CONNECTION DETAIL STEP 1**  
ALIGN COUPLING BETWEEN SECTIONS



**CONNECTION DETAIL STEP 2**  
LOWER INTO PLACE

**GENERAL NOTES**

1. THE SYSTEM SHOWN ON THIS DRAWING IS A PROPRIETARY BARRIER TRADED AS REBLOC 80SAH\_12, DESIGNED AND MANUFACTURED BY REBLOC, INC. FOR TECHNICAL ASSISTANCE AND APPLICATION SUPPORT CONTACT REBLOC, INC. AT (302) 844-2040 OR inquiry@rebloc.com
2. THE REBLOC 80SAH\_12 HAS BEEN CRASH TESTED TO MASH TL-3. THE DEFLECTION TABLES OUTLINE ANTICIPATED BASIC SYSTEM PERFORMANCE FOR DIFFERENT ANCHORING CONFIGURATIONS. THE STANDARD DEFLECTION (ANCHORED AT THE END) IS REBLOC MODEL 80SAH\_12. THE MINIMUM DEFLECTION (FULLY ANCHORED) CONFIGURATION OF THE SAME BARRIER IS REBLOC MODEL 80SAH\_12\_BB.
3. THIS DRAWING PACKAGE PROVIDES THE RELEVANT INFORMATION AND GENERAL GRAPHICS REQUIRED TO IDENTIFY THE COMPONENT PARTS OF REBLOC 80SAH\_12 AND THEIR INCORPORATION AS A WHOLE SYSTEM FOR DEPARTMENTAL STANDARD APPLICATIONS.
4. INSTALLATION OF REBLOC 80SAH\_12 BARRIER MUST BE PROTECTED WITH A SUITABLE CRASH CUSHION END TREATMENT IF EXPOSED TO ONCOMING TRAFFIC. THE CRASH CUSHION CONNECTIONS ARE NOT DETAILED WITHIN THESE DRAWINGS, PLEASE CONTACT REBLOC, INC FOR MORE DETAILS.
5. THE FULL HEIGHT OF REBLOC 80SAH\_12 BARRIER 39'-4" SEGMENT IS 31.5".
6. THE MINIMUM RADIUS OF THE REBLOC 80SAH\_12 BARRIER INSTALLTION IS 853 FT. SHORTER BARRIER SEGMENT LENGTHS ARE AVAILABLE FOR TIGHTER CURB RADII. FOR FURTHER INFORMATION CONTACT REBLOC, INC.
7. USING REBLOC 80SAH\_12 BARRIER ON BRIDGE STRUCTURES, POSSIBLE ANCHORING SHOULD TAKE PLACE OFF BRIDGE DECKS. ANY ANCHORING ON BRIDGE DECKS NEEDS TO BE AGREED IN ADVANCE WITH THE TECHNICAL EXPERT RESPONSIBLE FOR THE BRIDGE TO ENSURE IT IS NOT DAMAGED. IF ANCHORING EITHER SIDE OF A BRIDGE DECK EXPANSION JOINT, THEN THIS MOVEMENT MUST BE MIRRORED IN THE BARRIER. FOR FURTHER INFORMATION AND ADVICE CONTACT REBLOC, INC.
8. THE REBLOC 80SAH\_12 BARRIER HAS BEEN MASH TESTED, USING 20MM X 300MM SCREW ANCHORS AND EMBEDDED 6 1/4" INTO ASPHALT. ALTERNATIVE GROUND EMBEDMENT CONDITIONS MAY BE ACCEPTABLE BUT MIGHT REQUIRE DIFFERENT ANCHOR SOLUTIONS, PLEASE CONTACT REBLOC, INC. FOR FURTHER INFORMATION.
9. ALL EXPOSED STEEL COMPONENTS ARE HOT-DIP GALVANIZED.
10. REBLOC 80SAH\_12 BARRIER SYSTEMS SHALL BE ASSEMBLED AND INSTALLED IN ACCORDANCE WITH THE MANUFACTURERS DETAILED DRAWINGS, PROCEDURES AND SPECIFICATIONS. FOR ANY INSTALLATIONS OUTSIDE OF THE SCOPE OF THESE DRAWINGS, PLEASE CONTACT REBLOC, INC. FOR DETAILS.
11. FOR ADDITIONAL INFORMATION ON ANCHORING LAYOUTS FOR, PLEASE SEE MANUFACTURER'S PRODUCT MANUAL OR CONTACT REBLOC, INC. FOR INFORMATION.

SHEET 3 OF 3

		<b>Design Division Standard</b>	
<h1>REBLOC80SAH_12 (MASH TL-3)</h1>			
<h2>REBLOC (TL-3) -25</h2>			
FILE: rebloc+1325.dgn	DN: TxDOT	CK: KM	DW: CES
© TxDOT: November 2025	CONT	SECT	JOB
REVISIONS		HIGHWAY	
DIST		COUNTY	
		SHEET NO.	