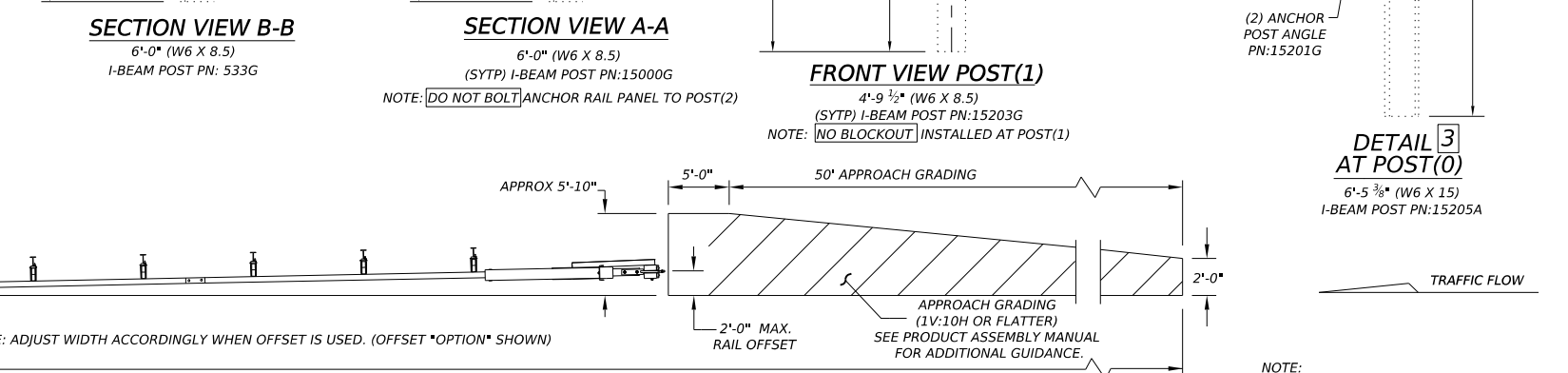
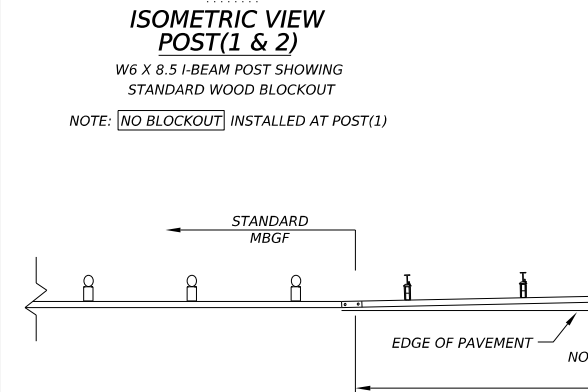
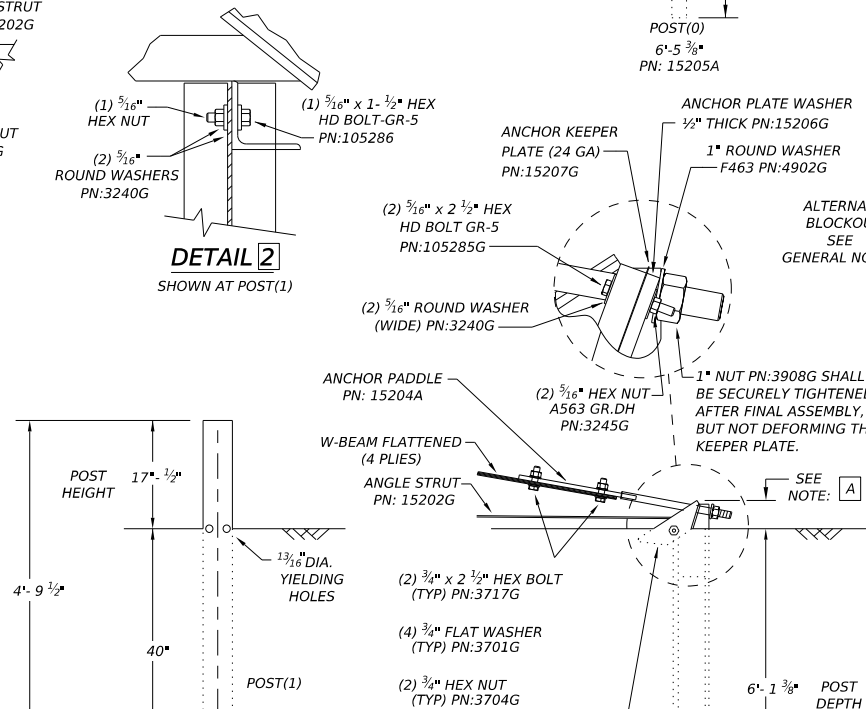
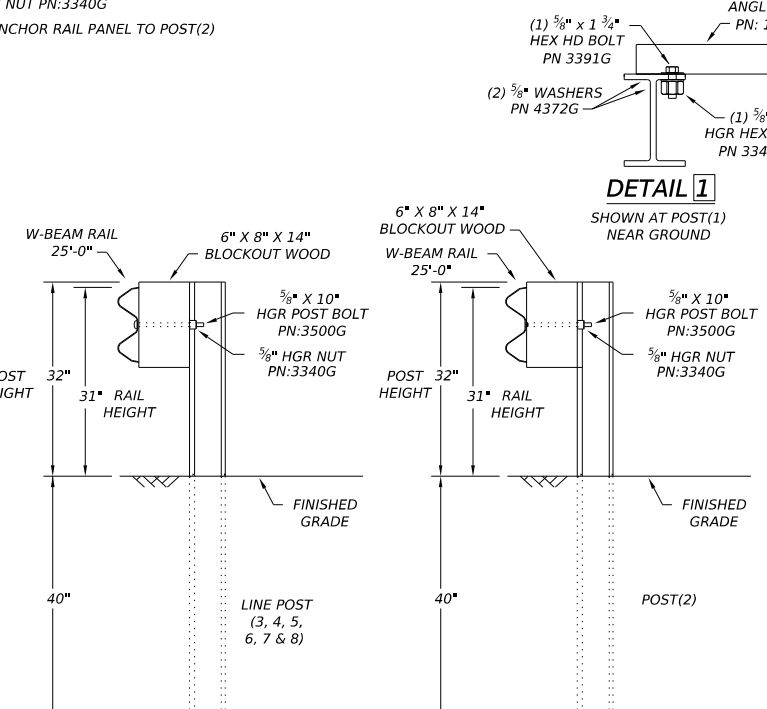
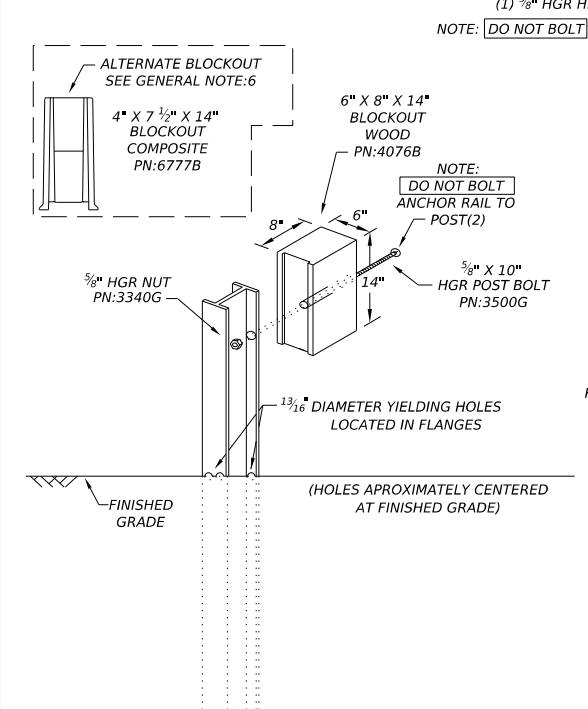
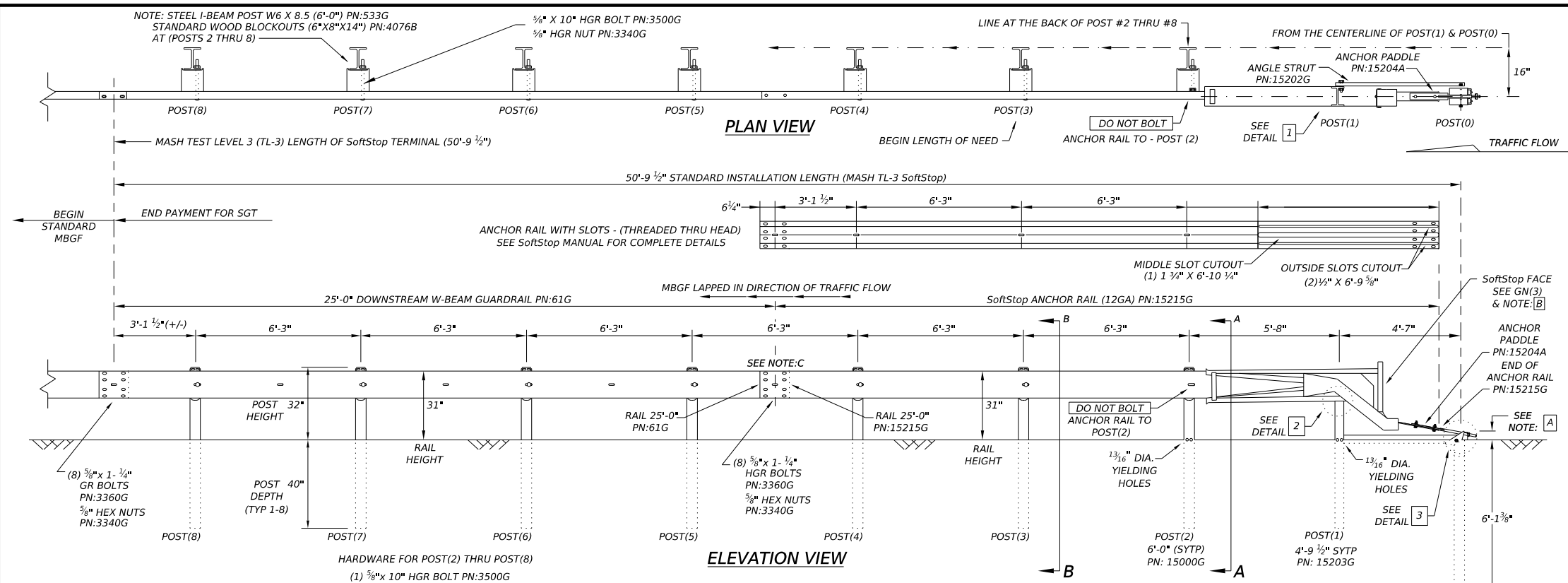


DISCLAIMER: The use of this standard is governed by the "Texas Engineering Practice Act". No warranty of any kind is made by TxDOT for any purpose whatsoever. TxDOT assumes no responsibility for the conversion of this standard to other formats or for incorrect results or damages resulting from its use.



**GENERAL NOTES**

- FOR SPECIFIC INFORMATION REGARDING INSTALLATION AND TECHNICAL GUIDANCE OF THE SYSTEM, CONTACT: TRINITY HIGHWAY AT 1(888)323-6374, 2525 N. STEMMONS FREEWAY, DALLAS, TX 75207
- FOR INSTALLATION, REPAIR AND MAINTENANCE REFER TO THE: SoftStop END TERMINAL, PRODUCT DESCRIPTION ASSEMBLY MANUAL, PN:620237B
- APPLY HIGH INTENSITY REFLECTIVE SHEETING, "OBJECT MARKER" ON THE FRONT FACE OF THE DEVICE PER MANUFACTURER'S RECOMMENDATIONS. OBJECT MARKER SHALL CONFORM TO THE STANDARDS REQUIRED IN TEXAS MUTCD.
- FOR POST (LEAVE-OUT) INSTALLATION AND GUIDANCE SEE TxDOT'S LATEST ROADWAY MOW STRIP STANDARD.
- HARDWARE (BOLTS, NUTS, & WASHERS) SHALL BE GALVANIZED IN ACCORDANCE WITH ITEM 445, "GALVANIZING". FITTINGS SHALL BE SUBSIDIARY TO THE BID ITEM.
- A COMPOSITE MATERIAL BLOCKOUT THAT MEETS THE REQUIREMENTS OF DMS-7210, MAY BE SUBSTITUTED FOR BLOCKOUTS OF SIMILAR DIMENSIONS. SEE CONSTRUCTION DIVISION MATERIAL PRODUCER LIST (MPL) FOR CERTIFIED PRODUCERS.
- IF SOLID ROCK IS ENCOUNTERED SEE THE MANUFACTURER'S INSTALLATION MANUAL AND REFER TO THE LATEST ROADWAY MBGF STANDARD FOR INSTALLATION GUIDANCE.
- POSTS SHALL NOT BE SET IN CONCRETE.
- IT IS ACCEPTABLE TO INSTALL THE SoftStop IMPACT HEAD PARALLEL TO THE GRADE LINE OR WITH AN UPWARD TILT.
- DO NOT ATTACH THE SoftStop SYSTEM DIRECTLY TO A RIGID BARRIER.
- UNDER NO CIRCUMSTANCES SHALL THE GUARDRAIL WITHIN THE SoftStop SYSTEM BE CURVED.
- A FLARE RATE OF UP TO 25:1 MAY BE USED TO PREVENT THE TERMINAL HEAD FROM ENCRoACHING ON THE SHOULDER. THE FLARE MAY BE DECREASED OR ELIMINATED FOR SPECIFIC INSTALLATIONS, IF DIRECTED BY THE ENGINEER.

NOTE:A	THE INSTALLATION HEIGHT OF FULLY ASSEMBLED ANCHOR POST WILL VARY FROM 3-3/4" MIN. TO 4" MAX. ABOVE FINISHED GRADE.
NOTE:B	PART PN:5852B RIGHT-SIDE (HIGH INTENSITY REFLECTIVE SHEETING) PART PN:5851B LEFT-SIDE (HIGH INTENSITY REFLECTIVE SHEETING)
NOTE:C	W-BEAM SPLICE LOCATED BETWEEN LINE POST(4) AND LINE POST(5) GUARDRAIL PANEL 25'-0" PN:61G ANCHOR RAIL 25'-0" PN:15215G LAP GUARDRAIL IN DIRECTION OF TRAFFIC FLOW.

PART	QTY	MAIN SYSTEM COMPONENTS
620237B	1	PRODUCT DESCRIPTION ASSEMBLY MANUAL (LATEST REV.)
15208A	1	SoftStop HEAD (SEE MANUAL FOR RIGHT-LEFT APPROACH)
15215G	1	SoftStop ANCHOR RAIL (12GA) WITH CUTOUT SLOTS
61G	1	SoftStop DOWNSTREAM W-BEAM RAIL (12GA) (25'-0")
15205A	1	POST #0 - ANCHOR POST (6'-5 3/8")
15203G	1	POST #1 - (SYTP) (4'-9 1/2")
15000G	1	POST #2 - (SYTP) (6'-0")
533G	6	POST #3 THRU #8 - I-BEAM (W6 X 8.5) (6'-0")
4076B	7	BLOCKOUT - WOOD (ROUTED) (6" X 8" X 14")
6777B	7	BLOCKOUT - COMPOSITE (4" X 7 1/2" X 14")
15204A	1	ANCHOR PADDLE
15207G	1	ANCHOR KEEPER PLATE (24 GA)
15206G	1	ANCHOR PLATE WASHER (1/2" THICK)
15201G	2	ANCHOR POST ANGLE (10" LONG)
15202G	1	ANGLE STRUT

HARDWARE		
4902G	1	1" ROUND WASHER F436
3908G	1	1" HEAVY HEX NUT A563 GR.DH
3717G	2	3/4" X 2 1/2" HEX BOLT A325
3701G	4	3/4" ROUND WASHER F436
3704G	2	3/4" HEAVY HEX NUT A563 GR.DH
3360G	16	3/8" X 1 1/4" W-BEAM RAIL SPLICE BOLTS HGR
3340G	25	3/8" W-BEAM RAIL SPLICE NUTS HGR
3500G	7	3/8" X 10" HGR POST BOLT A307
3391G	1	3/8" X 1 3/4" HEX HD BOLT A325
4489G	1	3/8" X 9" HEX HD BOLT A325
4372G	4	3/8" WASHER F436
105285G	2	3/16" X 2 1/2" HEX HD BOLT GR-5
105286G	1	3/16" X 1 1/2" HEX HD BOLT GR-5
3240G	6	3/16" ROUND WASHER (WIDE)
3245G	3	3/16" HEX NUT A563 GR.DH
5852B	1	HIGH INTENSITY REFLECTIVE SHEETING - SEE NOTE:B

Texas Department of Transportation  
Design Division Standard

**TRINITY HIGHWAY  
SOFTSTOP END TERMINAL  
MASH - TL-3  
SGT (10S) 31-16**

FILE: sgt10s3116	DN: TxDOT	CK: KM	DW: VP	CK: MB/VP
© TxDOT: JULY 2016	CONT	SECT	JOB	HIGHWAY
REVISIONS	DIST	COUNTY	SHEET NO.	

NOTE: THIS STANDARD IS A BASIC REPRESENTATION OF THE SoftStop END TERMINAL, IT IS NOT INTENDED TO REPLACE THE PRODUCT DESCRIPTION ASSEMBLY MANUAL.