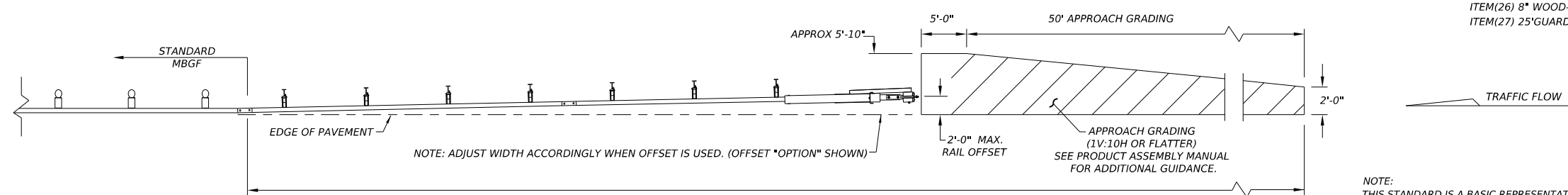
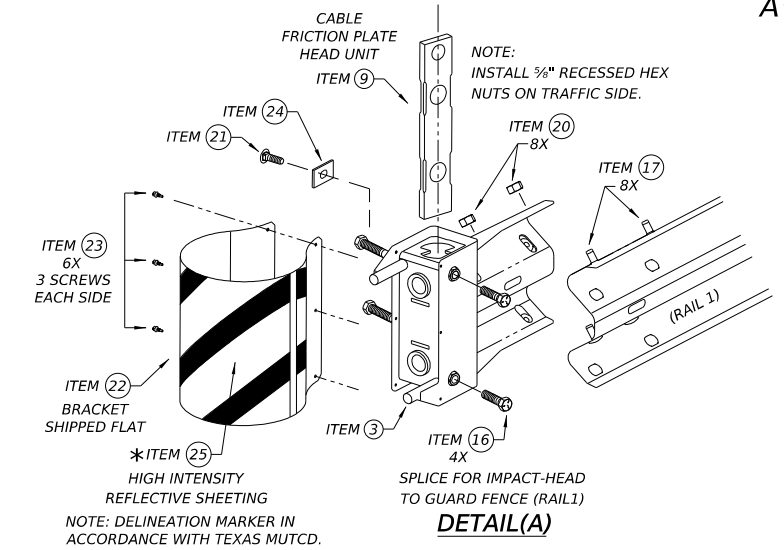
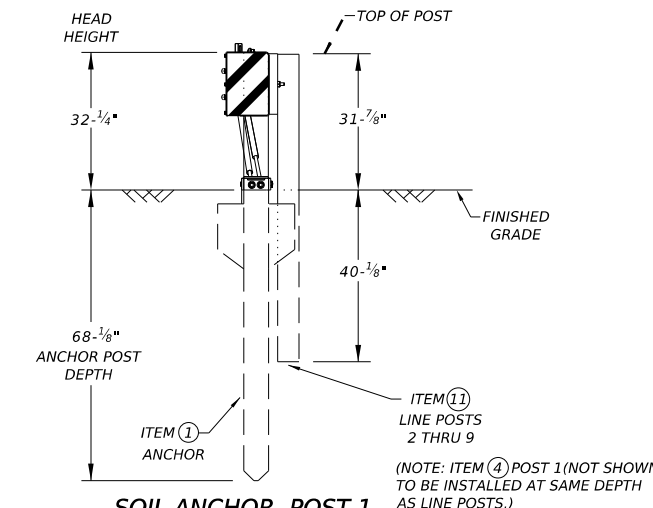
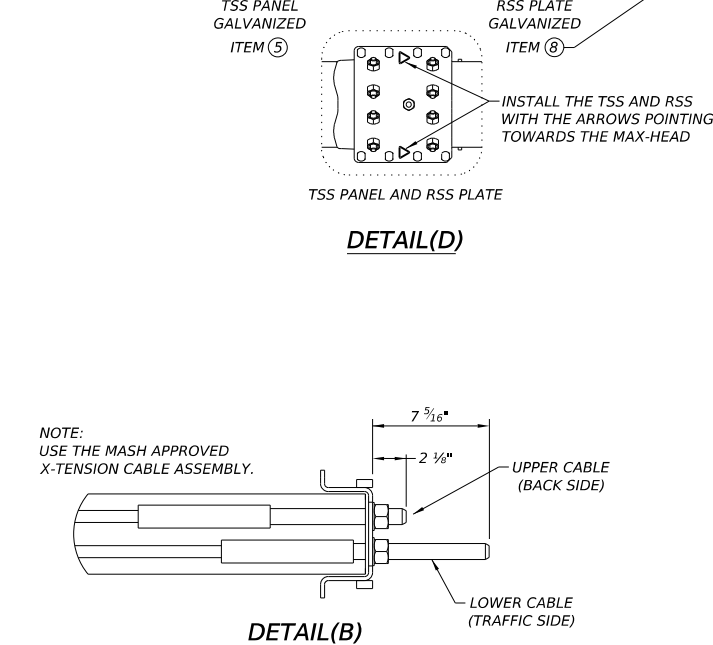
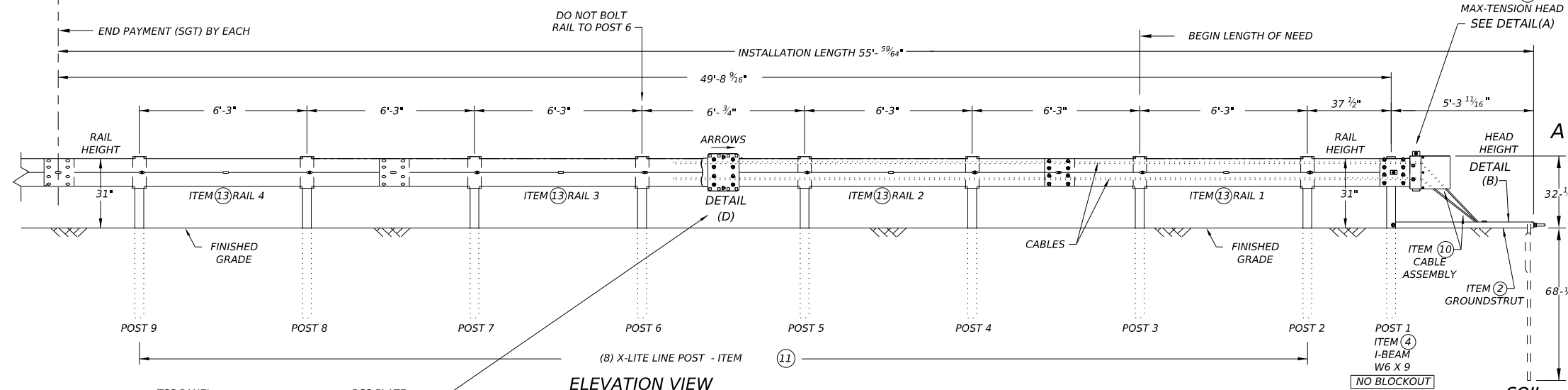
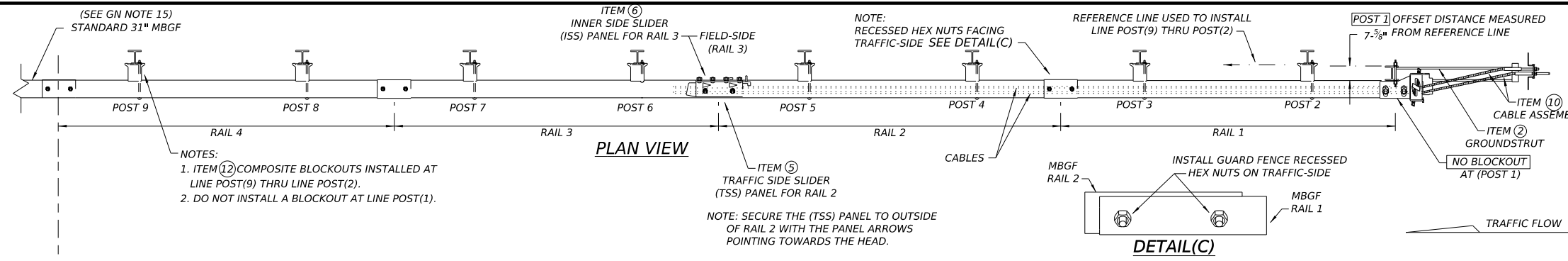


DISCLAIMER: The use of this standard is governed by the "Texas Engineering Practice Act". No warranty of any kind is made by TxDOT for any purpose whatsoever. TxDOT assumes no responsibility for the conversion of this standard to other formats or for incorrect results or damages resulting from its use.



NOTE: TxDOT GENERIC APPROACH GRADING LAYOUT USED FOR ALL TANGENT TYPE END TREATMENTS.

APPROACH GRADING AT GUARDRAIL END TREATMENTS

NOTE: THIS STANDARD IS A BASIC REPRESENTATION OF THE MAX-TENSION END TERMINAL. IT IS NOT INTENDED TO REPLACE THE PRODUCT DESCRIPTION ASSEMBLY MANUAL.

- GENERAL NOTES**
- FOR SPECIFIC INFORMATION REGARDING INSTALLATION AND TECHNICAL GUIDANCE OF THE SYSTEM, CONTACT: LINDSAY TRANSPORTATION SOLUTIONS (LTS) - BARRIER SYSTEMS, INC. AT (707) 374-6800
 - FOR INSTALLATION, REPAIR, & MAINTENANCE REFER TO THE; MAX-TENSION INSTALLATION INSTRUCTION MANUAL. P/N MANMAX REV D (ECN 3516).
 - APPLY HIGH INTENSITY REFLECTIVE SHEETING. "OBJECT MARKER" ON THE FRONT FACE OF THE DEVICE PER MANUFACTURER'S RECOMMENDATIONS. OBJECT MARKER SHALL CONFORM TO THE STANDARDS REQUIRED IN TEXAS MUTCD.
 - FOR POST (LEAVE-OUT) INSTALLATION AND GUIDANCE SEE TxDOT'S LATEST ROADWAY MOW STRIP STANDARD.
 - ALL STEEL COMPONENTS ARE GALVANIZED PER ASTM A123 OR EQUIVALENT UNLESS OTHERWISE STATED.
 - SYSTEM SHOWN USING STEEL WIDE FLANGE POST WITH COMPOSITE BLOCKOUTS.
 - COMPOSITE MATERIAL BLOCKOUT THAT MEETS THE REQUIREMENTS OF DMS-7210, MAY BE SUBSTITUTED FOR BLOCKOUTS SIMILAR DIMENSIONS. SEE CONSTRUCTION DIVISION MATERIAL PRODUCER LIST(MPL)FOR CERTIFIED PRODUCERS.
 - REFER TO INSTALLATION MANUAL FOR SPECIFIC PANEL LAPPING GUIDANCE.
 - IF SOLID ROCK IS ENCOUNTERED SEE THE MANUFACTURER'S INSTALLATION MANUAL FOR INSTALLATION GUIDANCE.
 - POSTS SHALL NOT BE SET IN CONCRETE.
 - A DRIVING CAP WITH A TIMBER OR PLASTIC INSERT SHALL BE USED WHEN DRIVING POST TO PREVENT DAMAGE TO THE GALVANIZING ON TOP OF THE POST.
 - MAX-TENSION SYSTEM SHALL NEVER BE INSTALLED WITHIN A CURVED SECTION OF GUARDRAIL.
 - IF A DELINEATION MARKER IS REQUIRED, MARKER SHALL BE IN ACCORDANCE WITH TEXAS MUTCD.
 - THE SYSTEM IS SHOWN WITH 12'-6" MBGF PANELS, 25'-0" MBGF PANELS ARE ALSO ALLOWED.
 - A MINIMUM OF 12'-6" OF 12GA. MBGF IS REQUIRED IMMEDIATELY DOWNSTREAM OF THE MAX-TENSION SYSTEM.

ITEM #	PART NUMBER	DESCRIPTION	QTY
1	BSI-1610060-00	SOIL ANCHOR - GALVANIZED	1
2	BSI-1610061-00	GROUND STRUT - GALVANIZED	1
3	BSI-1610062-00	MAX-TENSION IMPACT HEAD	1
4	BSI-1610063-00	W6x9 I-BEAM POST 6FT.-GALVANIZED	1
5	BSI-1610064-00	TSS PANEL - TRAFFIC SIDE SLIDER	1
6	BSI-1610065-00	ISS PANEL - INNER SIDE SLIDER	1
7	BSI-1610066-00	TOOTH - GEOMET	1
8	BSI-1610067-00	RSS PLATE - REAR SIDE SLIDER	1
9	B061058	CABLE FRICTION PLATE - HEAD UNIT	1
10	BSI-1610069-00	CABLE ASSEMBLY - MASH X-TENSION	2
11	BSI-1012078-00	X-LITE LINE POST-GALVANIZED	8
12	B090534	8" W-BEAM COMPOSITE-BLOCKOUT XT110	8
13	BSI-4004386	12'-6" W-BEAM GUARD FENCE PANELS 12GA.	4
14	BSI-1102027-00	X-LITE SQUARE WASHER	1
15	BSI-2001886	3/8" X 7" THREAD BOLT HH (GR.5)GEOMET	1
16	BSI-2001885	3/4" X 3" ALL-THREAD BOLT HH (GR.5)GEOMET	4
17	4001115	3/8" X 1 1/2" GUARD FENCE BOLTS (GR.2)MGAL	48
18	2001840	3/8" X 10" GUARD FENCE BOLTS MGAL	8
19	2001636	3/8" WASHER F436 STRUCTURAL MGAL	2
20	4001116	3/8" RECESSED GUARD FENCE NUT (GR.5)MGAL	59
21	BSI-2001888	3/8" X 2" ALL THREAD BOLT (GR.5)GEOMET	1
22	BSI-1701063-00	DELINEATION MOUNTING (BRACKET)	1
23	BSI-2001887	1/4" X 3/4" SCREW SD HH 410SS	7
24	4002051	GUARDRAIL WASHER RECT AASHTO FWR03	1
25	SEE NOTE BELOW	HIGH INTENSITY REFLECTIVE SHEETING	1
26	4002337	8" W-BEAM TIMBER-BLOCKOUT, PDB01B	8
27	BSI-4004431	25' W-BEAM GUARDRAIL PANEL, 8-SPACE, 12GA.	2
28	MANMAX Rev-(D)	MAX-TENSION INSTALLATION INSTRUCTIONS	1

* TO BE PROVIDED BY DISTRIBUTOR OR CONTRACTOR.

** ALTERNATIVE ITEMS NOT SHOWN. ITEM(26) 8" WOOD-BLOCKOUTS ITEM(27) 25' GUARD FENCE PANELS

Texas Department of Transportation

Design Division Standard

MAX-TENSION END TERMINAL

MASH - TL-3

SGT (11S) 31-18

FILE: sg+11s3118.dgn DN: TxDOT CK: KM DW: TxDOT CK: CL

© TxDOT: FEBRUARY 2018 CONT SECT JOB HIGHWAY

REVISIONS

DIST COUNTY SHEET NO.

DATE: FILE: