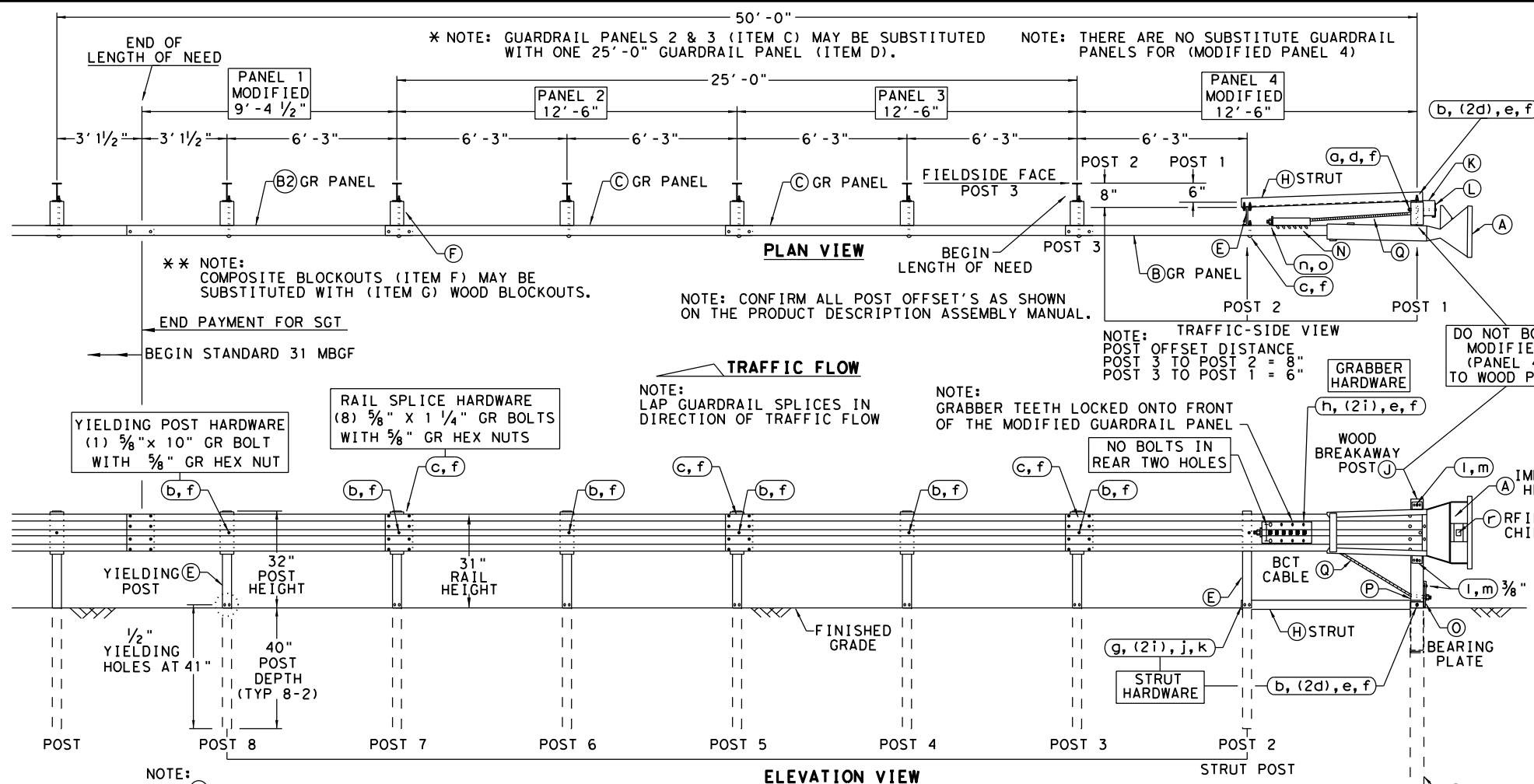


DISCLAIMER: THE USE OF THIS STANDARD IS GOVERNED BY THE "TEXAS ENGINEERING PRACTICE ACT". NO WARRANTY OF ANY KIND IS MADE BY TXDOT FOR ANY PURPOSE WHATSOEVER. TXDOT ASSUMES NO RESPONSIBILITY FOR THE CONVERSION OF THIS STANDARD TO OTHER FORMATS OR FOR INCORRECT RESULTS OR DAMAGES RESULTING FROM ITS USE.

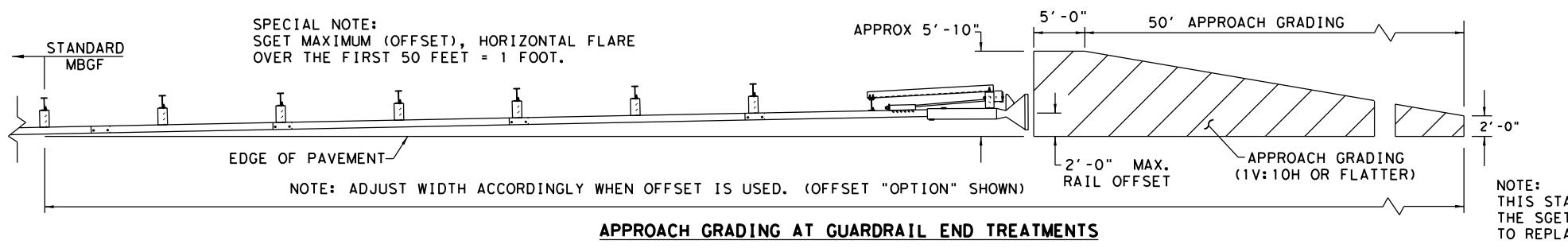
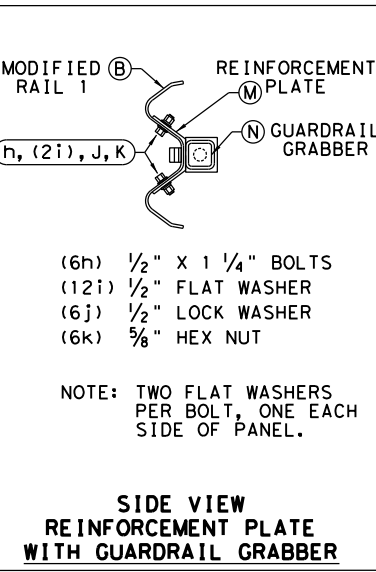
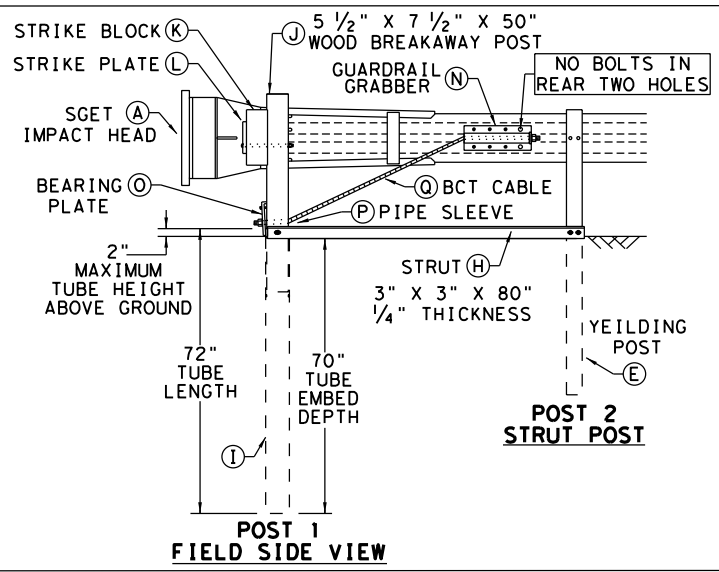
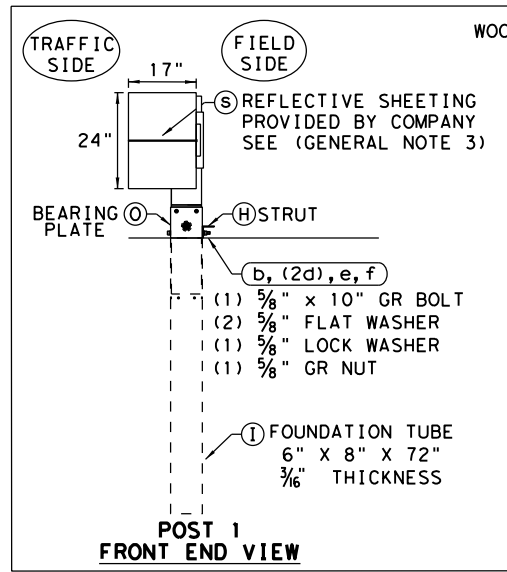
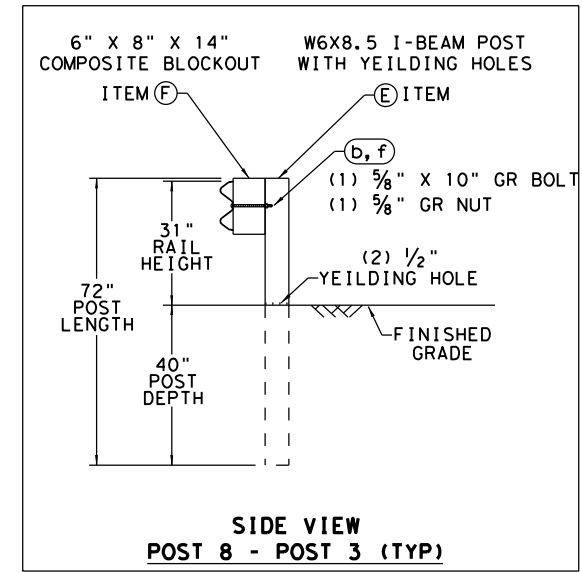


- ### GENERAL NOTES
- FOR SPECIFIC INFORMATION REGARDING INSTALLATION AND TECHNICAL GUIDANCE OF THE SYSTEM, CONTACT: SPIG INDUSTRY, INC. AT 1(267) 644-9510. 14675 INDUSTRIAL PARK RD; BRISTOL, VA 24202
  - FOR INSTALLATION, REPAIR AND MAINTENANCE REFER TO THE MANUFACTURER'S; SGET END TERMINAL, PRODUCT DESCRIPTION ASSEMBLY MANUAL.
  - MANUFACTURER WILL APPLY HIGH INTENSITY REFLECTIVE SHEETING, "OBJECT MARKER" TO THE FACE PLATE OF THE DEVICE PER MANUFACTURER'S RECOMMENDATIONS. THE OBJECT MARKER SHALL CONFORM TO THE STANDARDS REQUIRED IN TEXAS MUTCD.
  - THE NOMINAL HEIGHT OF THE GUARDRAIL BEAM IS 31 INCHES WITH A TOLERANCE OF +/- ONE INCH.
  - FOR POST (LEAVE-OUT) INSTALLATION AND GUIDANCE SEE TXDOT'S LATEST ROADWAY MOW STRIP STANDARD.
  - (POST 2 THROUGH POST 8) ARE MODIFIED STEEL-YIELDING POSTS WITH YIELDING HOLES AT GROUND LEVEL. THERE ARE NO SUBSTITUTE POSTS.
  - POSTS SHALL NOT BE SET IN CONCRETE.
  - IF SOLID ROCK IS ENCOUNTERED FOR ANY OF THE POSTS IN THE SYSTEM, CONTACT THE MANUFACTURER FOR SPECIFIC INSTALLATION GUIDANCE.
  - HARDWARE (BOLTS, NUTS, & WASHERS) SHALL BE GALVANIZED IN ACCORDANCE WITH ITEM 445, "GALVANIZING". FITTINGS SHALL BE SUBSIDIARY TO THE BID ITEM.
  - A COMPOSITE MATERIAL BLOCKOUT THAT MEETS DMS-7210 REQUIREMENTS MAY BE SUBSTITUTED FOR AN APPROVED WOOD BLOCKOUT. SEE CONSTRUCTION DIVISION MATERIAL PRODUCER LIST (MPL) FOR CERTIFIED PRODUCERS.
  - THE ENTIRE SYSTEM MUST BE INSTALLED IN A STRAIGHT LINE WITHOUT ANY CURVE. HOWEVER, THE SYSTEM CAN BE OFFSET BY TWO FEET AS SHOWN ON THE APPROACH GRADING DETAIL TO HELP OFF-SET THE IMPACT HEAD FROM SHOULDER OF THE ROAD.

ITEM	QTY	MAIN SYSTEM COMPONENTS	ITEM #
A	1	SGET IMPACT HEAD	SIH1A
B	1	MODIFIED GUARDRAIL PANEL 12'-6" 12GA	126SPZGP
B2	1	MODIFIED GUARDRAIL PANEL 9'-4 1/2" 12GA	GP94
C	2	STANDARD GUARDRAIL PANEL 12'-6" 12GA	GP126
D	1	STANDARD GUARDRAIL PANEL 25'-0" 12GA	GP25
E	7	MODIFIED YIELDING I-BEAM POST W6x8.5	YP6MOD
F	6	COMPOSITE BLOCKOUT 6" X 8" X 14"	CBO8
G	6	WOOD BLOCKOUT 6" X 8" X 14"	WBO8
H	1	STRUT 3" X 3" X 80" X 1/4" A36 ANGLE	STR80
I	1	FOUNDATION TUBE 6" X 8" X 72" X 3/8"	FNDT6
J	1	WOOD BREAKAWAY POST 5 1/2" X 7 1/2" X 50"	WBRK50
K	1	WOOD STRIKE BLOCK	WSBK14
L	1	STRIKE PLATE 1/4" A36 BENT PLATE	SPLT8
M	1	REINFORCEMENT PLATE 12 GA. GR55	REPLT17
N	1	GUARDRAIL GRABBER 2 1/2" X 2 1/2" X 16 1/2"	GGR17
O	1	BEARING PLATE 8" X 8 5/8" X 5/8" A36	BPLT8
P	1	PIPE SLEEVE 4 1/4" X 2 3/8" O.D. (2 1/8" I.D.)	PSLV4
Q	1	BCT CABLE 3/4" X 81" LENGTH	CBL81

ITEM	QTY	SMALL HARDWARE	ITEM #
o	1	5/8" X 12" GUARDRAIL BOLT 307A HDG	12GRBLT
b	7	5/8" X 10" GUARDRAIL BOLT 307A HDG	10GRBLT
c	33	5/8" X 1 1/4" GR SPlice BOLTS 307A HDG	1GRBLT
d	3	5/8" FLAT WASHER F436 A325 HDG	58FW436
e	1	5/8" LOCK WASHER HDG	58LW
f	39	5/8" GUARDRAIL HEX NUT HDG	58HN563
g	2	1/2" X 2" STRUT BOLT A325 HDG	2BLT
h	6	1/2" X 1 1/4" PLATE BOLT A325 HDG	125BLT
i	16	1/2" FLAT WASHER F436 A325 HDG	12FWF436
j	8	1/2" LOCK WASHER HDG	12LW
k	8	1/2" HEX NUT A563 HDG	12HN563
l	4	3/8" X 3" HEX LAG SCREW GR5 HDG	38LS
m	4	3/8" FLAT WASHER F436 A325 HDG	38FW844
n	2	1" FLAT WASHER F436 A325 HDG	1FWF436
o	2	1" HEX NUT A563DH HDG	1HN563
p	1	18" TO 24" LONG ZIP TIE RATED 175-200LB	ZPT18
q	1	1 1/2" X 4" SCH-40 PVC PIPE	PSPCR4
r	1	RFID CHIP RATED MIL-STD-810F	RFID810F
s	1	IMPACT HEAD REFLECTIVE SHEETING	RS30M



NOTE: THIS STANDARD IS A BASIC REPRESENTATION OF THE SGET TERMINAL SYSTEM AND IS NOT INTENDED TO REPLACE THE MANUFACTURER'S ASSEMBLY MANUAL.

**SPIG INDUSTRY, LLC**  
**SINGLE GUARDRAIL TERMINAL**  
**SGET - TL-3 - MASH**  
**SGT (15) 31-20**

FILE: sg+153120.dgn	DN: TXDOT	CK: KM	DW: VP	CK: VP
© TXDOT: APRIL 2020	CONT	SECT	JOB	HIGHWAY
REVISIONS				
DIST	COUNTY	SHEET NO.		

Texas Department of Transportation  
Design Division Standard

DATE:  
FILE: