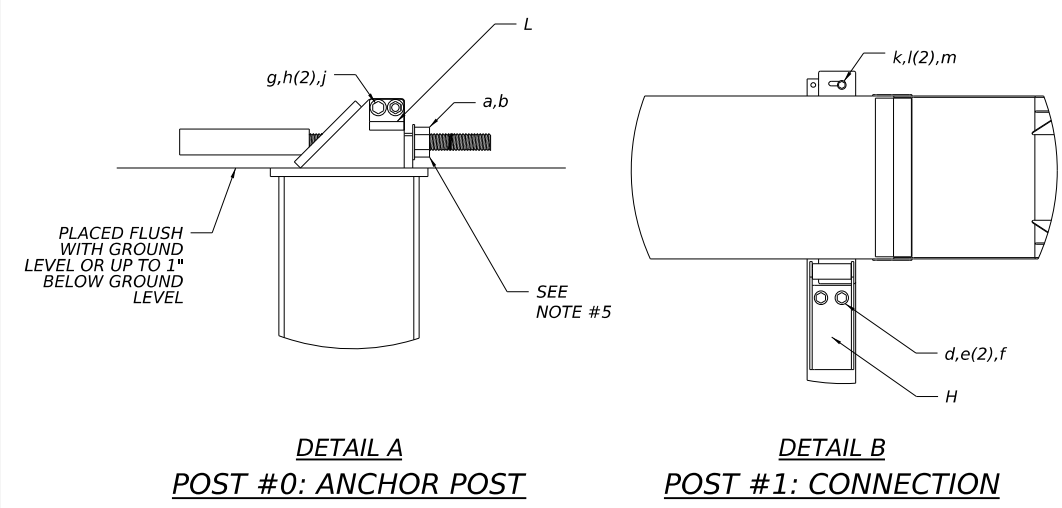
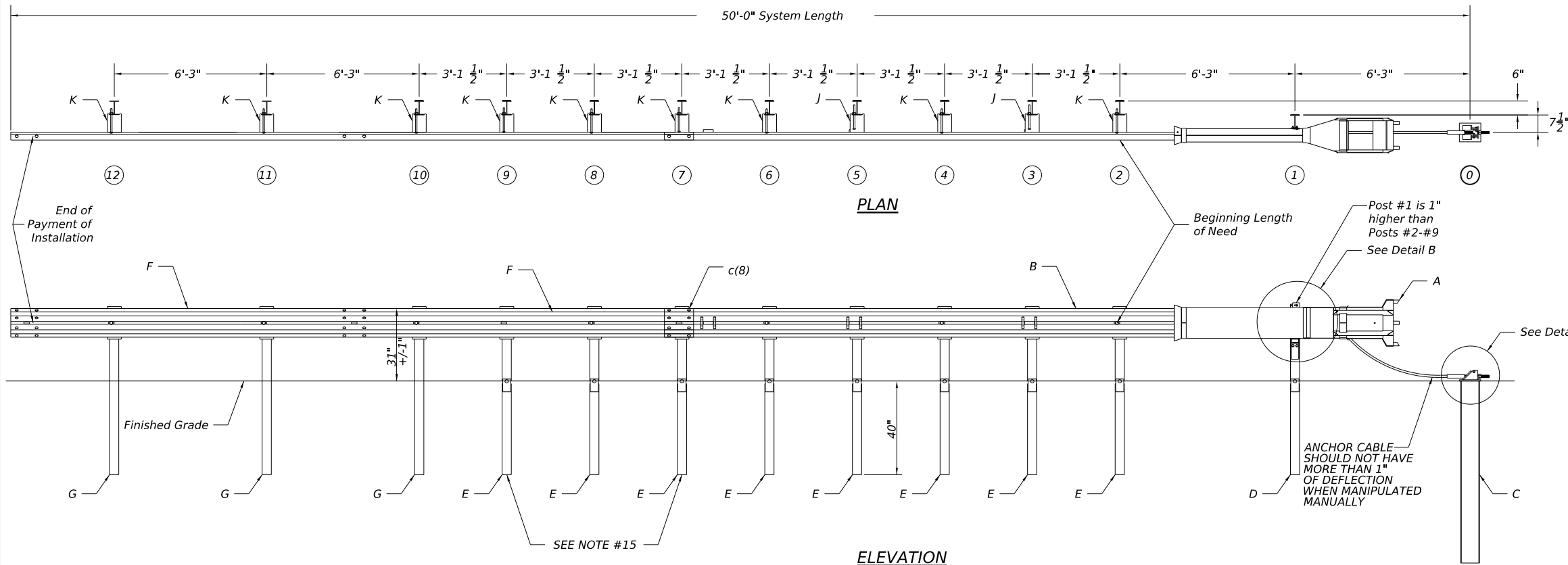
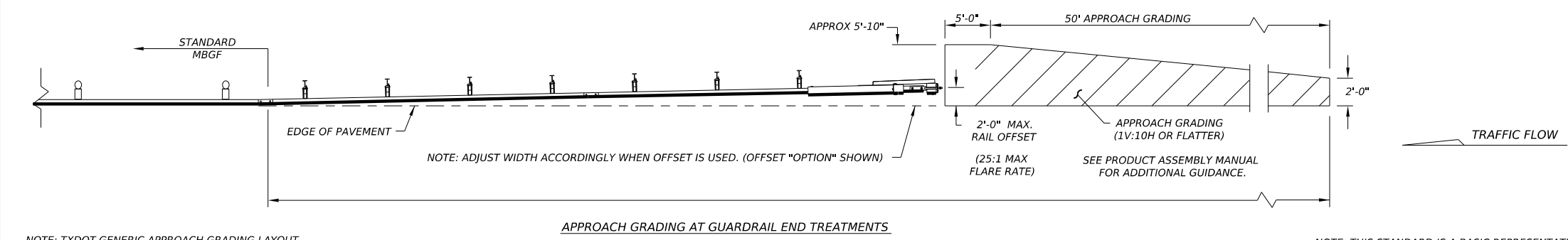


GENERAL NOTES

- FOR SPECIFIC INFORMATION REGARDING INSTALLATION AND TECHNICAL GUIDANCE OF THE SYSTEM, CONTACT: NextGen Safety, LLC. (662)516-1900. <https://www.nextgensafety.net>. The NGT is a non-gating end terminal meaning that it is designed to redirect or control a vehicle upon impact for the full length of the system.
- FOR INSTALLATION, REPAIR AND MAINTENANCE REFER TO THE; NEXT GENERATION TERMINAL INSTALLATION MANUAL.
- APPLY HIGH INTENSITY REFLECTIVE SHEETING, "OBJECT MARKER" ON THE FRONT FACE OF THE DEVICE PER MANUFACTURER'S RECOMMENDATIONS. OBJECT MARKER SHALL CONFORM TO THE STANDARDS REQUIRED IN TEXAS MUTCD.
- FOR POST (LEAVE-OUT) INSTALLATION AND GUIDANCE SEE TXDOT'S LATEST ROADWAY MOW STRIP STANDARD.
- HARDWARE (BOLTS, NUTS, & WASHERS) SHALL BE GALVANIZED IN ACCORDANCE WITH ITEM 445, "GALVANIZING". FITTINGS SHALL BE SUBSIDIARY TO THE BID ITEM.
- PROPRIETARY NGT NOTCHED BLOCKOUTS TO BE USED AT POSTS #3 AND #5 SO THAT THE NOTCH FACES TRAFFIC. NO RAIL IS ATTACHED TO THESE POSTS. CABLE BUTTONS AT POSTS #3 AND #5 WILL NEST WITHIN THE CUTOUT OF THE NOTCH. STANDARD WOOD BLOCKOUTS TO BE USED AT ALL OTHER POSTS.
- COMPOSITE MATERIAL BLOCKOUTS THAT MEETS THE REQUIREMENTS OF DMS-7210, MAY BE SUBSTITUTED FOR STANDARD WOOD BLOCKOUTS OF SIMILAR DIMENSIONS. SEE CONSTRUCTION DIVISION MATERIAL PRODUCER LIST (MPL) FOR CERTIFIED PRODUCERS.
- IF SOLID ROCK IS ENCOUNTERED IN THE AREA OF THE POSTS, CONTACT THE MANUFACTURER, & REFER TO THE LATEST ROADWAY MBGF STANDARD FOR INSTALLATION GUIDANCE.
- POSTS SHALL NOT BE SET IN CONCRETE.
- SYSTEM MUST BE ATTACHED TO STANDARD 31" MBGF.
- UNDER NO CIRCUMSTANCES SHALL THE GUARDRAIL WITHIN THE NGT SYSTEM BE CURVED.
- A FLARE RATE OF UP TO 25:1 MAY BE USED TO PREVENT THE TERMINAL HEAD FROM ENCRoACHING ON THE SHOULDER. THE FLARE MAY BE DECREASED OR ELIMINATED FOR SPECIFIC INSTALLATIONS, IF DIRECTED BY THE ENGINEER.
- THE BASE PLATE OF THE ANCHOR POST (POST#0) IS FLUSH WITH THE GROUND.
- POSTS #2 THROUGH #9 ARE INSTALLED WITH SLOTS FACING AWAY FROM TERMINAL HEAD.
- POST BOLTS DO NOT PASS THROUGH THE GUARDRAIL AT POSTS #7 AND #9.
- ANCHOR NUT IS TORQUED TO 120 LB-FT.
- SPACING TO ALLOW POST BOLT BE INSTALLED IN DOWNSTREAM POST HOLE IN POST #10.



BILL OF MATERIALS			
ITEM	QTY	ITEM	ITEM #
A	1	IMPACT HEAD	1000
B	1	FIRST PANEL W/ CABLE	2000
C	1	ANCHOR POST (W8x15)	3000
D	1	NGT FIRST POST (4 HOLES; 73")	4000
E	8	NGT STD POST (NOTCHED; 72")	4100
F	2	MGS 12.5' RAIL	VARIOUS
G	3	W6X9 POST	PWE01
H	1	SHELF BRACKET	6000
J	2	NOTCHED BLOCKOUT	5000
K	9	8" WOOD BLOCK OR EQUIV.	VARIOUS
L	1	ANCHOR CAP	3100
HARDWARE			
a	1	1" HEX NUT	N2001
b	1	1" WASHER	W2002
c	16	GUARDRAIL BOLT & NUT	FBB01
d	2	1/2"X1-1/2" HEX BOLT GR5	B6001
e	4	1/2" WASHER	W6002
f	2	1/2" HEX NUT	N6003
g	2	7/16"X2" HEX BOLT GR5	B3001
h	4	7/16" WASHER	W3002
j	2	7/16" NUT	N3003
k	1	5/16"X1" HEX BOLT GR5	B1001
l	2	5/16" WASHER	W1002
m	1	5/16" HEX NUT	N1003



NOTE: TXDOT GENERIC APPROACH GRADING LAYOUT USED FOR ALL TANGENT TYPE END TREATMENTS.

NOTE: THIS STANDARD IS A BASIC REPRESENTATION OF THE NGT END TERMINAL, IT IS NOT INTENDED TO REPLACE THE PRODUCT DESCRIPTION ASSEMBLY MANUAL.

DISCLAIMER: The use of this standard is governed by the "Texas Engineering Practice Act". No warranty of any kind is made by TXDOT for any purpose whatsoever. TXDOT assumes no responsibility for the conversion of this standard to other formats or for incorrect results or damages resulting from its use.

Design Division Standard

## NEXT GENERATION TERMINAL MASH TL-3

### SGT (16) 31-25

FILE: sgt163125.dgn	DN: TXDOT	CK: KM	DW: CES	CR: KM
© TXDOT: November 2025	CONT	SECT	JOB	HIGHWAY
REVISIONS		DIST	COUNTY	SHEET NO.