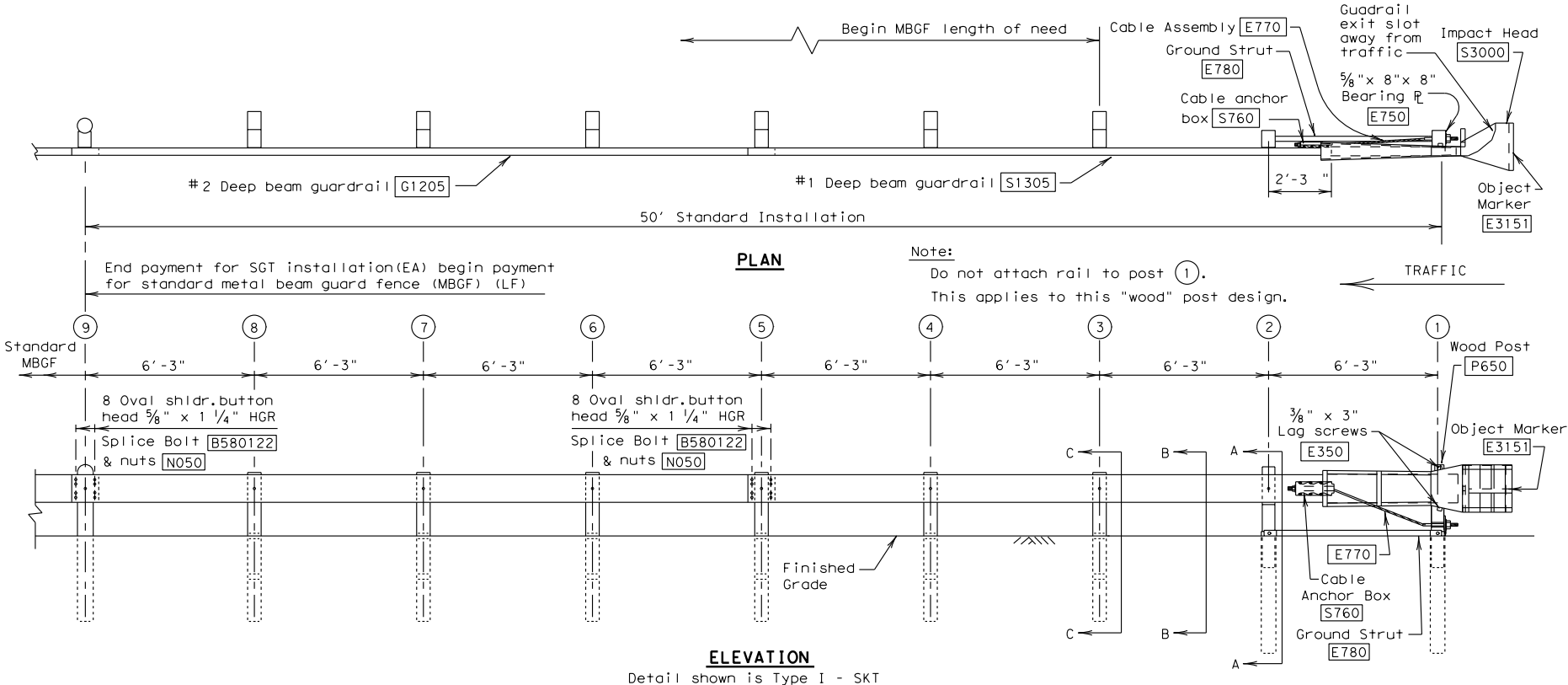


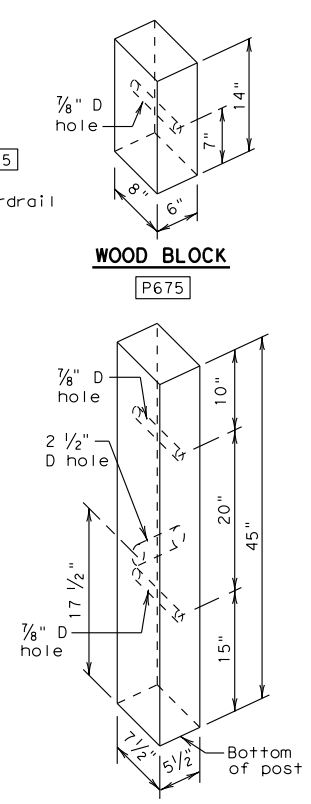
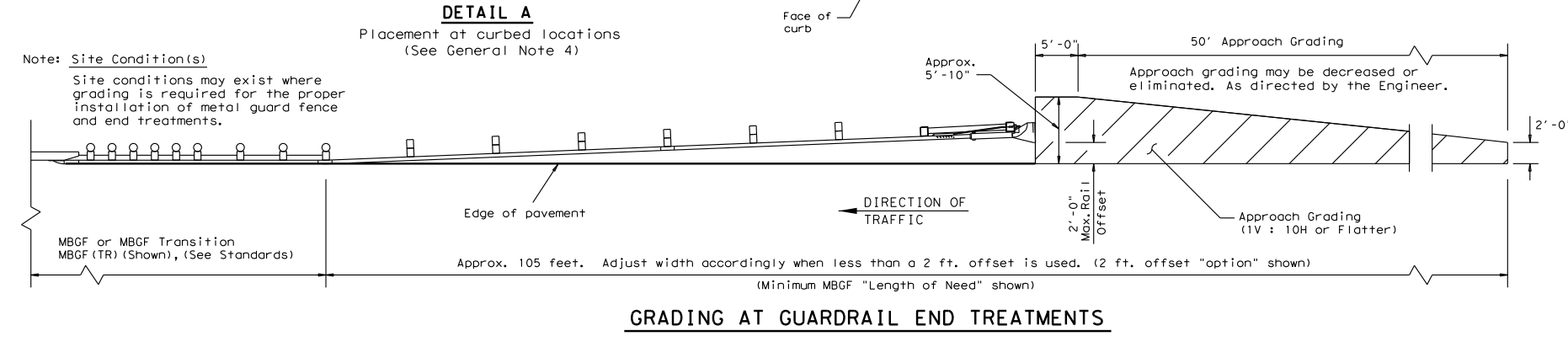
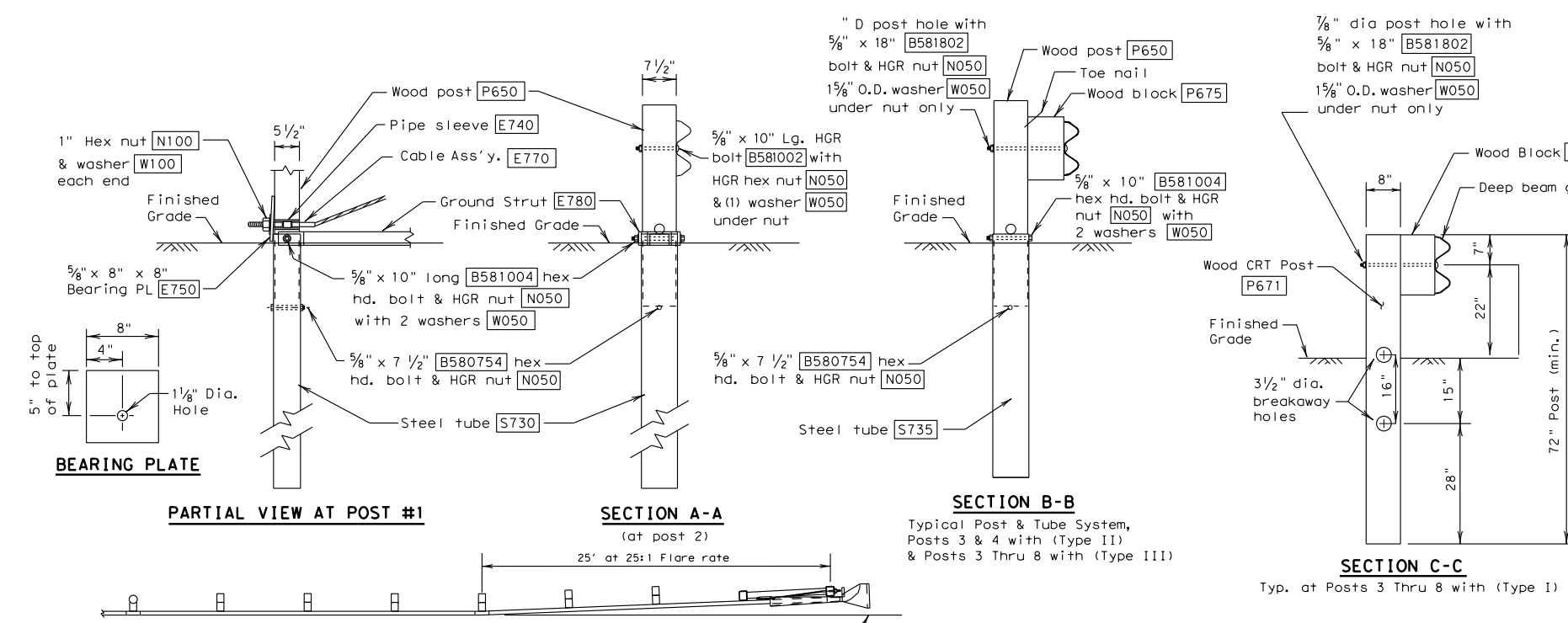
DISCLAIMER: The use of this standard is governed by the "Texas Engineering Practice Act". No warranty of any kind is made by TxDOT for any purpose whatsoever. TxDOT assumes no responsibility for the conversion of this standard to other formats or for incorrect results or damages resulting from its use.

DATE: FILE:



- GENERAL NOTES**
- The Type of SGT unit will be specified elsewhere in the plans. Numbers in circles indicate post position. The Type of SGT unit chosen is a maintenance consideration and does not affect the systems performance.
 

Post & Tube Options		Post Only	
Type I Posts	① thru ②	Posts ③ thru ⑧	
Type II Posts	① thru ④	Posts ⑤ thru ⑧	
Type III Posts	① thru ⑧	None	
  - SGT's placed within the "minimum" 150 ft. radius, shall be installed straight. Standard rail elements may be installed within the radius, without special fabrication.
  - All bolts, nuts cable assemblies, cable anchors, steel tubes & bearing plates shall be galvanized.
  - At non-curbed locations, a flare rate of 25:1 may be used over the first 50 ft. of the system to prevent the terminal head from encroaching on the shoulder. The flare may be decreased or eliminated for specific installations, if directed by the Engineer. At curbed locations, a flare rate of 25:1 shall be used beginning at post number 5 and ending at post number 1.
  - The steel tubes shall not protrude more than 4 inches above ground. Site grading may be necessary to meet this requirement.
  - The steel tubes may be driven with an approved driving head. They shall not be driven with the wood post in the tube. If the steel tubes are placed in drilled holes, the backfill material must be satisfactorily compacted to prevent tube settlement.
  - If solid rock is encountered, See the Manufacturer's installation manual for the proper installation guidance.
  - The breakaway cable assembly must be taut. A locking device, (vice grips or channel lock pliers) should be used to prevent the cable from twisting when tightening the nuts.
  - The wood blocks shall be "toe nailed" to the rectangular wood posts to prevent them from turning when the wood shrinks.
  - For curb installations, the soil tubes and posts shall be installed at the proper ground elevation behind the curb. The posts will then require field drilling new holes to accommodate the rail to post connection bolt to maintain the proper height of the rail above the gutter pan. The excess post length above the rail will be removed if directed by the Engineer.
  - An object marker shall be installed on the front of the impact head as detailed on D&M(VIA).
  - A special site evaluation should be considered, prior to using this end treatment where there is less than 25 feet between the outlet side of the end treatment and any adjacent driving lane.



All measurements should be taken from bottom of posts.

**WOOD POST (P650)**

POST & TUBE OPTIONS	
Type I	post ① thru ②
Type II	post ① thru ④
Type III	post ① thru ⑧

Code #	POST & TUBE OPTIONS			BILL OF MATERIAL	
	Type I Qty.	Type II Qty.	Type III Qty.	DESCRIPTION	
S1305	1	1	1	#1 Deep Beam Guardrail (12 Ga.)	
G1205	1	1	1	#2 Deep Beam Guardrail (12 Ga.)	
S730	2	2	2	Steel Tube - 6" x 8" x 72" x 3/16" or 1/8" min	
S735	0	2	6	Steel Tube - 6" x 8" x 54" x 3/16" or 1/8" min	
P650	2	4	8	Wood Posts - 5 1/2" x 7 1/2" x 45"	
P671	6	4	0	Wood CRT Posts - 6" x 8" x 72"	
P675	6	6	6	Wood Block - 6" x 8" x 14"	
E740	1	1	1	Pipe Sleeve - 2" Std. Pipe x 5 1/2"	
E750	1	1	1	Bearing Plate - 5/8" x 8" x 8"	
S760	1	1	1	Cable Anchor Box	
E770	1	1	1	Cable Assembly	
E780	1	1	1	Ground Strut	
S3000	1	1	1	Impact Head	
HARDWARE					
B580754	2	4	8	5/8" x 7 1/2" Hex Hd. Bolt	
B581004	2	4	8	5/8" x 10" Hex Hd. Bolt (Top of Tubes)	
W050	11	15	23	5/8" Washers	
B581002	1	1	1	5/8" x 10" HGR Post Bolt (Post 2)	
B580122	16	16	16	5/8" x 1 1/4" HGR Splice Bolt	
B581802	6	6	6	5/8" x 18" HGR Post Bolt (Posts ③ thru ⑧)	
N050	27	31	39	5/8" HGR Nut (16-Spl, 8-Posts, 2-Strut)	
E350	2	2	2	3/8" x 3" Lag Screw	
N100	2	2	2	1" Hex Nut (Anchor Cable)	
W100	2	2	2	1" Washer (Anchor Cable)	
SB58A	8	8	8	Cable Anchor Box Shoulder Bolts	
N055A	8	8	8	1/2" A325 Structural Nut	
W050A	16	16	16	1/2" A325 Structural Washer	
E3151	1	1	1	Object Marker - (18" x 18")	

**Texas Department of Transportation** Design Division Standard

**SINGLE GUARDRAIL TERMINAL (SKT 350) (WOOD POST) SGT (8) - 11**

FILE: sgt811.dgn	DN: TxDOT	CK: AM	DW: BD	CK: VP
© TxDOT July 2001	CONT	SECT	JOB	HIGHWAY
12-2011	REVISIONS			
DIST	COUNTY	SHEET NO.		