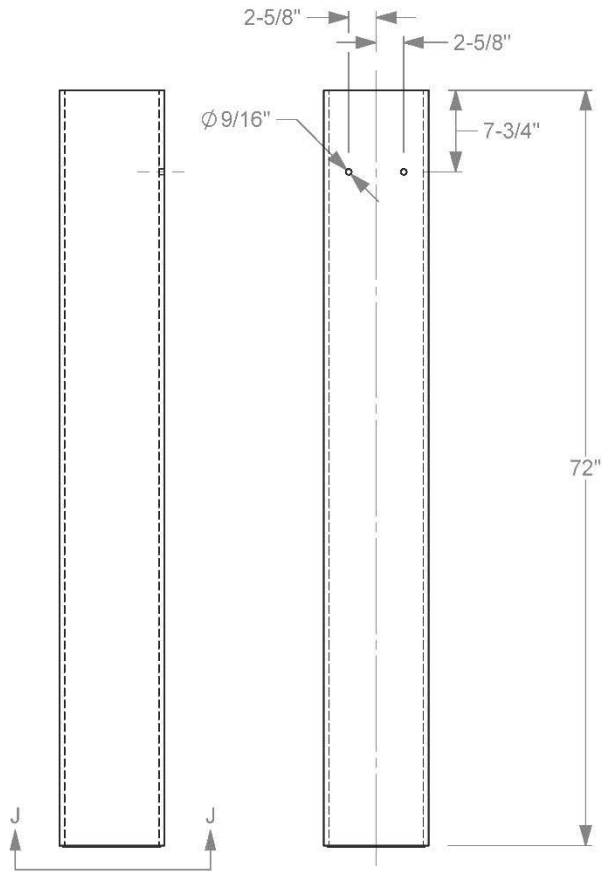


Roadside Safety and
Physical Security Division -
Proving Ground

Project 490026-3-1	Short Radius Guardrail with 3:1 Slope	2016-08-08
Drawn By GES	Scale 1:15	Sheet 15 of 22 Anchor Post

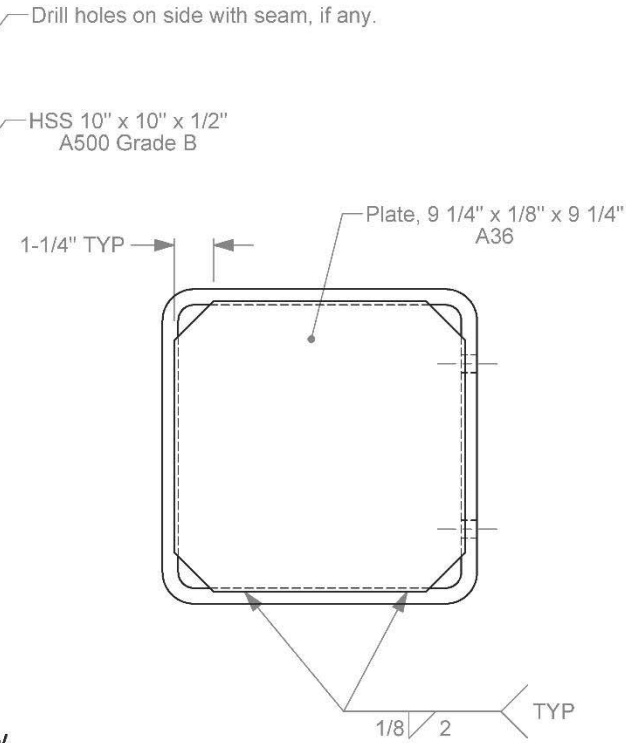
Anchor Post, bottom



Elevation Views



Isometric View



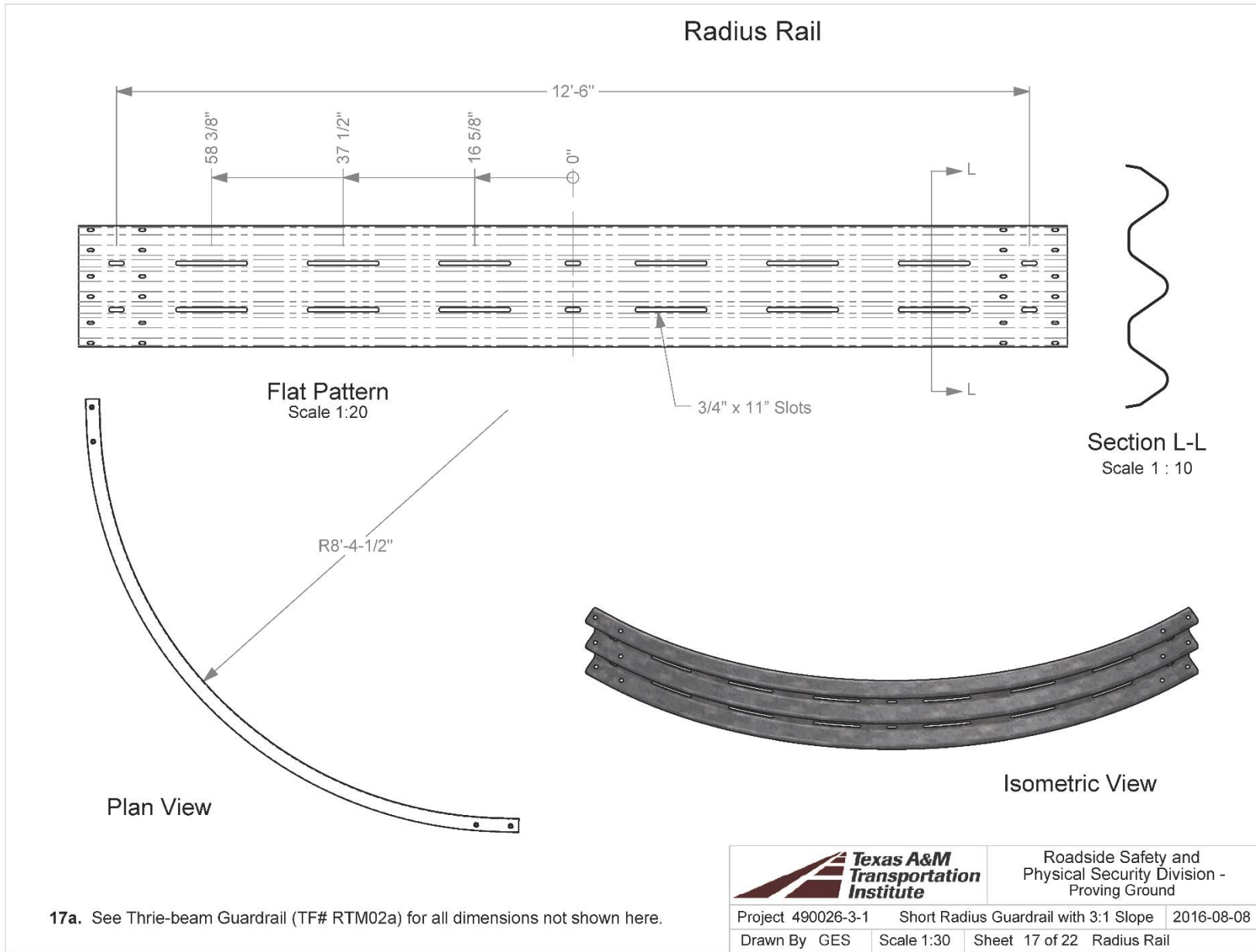
Section J-J

Scale 1 : 5

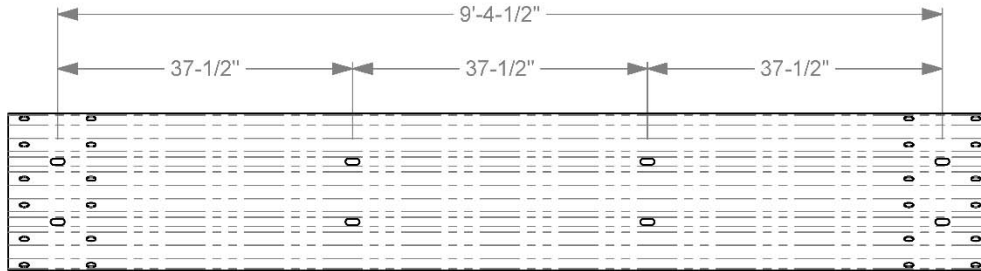


Roadside Safety and
 Physical Security Division -
 Proving Ground

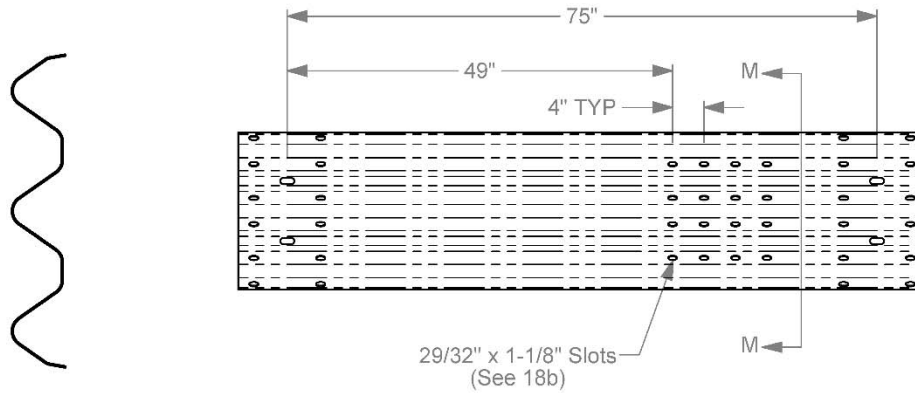
Project 490026-3-1	Short Radius Guardrail with 3:1 Slope	2016-08-08
Drawn By GES	Scale 1:15	Sheet 16 of 22 Anchor Sleeve



9'-4-1/2" Thrie-beam, 37-1/2" spacing



75" Thrie-beam Anchor Rail



Section M-M
Scale 1 : 10

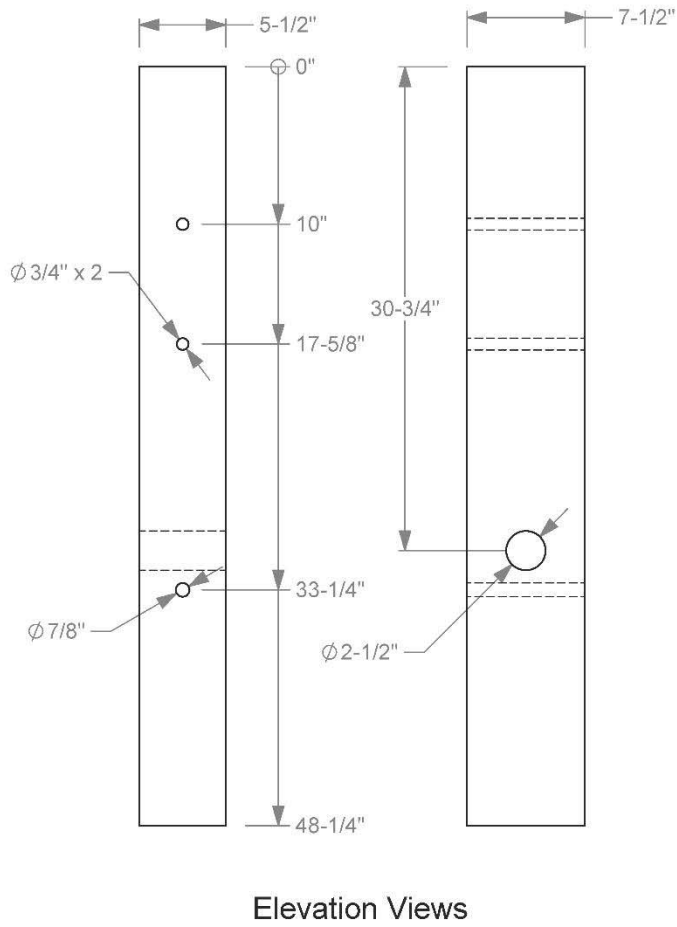
18a. See Thrie-beam Guardrail (TF 13 # RTM02a) for all dimensions not shown here.
18b. Anchor Bracket slots in line with, and same size as, Splice Bolt slots. See BCT Terminal Rail Section (TF 13 # RWM14a).



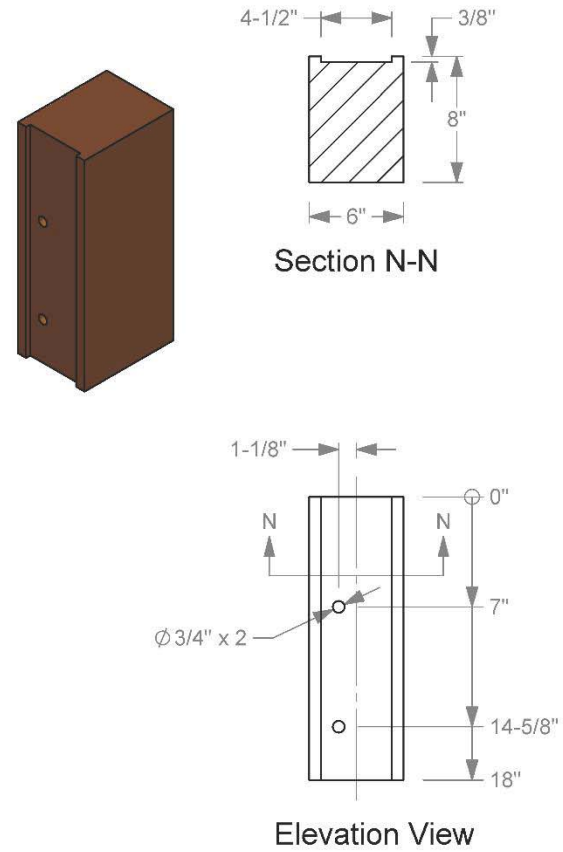
Roadside Safety and
Physical Security Division -
Proving Ground

Project 490026-3-1	Short Radius Guardrail with 3:1 Slope	2016-08-08
Drawn By GES	Scale 1:20	Sheet 18 of 22 Thrie-beam Rails

Modified BCT Timber Post

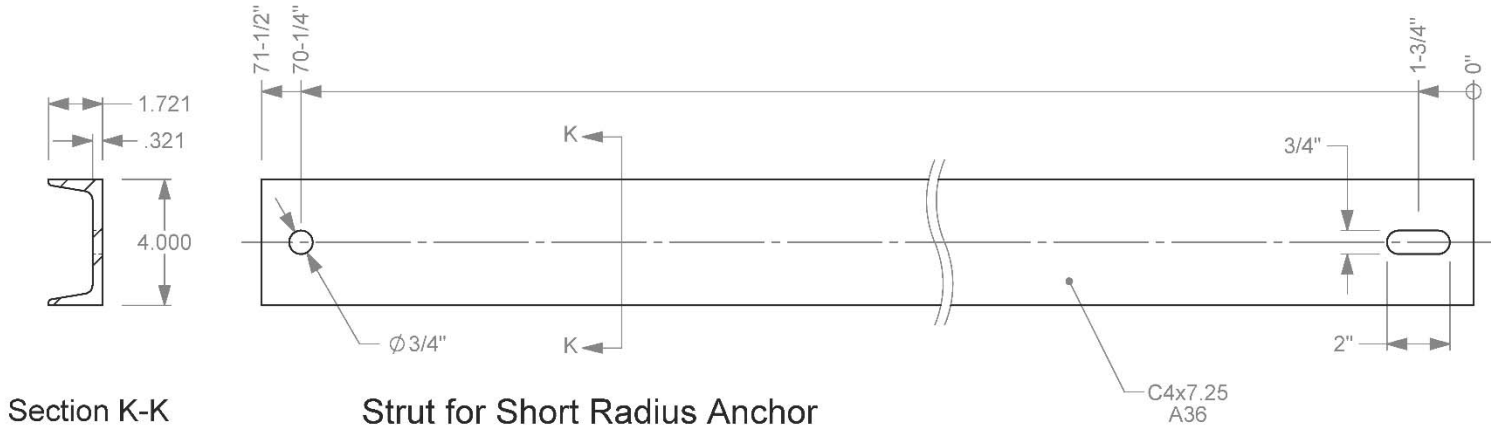


18" Routed Blockout for Thrie-beam



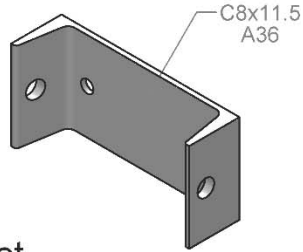
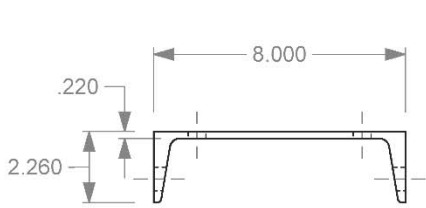
Roadside Safety and
Physical Security Division -
Proving Ground

Project 490026-3-1	Short Radius Guardrail with 3:1 Slope	2016-08-08
Drawn By GES	Scale 1:10	Sheet 19 of 22 Parts-1

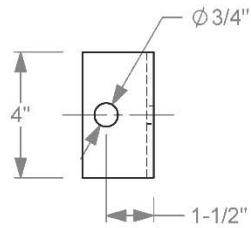
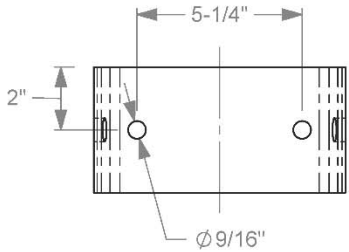


Section K-K

Strut for Short Radius Anchor

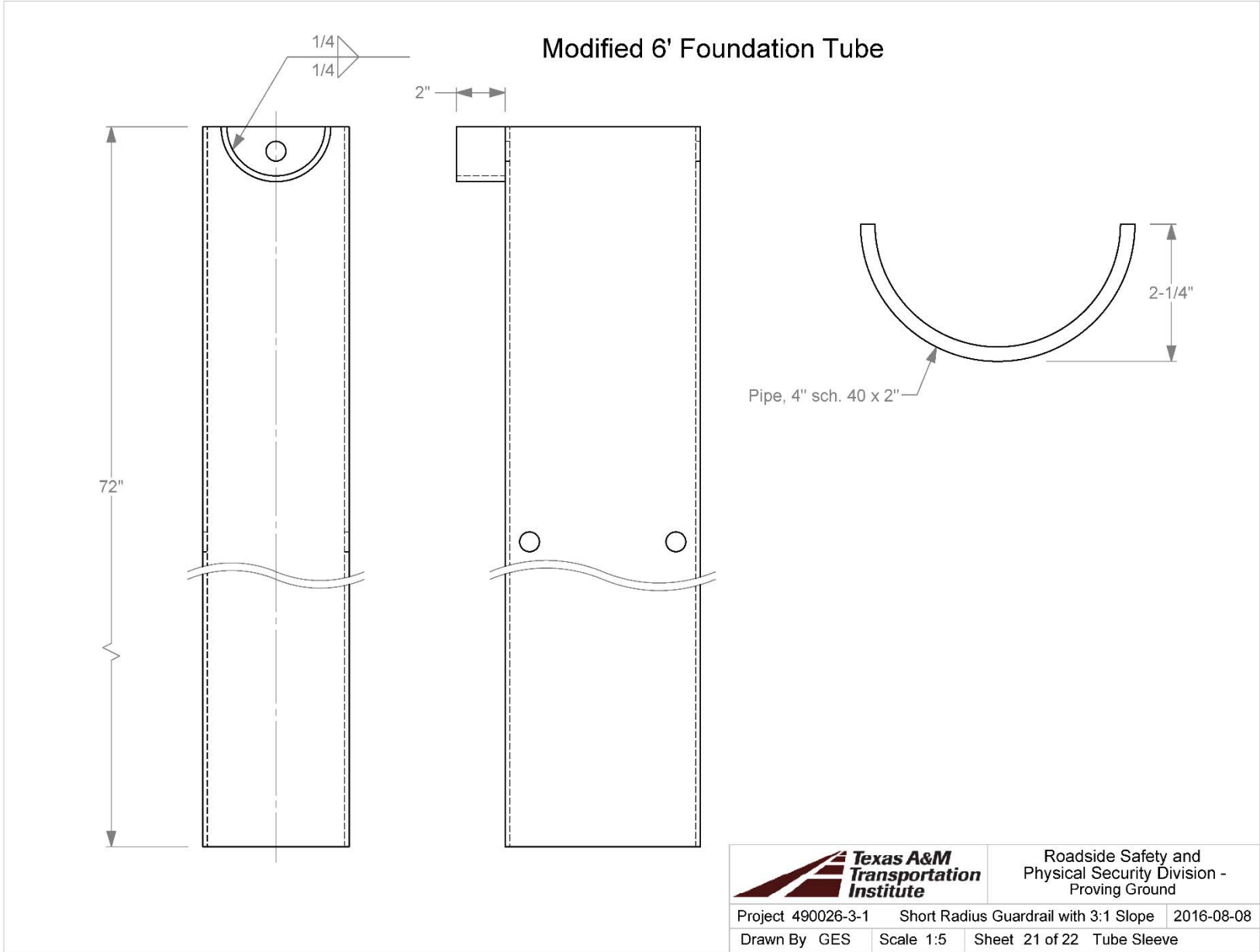


Strut Bracket

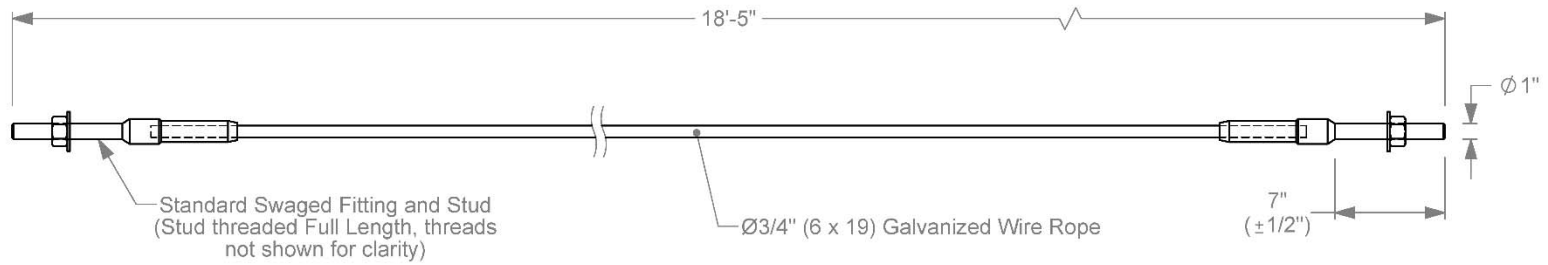


Roadside Safety and
Physical Security Division -
Proving Ground


Project 490026-3-1	Short Radius Guardrail with 3:1 Slope	2016-08-08
Drawn By GES	Scale 1:5	Sheet 20 of 22 Parts-2



Anchor Cable for Short Radius Rail



- 22a.** The Stud shall conform to the requirements of ASTM A449 and shall be galvanized in accordance with ASTM A153. The threads shall have a Class 2A fit before galvanizing.
- 22b.** The Wire Rope shall conform to the requirements of AASHTO M-30 and shall be Ø3/4" pre-formed, 6 x 19, wire strand core or independent wire rope core (IWRC), galvanized, right regular lay, manufactured of improved plow steel with a minimum breaking strength of 46,000 lbs.
- 22c.** The swaged fitting, stud, and nut shall develop the breaking strength of the wire rope.

		Roadside Safety and Physical Security Division - Proving Ground	
Project 490026-3-1	Short Radius Guardrail with 3:1 Slope	2016-08-08	
Drawn By GES	Scale 1:10	Sheet 22 of 22	Anchor Cable