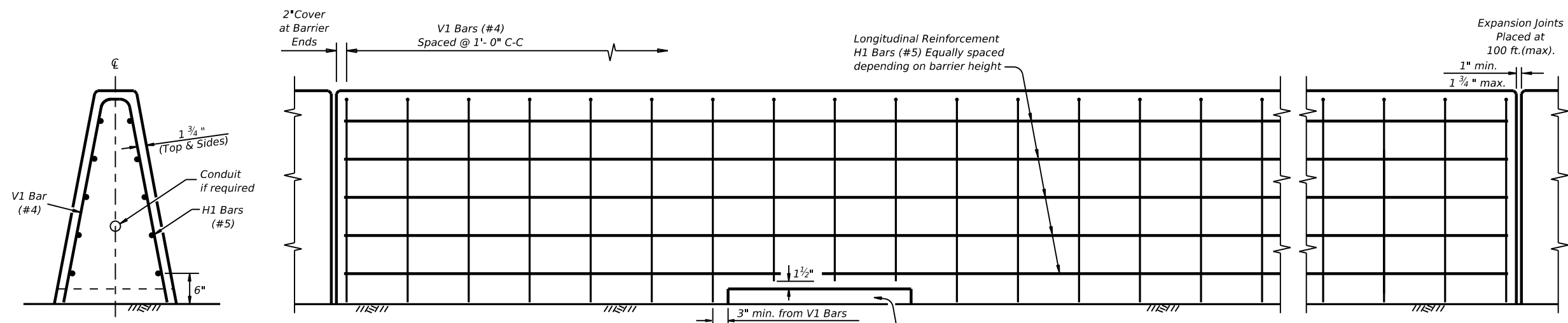


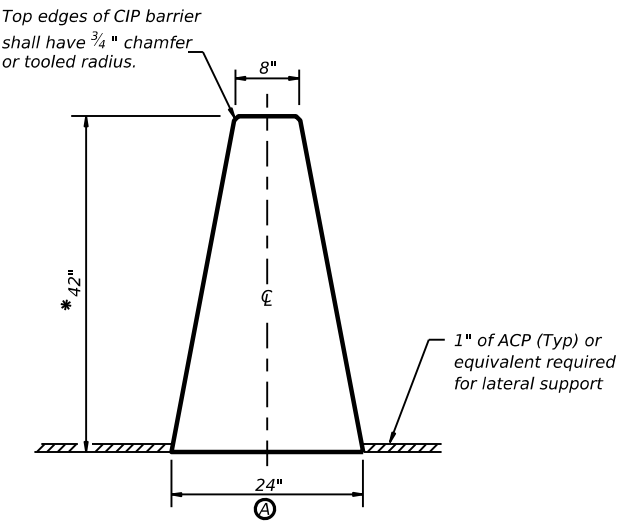
DISCLAIMER: The use of this standard is governed by the "Texas Engineering Practice Act". No warranty of any kind is made by TxDOT for any purpose whatsoever. TxDOT assumes no responsibility for the conversion of this standard to other formats or for incorrect results or damages resulting from its use.



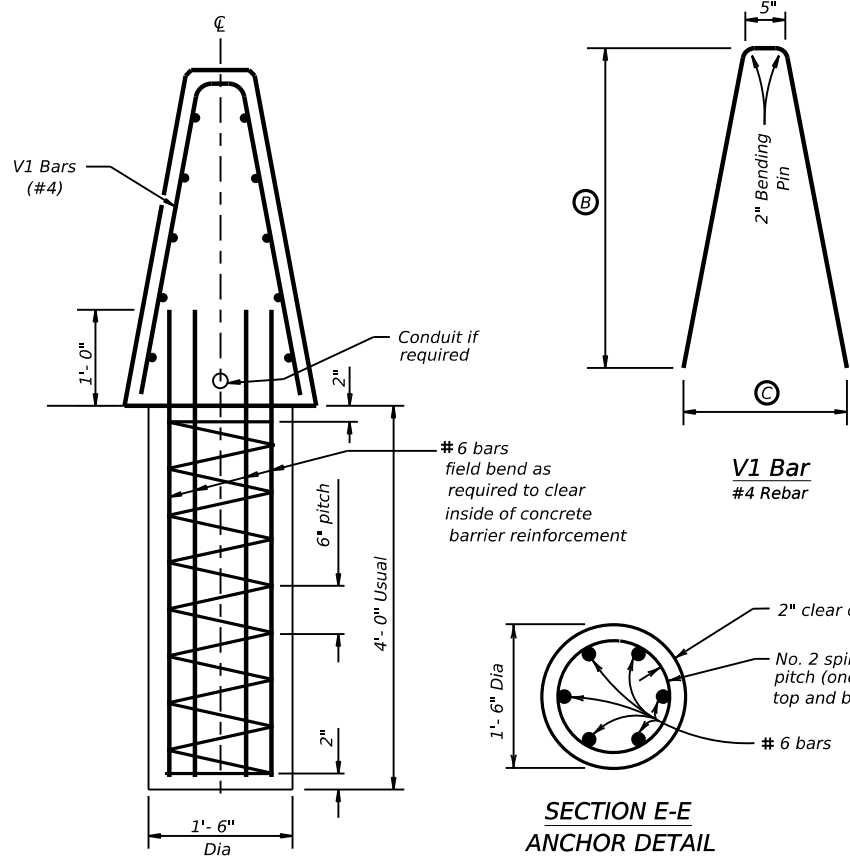
END VIEW
CAST-IN-PLACE (CIP) BARRIER
 Barrier is Symmetrical About the Center Line

ELEVATION VIEW
Cast-in-Place (SSCB) (Type 2) on Roadway

- GENERAL NOTES**
- Concrete shall be Class C. Unless otherwise specified in the plans.
 - Where used, rebar reinforcement shall be Grade 60 and conform to ASTM A615.
 - These details cover barrier per Item 514, "Permanent Concrete Traffic Barrier".
 - The Anchorage shown is considered subsidiary to the bid item.
 - Top edges of CIP barrier shall have a 3/4" chamfer or tooled radius.
 - Drainage slot locations (12'-0", C-C Min. Spacing) are shown elsewhere, or as directed by the Engineer. Drainage slot heights on the SSCB may be increased to a maximum of 5 inches, without geometric changes to the barrier face.
 - Cast-in-place barrier may be slip formed. Bracing may be tied or tack welded to the reinforcement cage to provide cage stability. Do not weld to anchorage.
 - For locations where lighting is required, see the SSCB(4) sheet for the proper reinforcement and anchorage.



SINGLE SLOPE CONCRETE BARRIER (SSCB) (42")



SECTION D-D ANCHOR DETAIL

SECTION E-E ANCHOR DETAIL

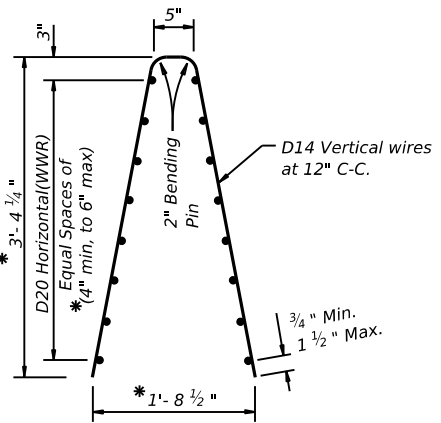
BARRIER HEIGHT (IN.)	* DIMENSIONS (IN.)		
	A	B	C
42	24	40 1/4	20 1/2
48	26 1/4	46 1/4	22 3/4
54	28 1/2	52 1/4	25 1/16

*(SSCB)(42") Barrier height may be increased to 48" or 54". This would increase the barrier and reinforcement dimensions accordingly.

Cast-In-Place (CIP) or Slip-Formed (SSCB)

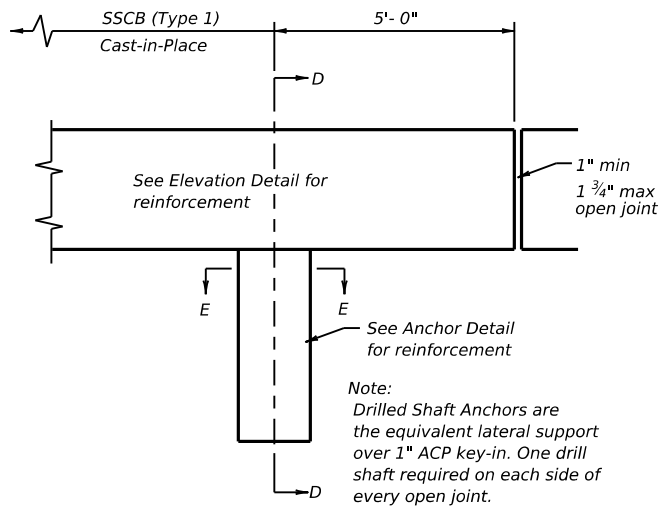
Cast-in-Place barrier may be connected to precast SSCB. Joint connection "Types" may be used in Cast-in-Place barrier, to match the precast barrier connection. (See required connection "Type" elsewhere in the plans)

The weight of Cast-in-Place (SSCB)42" is approx. 717 lbs per ft.

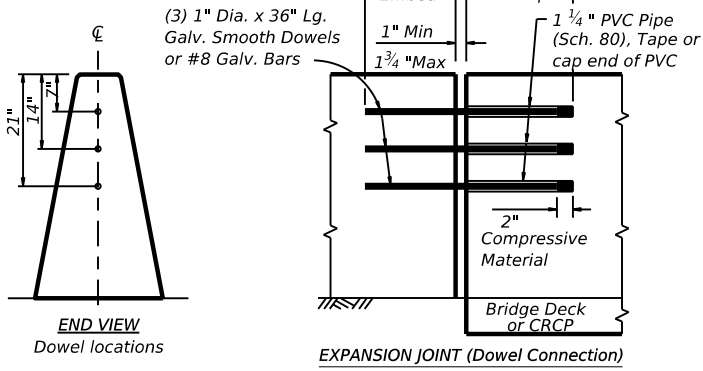


Welded Wire Reinforcement (WWR) Option for Bars V1 and H1

- (WWR) General Notes**
- Deformed Welded Wire Reinforcement (WWR) shall conform to ASTM A497.
 - Welded wire cage may be cut and bent to accommodate the drainage slots, as directed by the Engineer.
 - Welded wire splice locations shall have a "minimum" splice lap length of 12".
 - Combinations of reinforcing steel and WWR will be permitted, as directed by the Engineer. The dimension from the end of the barrier section to the first wire shall not exceed 3".



ELEVATION ANCHOR LOCATION



EXPANSION JOINT (Dowel Connection)
 Dowels may be used, as directed by the Engineer, in locations where the barrier could be laterally displaced.

		Design Division Standard	
SINGLE SLOPE CONCRETE BARRIER CAST-IN-PLACE (TYPE 1) (FLEXIBLE PAVEMENT) SSCB(1F) - 10			
FILE: sscb1f10.dgn	DN: TxDOT	CK: AM	DW: BD
© TxDOT December 2010	CONT	SECT	JOB
REVISIONS			HIGHWAY
	DIST	COUNTY	SHEET NO.

DATE:
FILE: