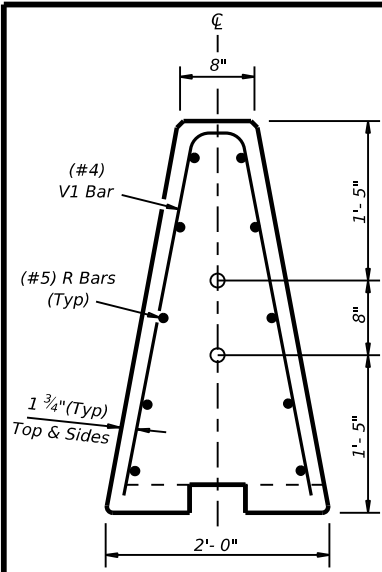
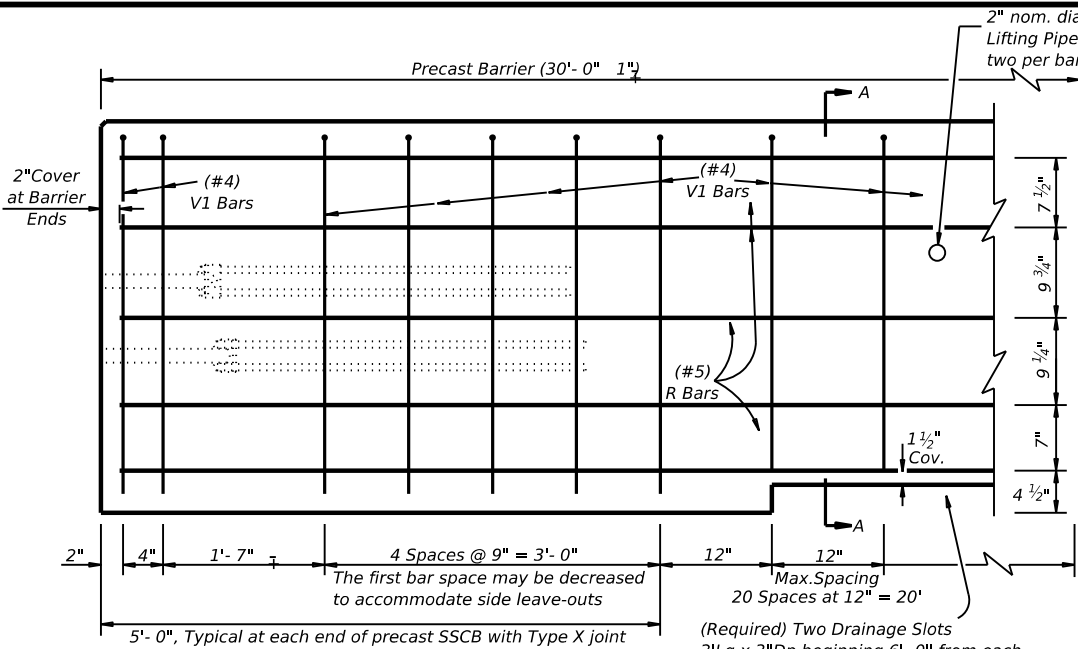


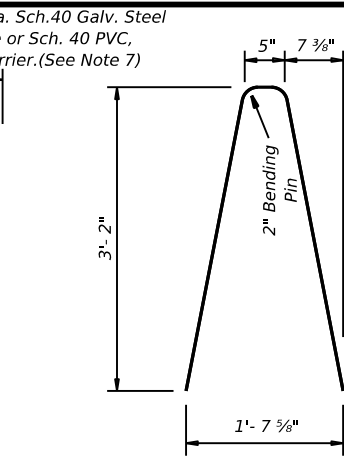
DISCLAIMER: The use of this standard is governed by the "Texas Engineering Practice Act". No warranty of any kind is made by TxDOT for any purpose whatsoever. TxDOT assumes no responsibility for the conversion of this standard to other formats or for incorrect results or damages resulting from its use.



**End View  
Precast Barrier**  
Pipe locations for Joint  
Type X connection

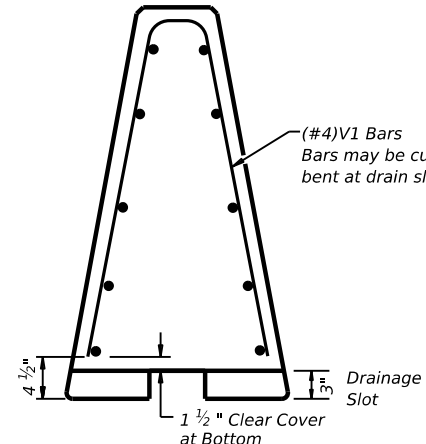


**Reinforcement for Precast (SSCB)  
Single Slope Concrete Barrier (Type 1)**  
Showing reinforcement for Joint Connection (Type X)



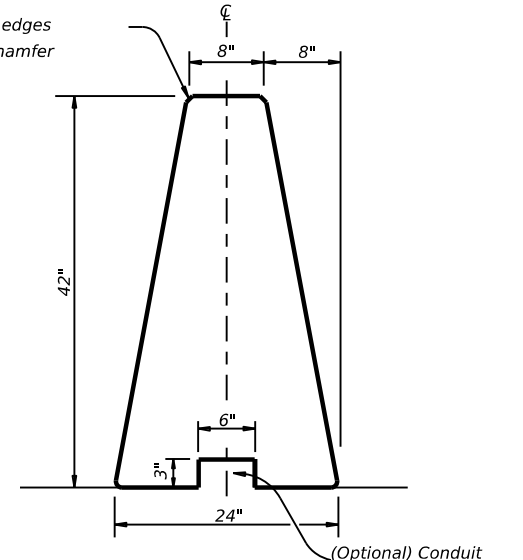
**V1 Bar  
#4 Rebar**

Note:  
V1 Bars above the drainage  
slots may be bent to accommodate  
1 1/2" clear cover as directed  
by the Engineer.



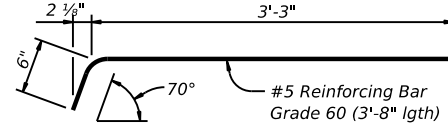
**Section A-A**  
Steel Placement at  
(Required) Drainage Slots

All precast barrier edges  
shall have a 3/4" chamfer  
or tooled radius.

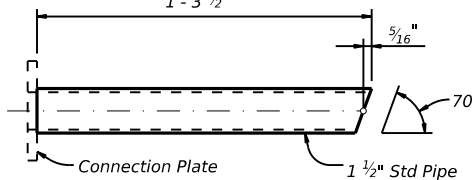


**Single Slope Concrete Traffic Barrier**

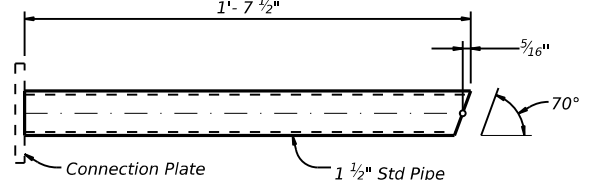
Precast SSCB barrier may be connected to cast-in-place  
SSBC. The joint connection "Types" may be used in the  
cast-in-place barrier, to match the precast barrier  
connection.



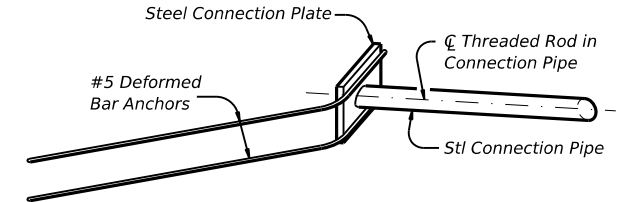
**DEFORMED BAR ANCHOR DETAILS**  
Two (2) Bars required per assembly.  
Eight (8) required per joint.



**UPPER CONNECTION PIPE DETAILS**  
One (1) Steel Pipe required per Upper Assembly.  
Two (2) required per joint.



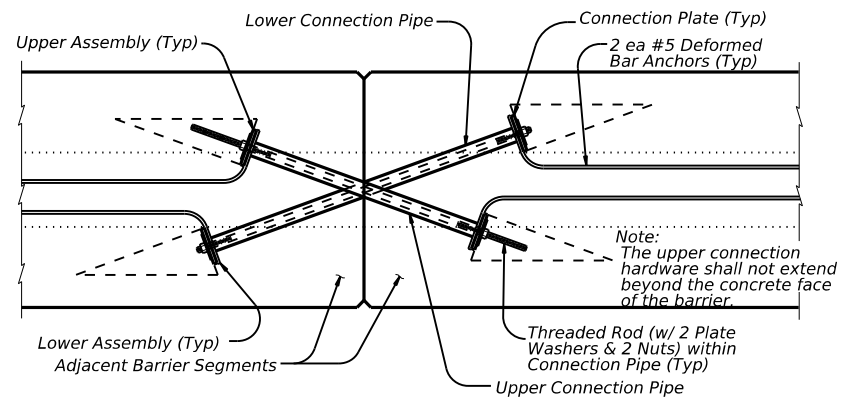
**LOWER CONNECTION PIPE DETAILS**  
One (1) Steel Pipe required per Lower Assembly.  
Two (2) required per joint.



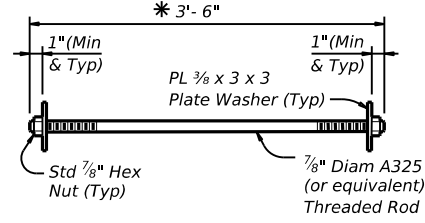
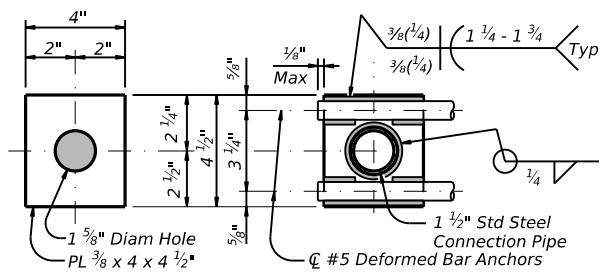
**ISOMETRIC OF  
TYPICAL WELDED ASSEMBLY**  
Four (4) [2 Upper & 2 Lower]  
Assemblies required per joint.

**General Notes**

- Concrete shall be Class H with a minimum compressive strength of 3,600 psi.
- Where used, rebar reinforcement shall be Grade 60 and conform to ASTM A615.
- Precast barrier length shall be 30 ft. unless otherwise specified on the plans.
- All precast barrier edges shall have a 3/4" chamfer or a tooled radius.
- All concrete, reinforcement, joint connection systems, grout etc. as shown, are considered as part of the barrier payment.
- Conduit trough when required shall be shown elsewhere on the plans, or as directed by the Engineer.
- Regardless of the method of handling, barrier lifting points shall be approx. 7.5 feet from the ends of the barrier. Lifting devices and attachments to barrier sections shall be approved by the Engineer.
- Surface finishing and grouting (where required) shall be two parts sand one part cement with enough water to make the mixture plastic. Grouting shall be done in a manner that will assure a smooth surface. Surface finishing shall be considered subsidiary to the various bid items.
- All steel assemblies shall be galvanized after fabrication in accordance with Item 445, "Galvanizing."



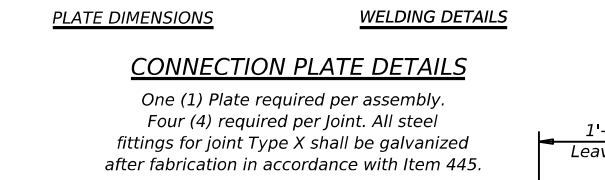
**TYPE X JOINT INSTALLATION DETAIL**  
Barrier reinforcing and Type X Joint Leave-Out  
dimensions not shown for clarity.



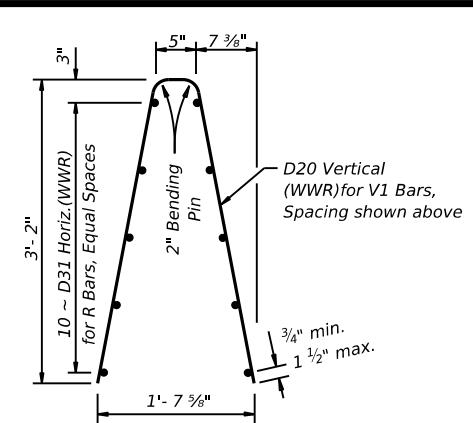
**CONNECTION BOLT OR  
THREADED ROD DETAIL**  
Two (2) Threaded Rods (Or Equivalent  
Hex Hd. Bolts)  
(w/ Two (2) PL 3/8 x 3 x 3  
Plate Washers & Two (2) Std Hex Nuts)  
required per joint.

\* The connection hardware shall not extend  
beyond the concrete face of the barrier.  
Hex head bolts may be provided. The proper  
length of all hardware should be verified.

Weight of one precast 30 ft.  
(SSCB) segment = Approx. 10.5 Tons  
or 717 lbs per ft.

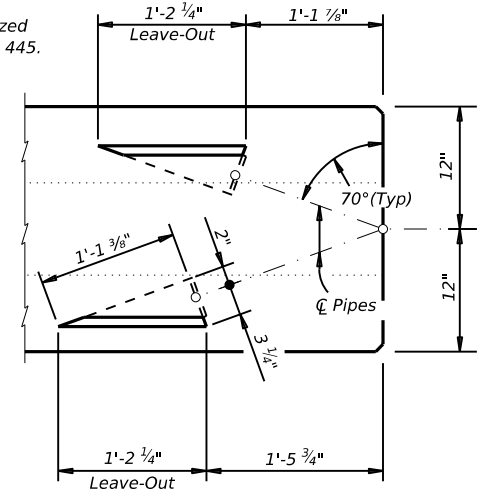


**CONNECTION PLATE DETAILS**  
One (1) Plate required per assembly.  
Four (4) required per joint. All steel  
fittings for joint Type X shall be galvanized  
after fabrication in accordance with Item 445.



**Welded Wire Reinforcement  
(WWR) Option for Bars R and V1**  
(WWR) General Notes

- Deformed Welded Wire Reinforcement (WWR) shall conform to ASTM A497.
- Welded wire cage may be cut or bent to accommodate the Type X joint connection and drainage slots, as directed by the Engineer.
- All reinforcement shall comply with Item 440, "Reinforcing Steel."
- Combinations of reinforcing steel and WWR will be permitted, as directed by the Engineer. The dimension from the end of the barrier section to the first wire shall not exceed 3".

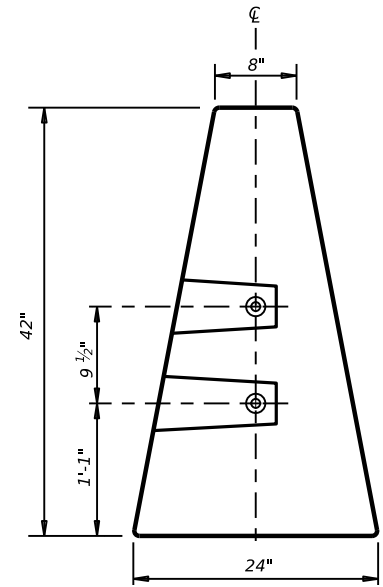


**BARRIER PLAN AT JOINT**

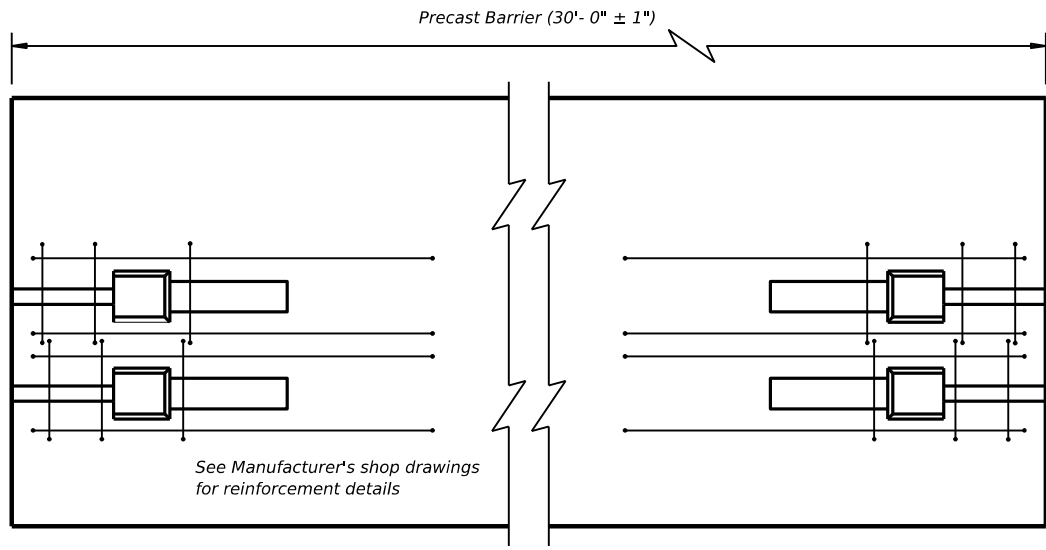
		<b>Design Division Standard</b>	
<b>SINGLE SLOPE CONCRETE BARRIER</b> PRECAST BARRIER (TYPE 1) <b>SSCB(2)-10</b>			
FILE: sscb210.dgn	DN: TxDOT	CK: AM	DW: BD
© TxDOT December 2010	CONT	SECT	JOB
REVISIONS			HIGHWAY
	DIST	COUNTY	SHEET NO.

DATE:  
FILE:

DISCLAIMER: The use of this standard is governed by the "Texas Engineering Practice Act". No warranty of any kind is made by TxDOT for any purpose whatsoever. TxDOT assumes no responsibility for the conversion of this standard to other formats or for incorrect results or damages resulting from its use.

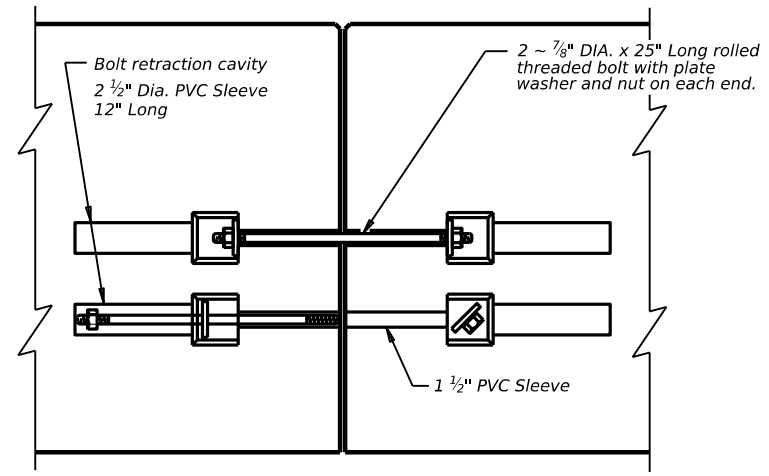


**END VIEW**  
"QUICK-BOLT" POCKET LOCATIONS



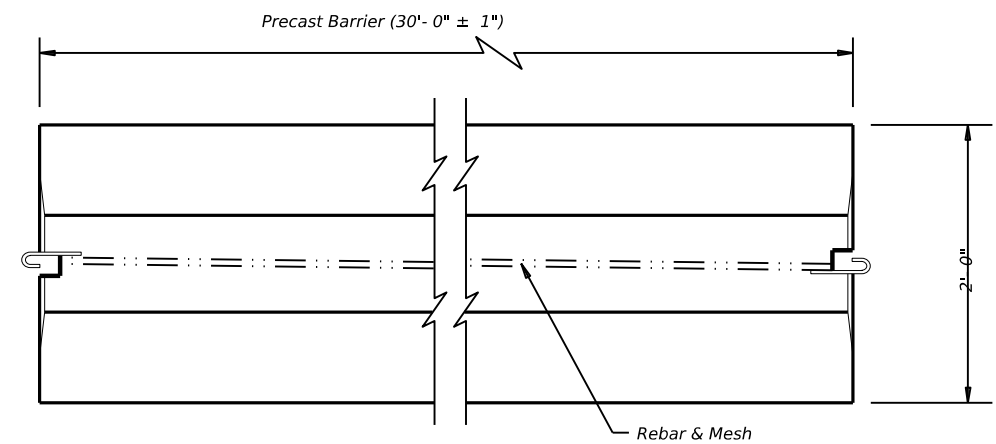
**ELEVATION VIEW**  
"QUICK-BOLT" (SSCB)

See Manufacturer's shop drawing for additional details



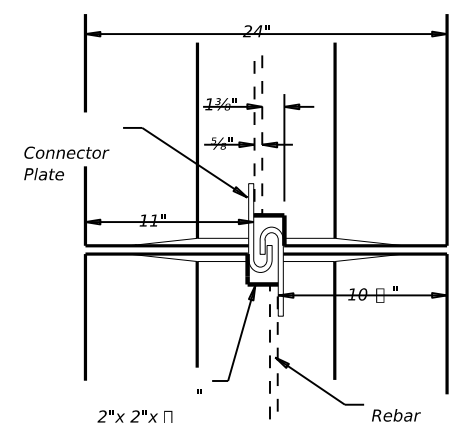
**ELEVATION VIEW SHOWING JOINT CONNECTION**  
"QUICK-BOLT"

**Joint Connection (Type Q)**

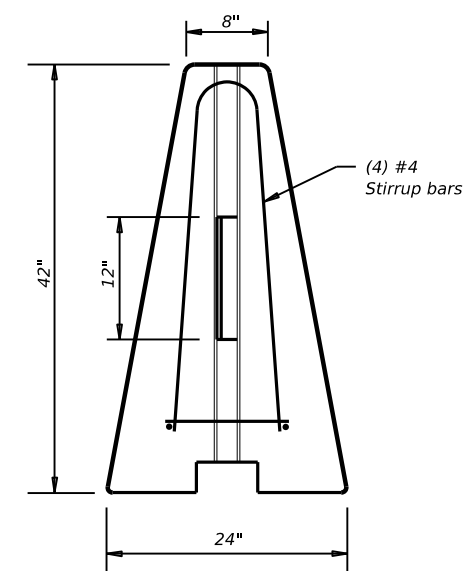


**TOP VIEW**  
PRECAST (SSCB) WITH J-J HOOKS

See Manufacturer's shop drawing for additional details



**VIEW FROM ABOVE**  
J-J HOOK CONNECTION



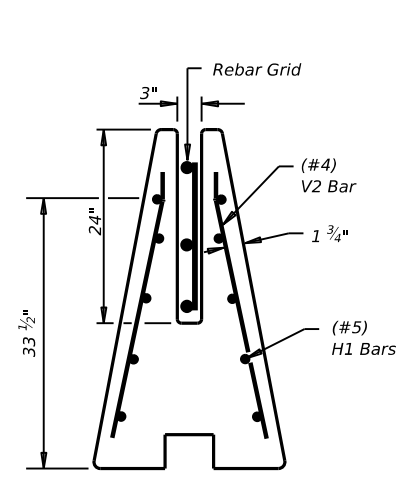
**END VIEW**

**Proprietary Joint Connections (SSCB)**

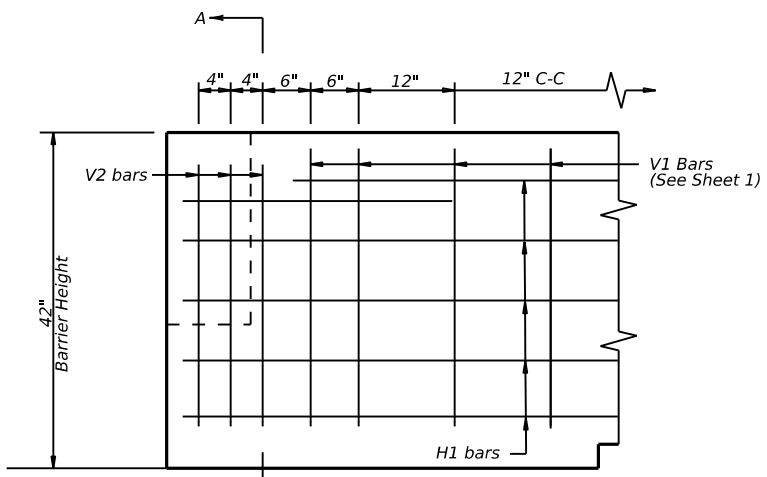
Two proprietary joint connections are acceptable as alternates to the (Type X) connection shown, here on. These joint connections types are:

JJ Hooks by Easi-Set Industries, (800)547-4045  
Quick-Bolt by Bexar Concrete, (210)497-3773

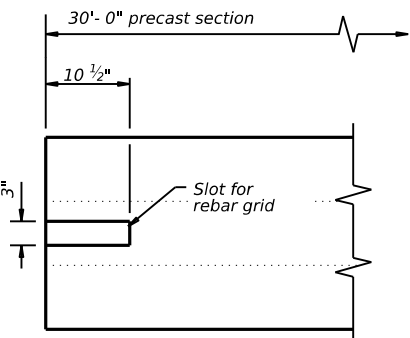
If one of these connection systems are exclusively specified in the plans, prior approval for sole source use must be obtained. Details of the connection components and barrier reinforcement for these systems, will be shown on the manufacturer's shop drawing(s) furnished to the Engineer.



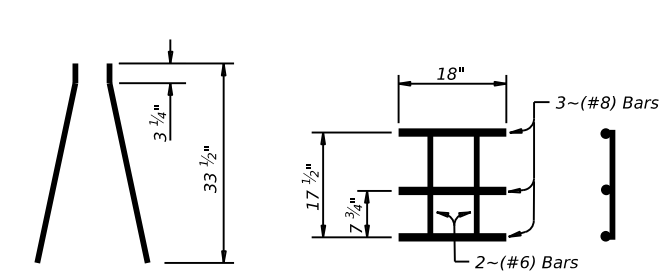
**SECTION A-A**  
Showing (Type R)  
Rebar Grid



**ELEVATION**  
V1 Bars (See Sheet 1)



**TOP VIEW**  
JOINT CONNECTION  
Typical at both ends of barrier segment



**(#4) V2 BARS**  
6 ~ two piece bars per barrier segment

**WELDED REBAR GRID**

**Joint Connection (Type R)**

**SINGLE SLOPE CONCRETE BARRIER**  
PRECAST BARRIER (TYPE 1)  
**SSCB (2) - 10**

FILE: sscb210.dgn	DN: TxDOT	CK: AM	DW: VP	CK:
© TxDOT December 2010	CONT	SECT	JOB	HIGHWAY
REVISIONS				
DIST	COUNTY			SHEET NO.

DATE:  
FILE: