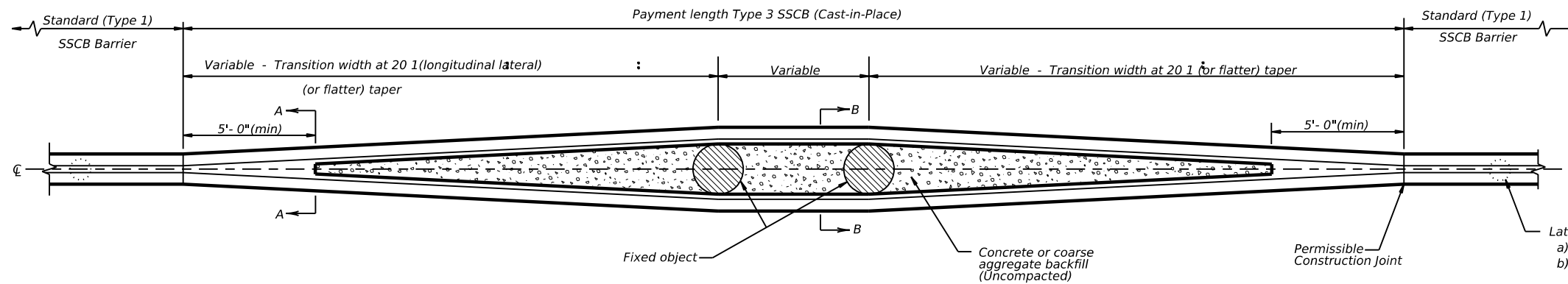
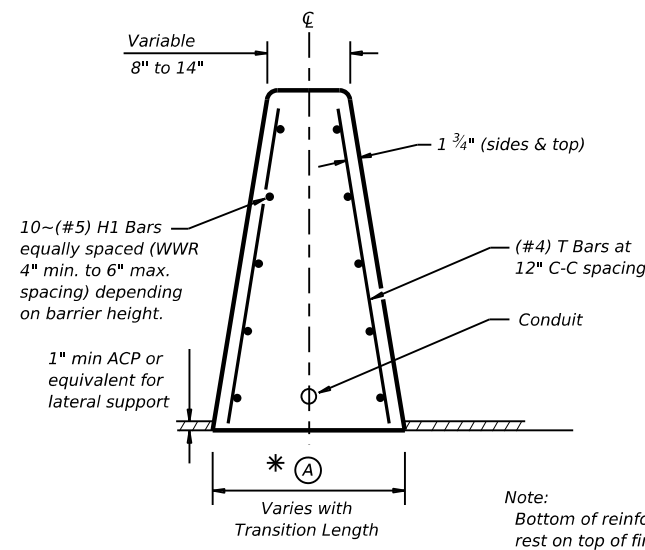


DISCLAIMER: The use of this standard is governed by the "Texas Engineering Practice Act". No warranty of any kind is made by TxDOT for any purpose whatsoever. TxDOT assumes no responsibility for the conversion of this standard to other formats or for incorrect results or damages resulting from its use.



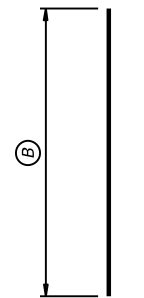
PLAN (TYPE 3) BARRIER

Lateral Support Options:
 a) 1" ACP, both sides of barrier, or
 b) 18" dia x 48" deep Drill Shaft, See SSCB(1F) sheet, or
 c) Rebar Anchorage, See SSCB(1) sheet.

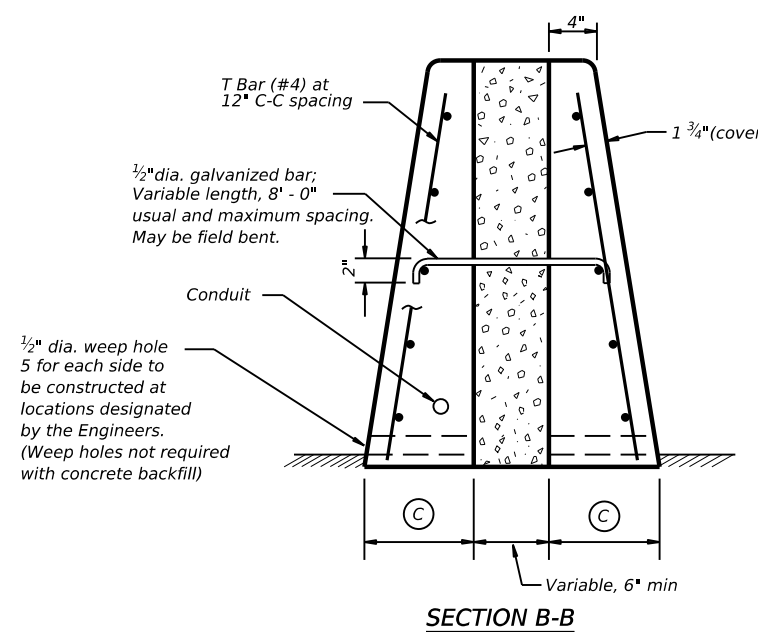


SECTION A-A

Note:
 Bottom of reinforcement cage may rest on top of finished grade.



T BAR (#4)



SECTION B-B

GENERAL NOTES

1. Axis of concrete barrier shall be vertical, except where roadway is superelevated, then axis shall be normal to roadway surface.
2. All steel that requires galvanizing shall be in accordance with Item 445, "Galvanizing."
3. Bid price per liner foot of (Type 3) SSCB, including anchor sections, shall include all of the concrete, reinforcement, and aggregate backfill.
4. All concrete shall be Class C.
5. Longitudinal and vertical bars for roadway barrier shall conform to ASTM A615 (Grade 60), unless otherwise specified.
6. At construction joints the longitudinal bars shall extend beyond the joint so that bar splices will be a minimum of two feet from the construction joint.
7. Welded wire reinforcement (WWR) may be used as an option to conventional reinforcement and shall meet requirements shown.
8. Any method devised by the contractor and approved by the Engineer that will assure the longitudinal steel for and (Type 3) SSCB will be positioned $\pm 1/2$ inch as dimensioned will be satisfactory.
9. Conduit to be provided only when called for elsewhere in the plans. Position of conduit may be adjusted to facilitate construction subject to the approval of the Engineer.
10. See SSCB(4) standard for barrier with illumination.

| Barrier height (IN.) | * Dimensions (IN.) | | |
|----------------------|--------------------|--------|--------|
| | A | B | C |
| 42 | 24 Plus | 40 1/4 | 12 |
| 48 | 26 1/4 Plus | 46 1/4 | 13 1/2 |
| 54 | 28 1/2 Plus | 52 1/4 | 14 1/4 |

*(SSCB)(42") Barrier height may be increased to 48" or 54". This would increase the barrier and reinforcement dimensions accordingly.

Welded Wire Reinforcement (WWR) Option for Bars T and H1 (Type 3) Barrier

(WWR) General Notes

1. WWR design required for (Type 3) SSCB barrier:
 D14 vertical (12" C-C) x D20 horizontal wires spaced (4" min. to 6" max.) as height requires.
2. Deformed Welded Wire Reinforcement (WWR) shall conform to ASTM A497.
3. Welded wire cage may be cut and bent to accommodate the drainage slots, as directed by the Engineer.
4. Welded wire splice locations shall have a "minimum" splice lap length of 12".
5. Combinations of reinforcing steel and WWR will be permitted, as directed by the Engineer. The dimension from the end of the barrier section to the first wire shall not exceed 3".

| | | | | | |
|--|-----------|--------|--------|--------------------------|--|
| | | | | Design Division Standard | |
| SINGLE SLOPE CONCRETE BARRIER CAST-IN-PLACE (TYPE 3) AT FIXED OBJECTS SSCB (3) - 10 | | | | | |
| FILE: sscb310.dgn | DN: TxDOT | CK: AM | DW: BD | CK: | |
| © TxDOT December 2010 | CONT | SECT | JOB | HIGHWAY | |
| REVISIONS | | DIST | COUNTY | SHEET NO. | |

DATE:
FILE: