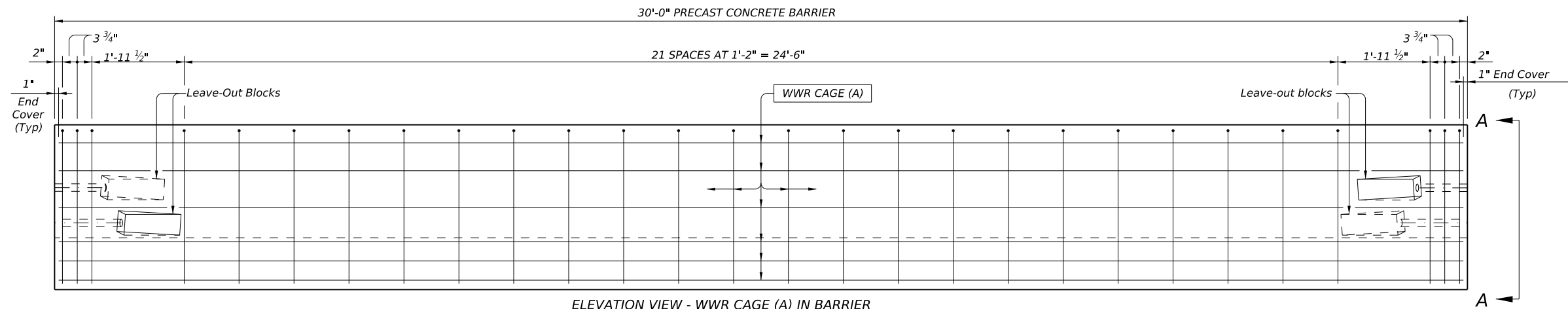
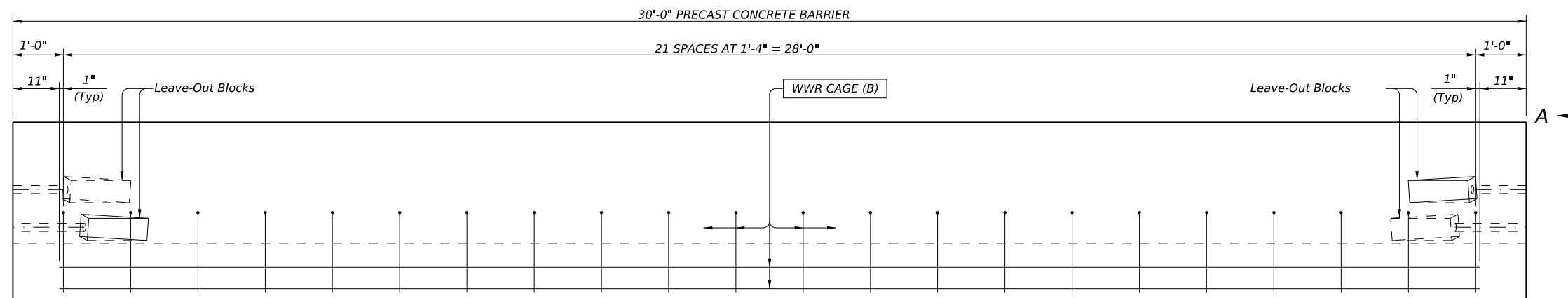


DISCLAIMER: THE USE OF THIS STANDARD IS GOVERNED BY THE "TEXAS ENGINEERING PRACTICE ACT". NO WARRANTY OF ANY KIND IS MADE BY TxDOT FOR ANY PURPOSE WHATSOEVER. TxDOT ASSUMES NO RESPONSIBILITY FOR THE CONVERSION OF THIS STANDARD TO OTHER FORMATS OR FOR INCORRECT RESULTS OR DAMAGES RESULTING FROM ITS USE.

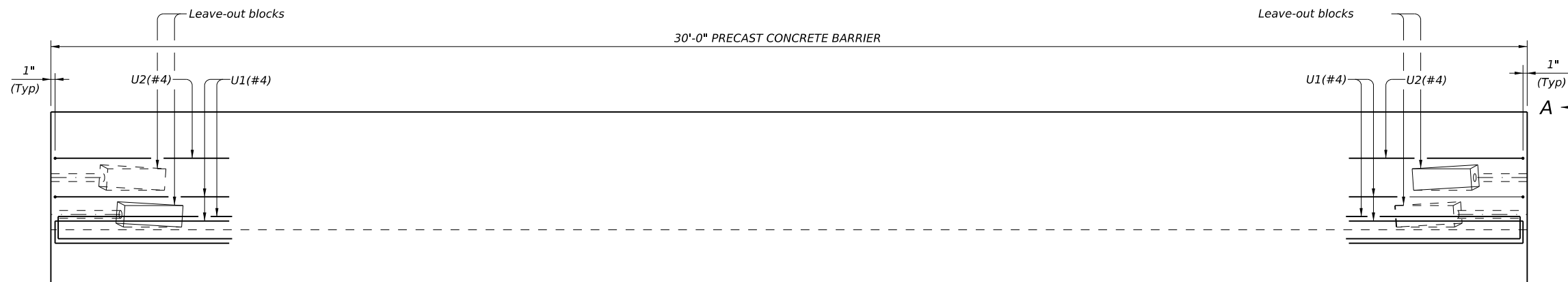
DATE:  
FILE:



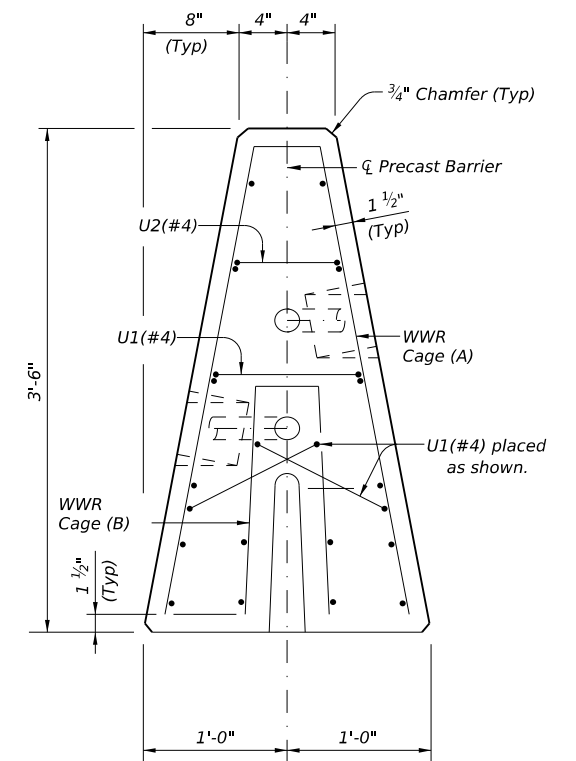
ELEVATION VIEW - WWR CAGE (A) IN BARRIER  
(REINFORCING STEEL CAGE B, U1(#4), U2(#4), NOT SHOWN FOR CLARITY)



ELEVATION VIEW - WWR CAGE (B) IN BARRIER  
(REINFORCING STEEL CAGE A, U1(#4), U2(#4), NOT SHOWN FOR CLARITY)



ELEVATION VIEW U(#4) BARS PLACEMENT IN BARRIER  
(REINFORCING STEEL CAGE A & CAGE B NOT SHOWN FOR CLARITY)



VIEW A-A

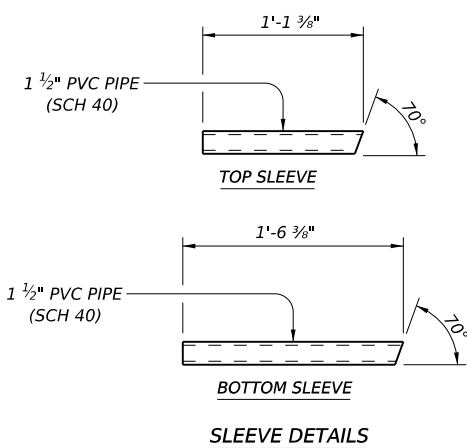
NOTE: THREADED RODS WITH NUTS AND WASHERS FOR X-BOLT CONNECTION NOT SHOWN FOR CLARITY.

SHEET 1 OF 2

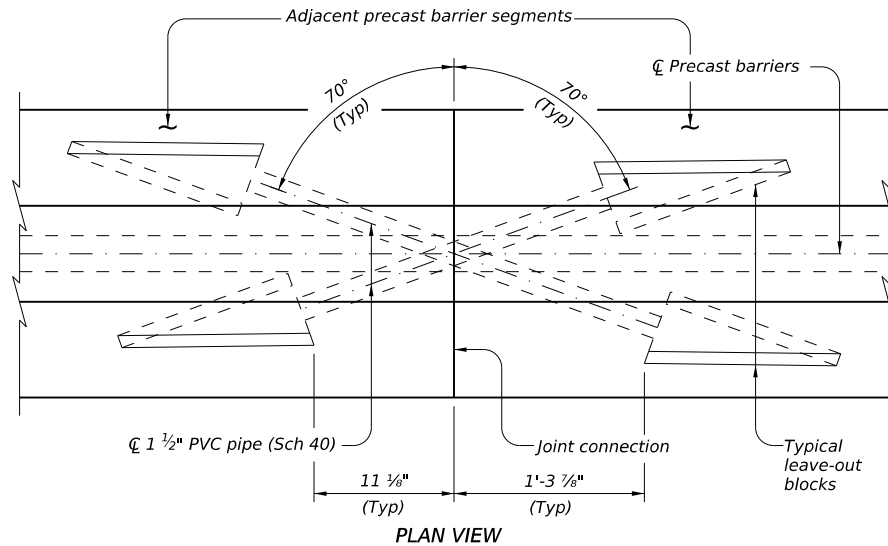
		<b>Design Division Standard</b>	
<b>SINGLE SLOPE CONCRETE BARRIER (PRECAST) X-BOLT CONNECTION UNRESTRAINED MASH TL-4 SSCB-P (XB2) -20</b>			
FILE: sscbpxb220.dgn	DN: TxDOT	CK: KM	DW: JTR
© TxDOT: NOVEMBER 2020	CON	SECT	JOB
REVISIONS	DIST	COUNTY	SHEET NO.

DISCLAIMER: THE USE OF THIS STANDARD IS GOVERNED BY THE TEXAS ENGINEERING PRACTICE ACT. NO WARRANTY OF ANY KIND IS MADE BY TxDOT FOR ANY PURPOSE WHATSOEVER. TxDOT ASSUMES NO RESPONSIBILITY FOR THE CONVERSION OF THIS STANDARD TO OTHER FORMATS OR FOR INCORRECT RESULTS OR DAMAGES RESULTING FROM ITS USE.

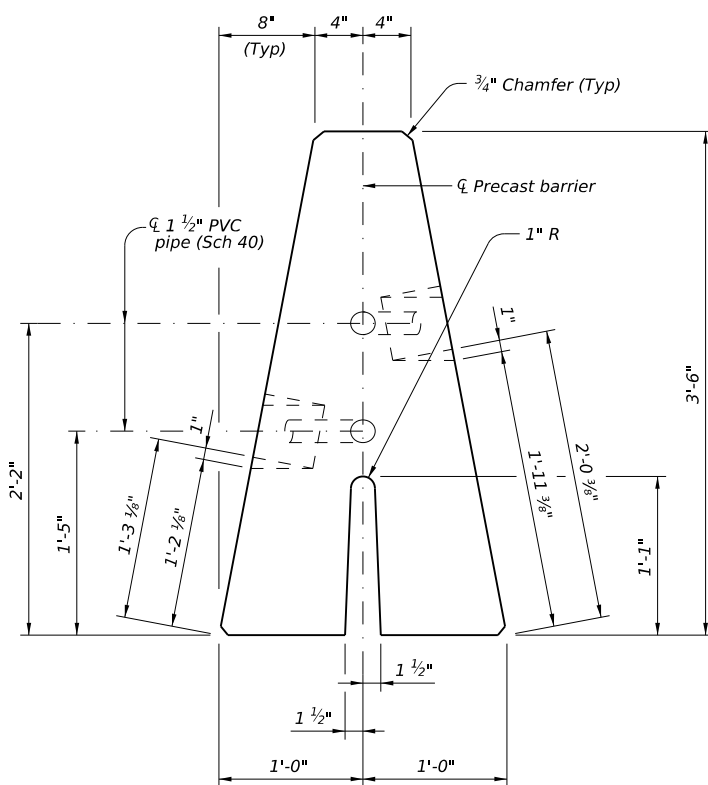
DATE: FILE:



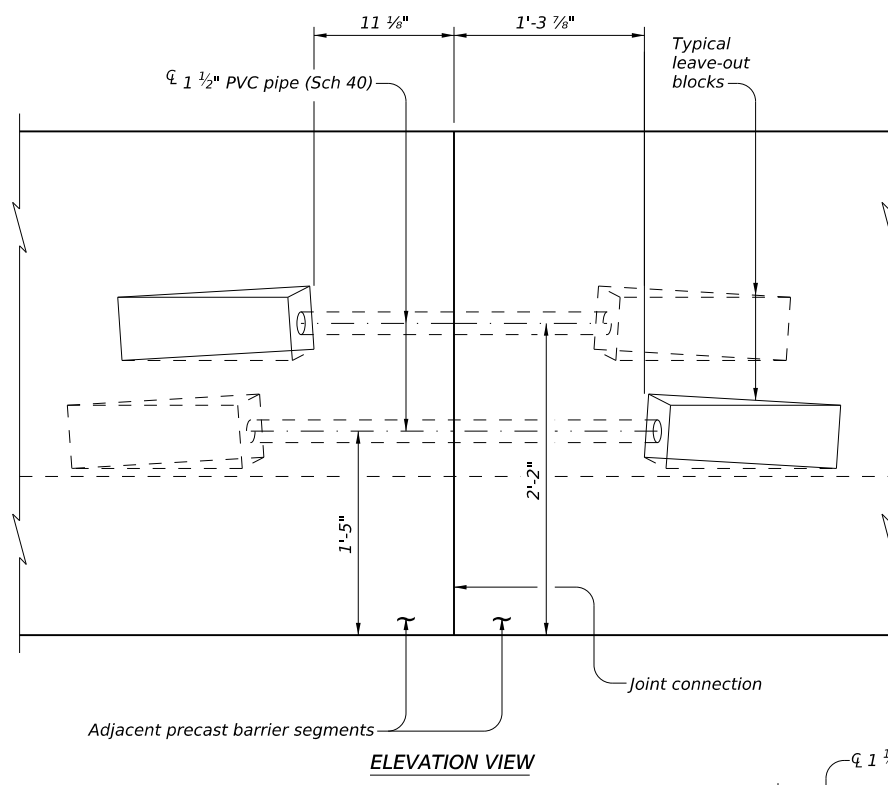
SLEEVE DETAILS



PLAN VIEW

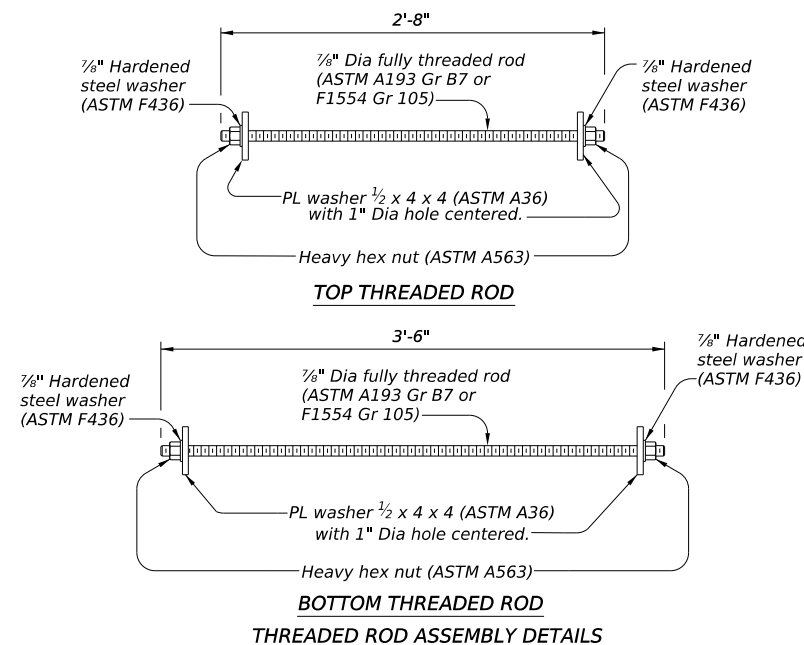


SECTION AT BARRIER JOINT

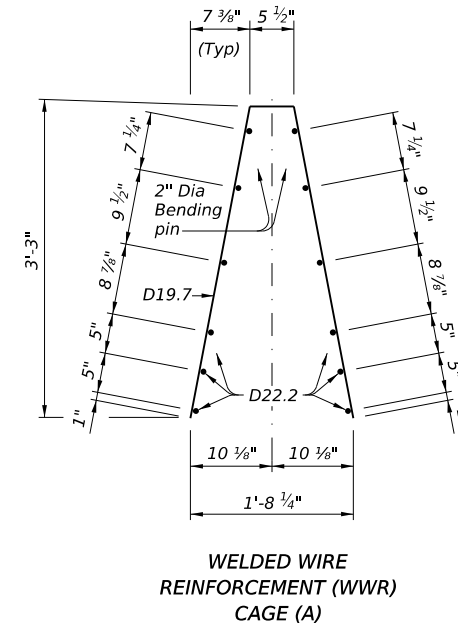


ELEVATION VIEW

X-BOLT CONNECTION WITH FORMING & LEAVE-OUT BLOCK PLACEMENT DETAILS REINFORCING STEEL AND THREADED RODS WITH NUTS AND WASHERS NOT SHOWN FOR CLARITY.



Showing hardware for one complete X-bolt connection. Installation of threaded rods must not extend beyond face of barrier.



WELDED WIRE REINFORCEMENT (WWR) CAGE (A)

CONSTRUCTION NOTES:

At the Contractor's or Engineer's direction provide lifting devices (lugs, loops, etc.) in the rail. Locate lifting devices in rail so as to not exceed tensile strength of the concrete during lifting. Galvanize all permanent steel lifting components. Chamfer all exposed corners.

MATERIAL NOTES:

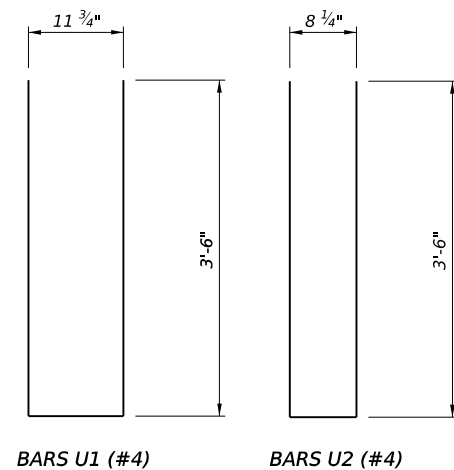
Galvanize all metal components of barrier system. Provide Class "S" concrete ( $P_c = 4,000$  psi). Provide Class "S" (HPC) if required elsewhere. Galvanize all reinforcing steel and WWR if required or shown elsewhere. Provide Grade 60 reinforcing steel. Provide deformed welded wire reinforcement (WWR) (ASTM A1064). Provide welded wire reinforcement (WWR) laps, where required, as follows: Uncoated or galvanized ~ D22.2 = 1'-7"

GENERAL NOTES:

This barrier system has been successfully evaluated by full-scale crash test to meet MASH TL-4 criteria. This barrier system is designed to have approximately 33 inches of dynamic or permanent deflection as it contains and redirects the TL-4 (single-unit truck) errant vehicle. This barrier system is designed to have approximately 15 inches of dynamic or permanent deflection as it contains and redirects the TL-3 (pickup truck) errant vehicle.

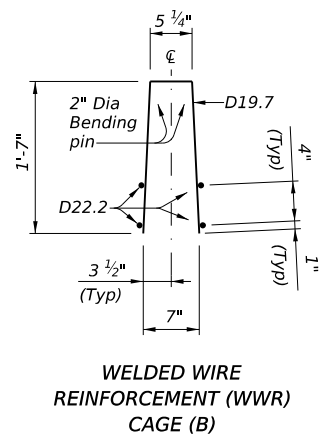
Average weight of one 30' precast barrier is 19,960 Lb. Average weight of precast barrier is 665 plf.

Cover dimensions are clear dimensions, unless noted otherwise. Reinforcing bar dimensions shown are out-to-out of bar.

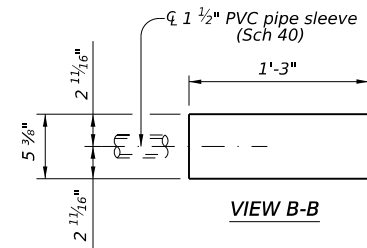


BARS U1 (#4)

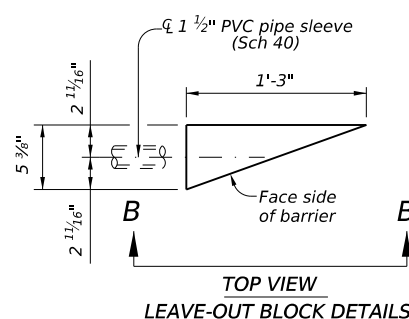
BARS U2 (#4)



WELDED WIRE REINFORCEMENT (WWR) CAGE (B)



VIEW B-B



TOP VIEW LEAVE-OUT BLOCK DETAILS

SHEET 2 OF 2

		<b>Design Division Standard</b>	
<b>SINGLE SLOPE CONCRETE BARRIER (PRECAST) X-BOLT CONNECTION UNRESTRAINED MASH TL-4 SSCB-P (XB2) -20</b>			
FILE: sscbpxb220.dgn	DN: TxDOT	CK: KM	DW: JTR
© TxDOT: NOVEMBER 2020	CON: SECT	JOB: HIGHWAY	
REVISIONS		DIST	COUNTY
			SHEET NO.