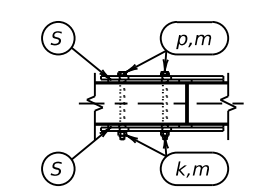
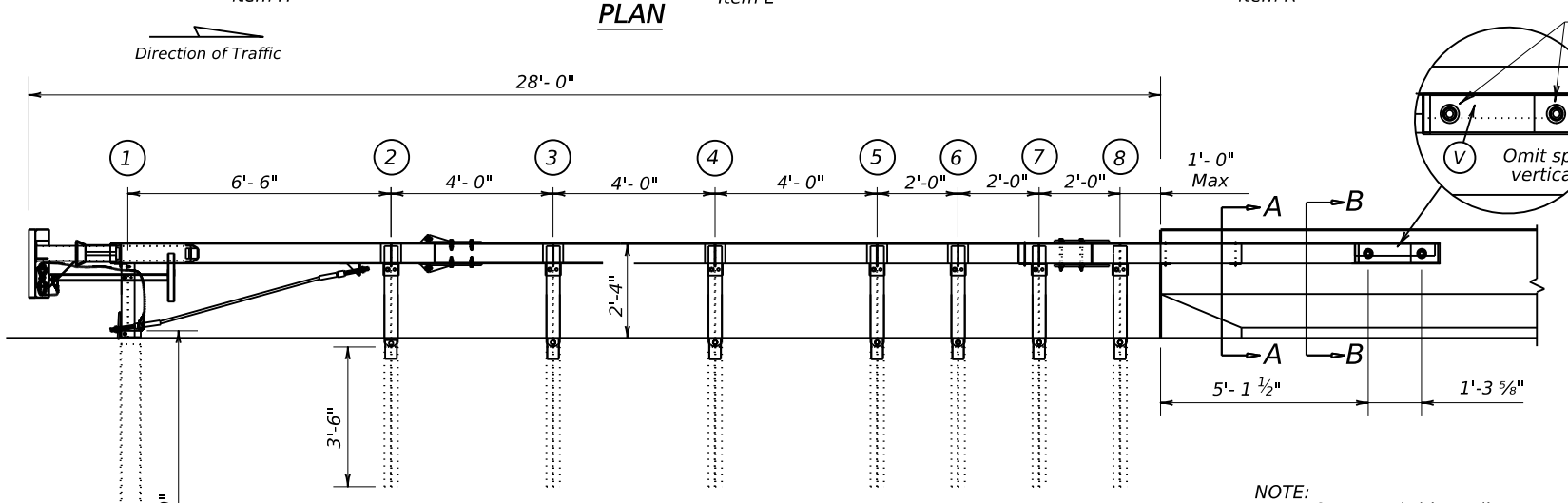
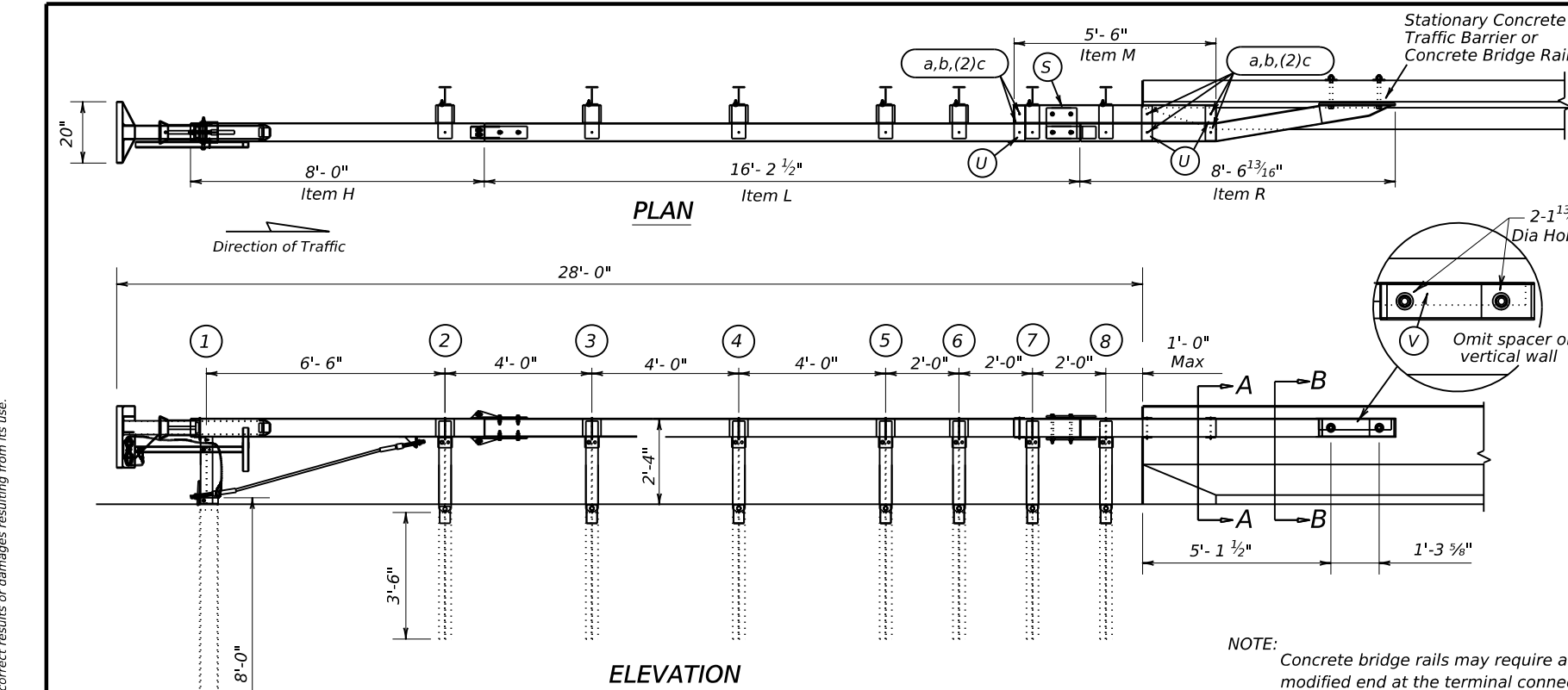
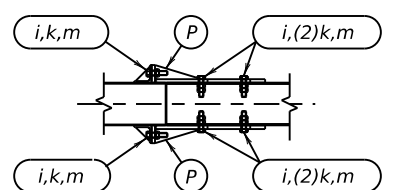


DISCLAIMER:
The use of this standard is governed by the "Texas Engineering Practice Act". No warranty of any kind is made by TxDOT for any purpose whatsoever. TxDOT assumes no responsibility for the conversion of this standard to other formats or for incorrect results or damages resulting from its use.

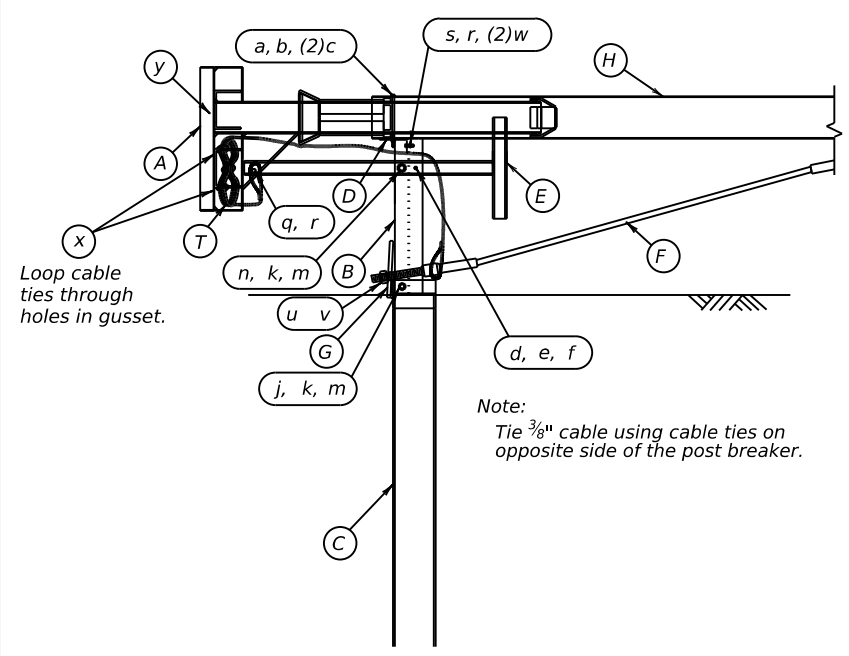


SPlice PLATE DETAIL

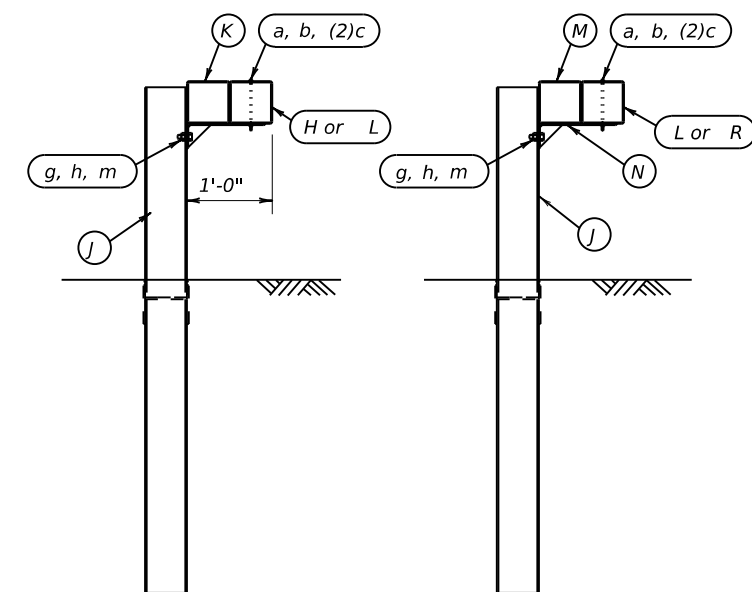


END SPlice PLATE DETAIL

NOTE:
Concrete bridge rails may require a modified end at the terminal connection. (Contact the Bridge Division for details.)

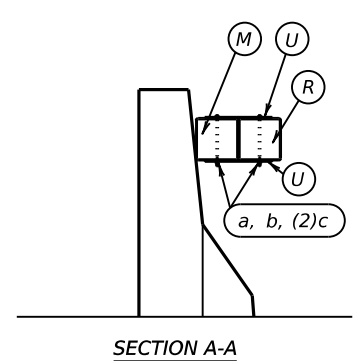


POSTS 1 IMPACT HEAD DETAIL

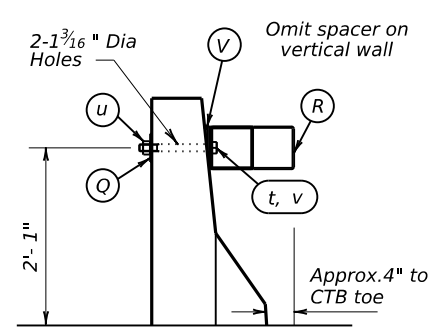


POSTS 2 THRU 6

POSTS 7 & 8



SECTION A-A



SECTION B-B

GENERAL NOTES

- For specific information regarding installation and technical guidance of the system, contact: Road Systems, Inc., at (330)346-0721. 3616 Old Howard County Airport. Big Springs, TX 79720
- Due to the Single-Sided design, the BEAT-SSCC is not appropriate for use at locations where backside hits towards the rigid concrete barrier are possible, e.g. In gore areas, or in narrow median locations where backside opposite direction hits are likely.
- All bolts, nuts, cable assemblies, cable anchors, bearing plate, tubing, post, impact heads, and other steel components shall be galvanized, unless otherwise noted.
- The breakaway cable assembly must be taut. A locking device, (vice grips or channel lock pliers) should be used to prevent the cable from twisting when tightening the nuts.
- When site conditions permit, posts may be driven. The lower section of post #1 should not be driven with the upper post section attached. If posts are placed in a drilled hole, the backfill material must be satisfactorily compacted to prevent settlement.
- If rock excavation is encountered, see manufacturer's installation booklet for installation recommendations.
- Post shall not be set full depth in concrete.
- The appropriate connection of the SSCC to the stationary rigid structure is a critical component to insure proper performance of the system. The length of the 1" bolts used to attach the system to the rigid structure will vary with the wall thickness and will need to be determined in the field.
- The approach area in front of the SSCC and the area within the system itself shall be free of fixed obstacles greater than 4 inches in height and have a fill slope or a cut slope of 1V:10H or flatter.
- Unless otherwise shown in the plans, SSCC rail placed in the vicinity of curbs shall be blocked out so that the face of curb is located directly below the face of rail. The steel posts shall be installed at the proper ground elevation above the gutter pan or roadway surface. Curbs located along or in front of the SSCC system shall not be greater than 4 inches in height.
- An object marker shall be installed on the front of the impact head as detailed on D & OM(VIA).

ITEM	QTY	DESCRIPTION
A	1	Box-Beam Impact Head
B	1	Upper End Post (A1) W6 x 9 x 1'-9 1/2" LG.
C	1	Lower End Post (A4) W6 x 15 x 8'-0" LG.
D	1	Support Bracket (B1) L4 x 2 x 4" LG.
E	1	Post Breaker (A2) Welded TS2 x 2 x 1/4"
F	1	Cable Anchor Assembly
G	1	Cable Anchor Bearing Plate
H	1	End Tube Rail (A5) x 8'-0" LG.
J	7	Steel Breakaway Post W6 x 9 x 6'-0" LG.
K	5	Support Bracket w/ Blockout (A9) TS6 x 6 w/ Bent PL.
L	1	Second Rail (A11) x 16'-2 1/2" LG.
M	1	Transition Blockout (A6) x 5'-6" LG.
N	2	Trans. Support Bracket (A10) 3/16" Bent PL w/ Gusset
P	2	End Section Splice Plate (A3) - Detail Below
Q	2	1" Square Washer (B10) PL 4 x 4 x 1/4"
R	1	Anchor Rail (A13) x 8'-6 13/16" LG.
S	2	Splice Plate (A12) PL 10 x 10 x 3/8" Detail Below
T	1	3/8" GALV. Cable x 20'-0" (A14)
U	6	Tie Plate (C10) PL 11 1/2" x 3 1/2" x 3/16"
V	1	Spacer (D10) (OMIT ON VERTICAL WALL)
HARDWARE		
a	14	3/16" x 7 1/2" Hex Bolt (A449)
b	14	3/16" Hex Nut
c	28	3/16" Washer
d	1	1/4" x 3" Hex Bolt (A449)
e	1	1/4" Hex Nut
f	1	1/4" Washer
g	7	3/8" x 1 1/2" Bolt (A307)
h	7	3/8" Recess Nut
i	8	3/8" x 2" Hex Bolt (A325 or A449)
j	1	3/8" x 8" Hex Bolt (A325 or A449)
k	18	3/8" Hex Nut
m	25	3/8" Washer
n	1	3/8" x 3" Hex Bolt (A325 or A449)
p	4	3/8" x 9" Hex Bolt (A325 or A449)
q	1	1/2" x 5" Hex Bolt (A325 or A449)
r	2	1/2" Hex Nut
s	1	1/2" x 2" Hex Bolt (A307, A325 or A449)
t	2	1" x 10" Hex Bolt (A325 or A449) (Length Varies w/Wall Sect)
u	4	1" Hex Nut (2H Heavy Hex Nut)
v	4	1" Washer Structural Washer
w	2	1/2" Washer
x	2	Cable Tie
y	1	Object Marker

ROAD SYSTEMS INC
CRASH CUSHION
(BEAT)
SSCC-16

Design Division Standard

FILE: ssc16.dgn DN: TxDOT CK: KM DW: BD CK: VP
 © TxDOT April 2003 CONT SECT JOB HIGHWAY
 REVISIONS
 REVISED 03, 2016 (VP) DIST COUNTY SHEET NO.

DATE:
FILE: