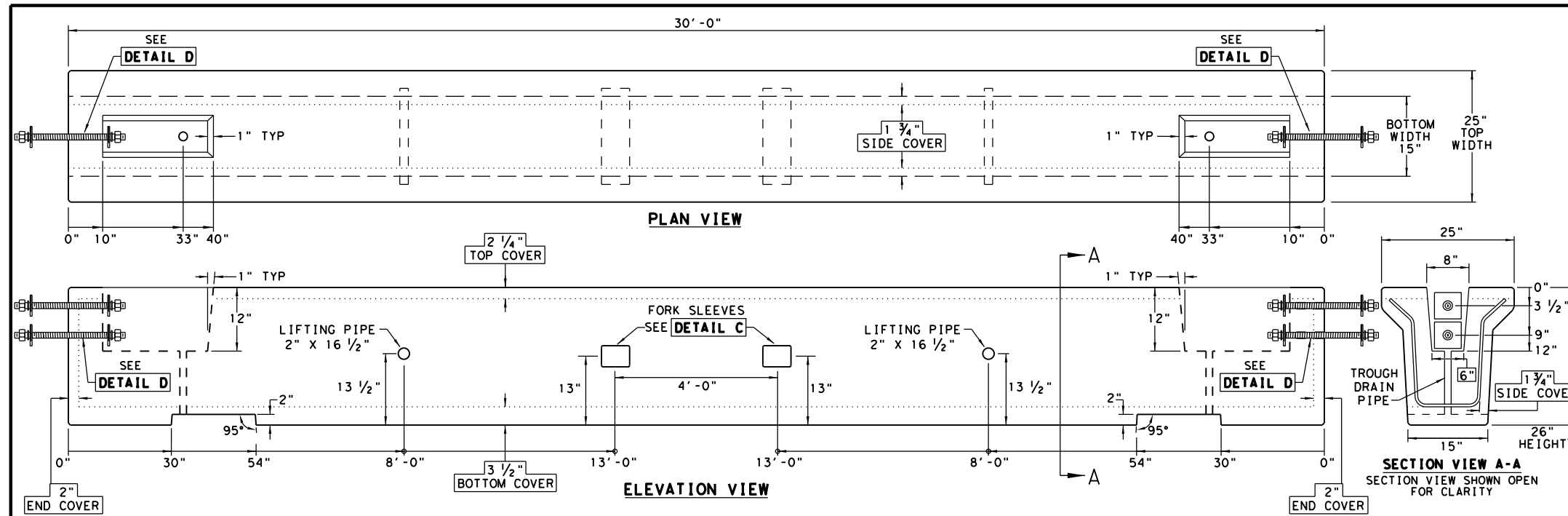


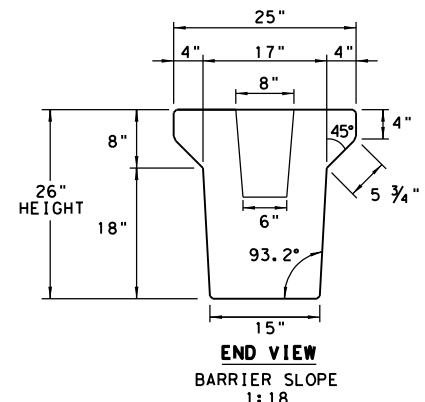
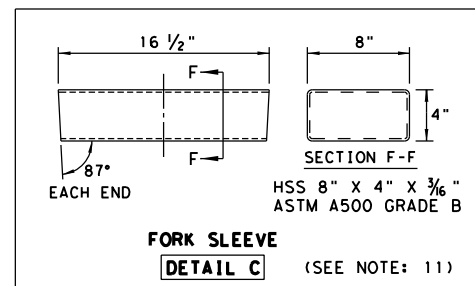
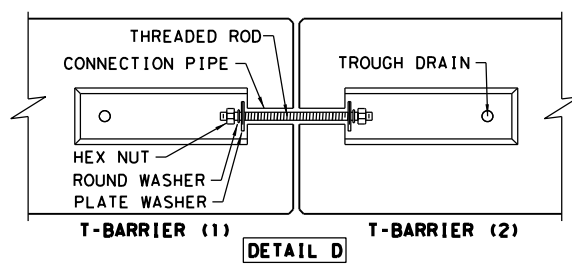
DISCLAIMER: The use of this standard is governed by the "Texas Engineering Practice Act". No warranty of any kind is made by TxDOT for any purpose whatsoever. TxDOT assumes no responsibility for the conversion of this standard to other formats or for incorrect results or damages resulting from its use.



- GENERAL NOTES**
1. THE TL-3 LOW PROFILE CONCRETE BARRIER IS APPROVED FOR USE WITHIN TEMPORARY WORK ZONE LOCATIONS FOR HIGH-SPEED CONDITIONS.
  2. PRECAST LOW PROFILE T-BARRIER (LPTB), LENGTH SHALL BE 30 FT.
  3. CONCRETE SHALL BE CLASS H WITH A MINIMUM COMPRESSIVE STRENGTH OF 3,600 PSI. CHAMFER EXPOSED EDGES 3/4" AS SHOWN ON DETAIL.
  4. JOINT CONNECTION HARDWARE SHALL BE IN ACCORDANCE WITH ITEM 449, "ANCHOR BOLTS," AND IS CONSIDERED SUBSIDIARY.
  5. ALL STEEL HARDWARE USED FOR JOINT CONNECTION SHALL BE IN ACCORDANCE WITH ITEM 445, GALVANIZING.
  6. PVC PIPE REQUIRED FOR THE JOINT CONNECTION, LIFTING PIPES AND TROUGH DRAINAGE PIPES SHALL BE IN ACCORDANCE WITH ITEM 481, AND MEET THE REQUIREMENTS OF ASTM D1785.
  7. WELDED WIRE CAGE MAY BE CUT OR BENT, IF NECESSARY, BUT MUST BE APPROVED BY THE ENGINEER.
  8. DEFORMED WELDED WIRE SHALL CONFORM TO ASTM A1064.
  9. WHERE USED, REBAR REINFORCEMENT SHALL BE GRADE 60 AND CONFORM TO ASTM A615.
  10. THE BARRIER SYSTEM IS DESIGNED TO HAVE APPROXIMATELY 25" OF DYNAMIC OR PERMANENT DEFLECTION AS IT CONTAINS AND REDIRECTS A TL-3 ERRANT PICKUP TRUCK. A MINIMUM LENGTH OF 180 FT. OF BARRIER RUN IS RECOMMENDED; SHORTER RUNS MAY BE CONSIDERED BUT DEFLECTIONS WOULD BE GREATER.
  11. THE FORK SLEEVES ARE OPTIONAL. ADDITIONALLY, THE FORK SLEEVES MAY BE MADE OF PVC.
  12. THE TL-3 LOW PROFILE BARRIER SHOULD NEVER BE ANCHORED IN ANY WAY.
  13. ANY EXPOSED END OF THE T-BARRIER OPEN TO END ON IMPACTS WITHIN THE CLEAR ZONE OF ADJACENT OR OPPOSITE DIRECTION TRAFFIC MUST EITHER BE SHIELDED BY AN APPROVED END TREATMENT (CONTACT DESIGN DIVISION (RDWY), 512-416-2678 FOR QUESTIONS); OR TAPERED AT A RATE OF 20:1 OR FLATTER UNTIL THE EXPOSED END OF THE BARRIER IS OUTSIDE OF THE CLEAR ZONE; OR THE EXPOSED END OF THE BARRIER IS RECOMMENDED TO BE OVERLAPPED A MINIMUM OF 100 FEET BY AN ADJACENT PERMANENT OR TEMPORARY BARRIER IN A MANNER SUCH THAT NO EXPOSED END IS OPEN TO A HEAD ON IMPACT.

**CONNECTION ROD HARDWARE (SEE DETAIL D)**

QTY	PART NAME	SIZE
2	THREADED ROD (ASTM A193 GR.B7)	7/8" X (26" LENGTH)
4	ROUND WASHER (ASTM F436)	7/8"
4	PLATE WASHER (A36)	5" X 5" X 1/2" THICK WITH 1" DIA. HOLE
4	HEAVY HEX NUT (ASTM A563)	7/8"
2	TROUGH DRAIN	1 1/2" X 12" PVC PIPE
4	CONNECTION PIPE	1 1/2" X 10" PVC PIPE



**WWR & REBAR INFORMATION TABLE**

QTY	WWR - BAR	SIZE	DETAIL
31	WWR V	#4 - WWR D20	DETAIL A
6	WWR H	#5 - WWR D31	
6	BAR Y	#4	
2	BAR U1	#6 X 20" X 60"	DETAIL B
2	BAR U2	#6 X 13" X 60"	
2	BAR U3	#6 X 12" X 60"	
2	BAR U4	#6 X 11" X 60"	

**RIGID PVC PIPE (SCH 40) TABLE**

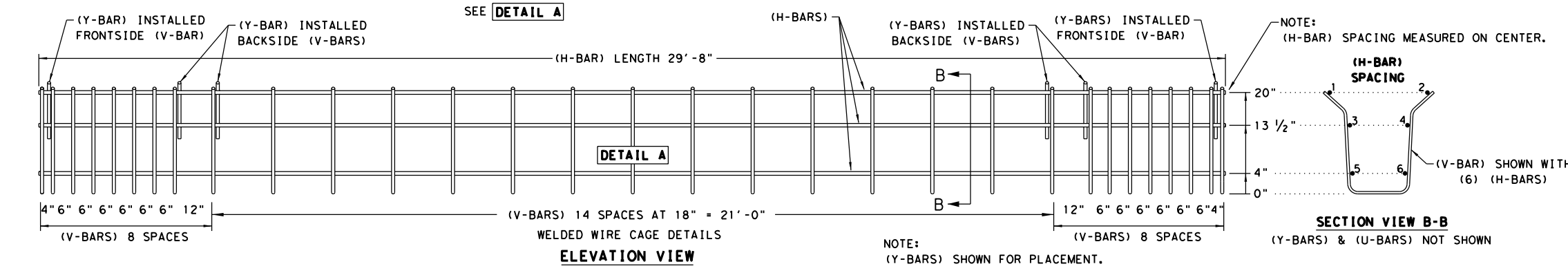
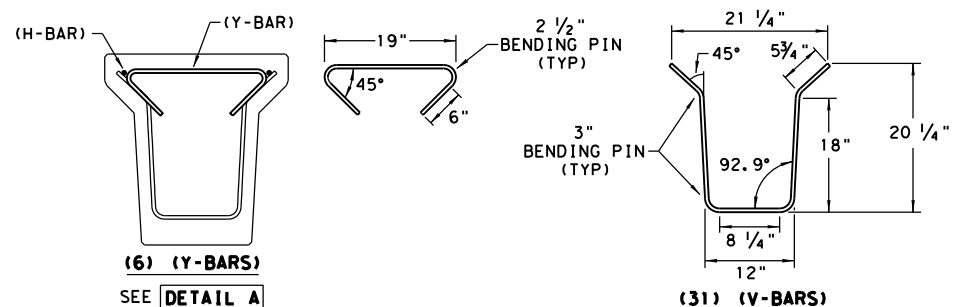
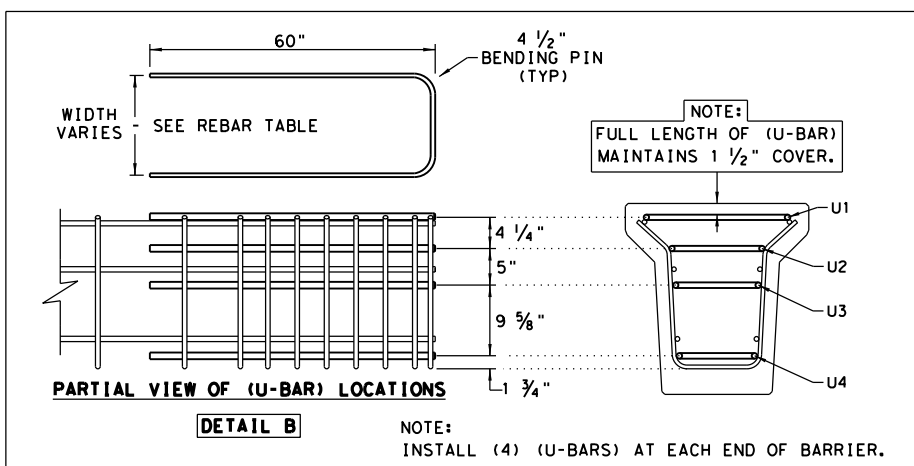
QTY	PART NAME	SIZE
4	CONNECTION ROD PIPE	1 1/2" X 10" LENGTH
2	TROUGH DRAIN	1 1/2" X 12" LENGTH
2	LIFTING PIPE	2" X 16 1/2" LENGTH

**COVER DIMENSIONS TABLE**

BARRIER TOP	2 1/4"
BARRIER TOP FULL LENGTH U-BAR	1 1/2"
BARRIER BOTTOM	3 1/2"
BARRIER SIDE	1 3/4"
BARRIER END	2"

WORKING WIDTH IS APPROXIMATELY 51 INCHES.

THE WEIGHT OF ONE T-SHAPE 30 FT. PRECAST BARRIER IS APPROX. 7.4 TONS OR 500 LBS PER FOOT.



Texas Department of Transportation

**LOW PROFILE T-BARRIER PRECAST CONCRETE MASH - TL-3 LPTB-22**

Design Division Standard

FILE: lptb21.dgn	DN: TxDOT	CK: KM	DW: CES	CK: CGL
© TxDOT: JULY 2022	CONT	SECT	JOB	HIGHWAY
REVISIONS	DIST	COUNTY	SHEET NO.	

DATE: FILE: