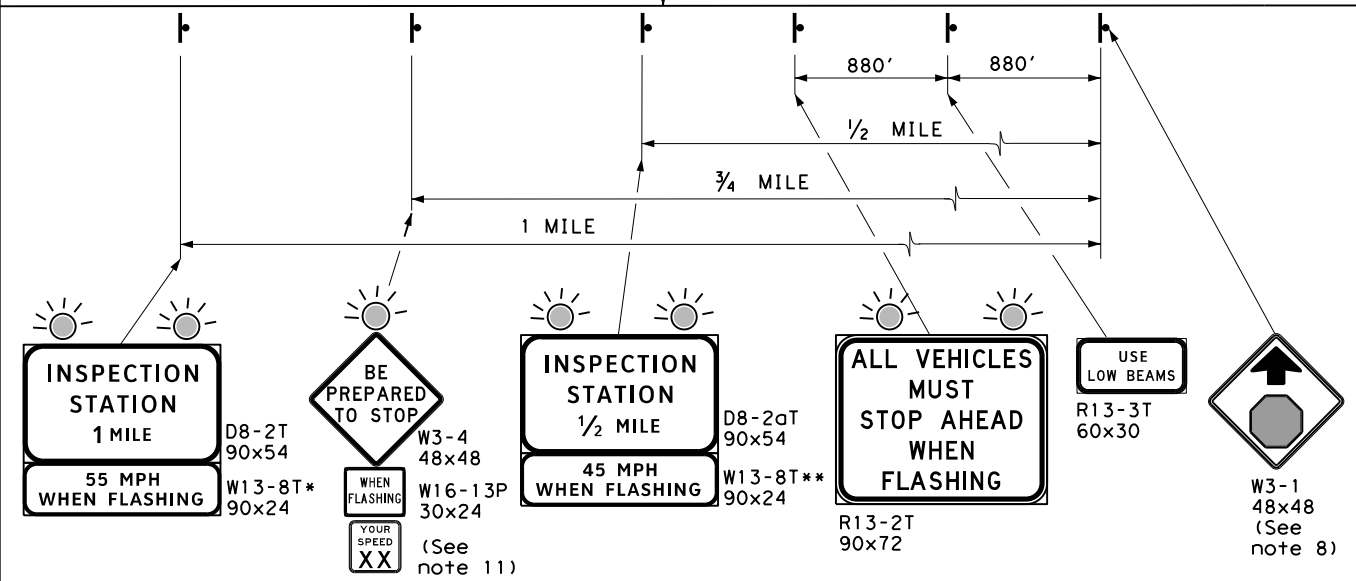
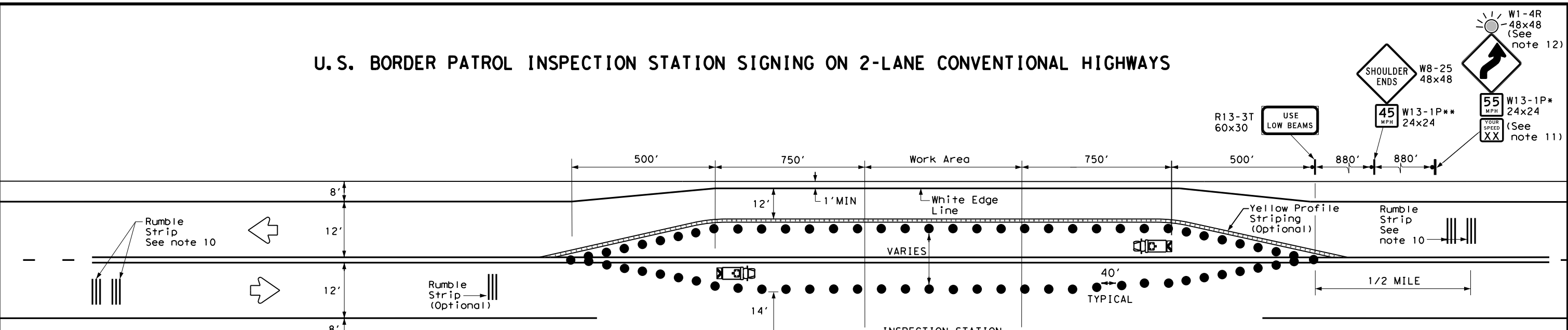


# U. S. BORDER PATROL INSPECTION STATION SIGNING ON 2-LANE CONVENTIONAL HIGHWAYS

DISCLAIMER: The use of this standard is governed by the "Texas Engineering Practice Act". No warranty of any kind is made by TxDOT for any purpose whatsoever. TxDOT assumes no responsibility for the conversion of this standard to other formats or for incorrect results or damages resulting from its use.



R1-1  
36x36  
or  
48x48  
(See  
note 8)

### GENERAL NOTES

- Signs to be furnished, should be as detailed elsewhere in the plans and/or as shown on sign tabulation sheet. Standard sign designs and arrow dimensions can be found in the "Standard Highway Sign Designs for Texas" (SHSD).
- Black legends shall use the Federal Highway Administration (FHWA) Standard Highway Alphabets (B, C, D, E, Emod or F). White legends shall use the Clearview Alphabet.
- Lateral spacing between letters and numerals shall conform with the SHSD, and any approved changes thereto. Lateral spacing of legends shall provide a balanced appearance when spacing is not shown.
- White legends shall be cut-out white sheeting applied to green background sheeting. Black legends shall be applied by screening process, cut-out acrylic non-reflective film or combination thereof.
- Sign substrate shall be any material that meets the Department Material Specification requirements for permanent sign substrates.
- Mounting and electrical details are shown in the "SMD" and "ED" series Standard Plan Sheets.
- Transition "L" shall use merging taper length for additional safety.
- When Inspection Station is closed, channelizing devices and work vehicles shall be removed, W3-1 sign shall be covered, folded down or turned, Stop Sign shall be turned, covered or moved away and flashing beacons shall be turned off.
- Any modifications to this sheet shall be approved by TxDOT prior to application.
- If the pavement surface will allow, a minimum of two independent sets of transverse rumble strips (raised) shall be installed at least 1 mile in advance of the stop condition for "permanent" Border Patrol Checkpoint locations. Exact placement of transverse rumble strips will be determined by TxDOT. Transverse rumble strip details are shown in the "RS" Series Standard Plan Sheets.
- The legend on the Radar Speed Display sign shall be black letters and border on a yellow background and provided by Border Patrol.
- Solar power flashing beacon details are shown in the "SPRFBA" series Standard Plan Sheets.
- Request for canopies at the border patrol inspection stations should be submitted to the TxDOT District office.

POSTED SPEED (MPH)	ADVISORY SPEED (MPH)	
	W13-8T* W13-1P*	W13-8T** W13-1P**
70, 75	55	45
65	50	40
60	45	35
55	40	30

LEGEND	
	Sign
	Flashing Beacon
	Plastic Drum or 42" Cone in accordance with the TxDOT Compliant Work Zone Traffic Control Device List.
	Truck Mounted Attenuator (TMA)
	Heavy Work Vehicle with flashing arrow panel and with amber high intensity rotating, flashing, oscillating, or strobe lights

DEPARTMENTAL MATERIAL SPECIFICATIONS	
ALUMINUM SIGN BLANKS	DMS-7110
SIGN FACE MATERIALS	DMS-8300
FIBERGLASS SIGN SUBSTRATE	DMS-8305
FLASHING BEACON SIGNAL HEAD	DMS-11120
TWELVE-INCH LED TRAFFIC SIGNAL LAMP UNIT	DMS-11121

SHEETING REQUIREMENTS		
USAGE	COLOR	SIGN FACE MATERIAL
BACKGROUND (W-SERIES)	FLR. YELLOW	TYPE B <sub>FL</sub> OR C <sub>FL</sub> SHEETING
BACKGROUND (R13-2T & R13-3T)	WHITE	TYPE A SHEETING
BACKGROUND (R1-1)	RED	TYPE B OR C SHEETING
BACKGROUND (D-SERIES)	GREEN	TYPE B OR C SHEETING
LEGEND & BORDERS (W-SERIES)	BLACK	ACRYLIC NON-REFLECTIVE FILM
LEGEND & BORDERS (R13-2T & R13-3T)	BLACK	ACRYLIC NON-REFLECTIVE FILM
LEGEND & BORDER (R1-1)	WHITE	TYPE B OR C SHEETING
LEGEND & BORDERS (D-SERIES)	WHITE	TYPE D SHEETING

*Texas Department of Transportation*

**U. S. BORDER PATROL INSPECTION STATION SIGNING ON 2-LANE CONV. HWYS. ISSC-20**

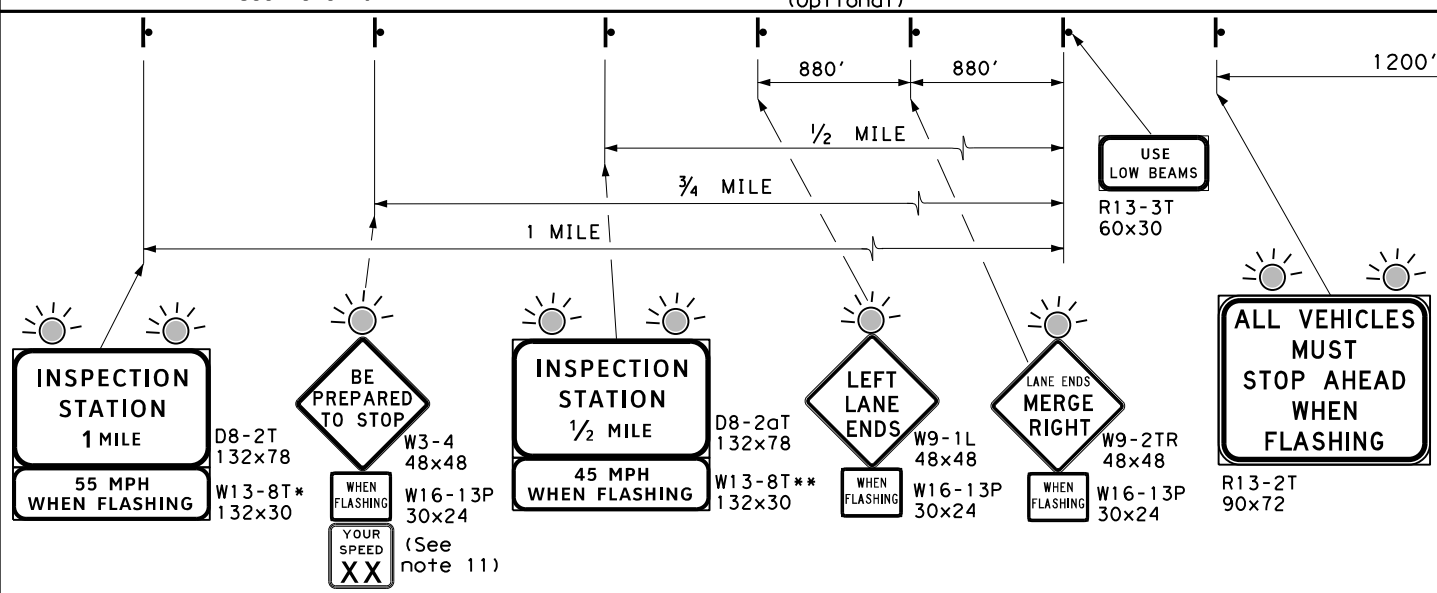
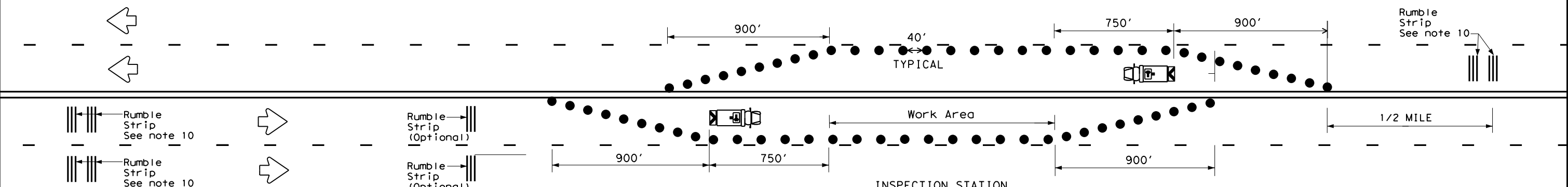
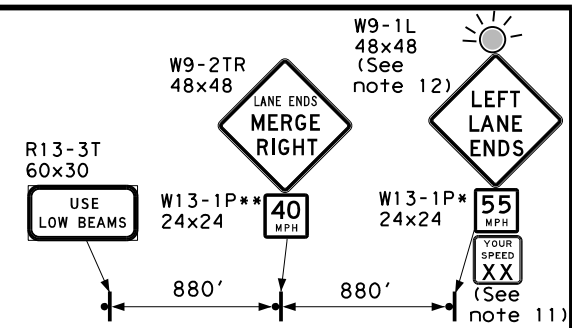
*Traffic Safety Division Standard*

FILE: issc-20.dgn	DW: TxDOT	CK: TxDOT	DW: TxDOT	CK: TxDOT
© TxDOT February 2006	CONT	SECT	JOB	HIGHWAY
REVISIONS				
2-10				
11-20				
	DIST	COUNTY	SHEET NO.	

DATE:  
FILE:

DISCLAIMER: The use of this standard is governed by the "Texas Engineering Practice Act". No warranty of any kind is made by TxDOT for any purpose whatsoever. TxDOT assumes no responsibility for the conversion of this standard to other formats or for incorrect results or damages resulting from its use.

# U.S. BORDER PATROL INSPECTION STATION SIGNING ON 4-LANE UNDIVIDED HIGHWAYS



## GENERAL NOTES

- Signs to be furnished, should be as detailed elsewhere in the plans and/or as shown on sign tabulation sheet. Standard sign designs and arrow dimensions can be found in the "Standard Highway Sign Designs for Texas" (SHSD).
- Black legends shall use the Federal Highway Administration (FHWA) Standard Highway Alphabets (B, C, D, E, Emod or F). White legends shall use the Clearview Alphabet.
- Lateral spacing between letters and numerals shall conform with the SHSD, and any approved changes thereto. Lateral spacing of legends shall provide a balanced appearance when spacing is not shown.
- White legends shall be cut-out white sheeting applied to green background sheeting. Black legends shall be applied by screening process, cut-out acrylic non-reflective film or combination thereof.
- Sign substrate shall be any material that meets the Department Material Specification requirements for permanent sign substrates.
- Mounting and electrical details are shown in the "SMD" and "ED" series Standard Plan Sheets.
- Transition "L" shall use merging taper length for additional safety.
- When Inspection Station is closed, channelizing devices and work vehicles shall be removed, W9-1L and W9-2TR signs (in opposite direction of checkpoint shall be folded down or turned, Stop Sign shall be turned, covered or moved away and flashing beacons shall be turned off.
- Any modifications to this sheet shall be approved by TxDOT prior to application.
- Rumble strips (raised) shall be installed at least 1 mile in advance of the stop condition for "permanent" Border Patrol Checkpoint locations. Exact placement of transverse rumble strips will be determined by TxDOT. Transverse rumble strip details are shown in the "RS" Series Standard Plan Sheets.
- The legend on the Radar Speed Display sign shall be black letters and border on a yellow background and provided by Border Patrol.
- Solar power flashing beacon details are shown in the "SPRFBA" series Standard Plan Sheets.
- Request for canopies at the border patrol inspection stations should be submitted to the TxDOT District office.

POSTED SPEED (MPH)	ADVISORY SPEED (MPH)	
	W13-8T* W13-1P*	W13-8T** W13-1P**
70, 75	55	45
65	50	40
60	45	35
55	40	30

LEGEND	
	Sign
	Flashing Beacon
	Plastic Drum or 42" Cone in accordance with the TxDOT Compliant Work Zone Traffic Control Device List.
	Truck Mounted Attenuator (TMA)
	Heavy Work Vehicle with flashing arrow panel and with amber high intensity rotating, flashing, oscillating, or strobe lights

DEPARTMENTAL MATERIAL SPECIFICATIONS	
ALUMINUM SIGN BLANKS	DMS-7110
SIGN FACE MATERIALS	DMS-8300
FIBERGLASS SIGN SUBSTRATE	DMS-8305
FLASHING BEACON SIGNAL HEAD	DMS-11120
TWELVE-INCH LED TRAFFIC SIGNAL LAMP UNIT	DMS-11121

SHEETING REQUIREMENTS		
USAGE	COLOR	SIGN FACE MATERIAL
BACKGROUND (W-SERIES)	FLR. YELLOW	TYPE B <sub>FL</sub> OR C <sub>FL</sub> SHEETING
BACKGROUND (R13-2T & R13-3T)	WHITE	TYPE A SHEETING
BACKGROUND (R1-1)	RED	TYPE B OR C SHEETING
BACKGROUND (D-SERIES)	GREEN	TYPE B OR C SHEETING
LEGEND & BORDERS (W-SERIES)	BLACK	ACRYLIC NON-REFLECTIVE FILM
LEGEND & BORDERS (R13-2T & R13-3T)	BLACK	ACRYLIC NON-REFLECTIVE FILM
LEGEND & BORDER (R1-1)	WHITE	TYPE B OR C SHEETING
LEGEND & BORDERS (D-SERIES)	WHITE	TYPE D SHEETING

**Texas Department of Transportation** Traffic Safety Division Standard

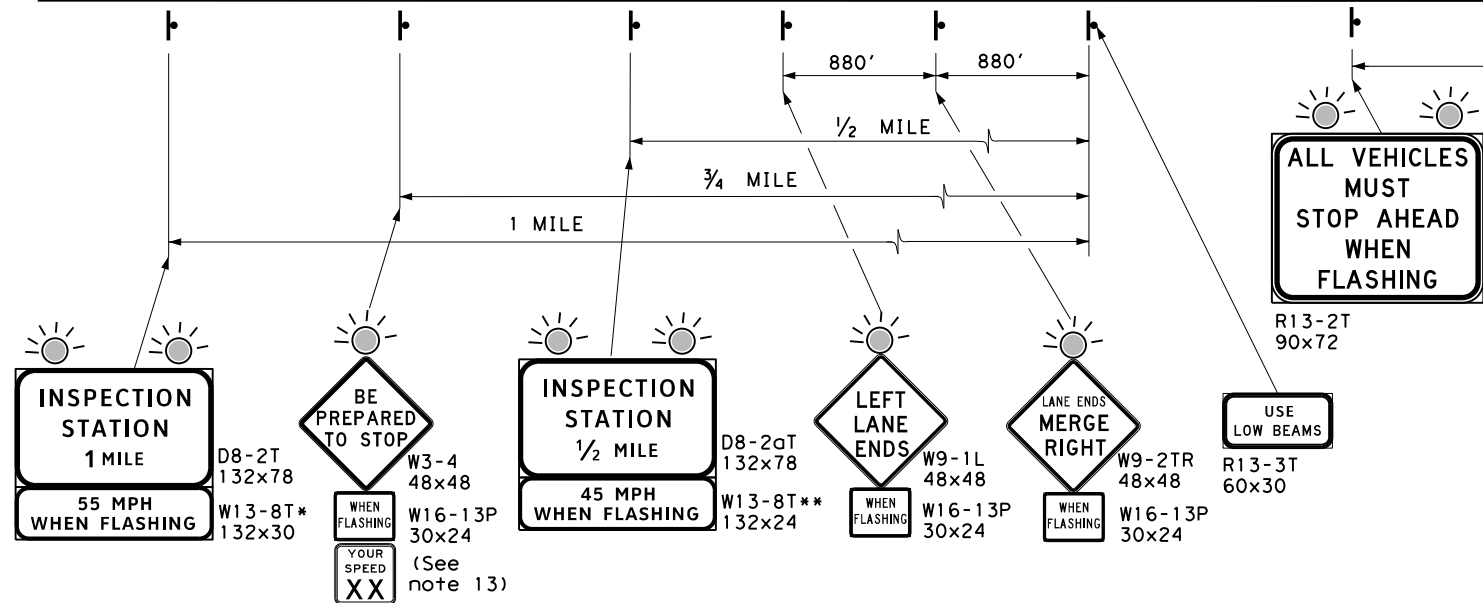
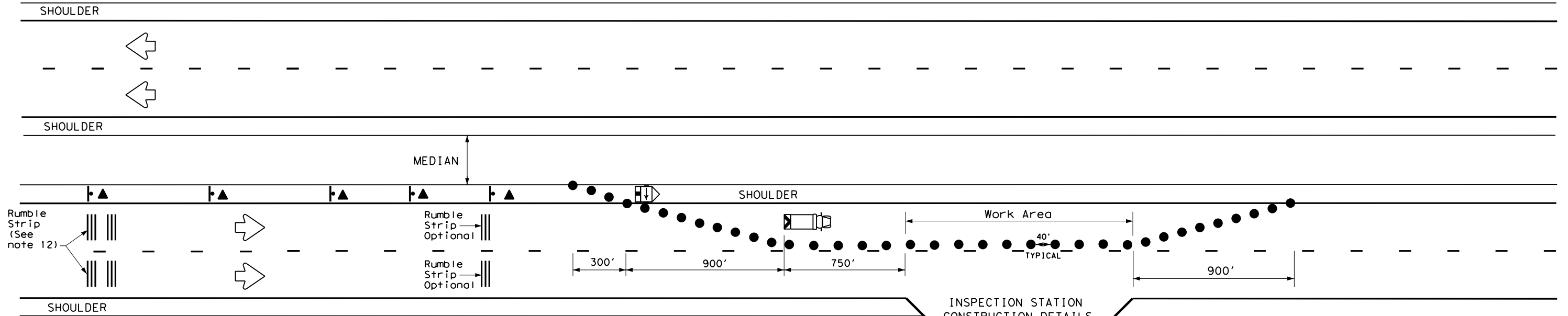
## U.S. BORDER PATROL INSPECTION STATION SIGNING ON 4-LANE UNDIVIDED HWYS. ISSU-20

FILE: issu-20.dgn	DW: TxDOT	CK: TxDOT	DW: TxDOT	CK: TxDOT
© TxDOT February 2006	CONT	SECT	JOB	HIGHWAY
REVISIONS				
2-10	DIST	COUNTY	SHEET NO.	
11-20				

DATE:  
FILE:

# U. S. BORDER PATROL INSPECTION STATION SIGNING ON DIVIDED HIGHWAYS

DISCLAIMER: The use of this standard is governed by the "Texas Engineering Practice Act". No warranty of any kind is made by TxDOT for any purpose whatsoever. TxDOT assumes no responsibility for the conversion of this standard to other formats or for incorrect results or damages resulting from its use.



### GENERAL NOTES

- Signs to be furnished, should be as detailed elsewhere in the plans and/or as shown on sign tabulation sheet. Standard sign designs and arrow dimensions can be found in the "Standard Highway Sign Designs for Texas" (SHSD).
- Black legends shall use the Federal Highway Administration (FHWA) Standard Highway Alphabets (B, C, D, E, Emod or F). White legends shall use the Clearview Alphabet.
- Lateral spacing between letters and numerals shall conform with the SHSD, and any approved changes thereto. Lateral spacing of legends shall provide a balanced appearance when spacing is not shown.
- White legends shall be cut-out white sheeting applied to green background sheeting. Black legends shall be applied by screening process, cut-out acrylic non-reflective film or combination thereof.
- Sign substrate shall be any material that meets the Department Material Specification requirements for permanent sign substrates.
- Mounting and electrical details are shown in the "SMD" and "ED" series Standard Plan Sheets.
- Transition "L" shall use merging taper length for additional safety.
- When Inspection Station is closed, channelizing devices and work vehicles shall be removed, Stop Sign shall be turned, covered or moved away and flashing beacons shall be turned off.
- Any modifications to this sheet shall be approved by TxDOT prior to application.
- Duplicate signs shall be erected on the median side of freeways, where median width will permit and traffic volume justifies the signing.
- Multilane closures shall be coordinated with TxDOT District Office before application.
- If the pavement surface will allow, a minimum of two independent sets of transverse rumble strips (raised) shall be installed at least 1 mile in advance of the stop condition for "permanent" Border Patrol Checkpoint locations. Exact placement of transverse rumble strips will be determined by TxDOT. Transverse rumble strip details are shown in the "RS" Series Standard Plan Sheets.
- The legend on the Radar Speed Display sign shall be black letters and border on a yellow background and provided by Border Patrol.
- Request for canopies at the border patrol inspection stations should be submitted to the TxDOT District office.

LEGEND	
	Sign
	Duplicate Signs on the median side
	Flashing Beacon
	Trailer Mounted Flashing Arrow Panel
	Plastic Drum or 42" Cone in accordance with the TxDOT Compliant Work Zone Traffic Control Device List
	Truck Mounted Attenuator (TMA)
	Heavy Work Vehicle with amber high intensity rotating, flashing, oscillating, or strobe lights

DEPARTMENTAL MATERIAL SPECIFICATIONS	
ALUMINUM SIGN BLANKS	DMS-7110
SIGN FACE MATERIALS	DMS-8300
FIBERGLASS SIGN SUBSTRATE	DMS-8305
FLASHING BEACON SIGNAL HEAD	DMS-11120
TWELVE-INCH LED TRAFFIC SIGNAL LAMP UNIT	DMS-11121

SHEETING REQUIREMENTS		
USAGE	COLOR	SIGN FACE MATERIAL
BACKGROUND (W-SERIES)	FLR. YELLOW	TYPE B <sub>FL</sub> OR C <sub>FL</sub> SHEETING
BACKGROUND (R13-2T & R13-3T)	WHITE	TYPE A SHEETING
BACKGROUND (R1-1)	RED	TYPE B OR C SHEETING
BACKGROUND (D-SERIES)	GREEN	TYPE B OR C SHEETING
LEGEND & BORDERS (W-SERIES)	BLACK	ACRYLIC NON-REFLECTIVE FILM
LEGEND & BORDERS (R13-2T & R13-3T)	BLACK	ACRYLIC NON-REFLECTIVE FILM
LEGEND & BORDER (R1-1)	WHITE	TYPE B OR C SHEETING
LEGEND & BORDERS (D-SERIES)	WHITE	TYPE D SHEETING

POSTED SPEED (MPH)	ADVISORY SPEED (MPH)	
	W13-8T*	W13-8T**
70, 75	55	45
65	50	40
60	45	35
55	40	30



## U. S. BORDER PATROL INSPECTION STATION SIGNING ON DIVIDED HIGHWAYS

### ISSD-20

FILE: issd-20.dgn	DN: TxDOT	CK: TxDOT	DW: TxDOT	CK: TxDOT
©TxDOT February 2006	CONT	SECT	JOB	HIGHWAY
REVISIONS				
2-10	DIST	COUNTY	SHEET NO.	
11-20				

DATE:  
FILE: