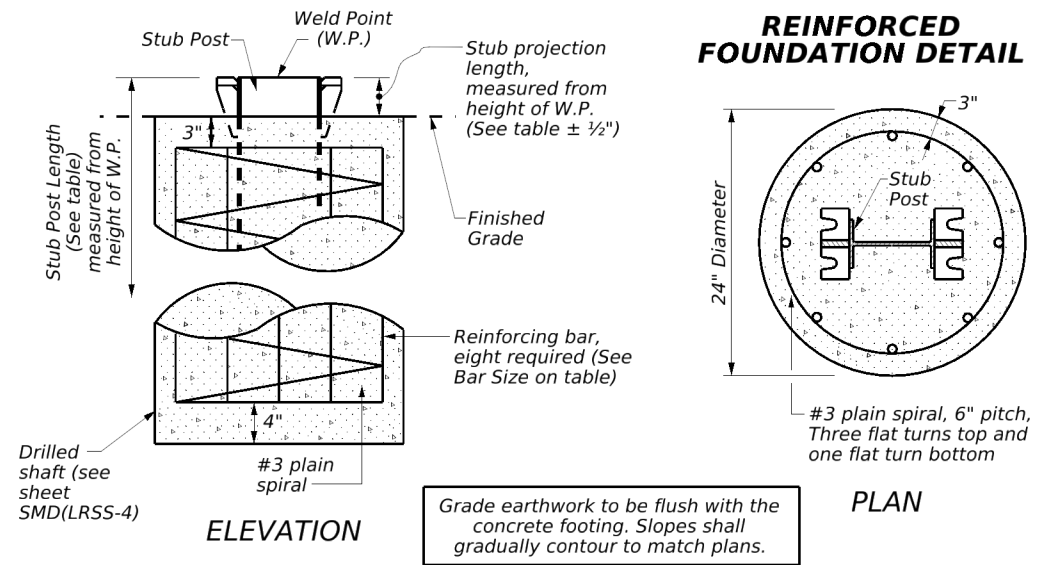


DISCLAIMER: The use of this standard is governed by the "Texas Engineering Practice Act". No warranty of any kind is made by TxDOT for any purpose whatsoever. TxDOT assumes no responsibility for the conversion of this standard to other formats or for incorrect results or damages resulting from its use.

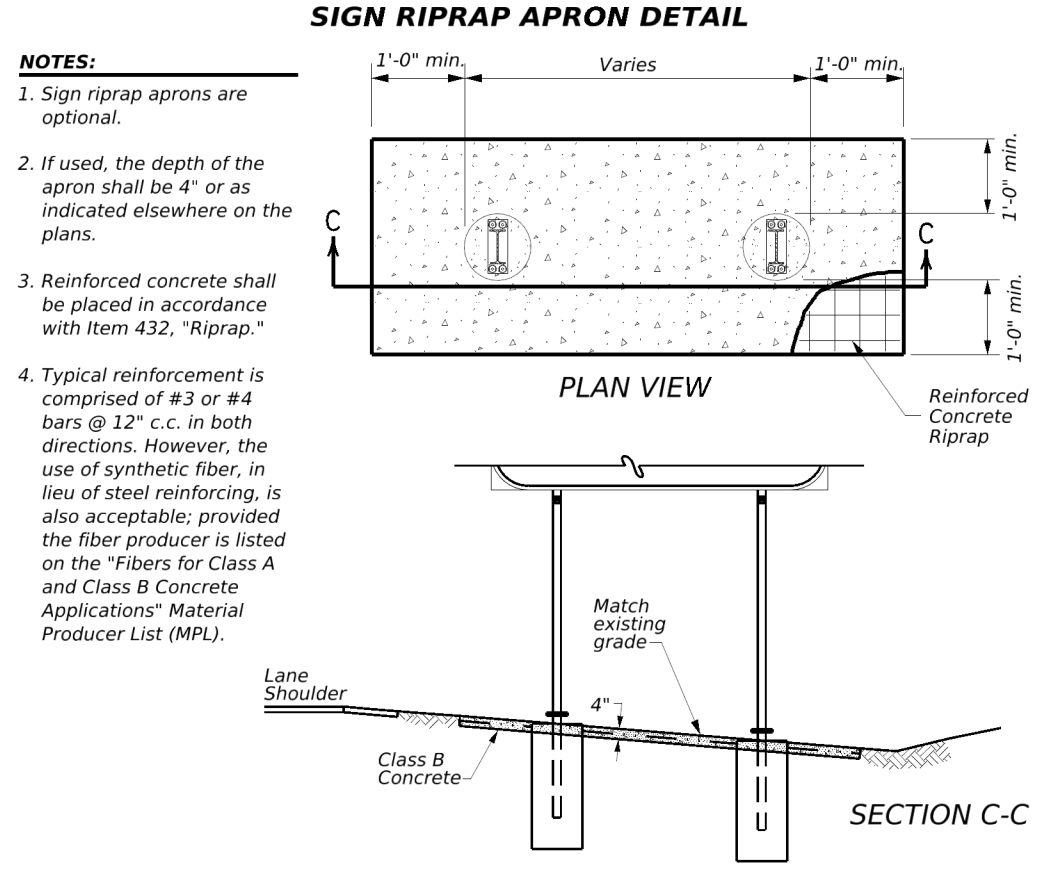
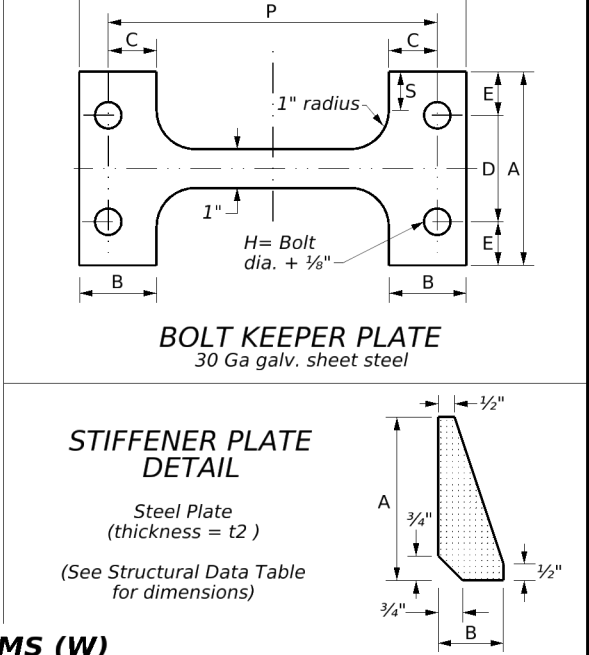
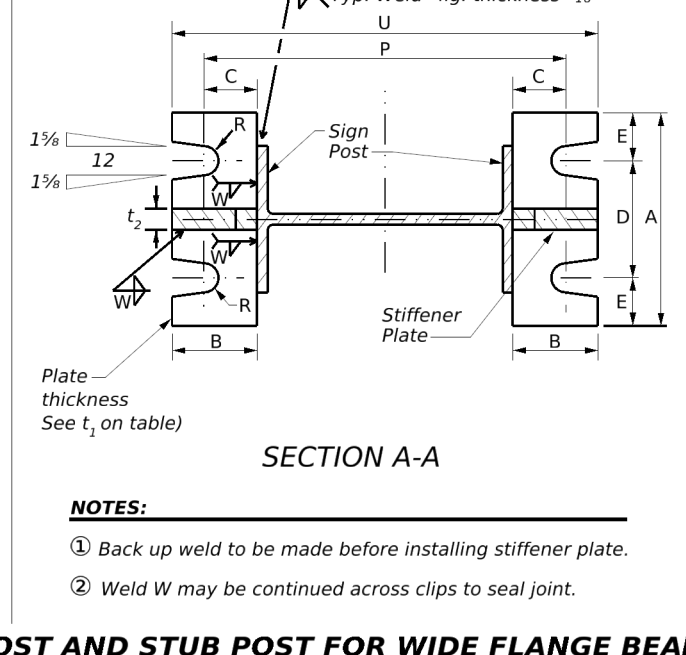
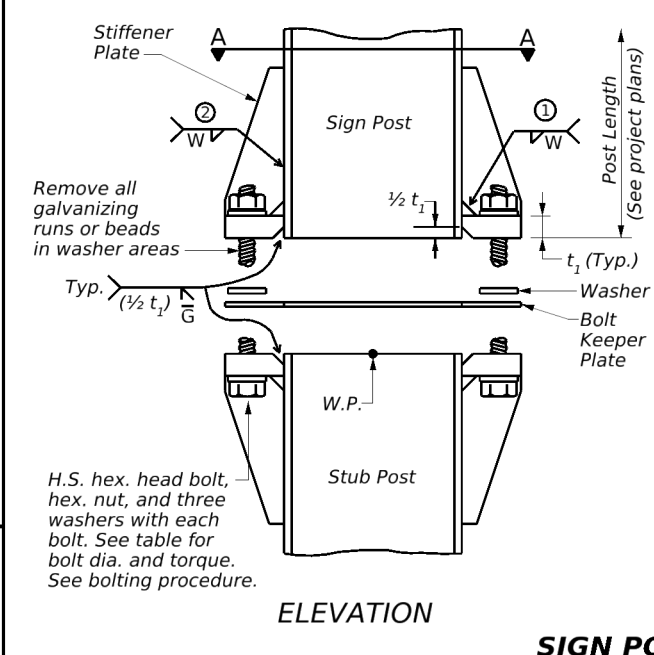
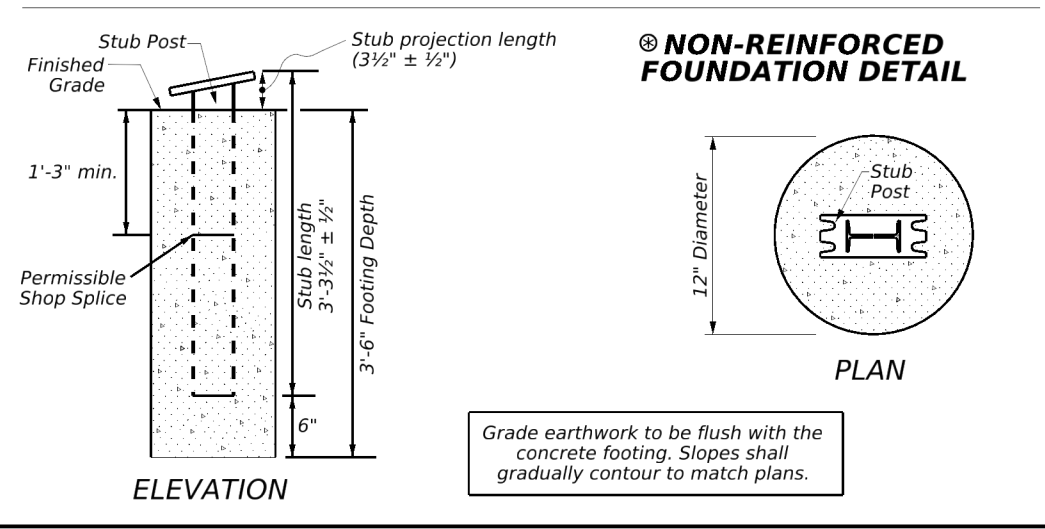


BOLTING PROCEDURE FOR ASSEMBLY OF BASE CONNECTION

1. Assemble sign post, BOLT KEEPER PLATE and stub post with bolts and three flat washers per bolt, as shown.
2. Shim as required, to plumb post.
3. Tighten all bolts to the maximum possible with a 12 to 15 inch wrench to clean bolt threads and to bed washers and shims.
4. Loosen each bolt in sequence and retighten bolts in a systematic order, to the prescribed torque. Do not overtighten.
5. To prevent nut loosening, burr threads of bolt at junction with nut using a center punch.

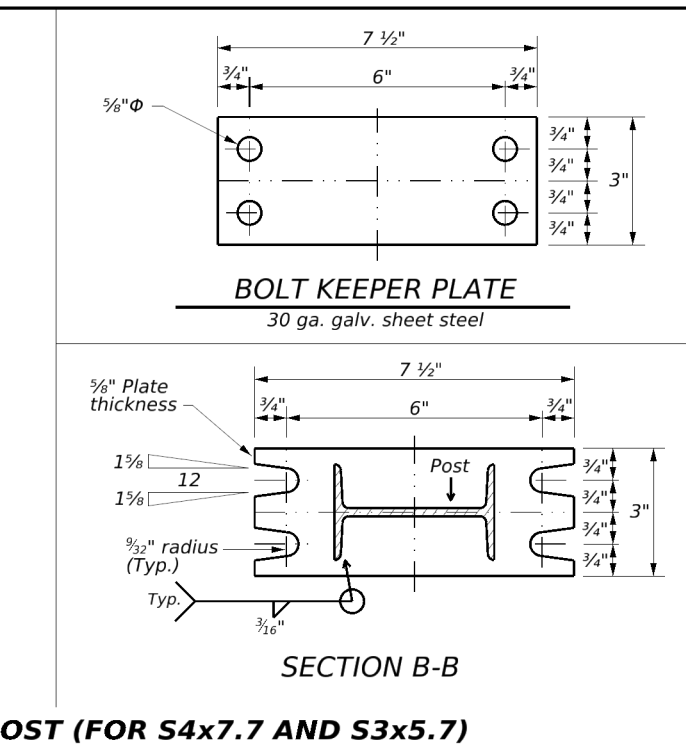
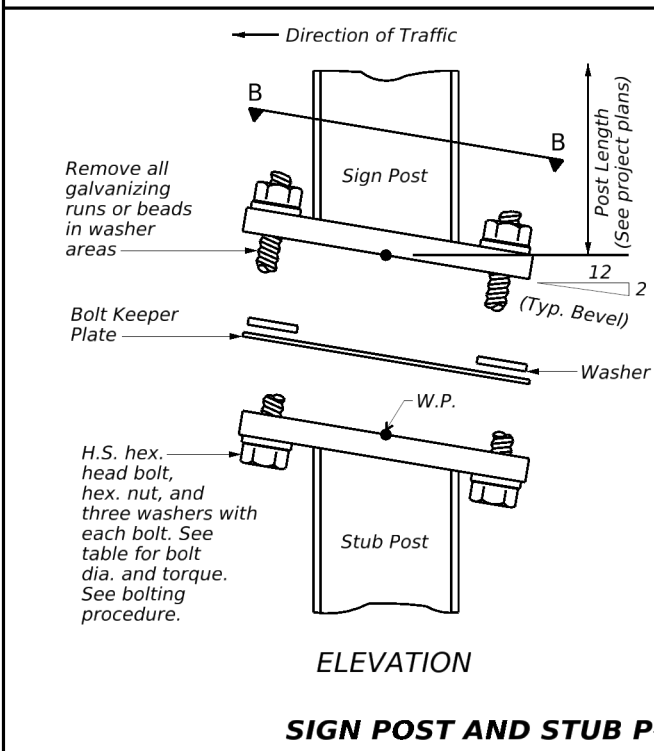


STRUCTURAL DATA TABLE																			
DIMENSIONS	BASE CONNECTION										BOLT KEEPER PLATE			FOUNDATION					
	Post Size	Bolt Size & Torque	A	B	C	D	E	t ₁	t ₂	W	R	P	S	U	Stub length	Stub projection	Drill Shaft diameter	Bar Size	Concrete Type
W12x26	3/4" Φ x 3 1/2"											15"		16 3/4"	3'-0"	2 1/2"	24"	#11	C
W10x22	7/8-750 inch pounds 62-63 foot pounds	6"	2 1/4"	1 3/8"	3 1/2"	1 1/4"	1"	3/4"	5/16"	1 3/32"		12 7/8"	1 1/2"	14 5/8"	3'-0"	2 1/2"		#9	
W8x21												11"		12 3/4"	3'-0"	2 1/2"		#8	
W8x18	5/8" Φ x 2 3/4"											10 5/8"		12 1/8"	2'-6"	3"	#7		
W6x15	4/8-450 inch pounds 36-38 foot pounds	5"	2"	1 1/4"	2 3/4"	1 1/8"	3/4"	1/2"	1/4"	1 1/32"		8 1/2"	1"	10"	2'-6"	3"	#6		
W6x9												8 3/8"		9 5/8"	2'-0"	3"	#5		
S4x7.7	1/2" Φ x 2 3/4"	See Sign Post Stub (S4x7.7 and S3x5.7)										See Sign Post Stub (S4x7.7 and S3x5.7)			3'-3 1/2"	3 1/2"	12"	Non-reinforced	A
S3x5.7	4/8-450 inch pounds 36-38 foot pounds																		



NOTES:

1. Sign riprap aprons are optional.
2. If used, the depth of the apron shall be 4" or as indicated elsewhere on the plans.
3. Reinforced concrete shall be placed in accordance with Item 432, "Riprap."
4. Typical reinforcement is comprised of #3 or #4 bars @ 12" c.c. in both directions. However, the use of synthetic fiber, in lieu of steel reinforcing, is also acceptable; provided the fiber producer is listed on the "Fibers for Class A and Class B Concrete Applications" Material Producer List (MPL).



Texas Department of Transportation Traffic Safety Division Standard
SIGN MOUNTING DETAILS
LARGE ROADSIDE SIGNS
FOUNDATION & STUB
SMD(2-1)-24

FILE: smd(2-1)-24.dgn DW: TxDOT CK: TxDOT DW: TxDOT CK: TxDOT
 © TxDOT May 2024 CONT SECT JOB HIGHWAY
 REVISIONS
 8-95 5-24
 4-98
 9-08
 DIST COUNTY SHEET NO.

DATE: FILE: