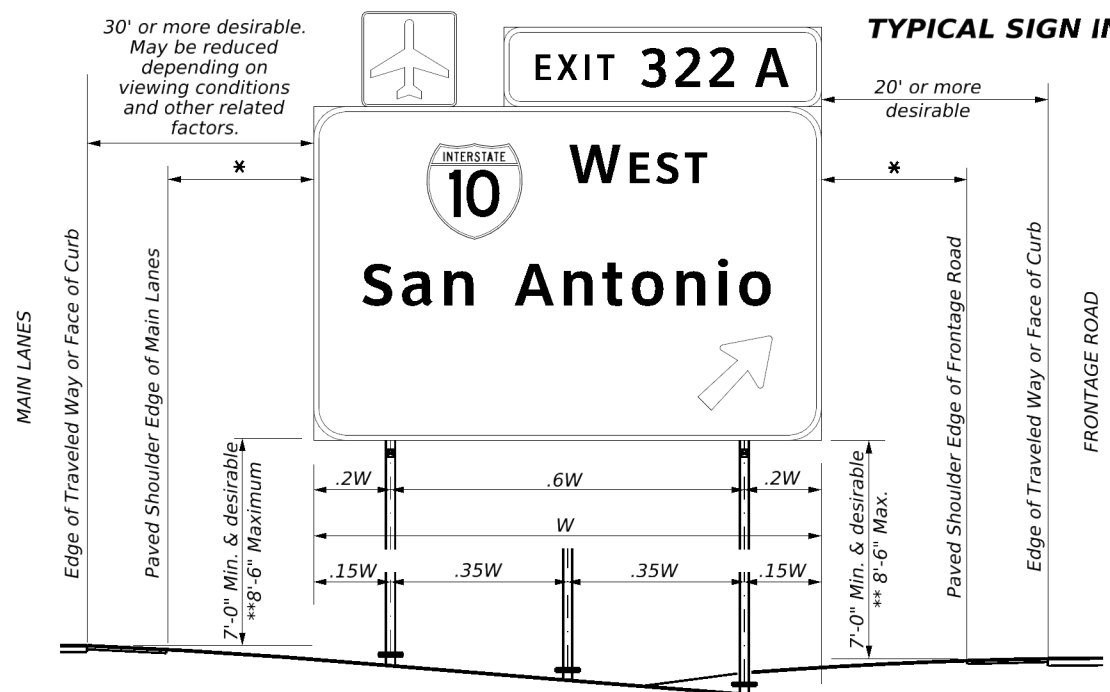


DISCLAIMER: The use of this standard is governed by the "Texas Engineering Practice Act". No warranty of any kind is made by TxDOT for any purpose whatsoever. TxDOT assumes no responsibility for the conversion of this standard to other formats or for incorrect results or damages resulting from its use.



LATERAL CLEARANCE NOTES:

1. Lateral clearances of signs mounted on the median side of the main lanes are the same as shown, where space will permit. Where a sign is to be located behind guardrail, an allowable minimum clearance of 5' may be used, measured from the face of the guardrail to the near edge of sign.
2. * 6' minimum and desirable may be used only in areas of limited lateral clearance and when approved by the Engineer.

POST SPACING NOTES:

1. Post spacing on a two post sign may be varied a maximum of ±10% of the total sign width to fit field conditions.
2. Post spacing on a three post sign may be varied a maximum of ±5% of the total sign width to fit field conditions.

SIGN HEIGHT NOTES:

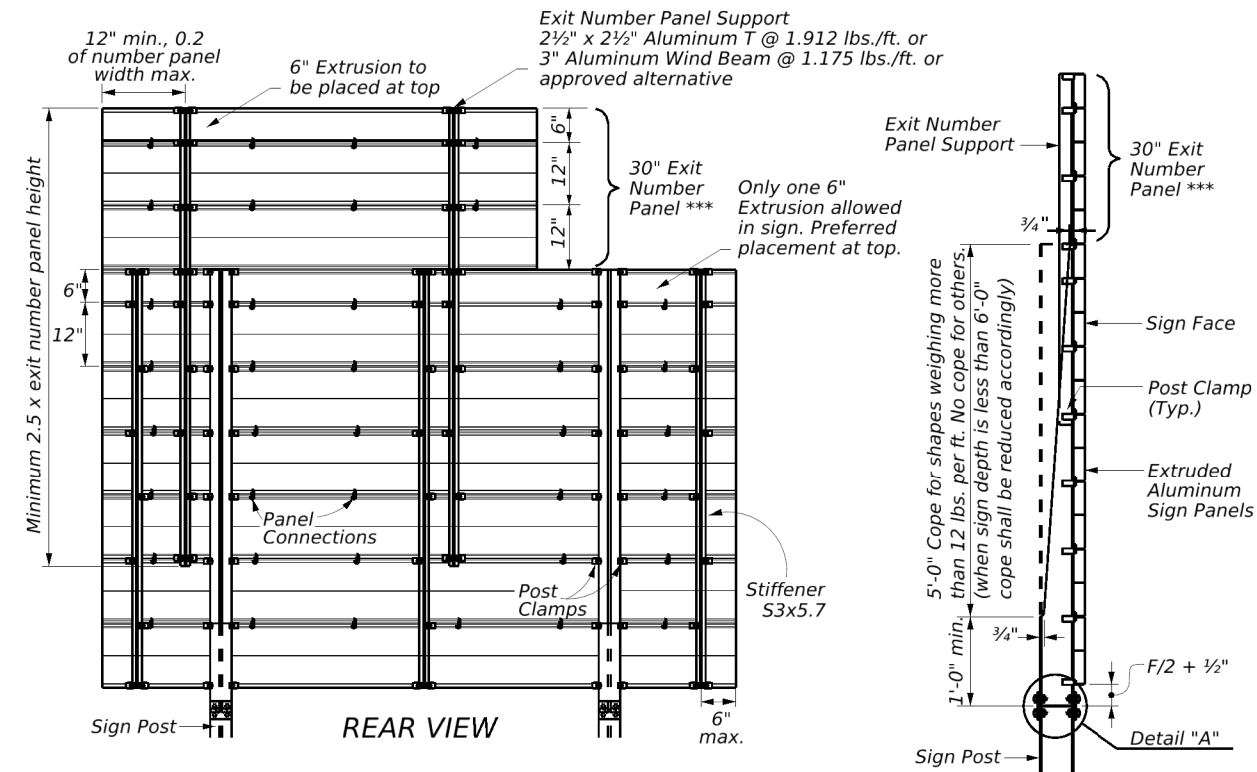
1. ** The 8'-6" maximum may be exceeded when placing signs on extreme slopes. In these conditions, a 7' minimum from natural ground to bottom of sign must be maintained.

GENERAL NOTES:

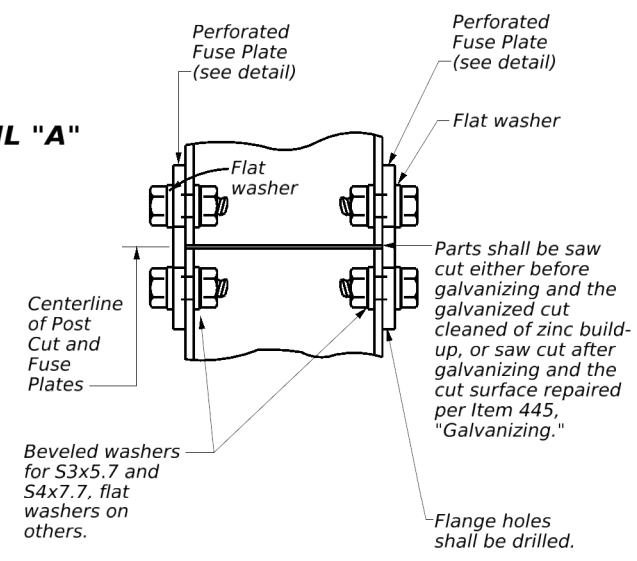
1. Exit number panel supports shall be ASTM A36 structural steel galvanized after fabrication, or ASTM B221 aluminum alloy 6061-T6 or approved alternative.
2. In accordance with DMS-7120, High-Strength (H.S.) Bolts, Nuts, and Washers shall be galvanized per ASTM Designation: B695 Class 50, or A153 Class C or D.
3. Posts, parent sign panels, and exit number panels shall comply with notes on sheets SMD(2-1) and SMD(2-3).
4. Signs (such as exit number panels) attached above a parent sign shall be made of the same type material as the parent sign. General Service and Routing sign plaques may be fabricated from flat sheet aluminum.
5. Exit number panel supports and other connection hardware required to fasten exit number panel to parent sign shall be subsidiary to "Aluminum Signs".
6. Signs to be furnished shall be detailed elsewhere in the plans. Refer to the "Typical Sign Requirements" standard for additional information.
7. *** Alternate exit number panel heights may be used, in accordance with the "Standard Highway Sign Designs for Texas (SHSD)".

DEPARTMENTAL MATERIAL SPECIFICATIONS	
ALUMINUM SIGN BLANKS	DMS-7110
SIGN HARDWARE	DMS-7120

ALUMINUM PARENT SIGN & EXIT NUMBER PANEL MOUNTING DETAILS



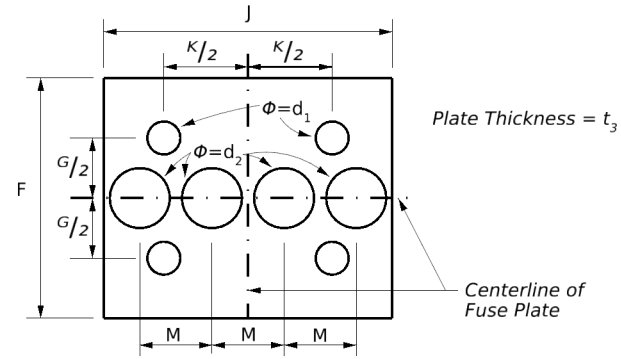
DETAIL "A"



STRUCTURAL DATA TABLE

DIMENSIONS	PERFORATED FUSE PLATE											
	Post Size	F	G	J	K	M	d ₁	d ₂	t ₃	Bolt Dia.	Wt. (ea.) (lbs.)	Bolt length
W12x26	6"	3"	6½"	3½"	1¾"	1¾"	1¾"	1¾"	1/2"	¾"	4.47	2¼"
W10x22	6"	3"	5¾"	2¾"	1¾"	1¾"	1¾"	1/2"	¾"	¾"	4.03	2¼"
W8x21	5½"	2½"	5¼"	2¾"	1¾"	1¾"	1"	1/2"	¾"	¾"	3.35	2¼"
W8x18	5"	2½"	5¼"	2¾"	1¾"	1¾"	1¾"	3/8"	¾"	¾"	2.26	2¼"
W6x15	5"	2½"	6"	3½"	1½"	1¾"	1¾"	3/8"	¾"	¾"	2.51	2¼"
W6x9	4¼"	2"	4"	2¾"	1"	1¾"	¾"	¼"	½"	½"	1.01	1½"
S4x7.7	3¾"	1½"	2¾"	1½"	¾"	¾"	¾"	¼"	½"	½"	0.60	1½"
S3x5.7												

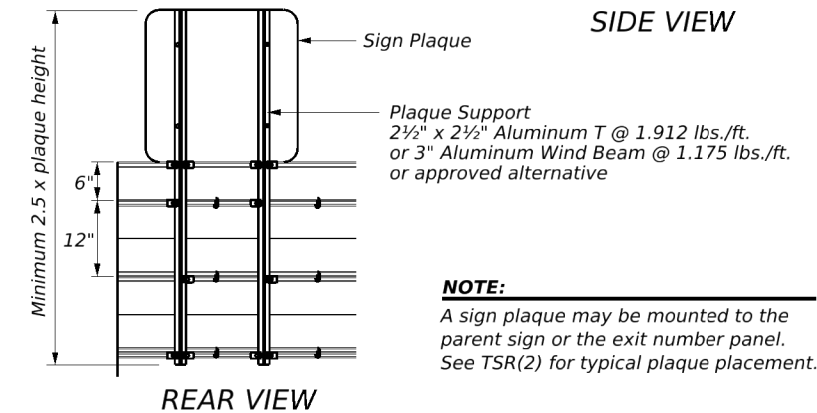
PERFORATED FUSE PLATE DETAIL



NOTE:

Use H.S. hex head bolts, hex head nut, and bevel or flat washer (where req'd) under nut. All holes shall be drilled, sub-punched, and reamed. All plate cuts shall preferably be saw cuts. However, flame cutting will be permitted, provided all edges are ground. Metal projecting beyond the plane of the plate face will not be permitted. Steel fuse plates shall conform to the requirements of ASTM A36. ASTM A572 Grade 50 or ASTM A588 may be substituted for A36 at the option of the fabricator. Mill test reports shall be submitted for Fuse Plates. Steel used shall have an ultimate tensile strength not to exceed 80 KSI. For alternative Fuse Plates, contact the Traffic Safety Division.

SIGN PLAQUE MOUNTING DETAIL



**SIGN MOUNTING DETAILS
LARGE ROADSIDE SIGNS
EXTRUDED ALUMINUM**

SMD(2-2)-24

FILE: smd(2-2)-24.dgn	DN: TxDOT	CK: TxDOT	DW: TxDOT	CK: TxDOT	
© TxDOT	May 2024	CONT	SECT	JOB	HIGHWAY
REVISIONS					
8-95					
9-08					
5-24					
DIST	COUNTY			SHEET NO.	