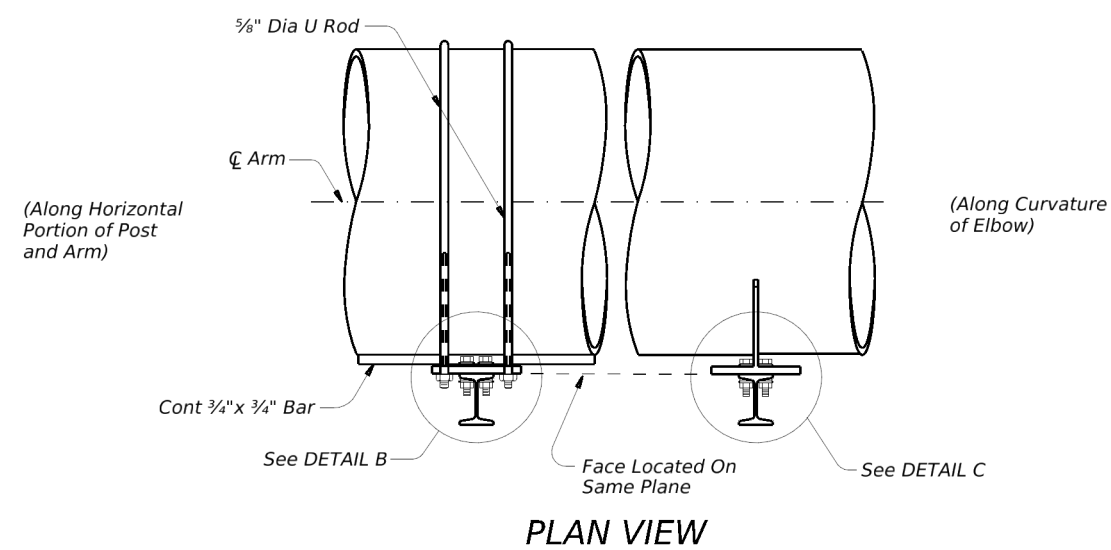
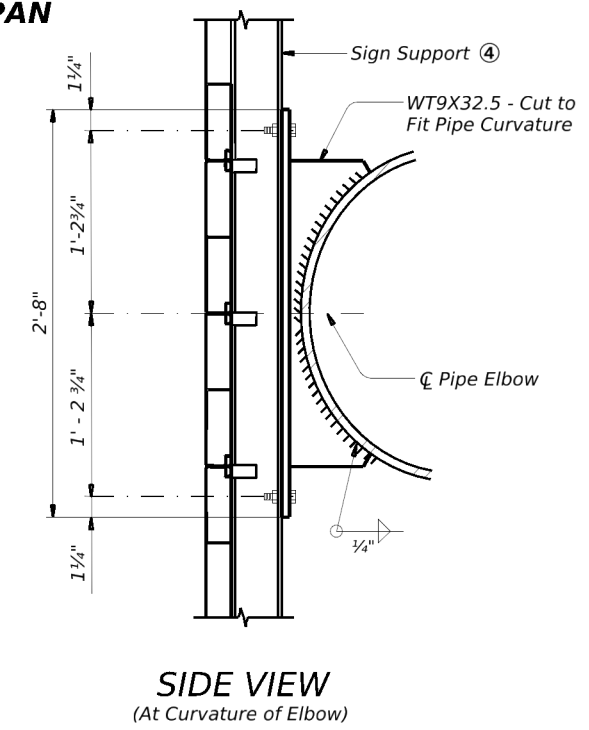
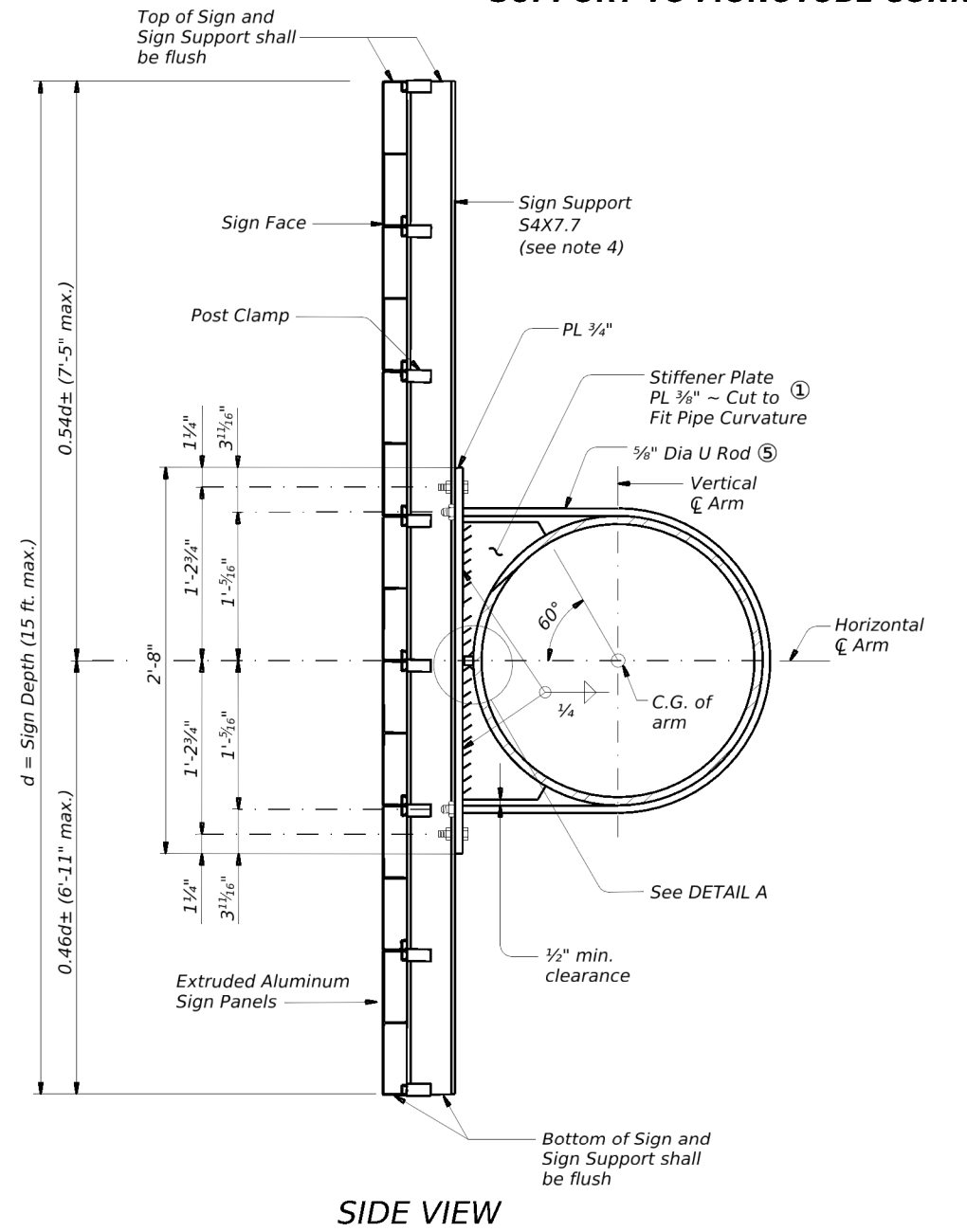
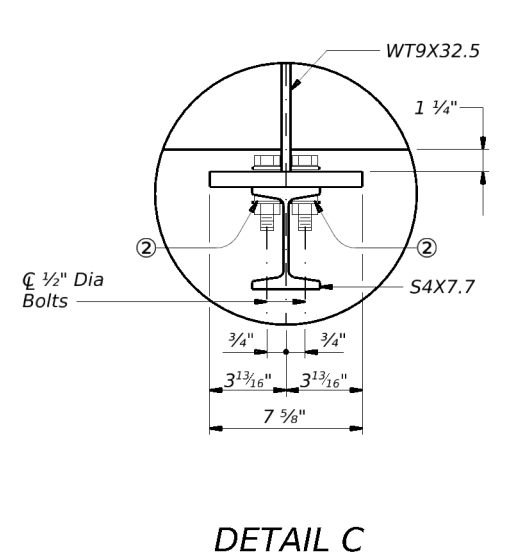
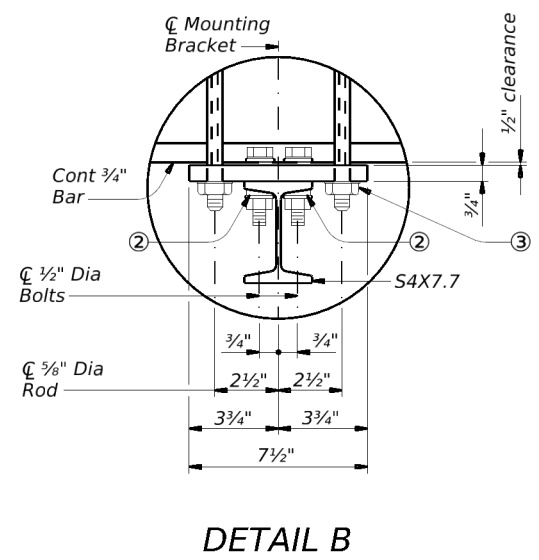
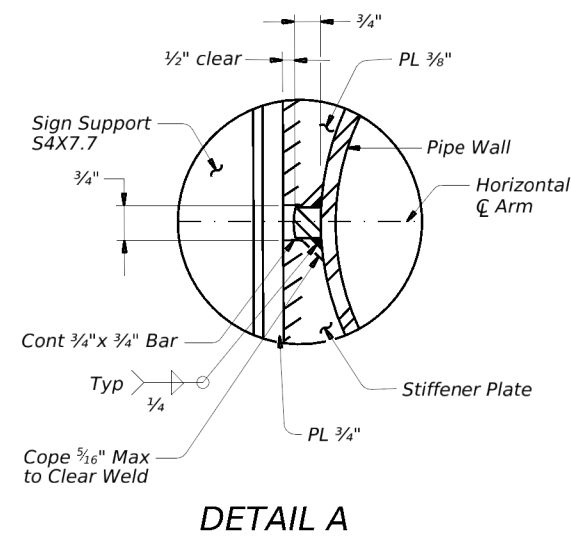
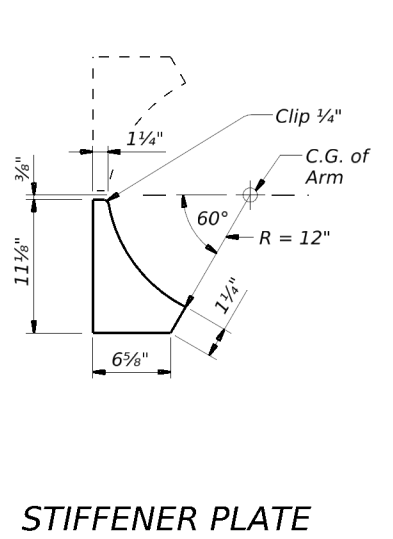
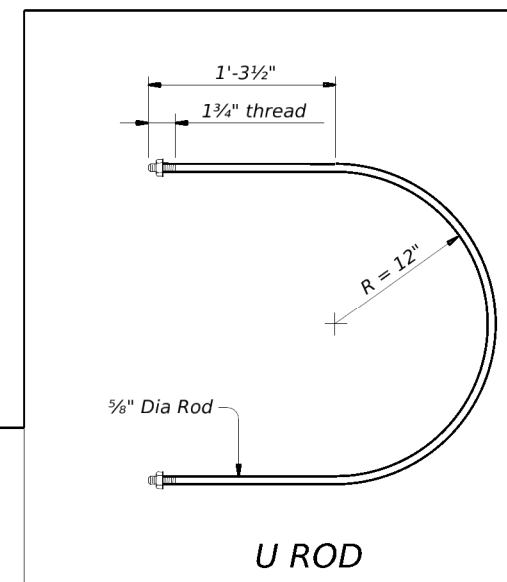


SUPPORT TO MONOTUBE CONNECTION - CANTILEVER AND SPAN

DISCLAIMER: The use of this standard is governed by the "Texas Engineering Practice Act". No warranty of any kind is made by TxDOT for any purpose whatsoever. TxDOT assumes no responsibility for the conversion of this standard to other formats or for incorrect results or damages resulting from its use.



- GENERAL NOTES:**
1. Materials, fabrication, construction, and erection shall conform to the requirements of the Departmental Material Specifications and with details, dimensions, and weld procedures shown herein. Structural steel shall conform with ASTM A36 unless noted otherwise.
 2. Bolts shall have hexagon heads and nuts and conform with ASTM A307.
 3. All parts shall be galvanized after fabrication per Item 445, "Galvanizing".
 4. Monotube Sign Supports may only be S4X7.7 with a 54%-46% split. See Table 2 on SMD(2-4) for maximum support spacing.
- NOTES:**
- ① Total of 4 ~ per assembly. See Stiffener Plate detail.
 - ② 1/2" Dia bolt with one hardened washer, one beveled washer, and one lock washer.
 - ③ 5/8" Dia prevailing torque lock nut and washer ~ Typ.
 - ④ Raise sign bracket on sign support at elbow to match others located on arm.
 - ⑤ See U Rod detail.



Texas Department of Transportation
 Traffic Safety Division Standard

SIGN MOUNTING DETAILS OVERHEAD SIGNS SUPPORT TO MONOTUBE CONNECTION SMD(2-6)-24

FILE: smd(2-6)-23.dgn	DN: TxDOT	CK: TxDOT	DW: TxDOT	CK: TxDOT
© TxDOT	May 2024	CONT	SECT	JOB
REVISIONS		HIGHWAY		
12-95	9-08	DIST	COUNTY	SHEET NO.
5-24				

27F

DATE:
FILE: