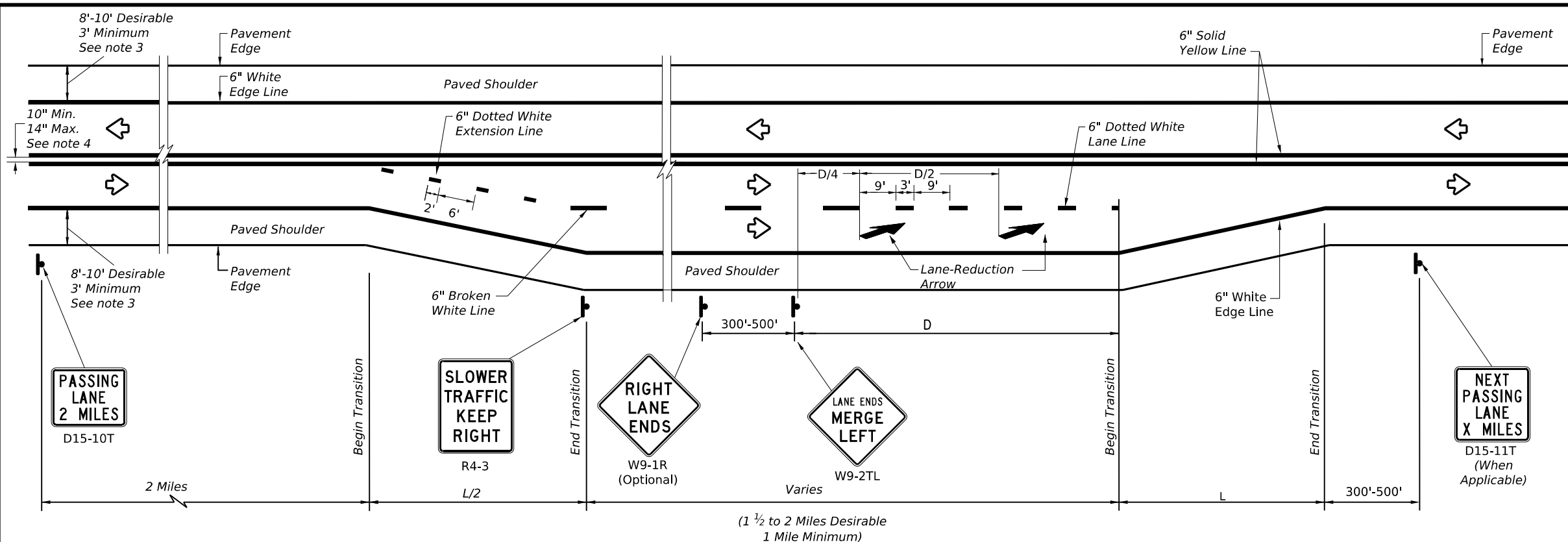
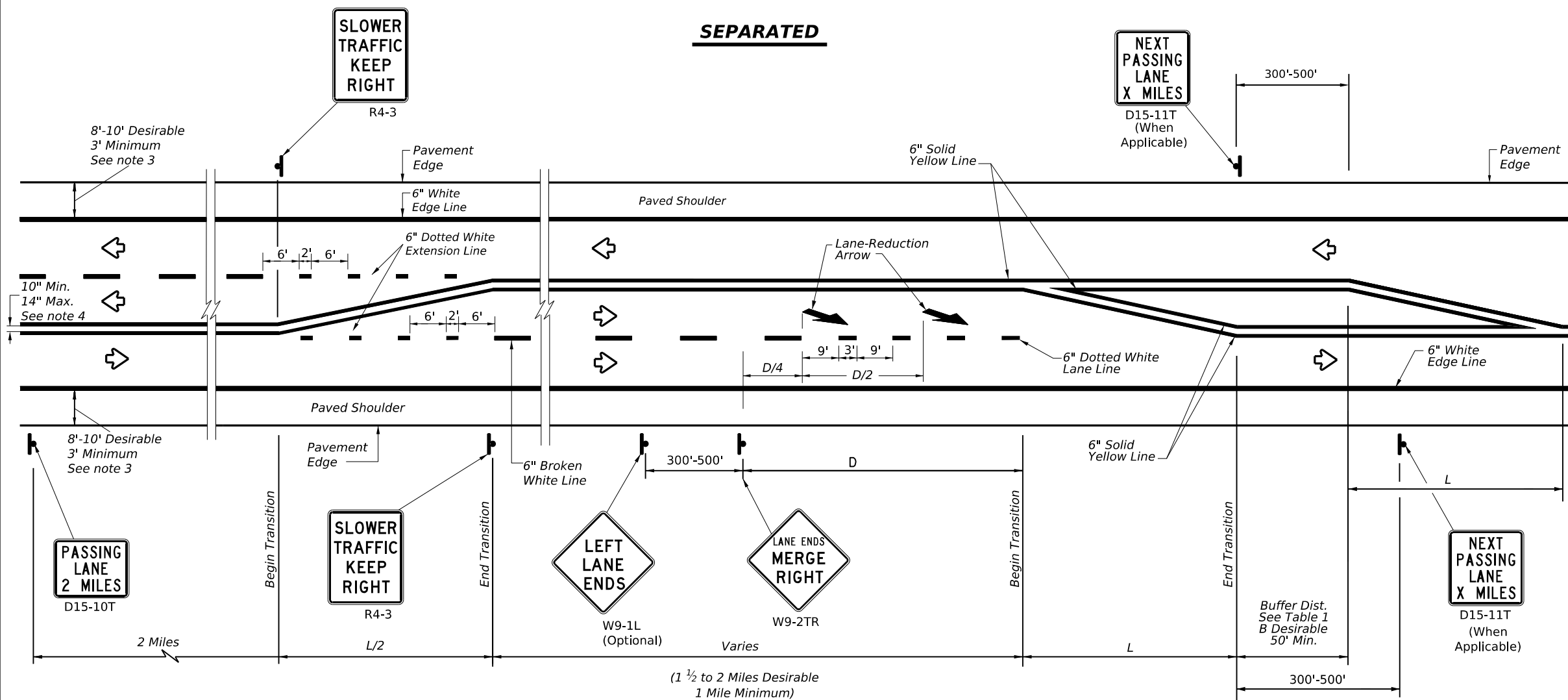


DISCLAIMER: The use of this standard is governed by the "Texas Engineering Practice Act". No warranty of any kind is made by TxDOT for any purpose whatsoever. TxDOT assumes no responsibility for the conversion of this standard to other formats or for incorrect results or damages resulting from its use.

DATE: FILE:



SEPARATED



ALTERNATING

LEGEND	
	Sign
	Traffic Flow

TYPICAL TAPER LENGTH (L)	
Formula *	$L = WS$

* Transition length should be rounded up to nearest 5 foot increment.

L=Length of Transition (FT)
W=Width of Offset (FT)
S=Posted Speed (MPH)

EXAMPLE
A 12 foot lane is added on a 70 mph roadway.
The length of the transition should be:
 $L = 12 \times 70 = 840$ ft

**TABLE 1
ADVANCE WARNING SIGN
DISTANCE (D)
AND BUFFER DISTANCE (B)**

Posted Speed	D (FT)	B (FT)
40	670	305
45	775	360
50	885	425
55	990	495
60	1100	570
65	1200	645
70	1250	730
75	1350	820

GENERAL NOTES

- For minimum and desirable design details, see the Roadway Design Manual, Chapter 4, Section 6, Super 2 Highways.
- For Raised Pavement Markers (RPM) details, see Pavement Markings Standard sheet, PM(2) - Centerline for All Two Lane Two-Way Roadways. Note that RPMs are not recommended on the 6" dotted white extension lines.
- For rumble strip options available for the designed shoulder width, see Rumble Strip Standard sheet RS(2).
- For pavement marking details, see Pavement Marking Standard sheet PM(1).



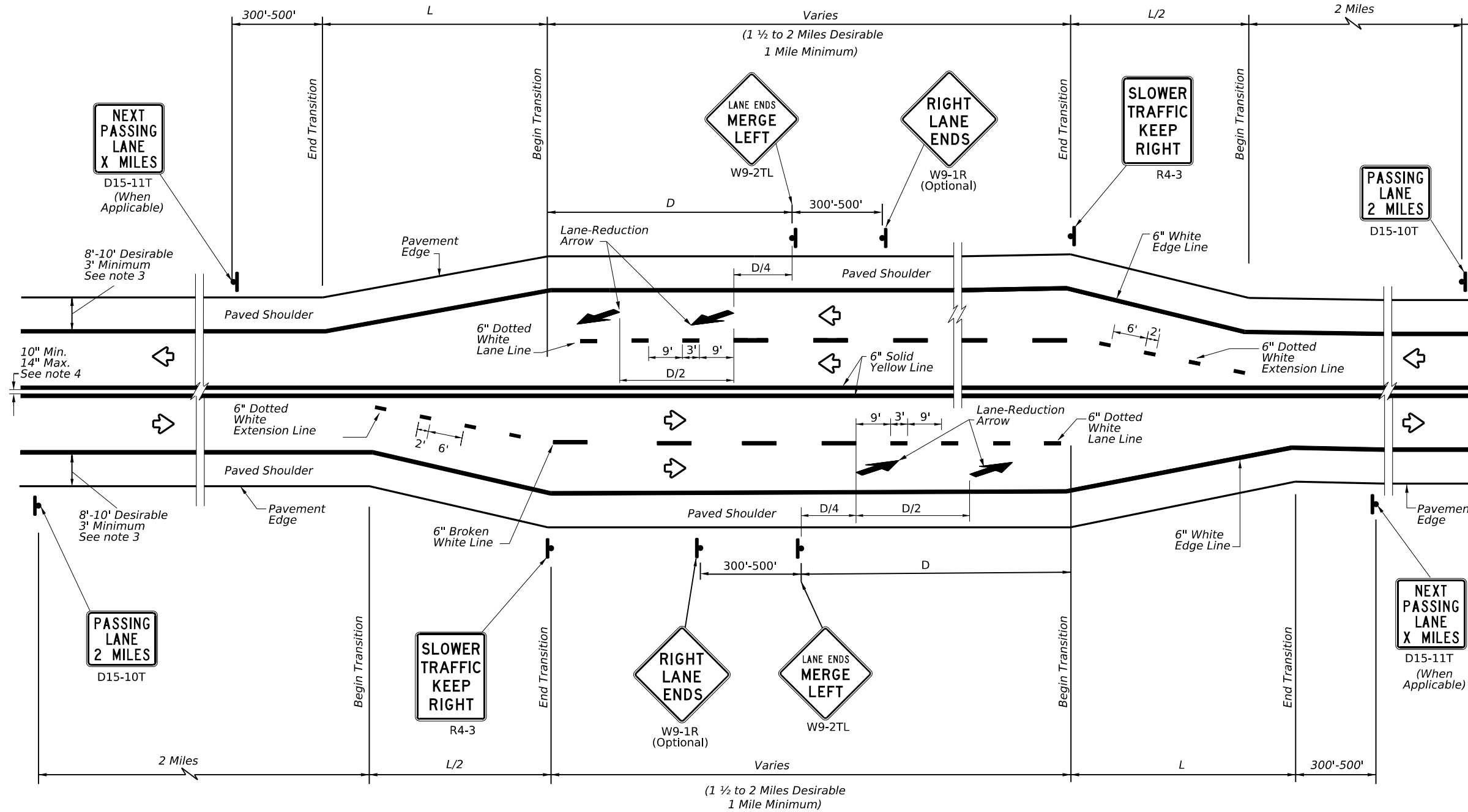
**TEXAS SUPER 2
PASSING LANES**

TS2(PL-1)-23

FILE: ts2-1-23.dgn	DN:	CK:	DW:	CK:
© TxDOT February 2023	CONT	SECT	JOB	HIGHWAY
5-10 3-18	REVISIONS		DIST	COUNTY
2-12 2-23				SHEET NO.
3-12				

DISCLAIMER: The use of this standard is governed by the "Texas Engineering Practice Act". No warranty of any kind is made by TxDOT for any purpose whatsoever. TxDOT assumes no responsibility for the conversion of this standard to other formats or for incorrect results or damages resulting from its use.

DATE:
FILE:



SIDE BY SIDE PASSING LANES

LEGEND

	Sign
	Traffic Flow

TYPICAL TAPER LENGTH (L)

Formula *	$L = WS$
-----------	----------

* Transition length should be rounded up to nearest 5 foot increment.

L=Length of Transition (FT)
W=Width of Offset (FT)
S=Posted Speed (MPH)

EXAMPLE

A 12 foot lane is added on a 70 mph roadway. The length of the transition should be:

$L = 12 \times 70 = 840$ ft

**TABLE 1
ADVANCE WARNING
SIGN DISTANCE (D)**

Posted Speed	D (FT)
40	670
45	775
50	885
55	990
60	1100
65	1200
70	1250
75	1350

GENERAL NOTES

1. For minimum and desirable design details, see the Roadway Design Manual, Chapter 4, Section 6, Super 2 Highways.
2. For Raised Pavement Markers (RPM) details, see Pavement Markings Standard sheet, PM(2) - Centerline for All Two Lane Two-Way Roadways. Note that RPMs are not recommended on the 6" dotted white extension lines.
3. For rumble strip options available for the designed shoulder width, see Rumble Strip Standard sheet RS(2).
4. For pavement marking details, see Pavement Marking Standard sheet PM(1).



Texas Department of Transportation
Traffic Safety Division Standard

**TEXAS SUPER 2
PASSING LANES**

TS2(PL-2)-23

FILE: ts2-2-23.dgn	DN:	CK:	DW:	CK:
©TxDOT February 2023	CONT	SECT	JOB	HIGHWAY
REVISIONS				
5-10 3-18				
2-12 2-23				
3-12				
	DIST	COUNTY	SHEET NO.	