

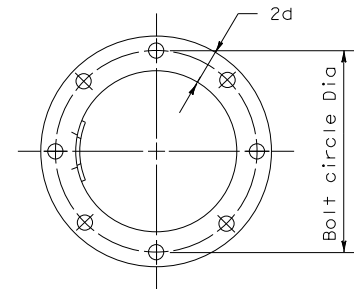
DISCLAIMER: The use of this standard is governed by the "Texas Engineering Practice Act". No warranty of any kind is made by TxDOT for any purpose whatsoever. TxDOT assumes no responsibility for the conversion of this standard to other formats or for incorrect results or damages resulting from its use.

Washers shall conform to ASTM F436.

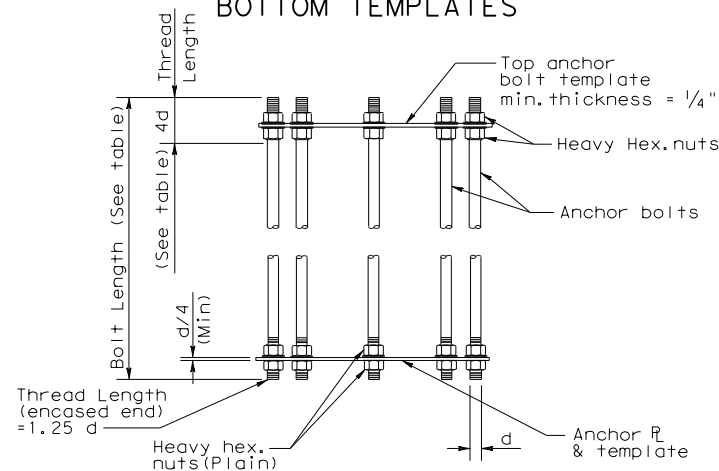
ANCHOR BOLT DIA.	WASHER DIMENSIONS				HOLE IN BASE PLATE
	OUTSIDE DIAMETER	HOLE DIAMETER	THICKNESS		
			MIN.	MAX.	
d	2d	d + 1/8"	0.136"	0.177"	d + 1/4"
1 1/2" or less	2d	d + 1/8"	0.136"	0.177"	d + 1/4"
1 3/4"	2d - 1/8"	d + 1/8"	0.178"	0.280"	d + 5/16"
2"	2d - 1/4"	d + 1/8"	0.178"	0.280"	d + 5/16"
Over 2"	2d - 1/2"	d + 1/8"	0.240"	0.340"	d + 5/16"

ANCHOR BOLT SIZE				
DIA	BOLT LENGTH	THREAD LENGTH	PROJECTION LENGTH	GALVAN. LENGTH
1 1/4"	2'-11"	5"	5 1/4"	11 1/4"
1 3/8"	3'-1"	5 1/2"	5 3/4"	11 3/4"
1 1/2"	3'-4"	6"	6 1/4"	1'-0 1/4"
1 3/4"	3'-10"	7"	7 1/4"	1'-1 1/4"
2"	4'-3"	8"	8 1/4"	1'-2 1/4"
2 1/4"	4'-9"	9"	9 1/4"	1'-3 1/4"
2 1/2"	5'-2"	10"	10 1/4"	1'-4 1/4"
2 3/4"	5'-8"	11"	11 1/4"	1'-5 1/4"
3"	6'-1"	1'-0"	1'-0 1/4"	1'-6 1/4"

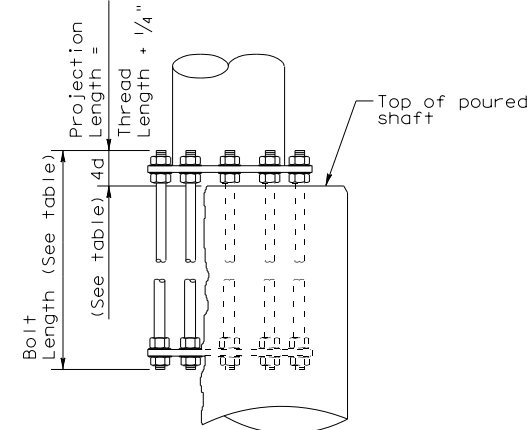
- ① Anchor Bolt Fabrication Tolerances:  
 Bolt Length ~ ±1/2"  
 Thread Length ~ ±1/2"  
 Galvanized Length ~ -1/4"
- ② Thread length applies to upper and lower threads



**TOP VIEW OF TOP & BOTTOM TEMPLATES**

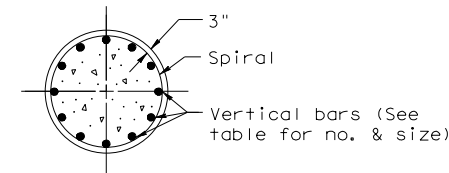


**ANCHOR BOLT ASSEMBLY (PRIOR TO INSTALLATION)**

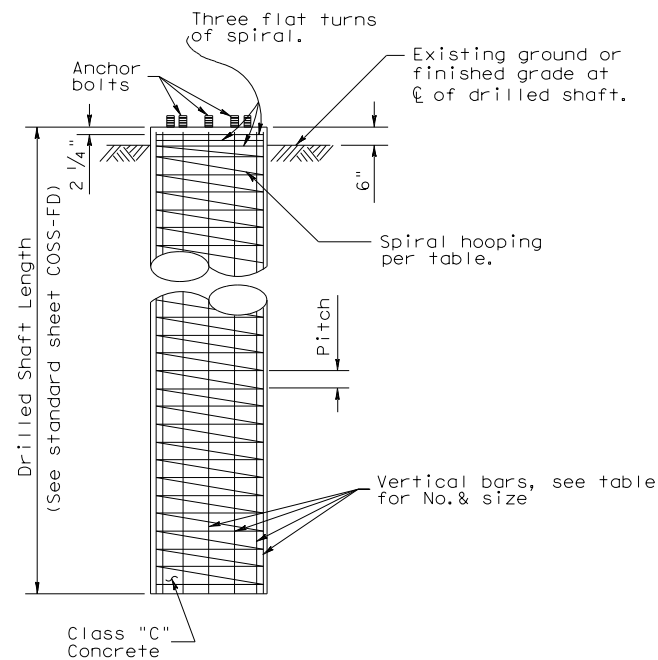


**BEARING SEAT ELEVATION**

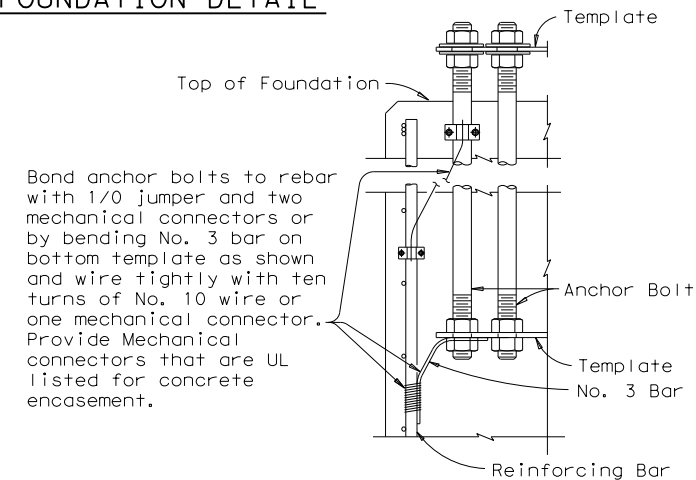
ANCHOR BOLT SIZE	PIPE OUTSIDE DIAMETER											
	16"			20"			24"			30"		
	BOLT CIRCLE DIA	DRILLED SHAFT SIZE	DRILLED SHAFT REINF	BOLT CIRCLE DIA	DRILLED SHAFT SIZE	DRILLED SHAFT REINF	BOLT CIRCLE DIA	DRILLED SHAFT SIZE	DRILLED SHAFT REINF	BOLT CIRCLE DIA	DRILLED SHAFT SIZE	DRILLED SHAFT REINF
1 1/4" Dia x 2'-11"	20 1/2"	36" Dia	14-#8 (A)	24 1/2"	36" Dia	14-#8 (A)						
1 3/8" Dia x 3'-1"	20 3/4"	36" Dia	12-#9 (A)	24 3/4"	42" Dia	14-#9 (A)						
1 1/2" Dia x 3'-4"	21"	36" Dia	12-#9 (A)	25"	42" Dia	14-#9 (A)	29"	42" Dia	14-#9 (C)			
1 3/4" Dia x 3'-10"	21 1/2"	36" Dia	10-#10 (A)	25 3/8"	42" Dia	12-#10 (B)	29 3/8"	48" Dia	16-#10 (C)	35 3/8"	54" Dia	18-#10 (C)
2" Dia x 4'-3"	22"	36" Dia	12-#10 (A)	25 3/4"	42" Dia	12-#10 (B)	29 3/4"	48" Dia	16-#10 (C)	35 3/4"	54" Dia	18-#10 (C)
2 1/4" Dia x 4'-9"	22 1/2"	42" Dia	12-#11 (A)	26"	42" Dia	10-#11 (B)	30"	48" Dia	14-#11 (C)	36"	54" Dia	14-#11 (D)
2 1/2" Dia x 5'-2"				26 1/2"	42" Dia	12-#11 (B)	30 1/2"	48" Dia	16-#11 (C)	36 1/2"	54" Dia	16-#11 (D)
2 3/4" Dia x 5'-8"							31 1/2"	48" Dia	18-#11 (D)	37"	54" Dia	20-#11 (D)
3" Dia x 6'-1"										37 1/2"	54" Dia	24-#11 (D)



**SECTION**



**FOUNDATION DETAIL**



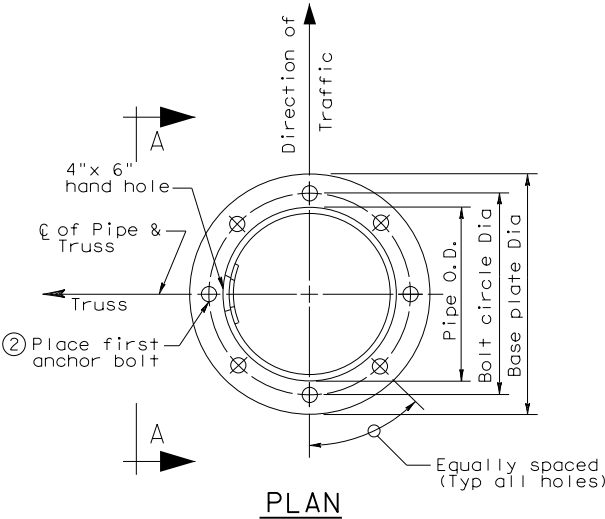
Bond anchor bolts to rebar with 1/0 jumper and two mechanical connectors or by bending No. 3 bar on bottom template as shown and wire tightly with ten turns of No. 10 wire or one mechanical connector. Provide Mechanical connectors that are UL listed for concrete encasement.

**LIGHTNING PROTECTION SYSTEM**

- A = #3 Plain spiral at 6" pitch (Grade 40)
- B = #4 Plain spiral at 6" pitch (Grade 40)
- C = #4 Plain spiral at 6" pitch (Grade 60)
- D = #4 Plain spiral at 3 1/2" pitch (Grade 60)

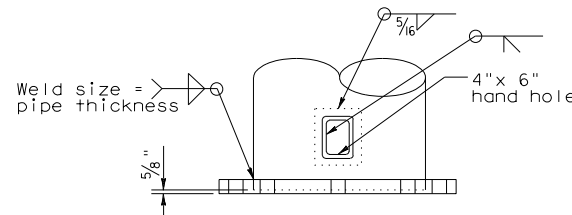
**GENERAL NOTES**

- Concrete shall be Class "C".
- Reinforcing shall conform to Item 440, "Reinforcing Steel".
- Anchor bolts and nuts for anchor bolts shall be "Alloy Steel" per Item 449, "Anchor Bolts".
- Anchor bolts shall be rigidly held in position during concrete placement using steel templates at the top and bottom. The top templates shall be removed after the concrete has set.
- Lubricate and tighten anchor bolts when erecting the structure per Item 449, "Anchor Bolts". After the structure has been aligned in its final position and the anchor bolts have been properly tightened, tack weld anchor bolt nuts to washer, and tack weld washers to base plate. Galvanizing in tack welded areas shall be repaired in accordance with Item 445, "Galvanizing".
- All vertical reinforcing shall be carried to the bottom of the Drilled Shaft.



**PLAN**

- ② See "Cantilever Overhead Sign Support" or "High Lever Cantilever Overhead Sign Support" sheets for number and size.



**VIEW A-A**

**③ BASE PLATE & HANDHOLE DETAILS**

- ③ See "Cantilever Overhead Sign Support" or "High Level Cantilever Overhead Sign Support" sheets for Diameter and thickness of base plate.

				<b>Traffic Safety Division Standard</b>	
<b>CANTILEVER OVERHEAD SIGN SUPPORT FOUNDATION</b>					
<b>COSSF-21</b>					
FILE: cossf-21.dgn	DN:	CK:	DW:	CK:	
© TxDOT November 2007	CONT	SECT	JOB	HIGHWAY	
8-21	REVISIONS				
	DIST	COUNTY	SHEET NO.		