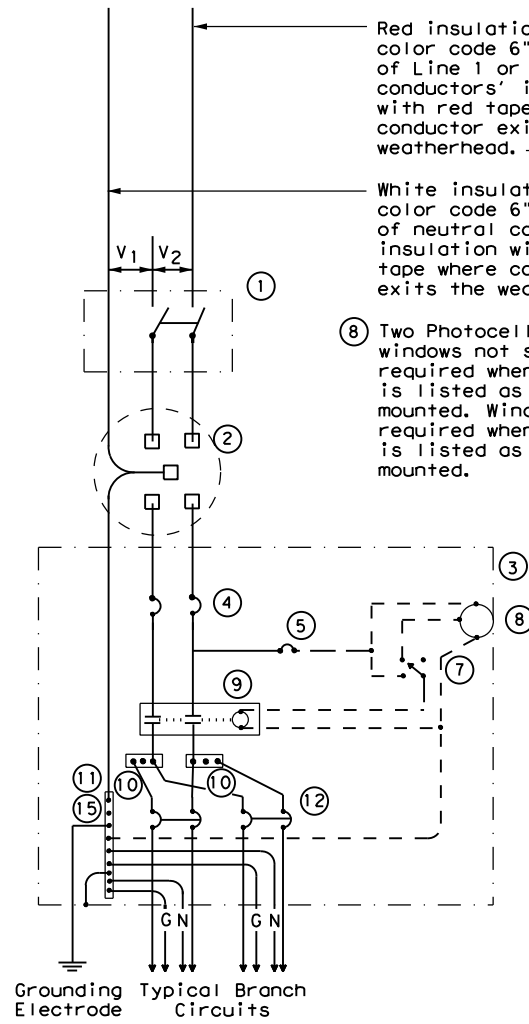


DISCLAIMER: The use of this standard is governed by the "Texas Engineering Practice Act". No warranty of any kind is made by TxDOT for any purpose whatsoever. TxDOT assumes no responsibility for the conversion of this standard to other formats or for incorrect results or damages resulting from its use.



**SCHEMATIC TYPE A
THREE WIRE**

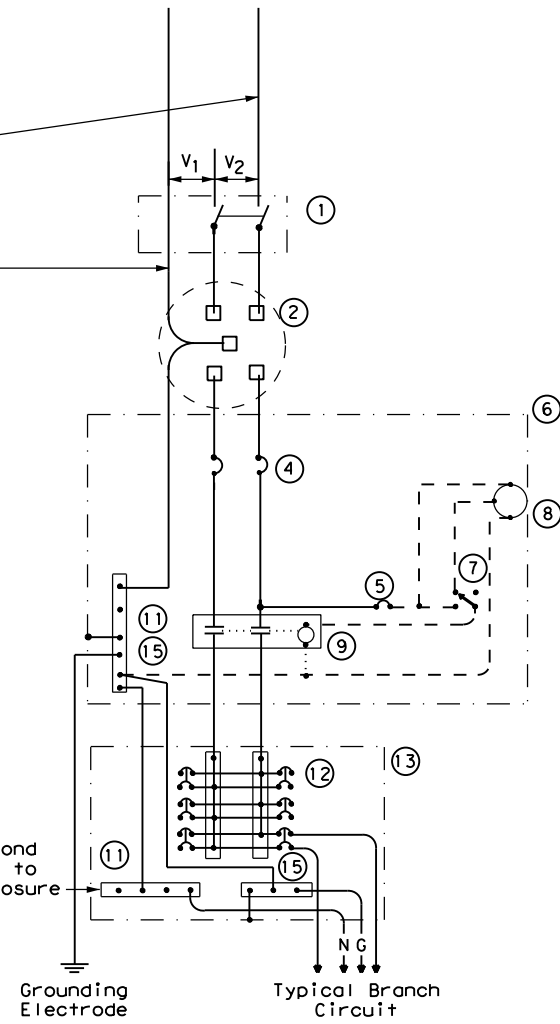
Red insulation or color code 6" length of Line 1 or Line 2 conductors' insulation with red tape where conductor exits the weatherhead.

White insulation or color code 6" length of neutral conductors' insulation with white tape where conductor exits the weatherhead.

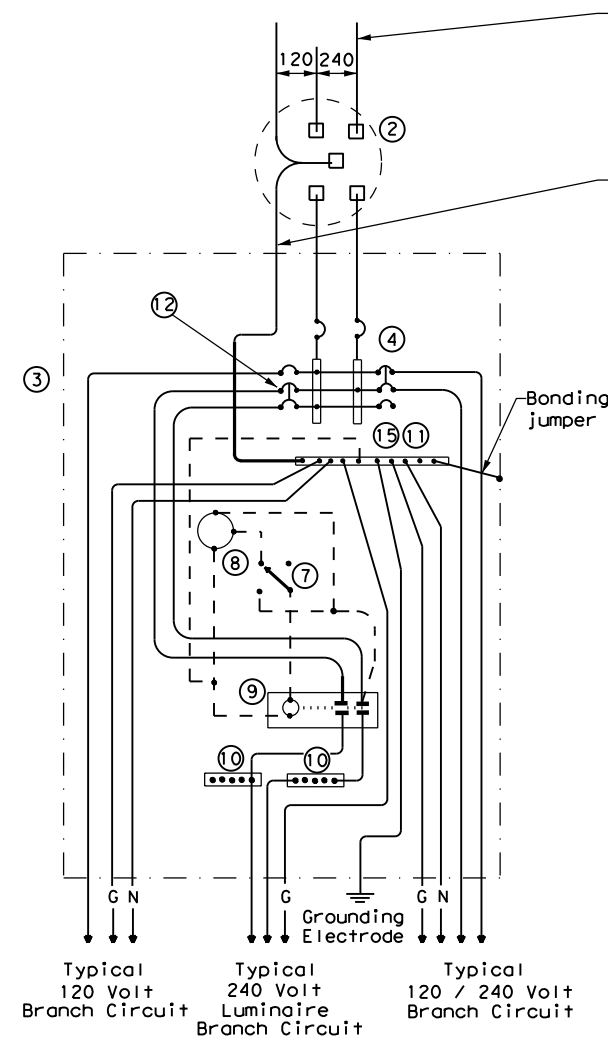
⑧ Two Photocell viewing windows not shown but required when photocell is listed as enclosure mounted. Windows not required when photocell is listed as pole top mounted.

Do not bond this bus to the enclosure

WIRING LEGEND	
————	Power Wiring
- - - -	Control Wiring
—N—	Neutral Conductor
—G—	Equipment grounding conductor-always required



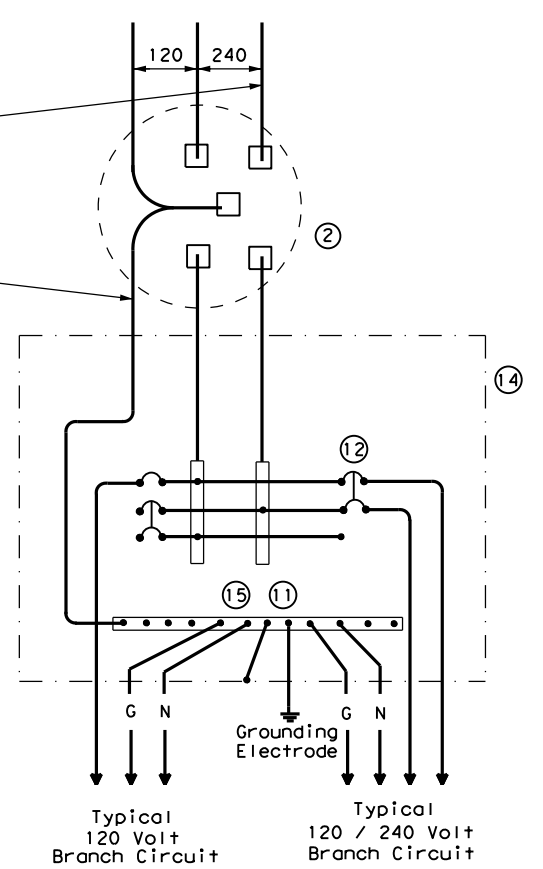
**SCHEMATIC TYPE C
THREE WIRE**



**SCHEMATIC TYPE D - CUSTOM
120/240 VOLTS - THREE WIRE**

Red insulation or color code 6" length of Line 1 or Line 2 conductors' insulation with red tape where conductor exits the weatherhead.

White insulation or color code 6" length of neutral conductors' insulation with white tape where conductor exits the weatherhead.



**SCHEMATIC TYPE T
120/240 VOLTS - THREE WIRE**
Galvanized steel-"Buy Off The Shelf" only. When required install photocell top of the pole or on luminaire only, no lighting contractor will be installed.

SCHEMATIC LEGEND	
1	Safety Switch (when required)
2	Meter (when required-verify with electric utility provider)
3	Service Assembly Enclosure
4	Main Disconnect Breaker (See Electrical Service Data)
5	Circuit Breaker, 15 Amp (Control Circuit)
6	Auxiliary Enclosure
7	Control Station ("H-O-A" Switch)
8	Photo Electric Control (enclosure-mounted shown)
9	Lighting Contactor
10	Power Distribution Terminal Blocks
11	Neutral Bus
12	Branch Circuit Breaker (See Electrical Service Data)
13	Separate Circuit Breaker Panelboard
14	Load Center
15	Ground Bus

		Traffic Operations Division Standard	
ELECTRICAL DETAILS SERVICE ENCLOSURE AND NOTES			
ED(6) - 14			
FILE: ed6-14.dgn	DN: TxDOT	CK: TxDOT	DW: TxDOT
©TxDOT October 2014	CONT	SECT	JOB
REVISIONS			
DIST	COUNTY	SHEET NO.	

DATE:
FILE: